

# Parent Involvement & Community Outreach

Jose Campos, Director



LEARNING WITHOUT LIMITS

# Parents as Leaders (PALs)



LEARNING WITHOUT LIMITS

# Parent Engagement Leadership Initiative (PELI)

- Launched in 2014-2015

## Objectives:

- Organize a goal-linked program of school, family, and community partnerships for successful schools and students using the frame works of “Six Types of Involvement.”
- Develop a researched based partnership program selecting practices that produce positive results for students, forming and Action Team for Partnerships, and solving challenges to involve family and community.
- Complete a draft of a One-Year Action Plan for Partnerships.



Research shows that all families care about their children, want them to succeed, and eager to obtain better information from schools and communities in order to remain good partners in their children's education.



# Family Literacy

- An action plan was developed in 2015 to increase literacy and develop reading routines between parents and their children.
- The first workshop was held at the TSSC in Nov 12, 2015 by parent volunteers.
- Since 2015, PALs have facilitated classes in 15 sites with over 150 parents in attendance.



# jTEP Class

- The first computer class started in 2016-2017 with Superate Triunfa.
- PALs assisted with the development of jTEP by creating a curriculum to support parents with Class Dojo, Parent Connect, resume building, creating a home budget and developing a PowerPoint presentation on universities and more.
- PALs have facilitated classes in 27 sites since 2016 with over 350 participants.



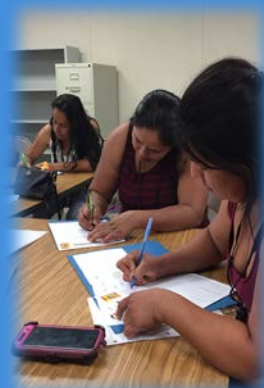
# Abriendo Puertas

- An action plan was developed in 2015 to increase literacy and develop reading routines between parents and their children.
- The first workshop was held at the TSSC in Nov 12, 2015 by parent volunteers.
- Since 2015, PALs have facilitated classes in 15 sites with over 150 parents in attendance.



# Mis Primeras Palabras

- The first computer class started in 2016-2017 with Superate Triunfa.
- PALs assisted with the development of jTEP by creating a curriculum to support parents with Class Dojo, Parent Connect, resume building, creating a home budget and developing a PowerPoint presentation on universities and more.
- PALs have facilitated classes in 27 sites since 2016 with over 350 participants.



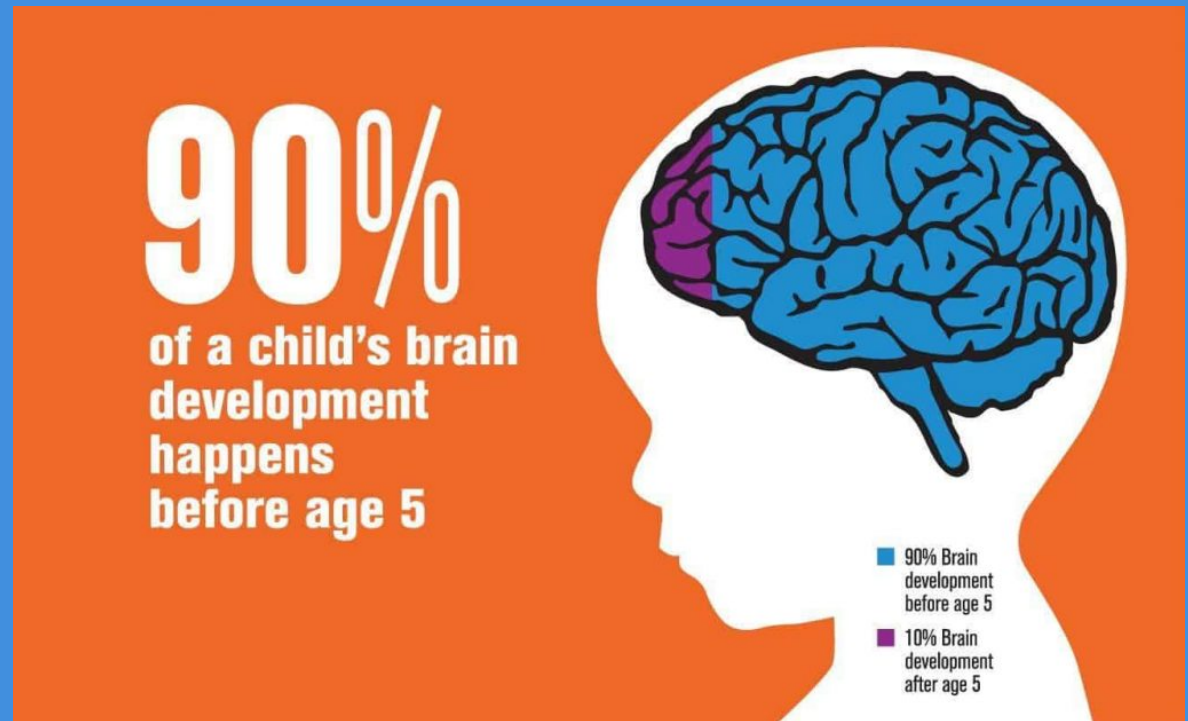
# Parent & Early Child Development Center



# The Importance of 0-5

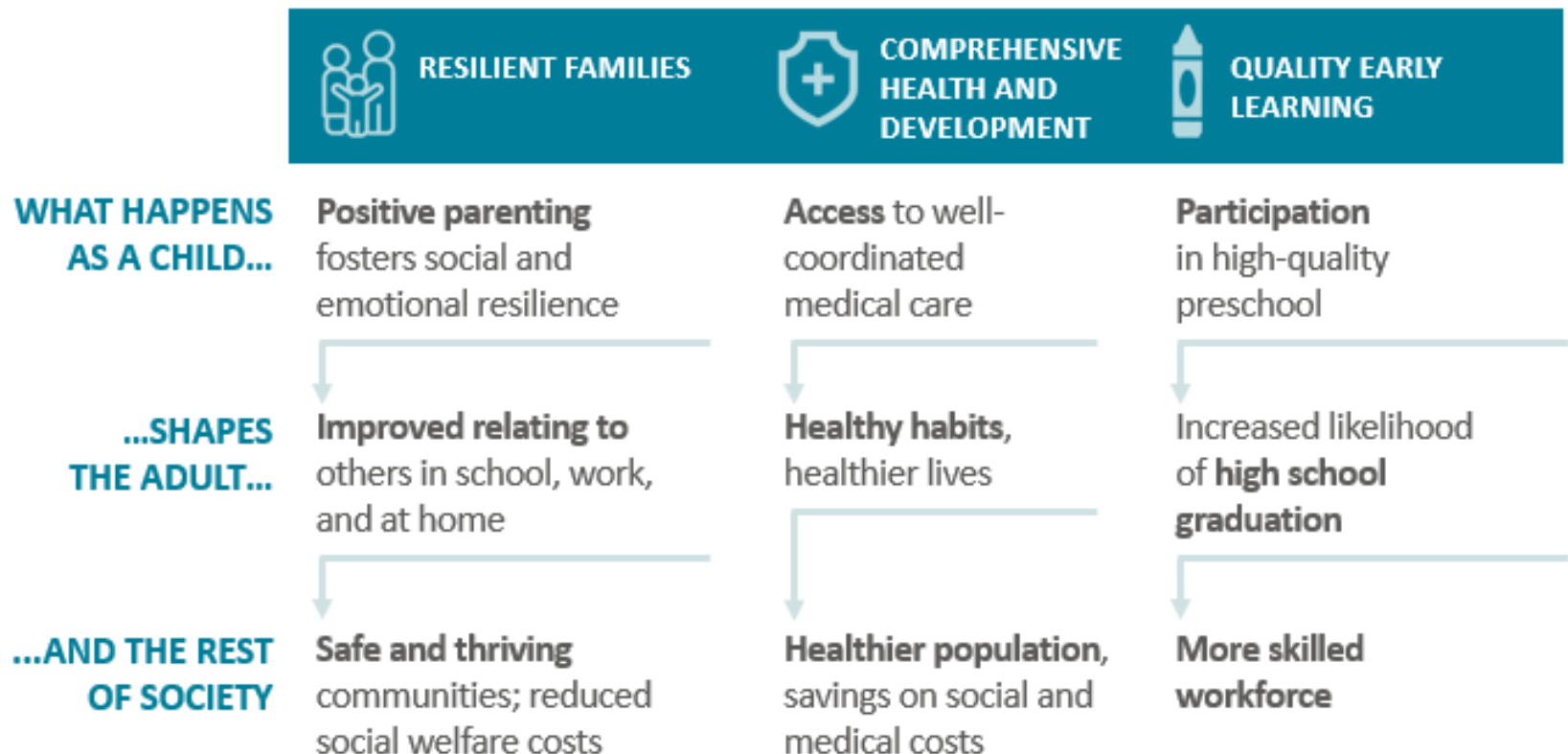
*“Early experiences affect how the brain develops, shaping, how children learn, behave, and grow.”*

- The Center for the Developing Child at Harvard University



# What Happens in the First 5 Years Affect Us All

Attention to supporting the early years can change the trajectory of a whole lifetime



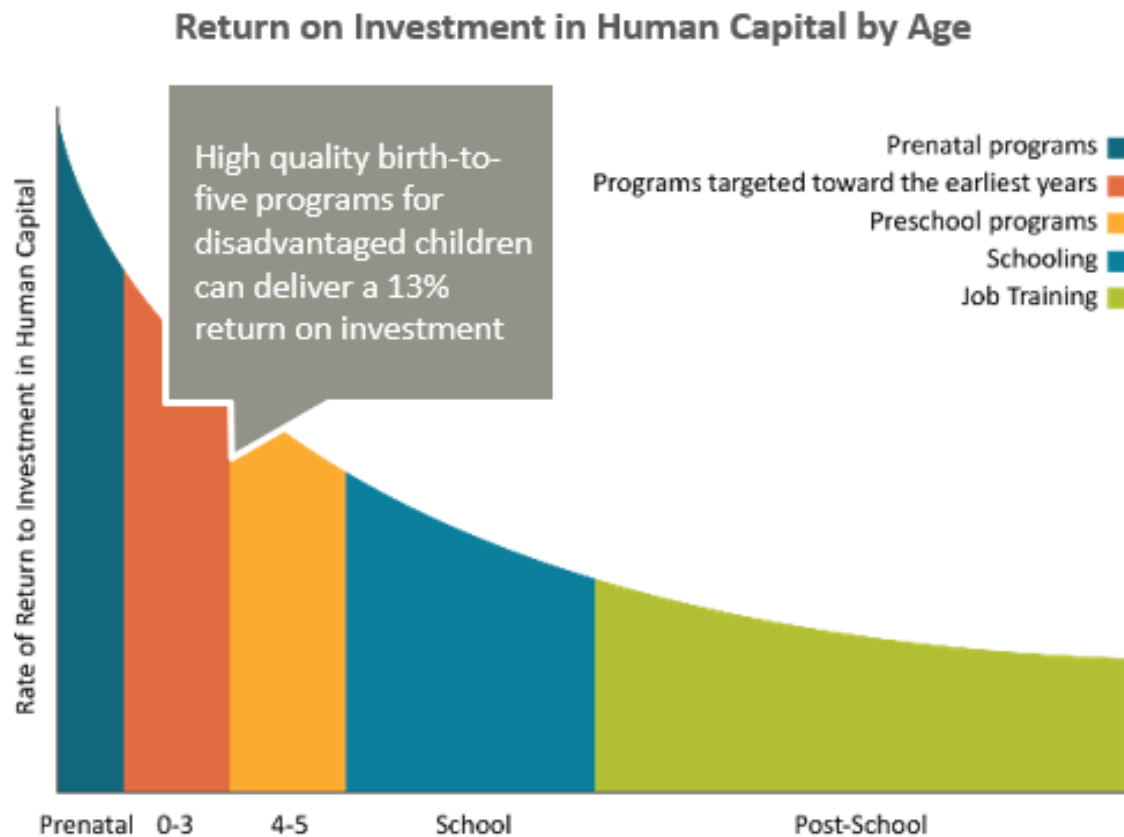
First 5 California





# The Earlier the Investment, the Higher the Return

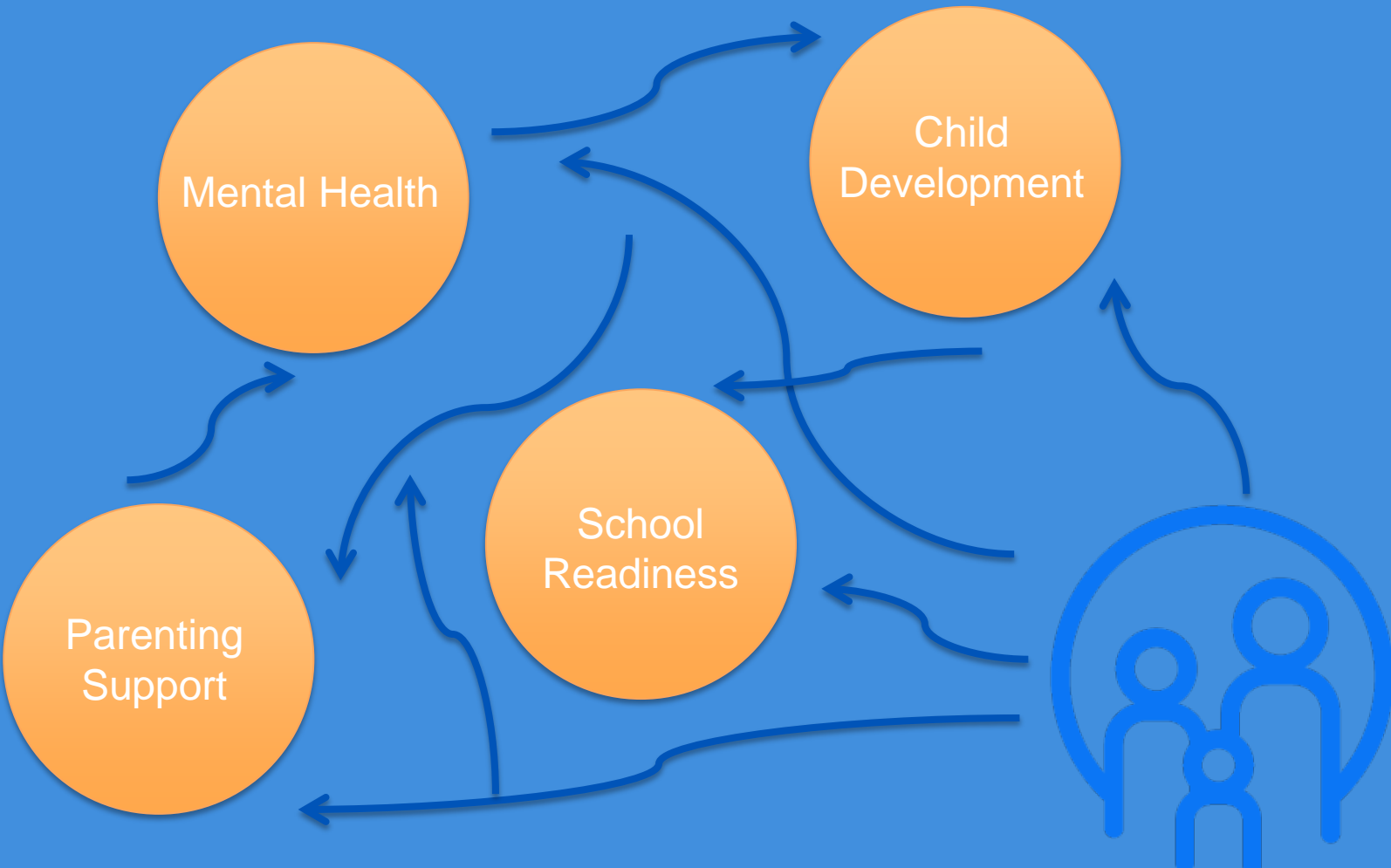
Investments in early childhood are most impactful, relative to those later in life



Source: James Heckman, Nobel Laureate in Economics



# Families Struggle to Navigate Fragmented Systems



Strengthen the individual, family, and community by encouraging parents to become advocates for their child's education, providing resources and services that will foster the growth of a child's development and school readiness, and connecting community organization to collaborate towards building a healthier connected community.

# MISSION

Child Development

Parent Support

Mental Health

School  
Readiness

We are committed to providing families with resources that will build resiliency, support positive parent-child relationships, and promote academic success for students by linking families to services. This is done by building a network of resources and partnerships with local agencies and members within the community.

# VISION



Questions?

Thank you!



LEARNING WITHOUT LIMITS