

MEASURE EE

CITIZENS' OVERSIGHT COMMITTEE PROJECT AND EXPENDITURE UPDATE

March 5, 2019



LEARNING WITHOUT LIMITS

Status Updates on Major Modernization Projects

Project Name	Completed	In Progress	Project Name	Completed	In Progress
Glen Avon ES Modernization		✓	Mission Bell Elementary Library/Media Center		✓
Ina Arbuckle Elementary School Modernization	✓		Mission Bell Elementary Classrooms & Admin Bldg.	✓	
Jurupa Middle School Modernization*			RHS Buildings 100-1100 and Admin Building	✓	
JVHS Innovation Center	✓		Troth Street ES Modernization*		
JVHS Path of Travel Upgrades	✓		Troth Street ES Sewer Alignment		✓
			West Riverside ES Modernization		✓



Completed Projects



Sewer connection at first private easement



Sewer connection across Ridgeview



Ina Arbuckle
Library/Media Center



Ina Arbuckle Library/Media Center



RHS Landscaping



RHS Video Production CTE Lab



JVHS ADA Path of Travel Upgrades



JVHS ADA Path of Travel Upgrades



JURUPA UNIFIED SCHOOL DISTRICT

Ina Arbuckle ES Modernization

About the project:

Utility Infrastructure Upgrade, Fire Alarm Upgrade, Construct New Administration and Kindergarten Building, New Kindergarten Playground, Modernize Permanent Classroom Wings, Renovate Old Office to house Library

Project completion (less hydroseeding of field):
December 2018

Measure EE Contribution:	\$17,500,000.00
Amount Spent:	\$16,399,286.92
% of Measure EE Contribution Spent:	93.37%



JURUPA UNIFIED SCHOOL DISTRICT

Mission Bell ES Modernization

About the project:

New Administration Bldg., New MPR,
Renovate Existing MPR to Library/Media
Center, modernized 11 classrooms.

Construction began:

April 2017

Project Completion:

Everything complete except Library/Media
Center (March 2019)



JURUPA UNIFIED SCHOOL DISTRICT

Jurupa Valley HS Path of Travel Upgrades

About the project:

Replace student and staff walkways from parking lots to campus, new accessible parking stalls new gates with panic hardware

Construction Began:

December 2019, substantially complete

Measure EE Contribution*:	\$296,800.00
Amount Spent*:	\$236,797.00
% of Measure EE Contribution Spent:	79.78%



JURUPA UNIFIED SCHOOL DISTRICT

Rubidoux HS Modernization

About the project:

Modernize 1000 and 1200 Wings, Seismic Upgrades and Exterior Encapsulation of 100-600 & 900 Wings, Improve ADA Access and Enhance Campus Structural Security

Project Completion:

December 2018

Measure EE Contribution:	\$14,600,000.00
Amount Spent:	\$13,270,243.34
% of Measure EE Contribution Spent:	90.89%



JURUPA UNIFIED SCHOOL DISTRICT

West Riverside ES Modernization



About the project:

Demo of old childcare center and IMC building, Utility Infrastructure Upgrade, Construct New Admin Bldg., Library/CR Bldg. and New Kinder Bldg., Fire Alarm Upgrade, Restore 400 Bldg., and Modernize 500 Bldg.

Estimated date of completion:

December 2020

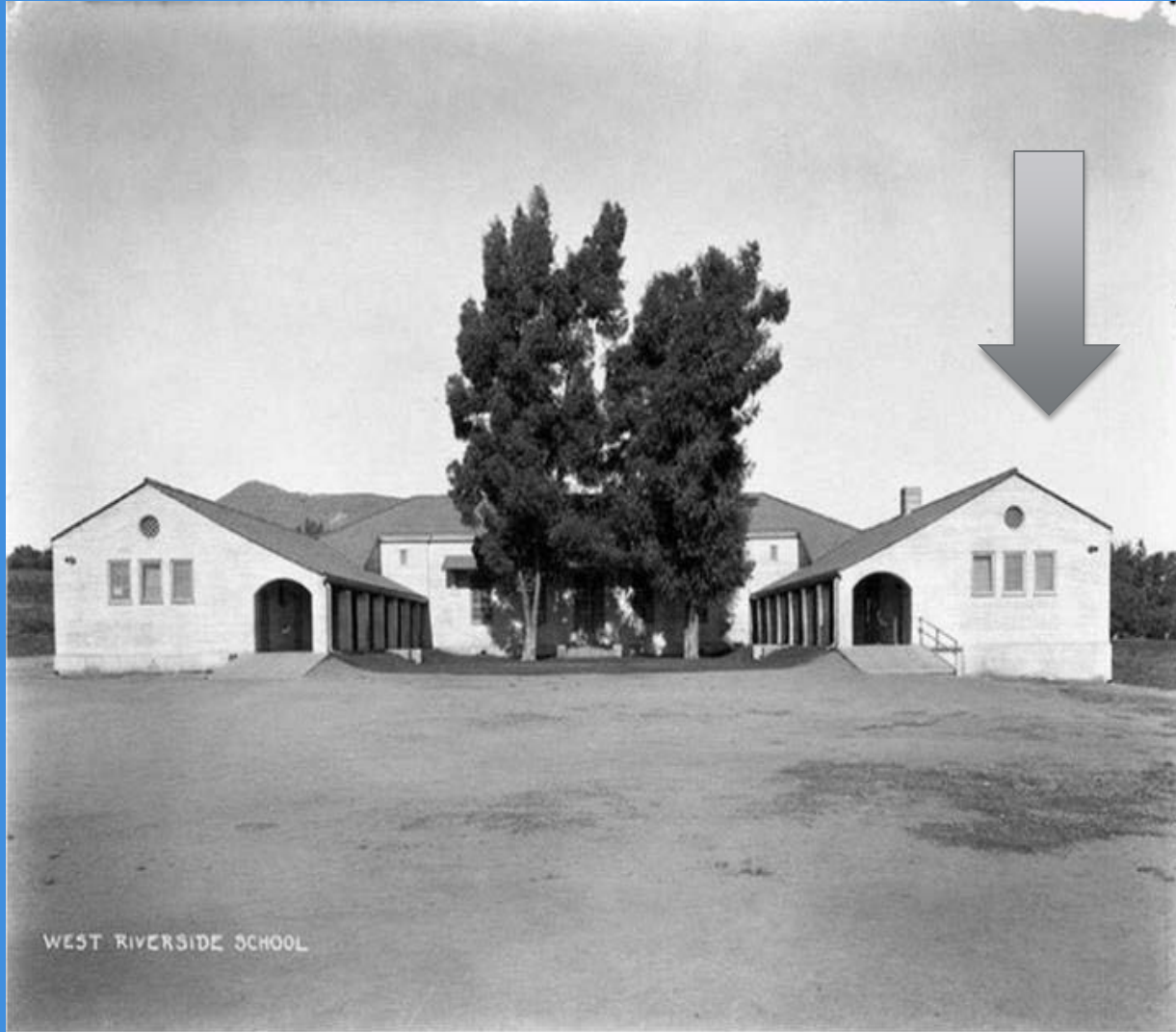
Measure EE Contribution:	\$20,750,000.00
Amount Spent:	\$3,198,795.94
% of Measure EE Contribution Spent:	15.42%



JURUPA UNIFIED SCHOOL DISTRICT

West Riverside ES Update Historic Classroom Building

About the project:
Built in 1923-1924.



JURUPA UNIFIED SCHOOL DISTRICT

West Riverside ES Update Historic Classroom Building

Estimated Completion Date: June 2019
"Rear Admiral Allen E. "Boot" Hill Building



JURUPA UNIFIED SCHOOL DISTRICT

RUHNAU
CLARKE
ARCHITECTS

Troth Street ES Sewer Alignment & Modernization Planning

About the project:

Alignment of off-site sewer to the school site

Estimated date of completion (sewer project):
March 2019

Measure EE Contribution:	\$2,060,000.00
Amount Spent:	\$1,044,267.51
% of Measure EE Contribution Spent:	50.69%



JURUPA UNIFIED SCHOOL DISTRICT

Projects In Schematic Design

(To Be Paid With Remaining EE Funds)



LEARNING WITHOUT LIMITS

Glen Avon ES

Measure EE

Modernization

About the project:

Construct New Administration and Library Building, Relocate Kindergarten Playground, Modernize Classroom Wings, and Upgrade Fire Alarm System

Estimated Project Schedule:

Spring Break 2019 through early 2021

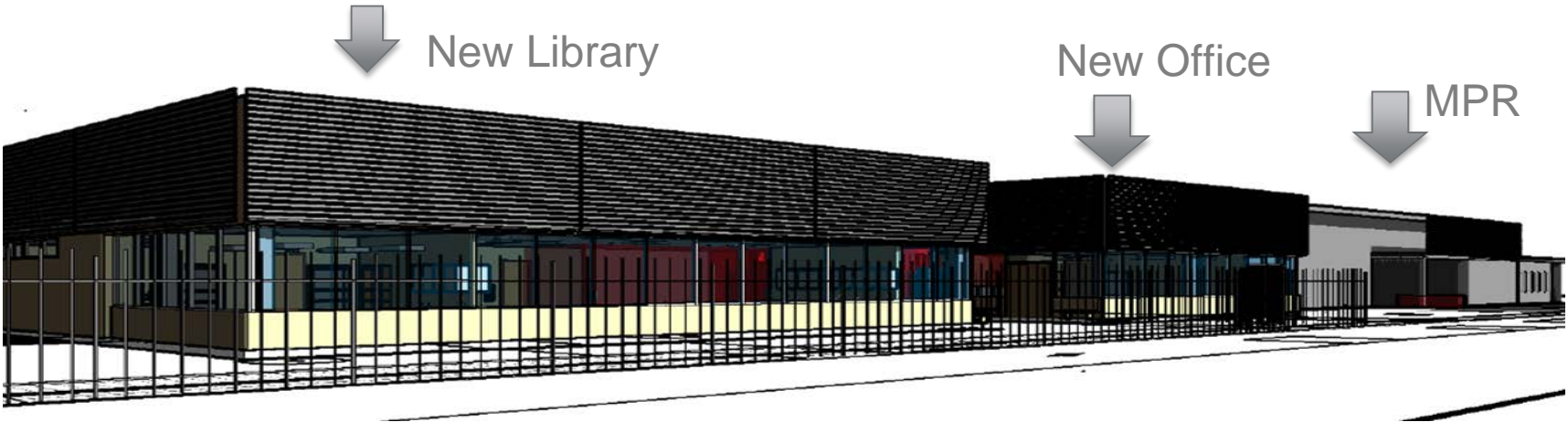
Estimated Project Cost:

\$15.8 million



Measure EE Contribution:	\$14,908,035.13
Amount Spent:	\$57,203.89*
% of Measure EE Contribution Spent:	.38%

*CFD contributions have covered other expenditures to date



Jurupa Middle School Modernization

- Built in 1951, last modernized 1987 – eligible for modernization in 2012
- Aging infrastructure, obsolete point of entry



Measure EE Contribution:	\$21,000,000.00
Amount Spent:	\$709,383.00
% of Measure EE Contribution Spent:	3.38%



Future Projects in Schematic Design (Contingent on State Funding)

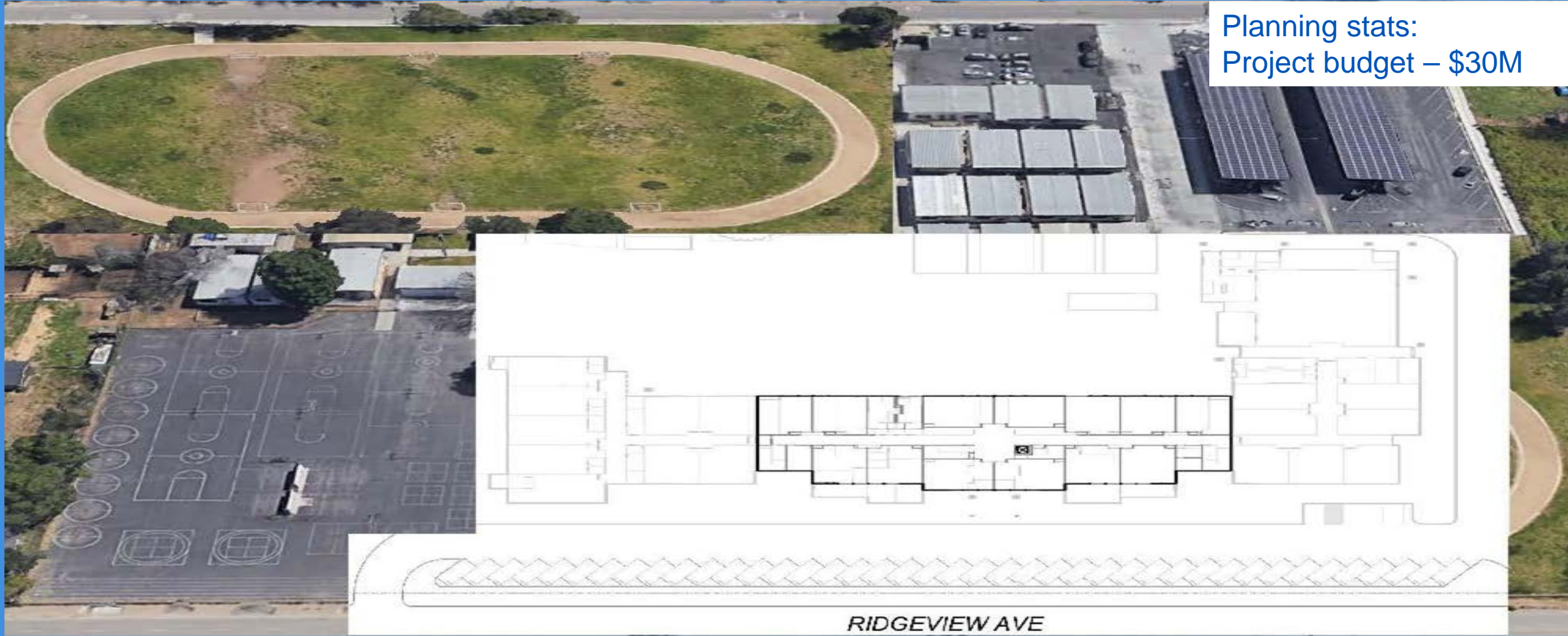


LEARNING WITHOUT LIMITS

Troth Street ES Reconstruction

- Built in 1949, last modernized 2003/2006 – eligible for modernization in 2012
- Aging infrastructure, obsolete point of entry

Planning stats:
Project budget – \$30M



JURUPA UNIFIED SCHOOL DISTRICT

Rubidoux High School Concert Hall

– Culminating Moment for Jurupa USD Stringed Instrument Program



JURUPA UNIFIED SCHOOL DISTRICT

Rubidoux High School Concert Hall



Planning stats: Project
Budget - \$12M



JURUPA UNIFIED SCHOOL DISTRICT

Rubidoux High School Concert Hall



Planning stats: Project
Budget - \$12M



JURUPA UNIFIED SCHOOL DISTRICT

West Riverside ES Classroom Modernization

Built 1949 – partial modernizations 1987&1992 – eligible for modernization in 2012



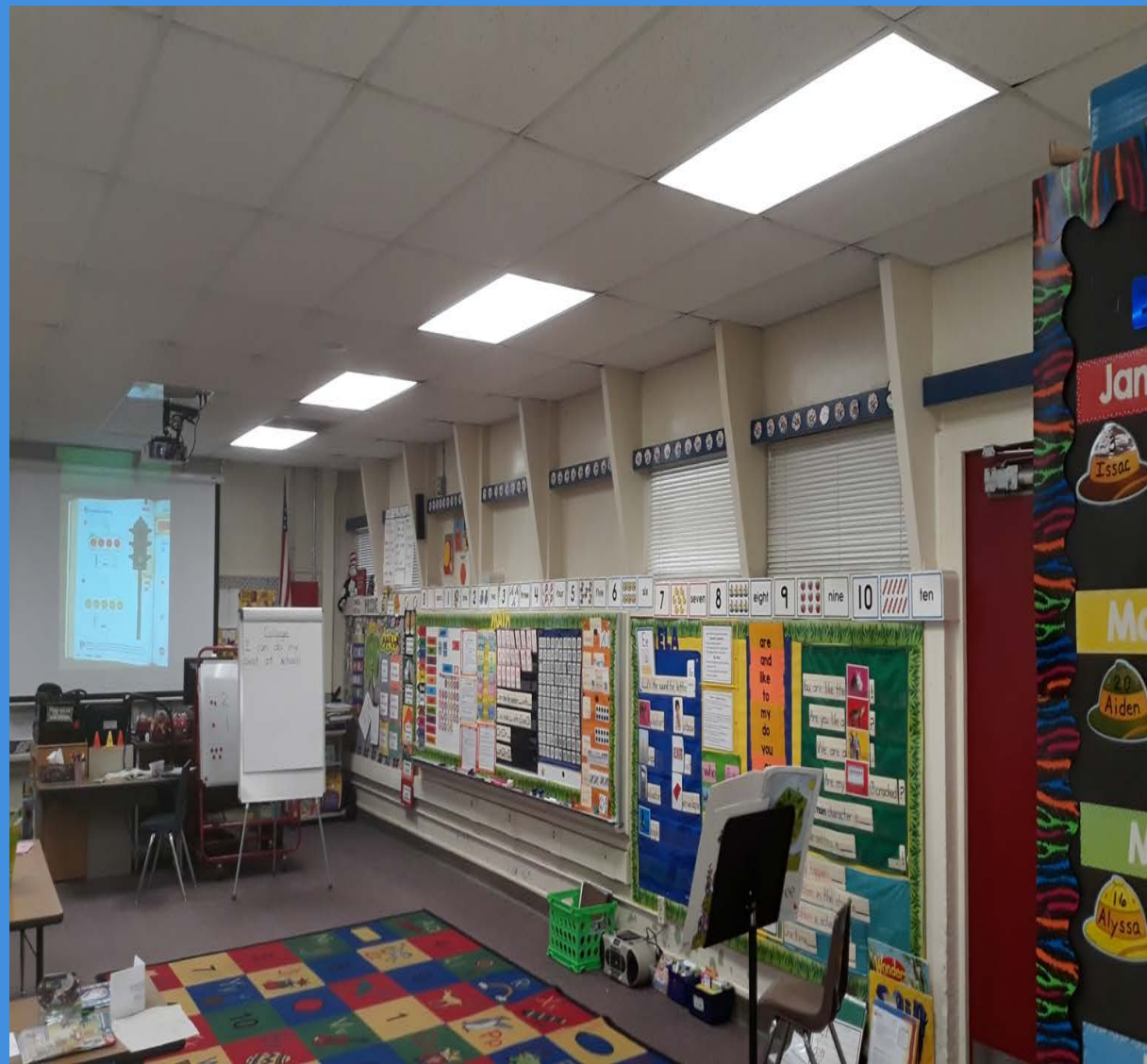
JURUPA UNIFIED SCHOOL DISTRICT

West Riverside ES Classroom Modernization



JURUPA UNIFIED SCHOOL DISTRICT

West Riverside ES Classroom Modernization



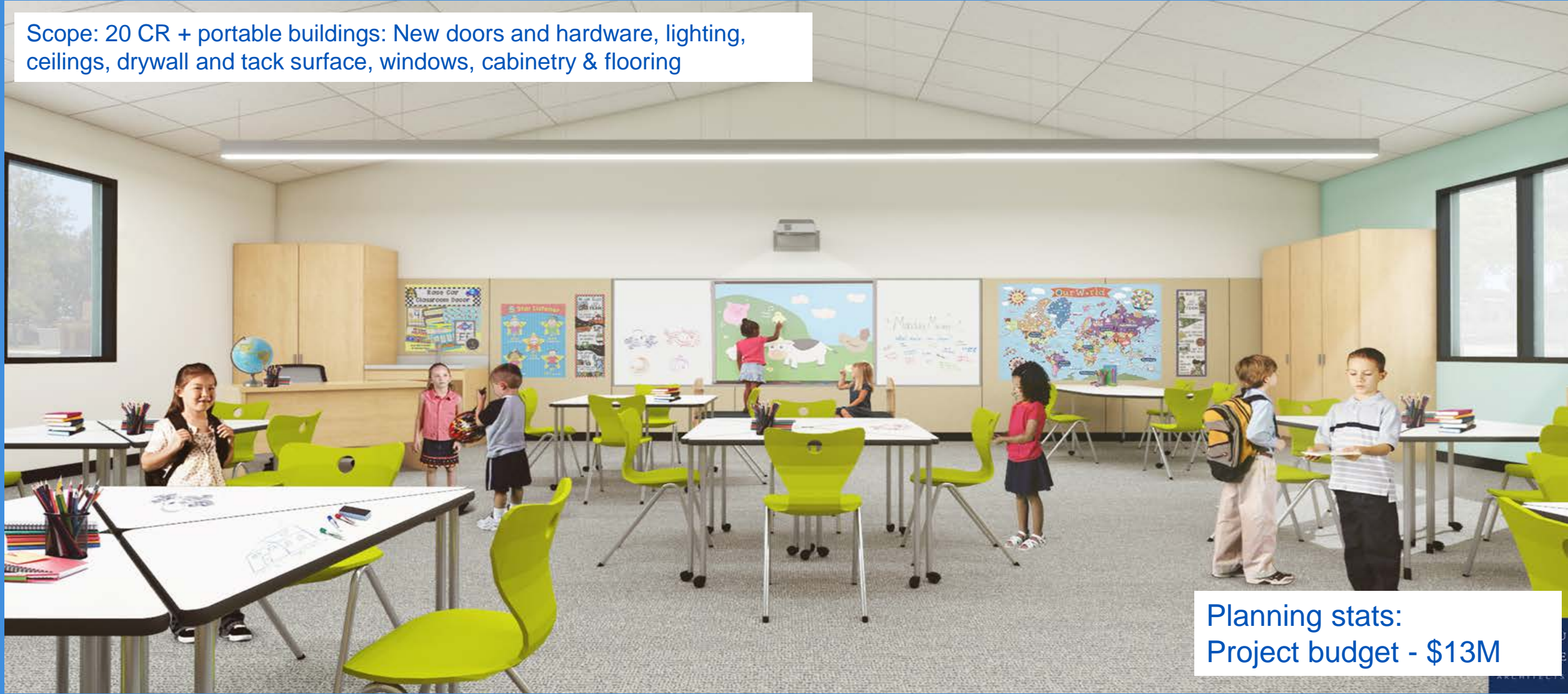
West Riverside ES Classroom Modernization



JURUPA UNIFIED SCHOOL DISTRICT

West Riverside ES Classroom Modernization

Scope: 20 CR + portable buildings: New doors and hardware, lighting, ceilings, drywall and tack surface, windows, cabinetry & flooring



Planning stats:
Project budget - \$13M



JURUPA UNIFIED SCHOOL DISTRICT

Measure EE Budget Report – February 20, 2019

EE Projects	Project Budget	Estimated Measure EE Contribution	Received CFD/Rebates	Measure EE Dollars in Contracts	Measure EE Dollars Spent	Measure EE Contract Balance
Clean Energy and Sustainability						
Prop 39 Districtwide Upgrades	\$7,220,098.00	\$2,375,444.00	\$4,844,654.00	\$2,375,444.00	\$2,375,444.00	\$0.00
Technology						
Student Chromebooks	\$16,199,954.00	\$16,199,954.00	\$0.00	\$4,290,004.15	\$4,199,953.76	\$90,050.39
Districtwide Wireless Network Upgrades	\$8,722,205.21	\$8,541,330.51	\$180,874.70	\$8,541,330.51	\$8,541,330.51	\$0.00
School Modernization						
Glen Avon Elementary	\$16,200,000.00	\$14,908,035.13	\$1,291,964.87	\$14,165,480.89	\$57,203.89	\$14,108,277.00
Ina Arbuckle Elementary	\$17,500,000.00	\$17,500,000.00	\$0.00	\$17,062,680.91	\$16,339,286.92	\$723,393.99
Mission Bell Elementary	\$15,400,000.00	\$15,400,000.00	\$0.00	\$15,357,651.74	\$13,315,655.60	\$2,041,996.14
Troth Street SWR & Mod Planning	\$2,060,000.00	\$2,060,000.00	\$0.00	\$1,782,696.92	\$1,044,267.51	\$738,429.41
West Riverside Elementary	\$20,750,000.00	\$20,750,000.00	\$0.00	\$20,662,144.77	\$3,198,795.94	\$17,463,348.83
Jurupa Middle School	\$21,000,000.00	\$21,000,000.00	\$0.00	\$3,960,535.31	\$709,383.00	\$3,251,152.31
RHS Retrofitting	\$14,600,000.00	\$14,600,000.00	\$0.00	\$14,589,967.26	\$13,270,243.34	\$1,319,723.92
Other Miscellaneous Projects						
New Construction						
Stone Avenue 2-Story Bldg	\$2,506,871.26	\$0.00	\$2,506,871.26	\$0.00	\$0.00	\$0.00
Stone Avenue Bus Loop	\$58,898.00	\$58,898.00	\$0.00	\$58,898.00	\$58,898.00	\$0.00
Sunnyslope 2-Story Bldg	\$3,747,049.91	\$2,345,743.18	\$1,401,306.73	\$2,345,743.18	\$2,345,743.18	\$0.00
CTE Education						
JVHS Innovation Center	\$8,034,000.00	\$3,396,250.81	\$4,637,749.19	\$3,324,554.84	\$2,952,427.88	\$372,126.96
NVHS Welding Lab	\$242,357.70	\$242,357.70	\$0.00	\$242,357.70	\$242,357.70	\$0.00
Playground Equipment						
JVHS Stadium	\$3,681,115.20	\$239,698.88	\$3,441,416.32	\$239,698.88	\$239,698.88	\$0.00
Elementary Tracks & Playgrounds	\$929,688.36	\$805,953.66	\$123,734.70	\$676,641.97	\$676,641.97	\$0.00
Safety & Security						
Security Gates	\$120,886.04	\$120,886.04	\$0.00	\$120,886.04	\$120,886.04	\$0.00
Other Costs						
Admin, Legal & Consultants	\$1,000,000.00	\$1,000,000.00	\$0.00	\$614,231.44	\$482,953.83	\$131,277.61
Issuance fees & other expenses	\$2,400,000.00	\$2,400,000.00	\$0.00	\$2,400,000.00		\$2,400,000.00
Total	\$162,373,123.68	\$143,944,551.91	\$18,428,571.77	\$112,810,948.51	\$70,171,171.95	\$42,639,776.56



Measure EE Financials

Measure EE Dollars Spent	\$70,171,171.95
Series A-C Issuance Fees	\$2,400,000.00
Amount Encumbered	\$40,239,776.56
Series C Balance	\$31,189,051.49

*02/20/2019

