



Trenton Hansen, Ph.D.
Superintendent

4850 Pedley Road, Jurupa Valley, CA 92509 T (951) 360-4100

Date: March 26, 2026

Re: 25-26-15MOIB - P&D Portable - HVAC and Low Voltage – Addendum #1

TO ALL BIDDERS:

The following changes, omissions, and/or additions to the Bid Documents and/or Project Manual and/or Drawings shall apply to proposals made for and to the execution of the various parts of the work affected thereby, and all other conditions shall remain the same. All parties of interest shall take careful note of the addendum so that the proper allowances may be made in strict accordance with the Addendum.

Bidder shall acknowledge receipt of this addendum in the space provided on the Bid Form. Failure to do so may subject Bidder disqualification.

In case of conflict between Drawings, bid documents and this addendum, this addendum shall govern.

ITEM #1 **Question: When is the project expected to start?**

Answer: We are anticipating the NTP to be issued in mid-April.

ITEM #2 **Question: What is the budget allocated for this project?**

Answer: The engineer's estimate is:
CAT 02 - HVAC - \$45,000
CAT 03 - Low Voltage - \$8,000

ITEM #3 **Question: We would like to request that a "B" licensed contractor be allowed to bid on the category 02- HVAC and/or category 03- low voltage projects/scopes, if listing a subcontractor with the related C-20 or C-7 license.**

Answer: A "B" licensed contractor will not be allowed to bid with subcontractor holding the C-20 or C-7 license.

LEARNING WITHOUT LIMITS

Board of Trustees

Melissa Ragole, *President*, Pamela Blynn, *Clerk*, Francisco Cueto, Jenny Felix, Raquel Ortiz Cornejo

ITEM #4

Question: We would like to propose utilizing a 3-ton Mitsubishi Multi head ductless split system for the portable restroom area in lieu of a 4-ton system. Each head unit (4 total) has a 9,000 BTU output. This approach is more cost effective, eliminates the need for a branch box, resulting in a more streamlined installation while still providing sufficient capacity to adequately cool the space. Please see attached submittal sheets for the 3-ton equipment.

Answer: Yes, a 3-ton ductless split system is acceptable for this location. Please see the attached specification sheets.

ITEM #5

Question: If the total bid amount for Category 03 – Low Voltage does not exceed \$25,000, will the 10% Bid Bond, Performance Bond, and Payment Bond still be required as stated in Instructions to Bidders Section 2 and Section 8? Or does the District acknowledge that bonds may not apply below the \$25,000 threshold per Public Contract Code §22030?

Answer: The Bid Bond (or alternative bidder's security) is a required form. Failure to provide a bid security will deem the bid non-responsive. The awarded contractors will be required to provide payment and performance bonds for their contract price.

LEARNING WITHOUT LIMITS

Board of Trustees

Melissa Ragole, *President*, Pamela Blynn, *Clerk*, Francisco Cueto, Jenny Felix, Raquel Ortiz Cornejo



Fast Tech Heating & Cooling Inc.

16155 Amalfi Drive, Perris 92570

License # 1066989

office@fasttechair.com (951) 830-7756

SUBSTITUTION REQUEST

Project: 25-26-15MOIB – P&D Portable-HVAC and Low Voltage

Project Address: 4740 Pedley Road, Jurupa Valley, CA 92509

Item 3 on HVAC Bid documents:

3. HVAC For Portable Restrooms

1. Provide and install new Mitsubishi 4-ton multi head ductless split system with one head per area, 4 total head units, for modular building portable restrooms.

2. Price should include removal and disposal of old equipment, equipment rental and all other parts required to complete full installation including start up and prevailing wage labor. Condensate lines and pump, and unit roof curb adapter. Electrical, disconnect, low voltage, integration to Pelican Thermostat with a TC4 including gateway and repeaters as needed to establish communication to all areas of this project. 3. New disconnect and electrical from disconnect to the unit.

We would like to propose utilizing a 3-ton Mitsubishi Multi head ductless split system for the portable restroom area in lieu of a 4-ton system. Each head unit (4 total) has a 9,000 BTU output. This approach is more cost effective, eliminates the need for a branch box, resulting in a more streamlined installation while still providing sufficient capacity to adequately cool the space. Please see attached submittal sheets for the 3-ton equipment.

We appreciate your time and consideration of the substitution request and look forward to your response.

Sean Cornelis

Sean Cornelis

President

Fast Tech Heating & Cooling Inc.

MXZ-5D36NL

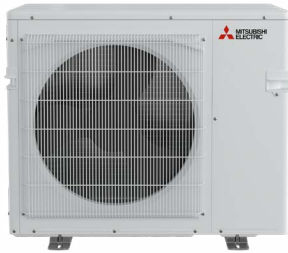
35,400 BTU/H HEAT PUMP OUTDOOR UNIT



Job Name:

System Reference:

Date:



GENERAL FEATURES

- Compact, small chassis
- Compressor overcurrent detection
- Compressor thermal protection
- Fan motor overheating/voltage protection
- Freeze-prevention base pan heater equipped as standard
- High-pressure protection
- Prolonged heating over an extended duration
- Quiet outdoor unit operation as low as 52 dB(A)
- Rated for 2,000 hours spraying time per ASTM B117 Standard
- Variable speed INVERTER-driven compressor
- Blue Fin anti-corrosion treatment applied to the outdoor unit heat exchanger for increased coil protection and longer life

Specifications		System	
Unit Type		MXZ-5D36NL	
Cooling at 95F ¹ (Non-Ducted // Mixed // Ducted)	Maximum Capacity	Btu/h	36,400 // 34,900 // 33,400
	Rated Capacity	Btu/h	35,400 // 33,400 // 31,400
	Minimum Capacity	Btu/h	12,600 // 12,600 // 12,600
	Maximum Power Input	W	4,100 // 4,200 // 4,300
	Rated Power Input	W	2,950 // 3,260 // 3,569
	Power Factor (208V)	%	0.99 // 0.99 // 0.99
	Power Factor (230V)	%	0.99 // 0.99 // 0.99
Heating at 47F ² (Non-Ducted // Mixed // Ducted)	Maximum Capacity	Btu/h	43,000 // 39,000 // 35,000
	Rated Capacity	Btu/h	36,000 // 35,200 // 34,400
	Minimum Capacity	Btu/h	12,800 // 12,800 // 12,800
	Maximum Power Input	W	4,100 // 4,320 // 4,540
	Rated Power Input	W	3,015 // 3,134 // 3,253
	Power Factor (208V)	%	0.99 // 0.99 // 0.99
	Power Factor (230V)	%	0.99 // 0.99 // 0.99
Heating at 17F ³ (Non-Ducted // Mixed // Ducted)	Maximum Capacity	Btu/h	26,600 // 26,600 // 26,600
	Rated Capacity	Btu/h	23,000 // 22,400 // 22,000
	Maximum Power Input	W	3,440 // 3,720 // 4,000
	Rated Power Input	W	2,407 // 2,605 // 2,854
Heating at 5F ⁴ (Non-Ducted // Mixed // Ducted)	Maximum Capacity	Btu/h	24,000 // 21,200 // 18,400
	Maximum Power Input	W	3,350 // 3,612 // 4,024
Efficiency (Non-Ducted // Mixed // Ducted)	SEER ² ¹		19.20 // 17.70 // 16.20
	EER ² ¹		12 // 10.40 // 8.80
	HSPF ² (IV) ²		9.30 // 8.80 // 8.30
	COP at 47°F ²		3.5 // 3.3 // 3.1
	COP at 17°F at Maximum Capacity ³		2.26 // 2.08 // 1.94
	COP at 5°F at Maximum Capacity ⁴		2.10 // 1.72 // 1.34
	ENERGY STAR® Certified		Yes // No // No
Electrical	Electrical Power Requirements	V AC / V AC, ø, Hz	208 / 230, 1, 60
	Guaranteed Voltage Range	V AC	198 - 253
	Voltage: Indoor - Outdoor, S1-S2	V AC	208/230
	Voltage: Indoor - Outdoor, S2-S3	V DC	24
	Recommended Wire Size (Indoor - Outdoor)	AWG	14
	Short-circuit Current Rating (SCCR)	kA	5
	MCA	A	29
	MOCP	A	49

NOTES

¹Cooling at 95°F (Indoor: 80°F DB, 67°F WB // Outdoor: 95°F DB, 75°F WB)

²Heating at 47°F (Indoor: 70°F DB, 60°F WB // Outdoor: 47°F DB, 43°F WB)

³Heating at 17°F (Indoor: 70°F DB, 60°F WB // Outdoor: 17°F DB, 15°F WB)

⁴Heating at 5°F (Indoor: 70°F DB, 60°F WB // Outdoor: 5°F DB, 4°F WB)

Capacity varies based on the number of indoor units operating and the model of the Multi-zone Outdoor Unit. For reference to connected capacity charts, please refer to Multi-zone Outdoor Unit Operational Performance.

For actual capacity performance based on indoor unit type and number of indoor units connected, please refer to MXZ Operational Performance.

Although the maximum connectable capacity is 130%, the outdoor unit cannot provide more than 100% of the rated capacity.

Please utilize this over capacity capability for load shedding or applications where it is known that all connected units will NOT be operating at the same time.

¹ Indoor/Outdoor Unit Operating Temperature Range (Cooling Air Temp [Maximum / Minimum]):

• Applications should be restricted to comfort cooling only; equipment cooling applications are not recommended for low ambient temperature conditions.

** Outdoor Unit Operating Temperature Range (Cooling Thermal Lock-out / Re-start Temperatures; Heating Thermal Lock-out / Re-start Temperatures):

• System cuts out in heating mode and automatically restarts at these temperatures.

SPECIFICATIONS: MXZ-5D36NL

Specifications			System
Unit Type			MXZ-5D36NL
Outdoor Unit	Fan Motor Full Load Amperage	A	1.74
	Fan Motor Output	W	88
	Defrost Method		Reverse Cycle
	Blue Fin Heat Exchanger Coating		Yes
	Airflow Rate Cooling/Heating	CFM	2,306 / 2,306
	Sound Pressure Level, Cooling ¹	dB (A)	58
	Sound Pressure Level, Heating ²	dB (A)	58
	Compressor Type		Twin Rotary
	Compressor Model		SRB280FDRMC
	Compressor Oil Type // Charge	Type // oz	RM68EH // 23.7
	External Finish Color		Munsell 3.0Y 7.8/1.1
	Base Pan Heater		Optional
	Unit Dimensions (W x D x H)	inch x inch x inch [mm x mm x mm]	37-13/32 x 13 x 31-11/32 [950 x 330 x 796]
	Package Dimensions (W x D x H)	inch x inch x inch [mm x mm x mm]	41-11/32 x 17-5/16 x 38-31/32 [1,050 x 440 x 990]
Unit Weight	lbs [kg]	152 [69]	
Package Weight	lbs [kg]	178 [81]	
ODU Operating Temp. Range	Cooling Intake Air Temp (Maximum / Minimum)	°FDB	115 / 14
	Cooling Thermal Lock-out / Re-start Temperatures	°FDB	10 / 14
	Heating Intake Air Temp [Maximum / Minimum]	°FDB, °FWB / °FDB, °FWB	75, 65 / 6, 5
	Heating Thermal Lock-out / Re-start Temperatures**	°FDB	-4 / 5
Refrigerant	Type		R454B
	Pre-Charged Refrigerant Amount	lbs, oz	6, 3
	Maximum Pre-Charged Piping Length	ft	230
IDU Connection	Minimum Number of Connected IDU		2
	Maximum Number of Connected IDU		5
	Minimum Connected Capacity	Btu/h	12,000
	Maximum connected capacity	Btu/h	51,000
Piping	Liquid Pipe Size O.D. (Flared)	inch	A: 1/4 B: 1/4 C: 1/4 D: 1/4 E: 1/4
	Gas Pipe Size O.D. (Flared)	inch	A: 1/2 B: 3/8 C: 3/8 D: 3/8 E: 3/8
	Total Piping Length	ft [m]	230 [70]
	Farthest Piping Length	ft [m]	82 [25]
	Maximum Height Difference, ODU above IDU	ft [m]	49 [15]
	Maximum Height Difference, ODU below IDU	ft [m]	49 [15]
	Maximum Number of Bends for IDU		70

NOTES

¹Cooling at 95°F (Indoor: 80°F DB, 67°F WB // Outdoor: 95°F DB, 75°F WB)

²Heating at 47°F (Indoor: 70°F DB, 60°F WB // Outdoor: 47°F DB, 43°F WB)

³Heating at 17°F (Indoor: 70°F DB, 60°F WB // Outdoor: 17°F DB, 15°F WB)

⁴Heating at 5°F (Indoor: 70°F DB, 60°F WB // Outdoor: 5°F DB, 4°F WB)

Capacity varies based on the number of indoor units operating and the model of the Multi-zone Outdoor Unit. For reference to connected capacity charts, please refer to Multi-zone Outdoor Unit Operational Performance.

For actual capacity performance based on indoor unit type and number of indoor units connected, please refer to MXZ Operational Performance.

Although the maximum connectable capacity is 130%, the outdoor unit cannot provide more than 100% of the rated capacity.

Please utilize this over capacity capability for load shedding or applications where it is known that all connected units will NOT be operating at the same time.

[†] Indoor/Outdoor Unit Operating Temperature Range (Cooling Air Temp [Maximum / Minimum]):

• Applications should be restricted to comfort cooling only; equipment cooling applications are not recommended for low ambient temperature conditions.

** Outdoor Unit Operating Temperature Range (Cooling Thermal Lock-out / Re-start Temperatures; Heating Thermal Lock-out / Re-start Temperatures):

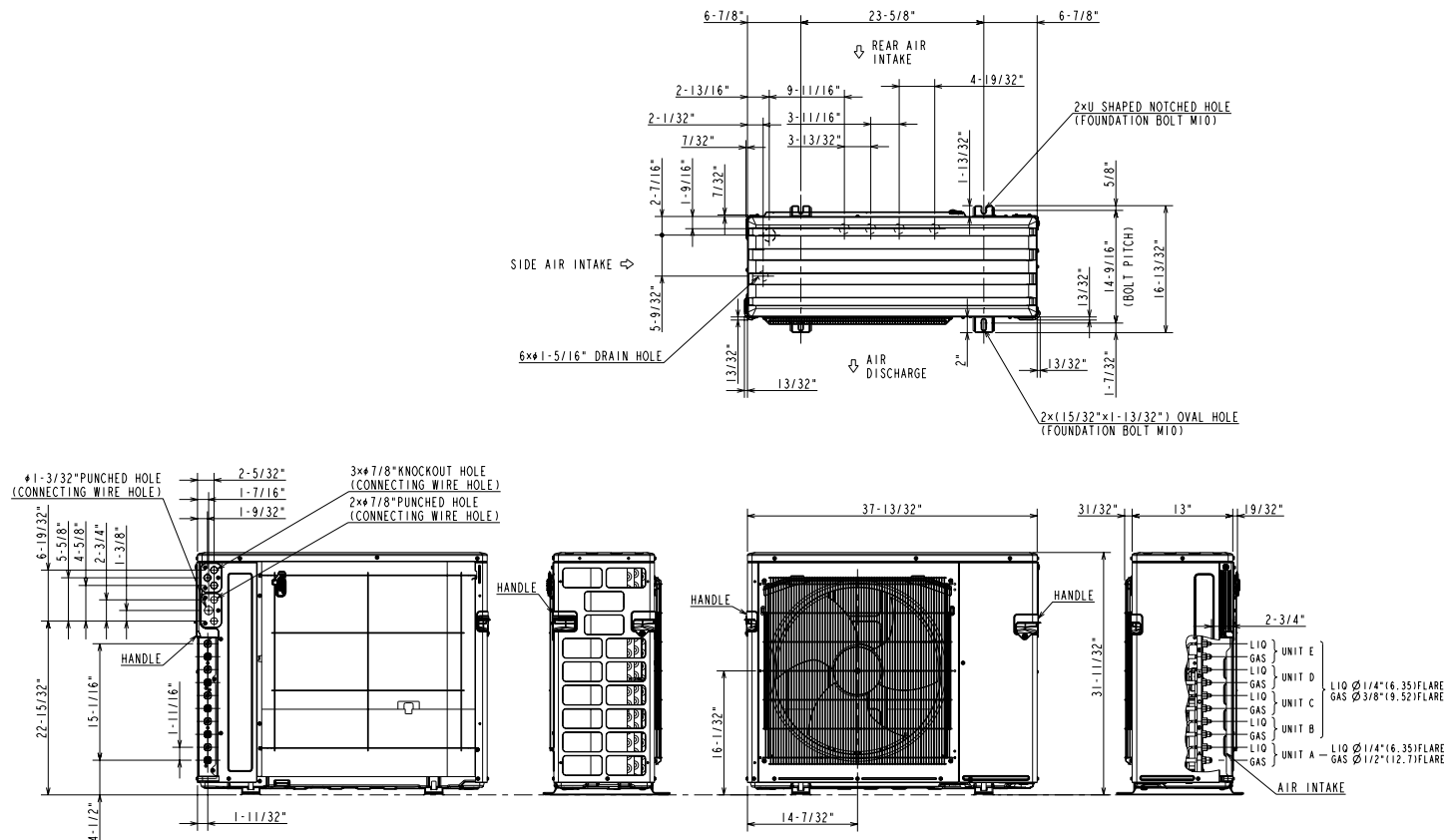
• System cuts out in heating mode and automatically restarts at these temperatures.

OUTDOOR UNIT ACCESSORIES: MXZ-5D36NL

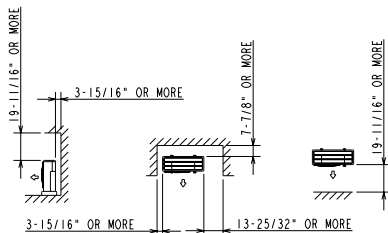
Air Outlet Guide	Air Outlet Guide 1 Piece	PAC-SH96SG-E
Control Interface	M-NET Interface for MXZ	PAC-IF01MNT-E
Mini-Split Wire	14 Gauge 4 wire Armored MiniSplit Cable250 ft roll	SW144-250
	14 Gauge 4 wire Armored MiniSplit Cable50 ft roll	SW144-50
	14 Gauge 4 wire MiniSplit Cable250 ft roll	S144-250
	14 Gauge 4 wire MiniSplit Cable50 ft roll	S144-50
	16 Gauge 4 wire Armored MiniSplit Cable250 ft roll	SW164-250
	16 Gauge 4 wire Armored MiniSplit Cable50 ft roll	SW164-50
	16 Gauge 4 wire MiniSplit Cable250 ft roll	S164-250
	16 Gauge 4 wire MiniSplit Cable50 ft roll	S164-50
Ball Valve	Refrigeration Ball Valve - 1/2	BV12FFSI2
	Refrigeration Ball Valve - 1/4	BV14FFSI2
	Refrigeration Ball Valve - 3/8	BV38FFSI2
	Refrigeration Ball Valve - 5/8	BV58FFSI2
Drain Socket	Drain Socket	PAC-SG60DS-E
Stand	18 Single Fan Stand	QSMS1801M
	24 Single Fan Stand	QSMS2401M
	Condenser Wall Bracket	QSWB2000M-1
	Condenser Wall Bracket - Stainless Steel Finish	QSWBSS
	Outdoor Unit 3-14 inch Mounting Base Pair - Plastic	DSD-400P
	Outdoor Unit Stand 12 High	QSMS1201M
Snow/Rain Diverter	SnowRain Diverter	SRD-4
Hail Guards	Hail Guard	HG-A9
Port Adaptor	Adaptor 1/2 x 3/8	PAC-SK88RJ-E
	Adaptor 1/2 x 5/8	PAC-SK89RJ-E
	Adaptor 1/4 x 3/8	PAC-493PI
	Adaptor 3/8 x 1/2	ADP3812
	Adaptor 3/8 x 5/8	PAC-SK90RJ-E
Mounting Pad	Condensing Unit Mounting Pad 16 x 36 x 3	ULTRILITE1
Optional Defrost Heater	Optional Defrost Heater	PAC-645BH-E
Control/Service Tool	Maintenance Tool Interface	PAC-USCMS-MN-1
NOTES		

OUTDOOR UNIT DIMENSIONS: MXZ-5D36NL

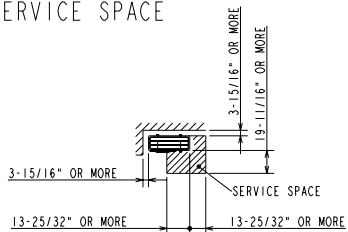
MXZ-5D36NL-U1
MXZ-5D42NL-U1



1. FREE SPACE



2. SERVICE SPACE



1340 Satellite Boulevard Suwanee, GA 30024
 Toll Free: 800-433-4822 <https://mitsubishicomfort.com>



MSZ-GX09NL

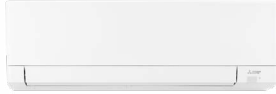
9,000 BTU/H WALL-MOUNTED INDOOR UNIT



Job Name:

System Reference:

Date:



GENERAL FEATURES

- **Dual Barrier Coating:** The patented Dual Barrier Coating reduces the collection of contaminants like dust, fibers, smoke, and oil on the inner surface of the heat pump, resulting in optimal airflow and easier maintenance.
- **Econo Cool:** Econo Cool temporarily and automatically adjusts the airflow based on heat exchanger temperature. The set temperature is increased slightly, which saves energy, while maintaining comfort.
- **Filter:** Electrostatic Enzyme filter (built-in) that is charged with static electricity and designed to attract and filter charged particles which can include airborne non-living particulates. and Microparticle filter (optional) that removes non-living particulate matter, which can include dust and smoke.
- **Multiple control options including:** Back-lit screen hand-held Remote Controller (provided with unit), comfort app, third-party interfaces and both wired and wireless controllers
- **Multiple fan speed options:** Low, Medium, High, Powerful, Auto
- **Powerful Mode:** Temporarily drops or raises the set point and fan speed in order to quickly bring the room to the desired temperature.
- **Quiet operation:** Outdoor units are as quiet as a typical conversation, and most indoor units are whisper quiet.
- **Slim wall-mounted indoor units** provide zone comfort control
- **Smart Dry Mode:** Improves humidity control with minimal over-cooling of the space
- **Smart Set:** recalls a preferred preset temperature setting at the touch of a button
- **Wi-Fi enabled units** pair with the Comfort app for complete control over temperature, fan speeds, modes, schedules, and more.

Specifications			System
Unit Type			MSZ-GX09NL
Cooling Capacity (Nominal) ^{1,3}	Cooling Capacity (Nominal)	Btu/h	9,000
Heating Capacity (Nominal) ^{2,3}	Heating Capacity (Nominal)	Btu/h	10,900
Electrical	Voltage, Phase, Frequency	V AC / V AC, ø, Hz	208 / 230, 1, 60
	Voltage: Indoor - Outdoor, S1-S2	V AC	208/230
	MCA	A	1
Indoor Unit	Fan Motor Type		DC Motor
	Fan Motor Output	W	30
	Airflow Rate at Cooling, Dry	CFM	151, 172, 256, 353, 448
	Airflow Rate at Cooling, Wet	CFM	136, 154, 230, 318, 403
	Airflow Rate at Heating, Dry	CFM	151, 172, 256, 353, 448
	Sound Pressure Level [Cooling]	dB (A)	19, 22, 30, 37, 43
	Sound Pressure Level [Heating]	dB (A)	19, 22, 30, 37, 43
	DBC on HEX (Yes or No)		Yes
	External Finish Color		Munsell 0.7PB 9.2/0.4
	Unit Dimensions (W x D x H)	inch x inch x inch [mm x mm x mm]	31-13/32 x 9-21/32 x 11-25/32 [798 x 245 x 299]
	Package Dimensions (W x D x H)	inch x inch x inch [mm x mm x mm]	34-1/4 x 14-1/4 x 12-3/4 [870 x 360 x 320]
Unit Weight	lbs [kg]	23 [10.40]	
Package Weight	lbs [kg]	27 [12]	
Refrigerant	Type		R454B
Piping	Liquid Pipe Size O.D.	inch [mm]	1/4 [6.35]
	Gas Pipe Size O.D.	inch [mm]	3/8 [9.52]
Drain Pipe	Drain Pipe Size O.D.	inch [mm]	5/8 [16]

NOTES

¹Cooling at 95°F (Indoor: 80°F DB, 67°F WB // Outdoor: 95°F DB, 75°F WB)

²Heating at 47°F (Indoor: 70°F DB, 60°F WB // Outdoor: 47°F DB, 43°F WB)

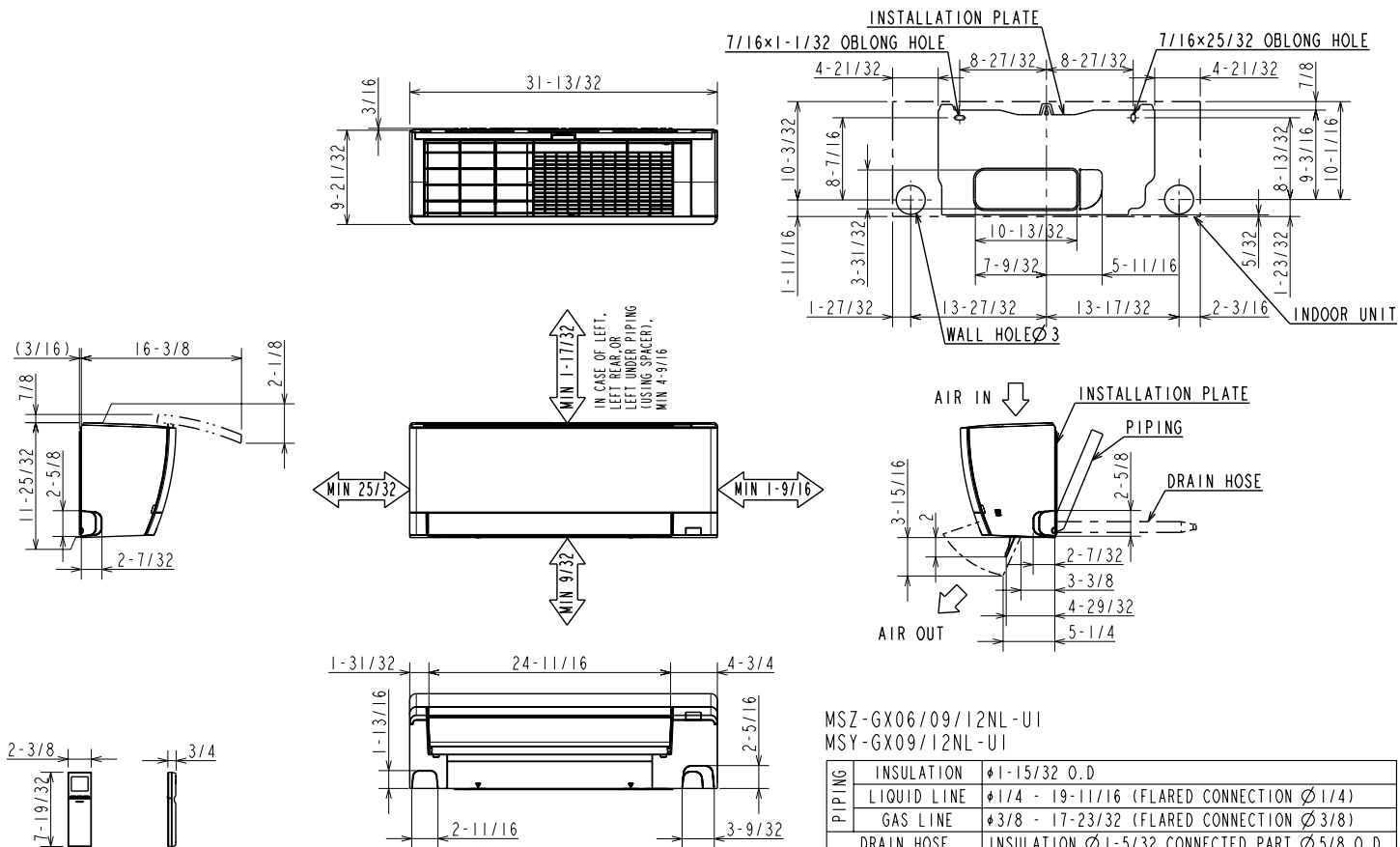
³Nominal capacity only. Actual capacity output varies based on the system-specific configuration.

INDOOR UNIT ACCESSORIES: MSZ-GX09NL

Wireless Remote Controller	Lockdown Bracket for Wireless Handheld Remote Controllers	RCMKP1CB
	RedLINK Wireless Remote Controller	MHK2
Remote Sensor	Remote Temperature Sensor for MFZ MLZ and MSZ models	M21EAA307
	Wireless temperature and humidity sensor for the Comfort app	PAC-USWHS003-TH-1
Lineset	15 x 1/4 x 15 3/8 Lineset Twin-Tube Insulation	MLS143812T-15
	30 x 1/4 x 30 3/8 Lineset Twin-Tube Insulation	MLS143812T-30
	50 x 1/4 x 50 3/8 Lineset Twin-Tube Insulation	MLS143812T-50
	65 x 1/4 x 65 3/8 Lineset Twin-Tube Insulation	MLS143812T-65
Control Interface	Airzone Wired Blueface Controller Black	AZZBSBLUEZEROCN
	Airzone Wired Blueface Controller White	AZZBSBLUEZEROCB
	Airzone Wireless Lite Controller Black	AZZBSLITERN
	Airzone Wireless Lite Controller White	AZZBSLITERB
	Airzone Wireless Think Controller Black	AZZBSTHINKRN
	Airzone Wireless Think Controller White	AZZBSTHINKRB
	IT Extender for kumo station	PAC-WHS01IE-E
	kumo station for the Comfort app	PAC-WHS01HC-E
	M-Net I/O Control Interface for M-Series ²	MAC-334IF-E
	Procon BACnet and Modbus Interface	PAC-UKPRC001-CN-1
	Thermostat Interface for 3rd Party Thermostats	PAC-US445CN-1
Condensate	Wireless Interface Adapter for the Comfort app	PAC-USWHS002-WF-2
	Blue Diamond Advanced Mini Condensate Pump w Reservoir Sensor 208230V recommended	X87-721
	Blue Diamond MaxiBlue Advanced Mini Condensate Pump w Reservoir Sensor 110V up to 48000 BTUH recommended	X87-711
	Blue Diamond MegaBlue Advanced Condensate Pump w Reservoir Sensor	X87-835
	Blue Diamond MicroBlue Mini Condensate Pump 110208230V up to 18000 BTUH	X86-003
	Blue Diamond Sensor Extension Cable 15 Ft	C13-103
	Drain Pan Level SensorControl	SS610E
	Refco Condensate Pump 100-240 VAC up to 120000 BTUH	COMBI
	Refco Condensate Pump 100-240 VAC	GOBI-II
	REFCO PUMP 100-240 VAC 506O HZ	X86-011
Sauermann Condensate Pump	SI30-230	
Filter	Electro Static Anti-allergy Enzyme Filter	MAC-2320FT-E
	Microparticle Filter	MAC-EMF515FT-E
Disconnect Switch	30A600VUL fits 2 X 4 utility box - Black	TAZ-MS303
	30A600VUL fits 2 X 4 utility box - White	TAZ-MS303W
Wired Remote Controller	Deluxe Wired MA Remote Controller	PAR-42MAAUB
	Simple Direct Wired Remote Controller	PAC-SDW01RC-1
	Simple MA Remote Controller ¹	PAC-YT53CRAU-J
	Touch MA Wired Remote Controller ¹	PAR-CT01MAU-SB
Drain Hose	Flexible Mini-Split Drain Hose	DRX-16
Power Supplies and Auxiliary Components	Backup Heat Relay Kit Adapter for CN24 or CN152 Connector	CN24RELAY-KIT-CM3
NOTES		

INDOOR UNIT DIMENSIONS: MSZ-GX09NL

MSZ-GX06NL MSZ-GX09NL MSZ-GX12NL MSZ-GX15NL
MSY-GX09NL MSY-GX12NL MSY-GX15NL



MSZ-GX06/09/12NL-U1
 MSY-GX09/12NL-U1

PIPING	INSULATION	φ1-15/32 O.D
	LIQUID LINE	φ1/4 - 19-11/16 (FLARED CONNECTION φ1/4)
	GAS LINE	φ3/8 - 17-23/32 (FLARED CONNECTION φ3/8)
DRAIN HOSE		INSULATION φ1-5/32 CONNECTED PART φ5/8 O.D

MSZ-GX15NL-U1
 MSY-GX15NL-U1

PIPING	INSULATION	φ1-15/32 O.D
	LIQUID LINE	φ1/4 - 19-11/16 (FLARED CONNECTION φ1/4)
	GAS LINE	φ3/8 - 17-23/32 (FLARED CONNECTION φ1/2)
DRAIN HOSE		INSULATION φ1-5/32 CONNECTED PART φ5/8 O.D

1340 Satellite Boulevard Suwanee, GA 30024
 Toll Free: 800-433-4822 <https://mitsubishicomfort.com>

