



September 9, 2022

ADDENDUM NO. 2 TO THE CONTRACT DOCUMENTS

FOR

Jurupa Valley Unified School District

FOR THE

SAN BERNARDINO CITY UNIFIED SCHOOL DISTRICT
2299 PACIFIC STREET
SAN BERNARDINO, CA 92404

DSA #04-120920 FILE #33-H14 RCA Job No. 1-41-51

NOTICE TO BIDDERS

This Addendum forms a part of the Contract and modifies the original Bidding documents issued September 1, 2022. It is intended that all work affected by the following modifications shall conform with related provisions and general conditions of the contract of the original drawings and specifications. Modify the following items wherever appearing in any drawing or sections of the specifications. Acknowledge receipt of Addendum '2' in the space provided on the Bid Form. Failure to do so may subject bidder to disqualification.

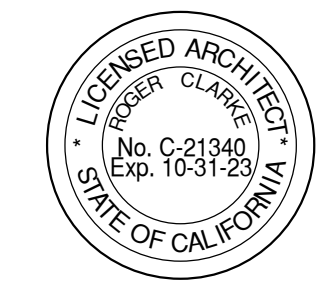
CHANGES TO THE DRAWINGS

Architectural

- Sheet AS-3.1:
 - a. Windows type tag had been added.
- Sheet A1-5.1:
 - a. Interior finishes to the exterior walls had been added.
- Sheet A1-7.1:
 - a. Plywood and Gypsum board interior finishes reference added.
- Sheet A1-7.2:
 - a. Plywood and Gypsum board interior finishes reference added.
- Sheet A1-7.3:
 - a. Plywood and Gypsum board interior finishes reference added.
- Sheet A1-8.1:
 - a. Window type W1 detail, added detail 1
 - b. New Details 14, 15, 16,17, 18 and19, added

END OF ADDENDUM '2'

Roger Clarke, Principal
#C-21340



AGENCY APPROVAL
DATE: 10/24/2024 10:24:12 AM

**RUHNA
CLARKE
ARCHITECTS**

STAMPS

CONSULTANT BRANDING

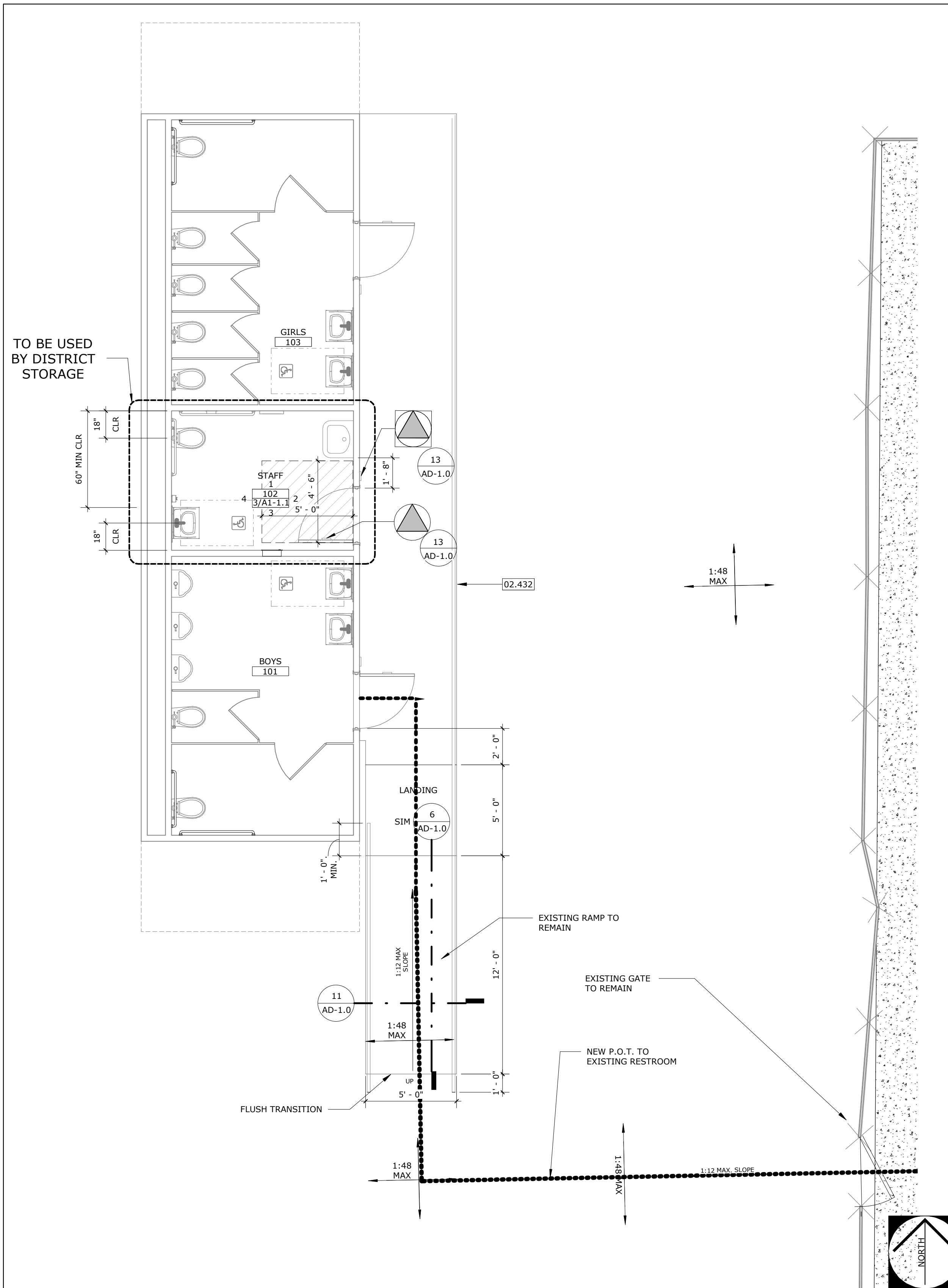
KEYNOTE

- 02.203 (E) SANITARY HARNON DISPOSAL TO REMAIN
- 02.204 (E) TOILET SEAT COVER DISPENSER TO REMAIN
- 02.205 (E) WATERCLOSET TO REMAIN
- 02.207 (E) MIRROR TO REMAIN
- 02.208 (E) SOAP DISPENSER TO REMAIN
- 02.209 (E) LAVATORY TO REMAIN
- 02.210 (E) SERVICE SINK TO REMAIN
- 02.432 (E) CHAIN LINK FENCE TO REMAIN
- 03.304 CONCRETE CONSTRUCTION JOINT
- 03.306 CONCRETE EXPANSION JOINT
- 10.289 (N) RECESSED PAPER TOWEL DISPENSER/WASTE RECEPTACLE, MODEL NO BOBRICK B-369

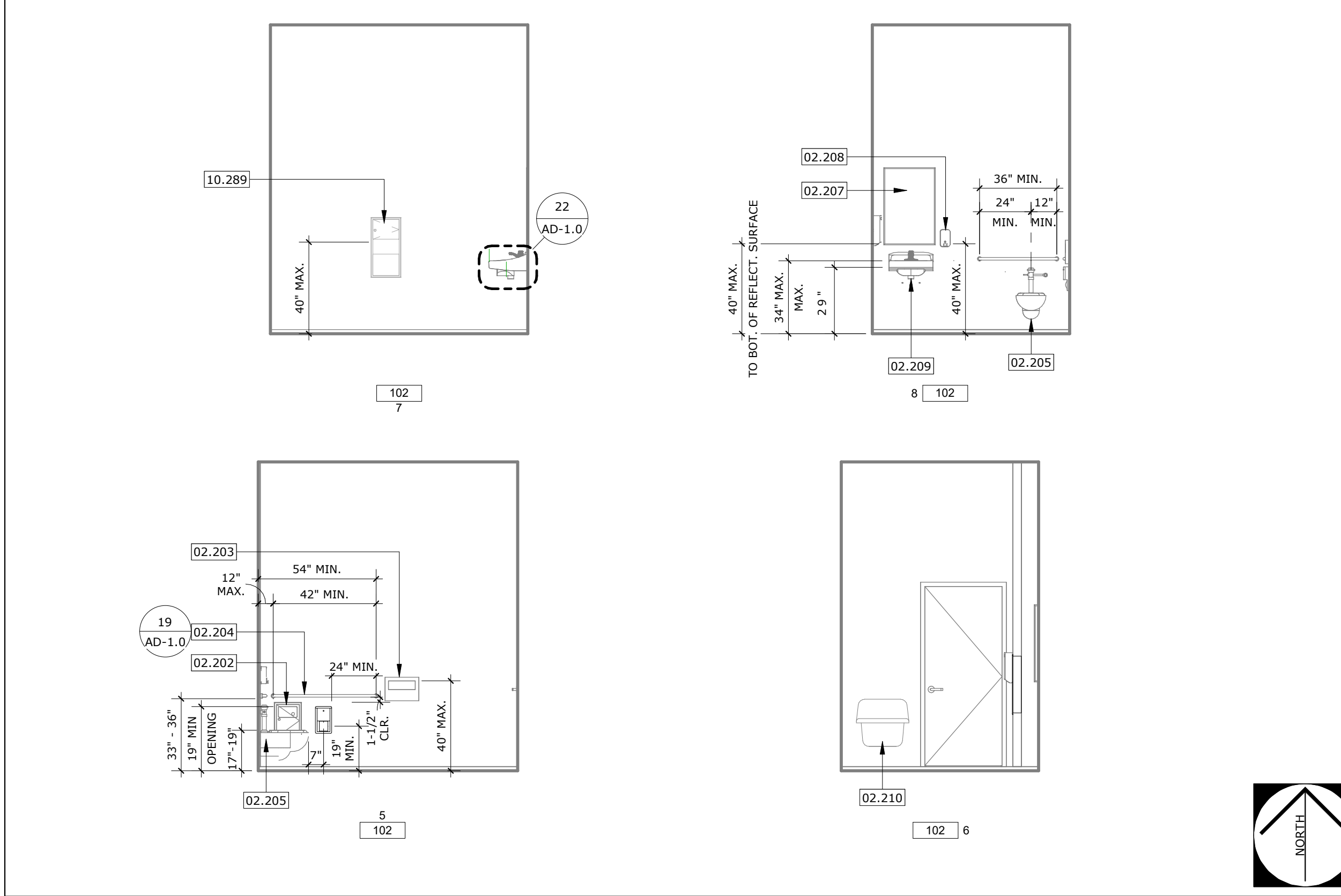
GENERAL

- UNISEX SIGNAGE PER DETAIL 13 AD-1.0
- ISA
- ROOM NUMBER 5
- ROOM NAME AD-1.0

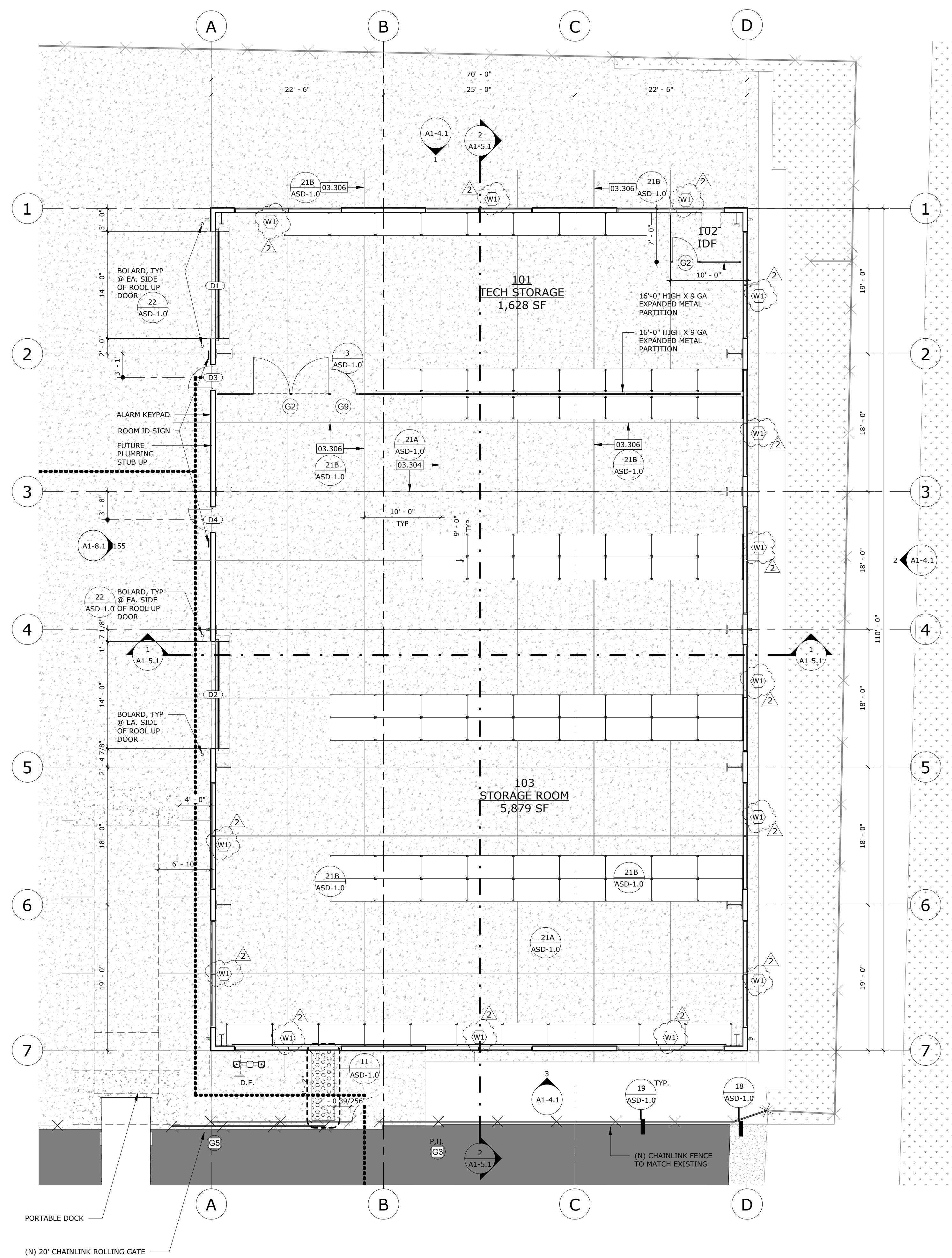
ALL EXPOSED PIPES UNDER ACCESSIBLE SINKS AND LAVATORIES SHALL BE INSULATED TO COMPLY WITH 11B-606.5.



A# 101125 (PC# 284) EXISTING RESTROOM PLAN SCALE: 1/4" = 1'-0" **2**



ROOM 102 STAFF RESTROOM SCALE: 1/4" = 1'-0" **3**



FLOOR PLAN SCALE: 1/8" = 1'-0" **1**

PROJECT No. :1-41-51
9/8/2022 3:50:02 PM

ISSUE No.	DATE	DESCRIPTION	REVISION No.	DATE	DESCRIPTION

RUHNAUCLARKE.COM

3725 TENTH STREET, RIVERSIDE CALIFORNIA 92501 (951) 684-6664 / 2751 PALMER WAY, SUITE C, CARLSBAD CALIFORNIA 92010 (760) 438-5899

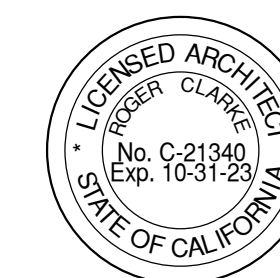
JURUPA UNIFIED SCHOOL DISTRICT STORAGE

10551 Bellegrave Avenue, Jurupa Valley CA 91752

FLOOR PLANS & INT ELEVATIONS

AS-3.1

JURUPA UNIFIED SCHOOL DISTRICT STORAGE:



AGENCY APPROVAL
DATE: 10/24/24 10:04:12 AM

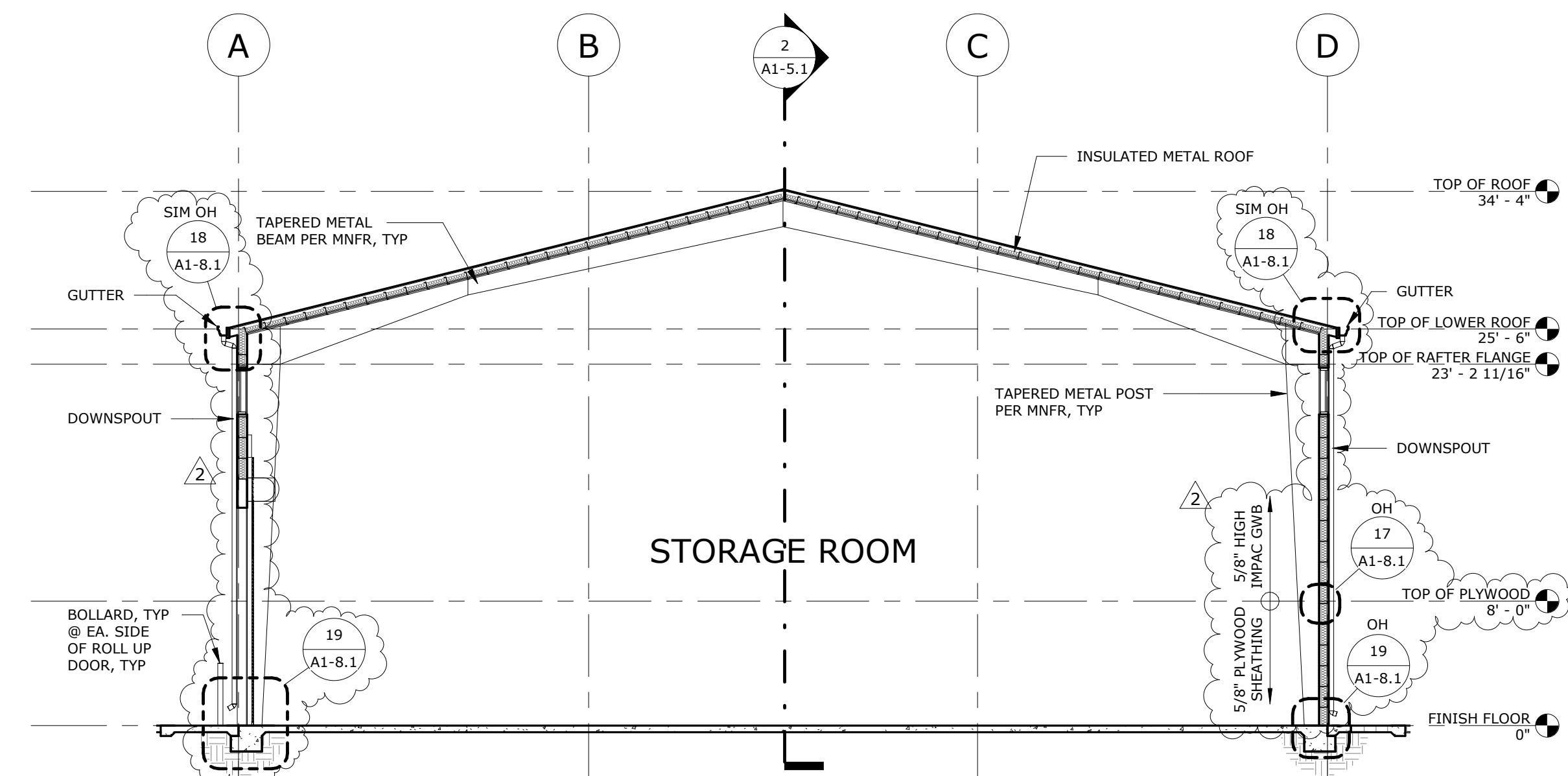
**RUHNA
CLARKE**
ARCHITECTS

STAMPS

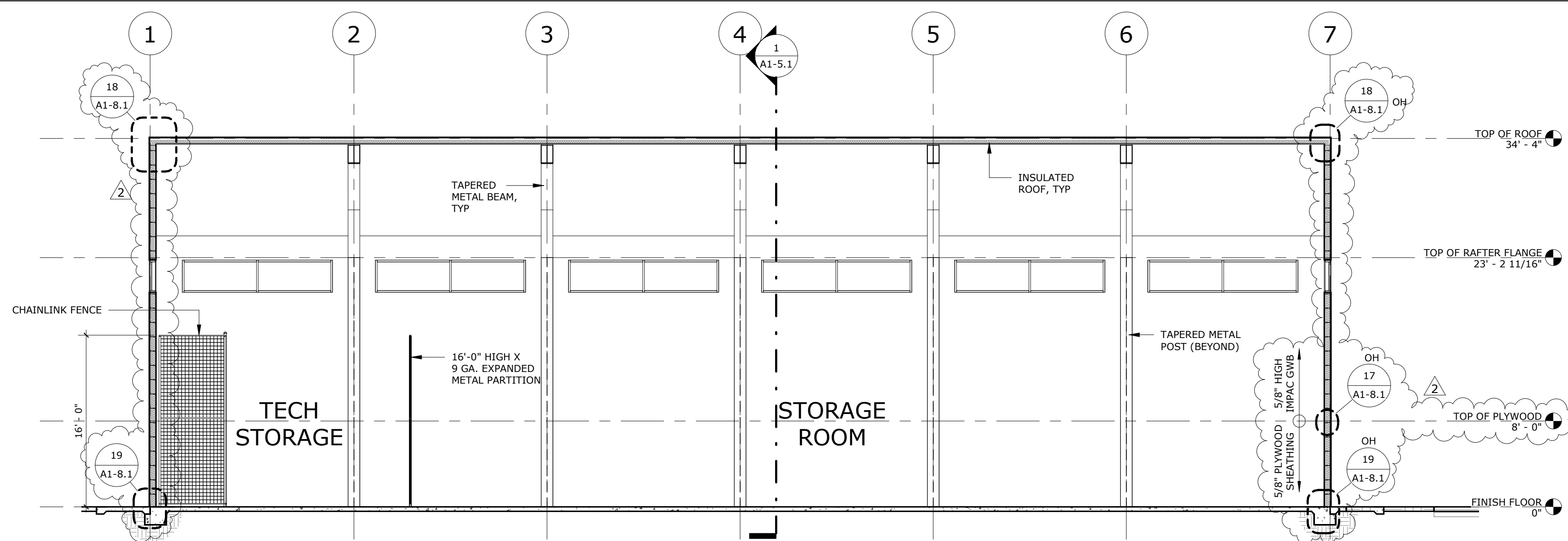
CONSULTANT BRANDING

GENERAL NOTES

1. SLAB ON GRADE: 0'-0" = GLOBAL ELEVATION: ##.##'
2. VERIFY ALL EXTERIOR ROOF OPENINGS & VENTS WITH MECHANICAL, ELECTRICAL, STRUCTURAL & PLUMBING
3. DRAWINGS, SEE DETAILS & FOR TYPICAL ROOF VENT PENETRATION DETAIL.
4. PROVIDE R-## RIGID INSULATION OVER (STRUCTURE TYPE). SEE DETAIL FOR TYPICAL ROOF CONSTRUCTION ASSEMBLY.
5. PROVIDE R-## BATT INSULATION AT ALL EXTERIOR WALLS, U.N.O. GYPSUM BOARD AND INSULATION SHALL EXTEND FULL HEIGHT OF WALL TO UNDERSIDE OF ROOF STRUCTURE
ALL EXPOSED STRUCTURE, INCLUDING MECHANICAL & PLUMBING EQUIPMENT TO BE PAINTED



BUILDING SECTION SCALE: 1/8" = 1'-0" **1**



BUILDING SECTION SCALE: 1/8" = 1'-0" **2**

PROJECT No. :1-41-51
9/9/2022 2:07:52 PM

ISSUE No.	DATE	DESCRIPTION	REVISION No.	DATE	DESCRIPTION

RUHNAUCLARKE.COM

3775 TENTH STREET, RIVERSIDE CALIFORNIA 92501 (951) 684-6647 5751 PALMER WAY, SUITE C, CARLSBAD CALIFORNIA 92010 (760) 438-5899

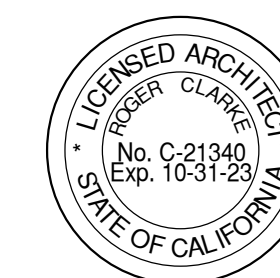
**JURUPA UNIFIED SCHOOL DISTRICT
STORAGE**

10551 Bellegrave Avenue, Jurupa Valley CA 91752

BUILDING SECTIONS

A1-5.1

JURUPA UNIFIED SCHOOL DISTRICT STORAGE:



AGENCY APPROVAL
DATE: 03-04-2024 120520

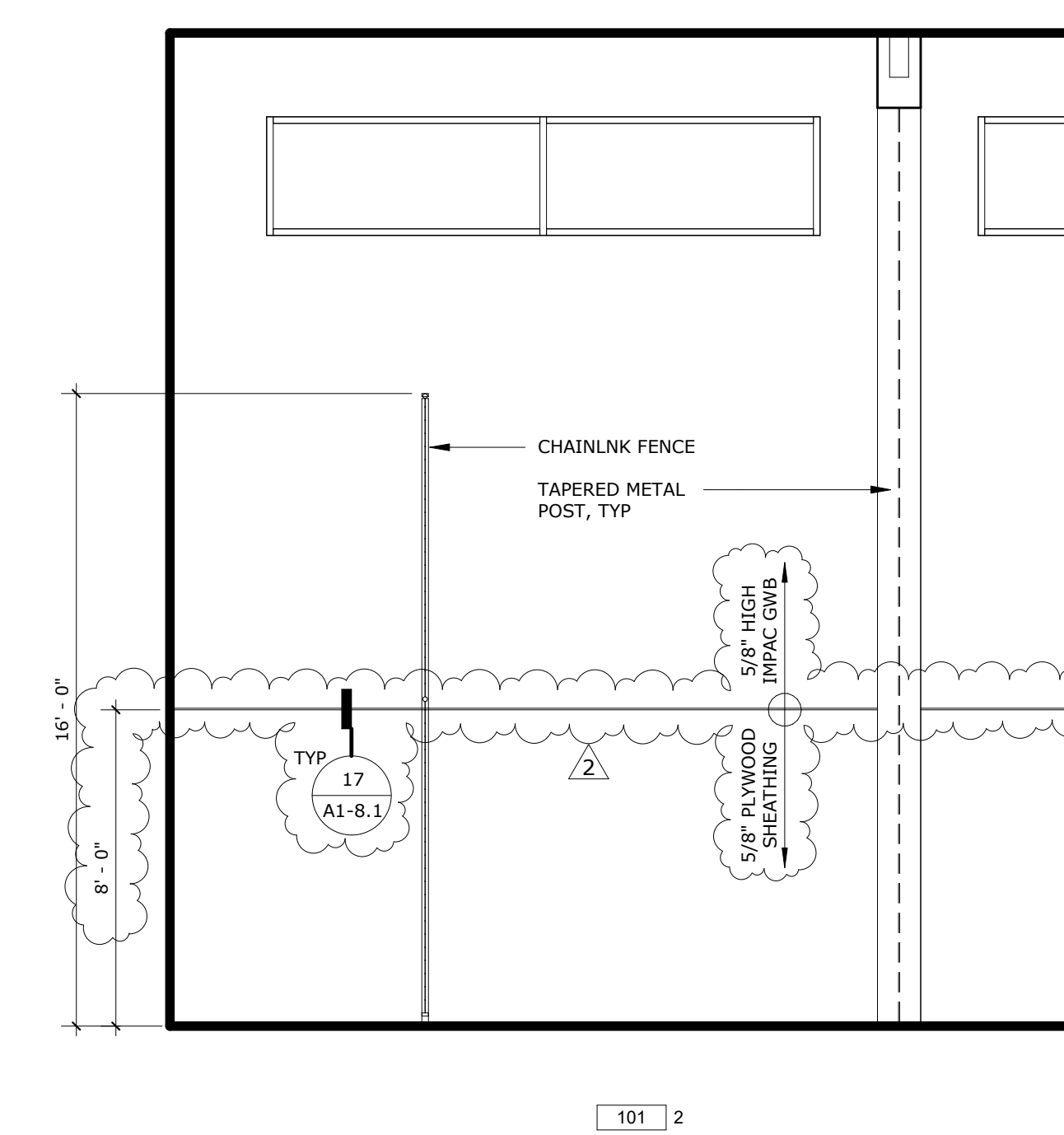
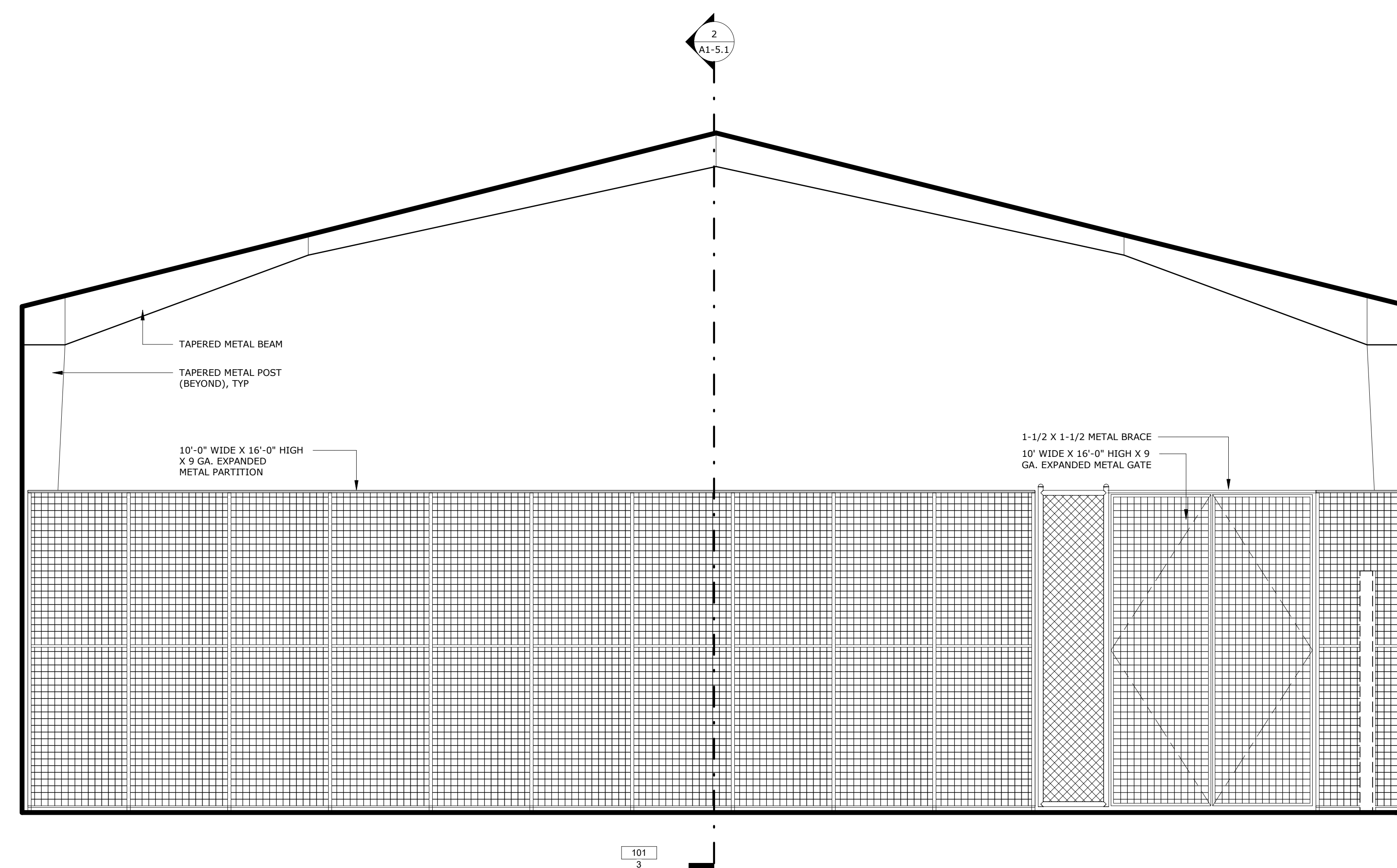
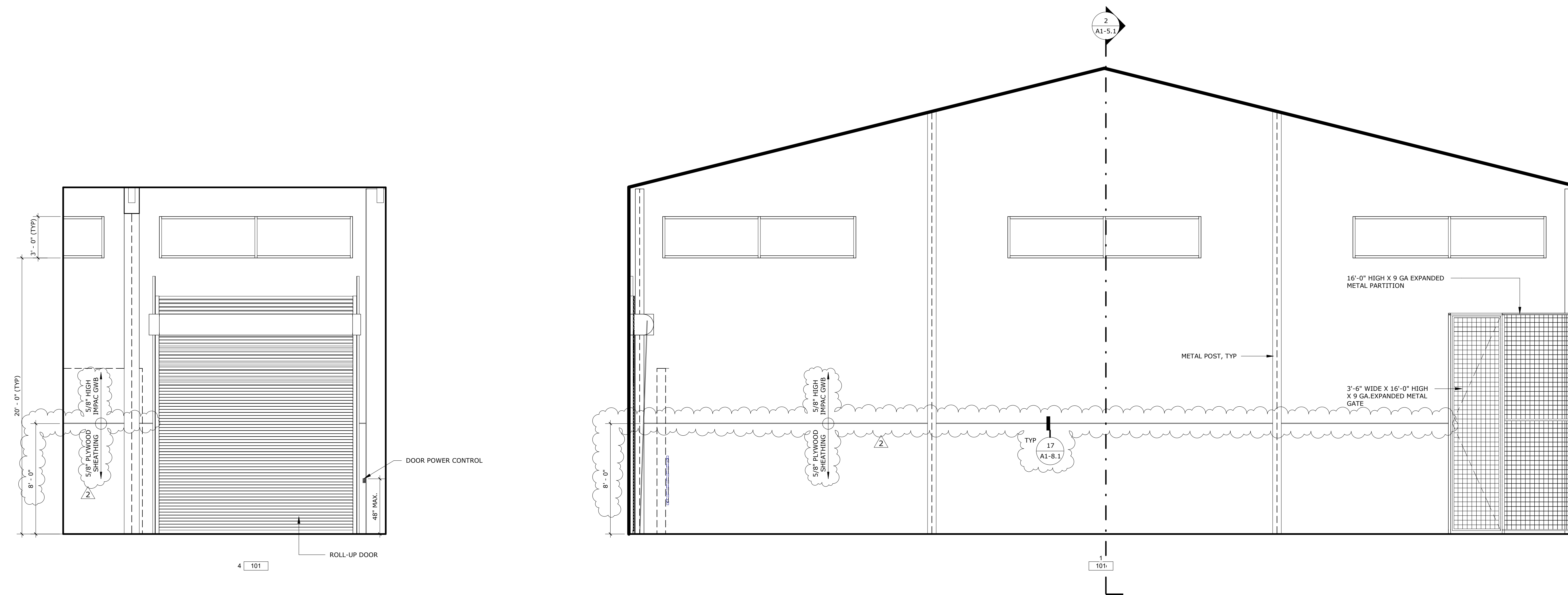
**RUHNAU
CLARKE**
ARCHITECTS

STAMPS

CONSULTANT BRANDING

GENERAL NOTES

1. VERIFY ALL DIMENSIONS PRIOR TO CONSTRUCTION.
2. ALL DIMENSIONS ARE TO FACE OF STUD, CENTERLINE OF COLUMN OR EDGE OF SLAB, U.N.O.
3. PROVIDE STUD BRACING AND SUPPORT FOR ALL WALL MOUNTED FIXTURES AND ACCESSORIES. PER DETAIL.
4. PROVIDE GROMMETS AND RINGS IN COUNTER TOPS 60" O.C. FOR POWER AND DATA.



ROOM #101 DATA ROOM SCALE: 1/4" = 1'-0" 1

PROJECT No. :1-41-51
9/8/2022 3:49:46 PM

ISSUE No.	DATE	DESCRIPTION	REVISION No.	DATE	DESCRIPTION

RUHNAUCLARKE.COM

3775 TENTH STREET, RIVERSIDE CALIFORNIA 92501 (951) 684-6647 2751 PALMER WAY, SUITE C, CARLSBAD CALIFORNIA 92010 (760) 438-3899

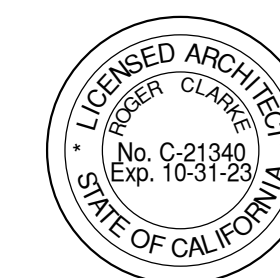
**JURUPA UNIFIED SCHOOL DISTRICT
STORAGE**

10551 Bellegrave Avenue, Jurupa Valley CA 91752

INTERIOR ELEVATIONS

A1-7.1

JURUPA UNIFIED SCHOOL DISTRICT STORAGE:



AGENCY APPROVAL
DATE: 03-04-2024 12:00:00

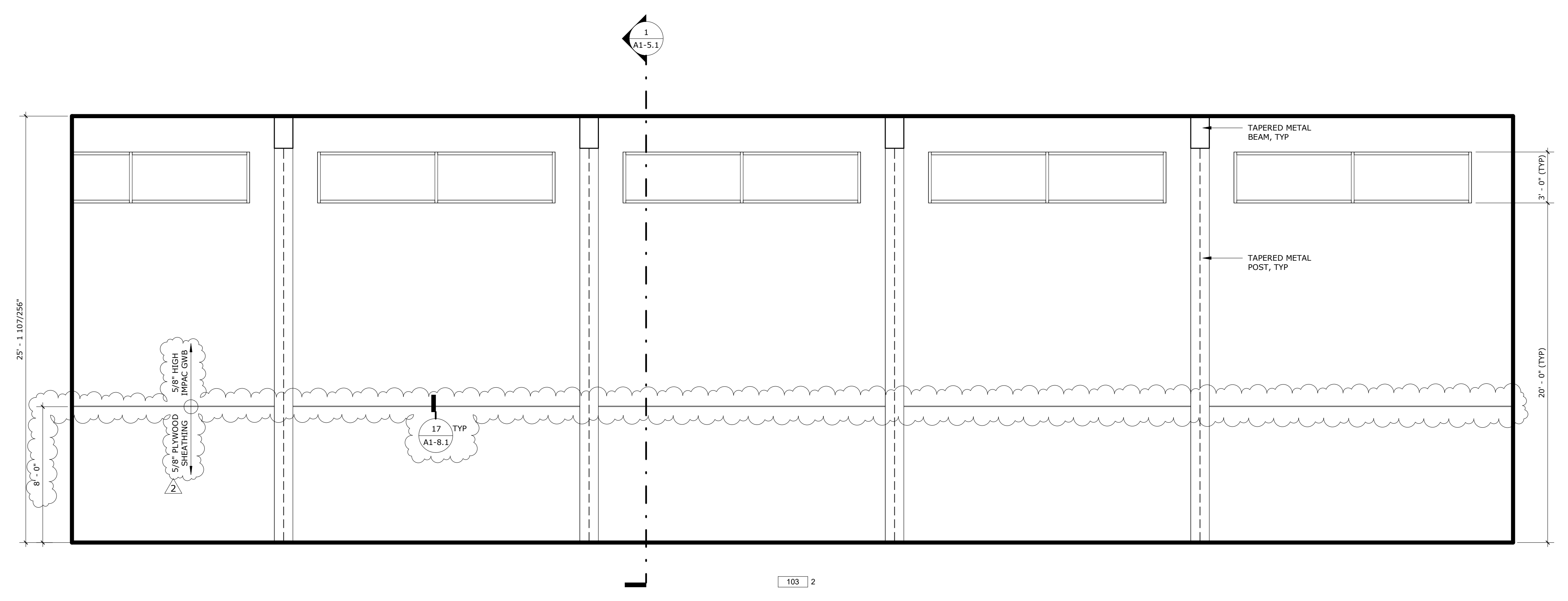
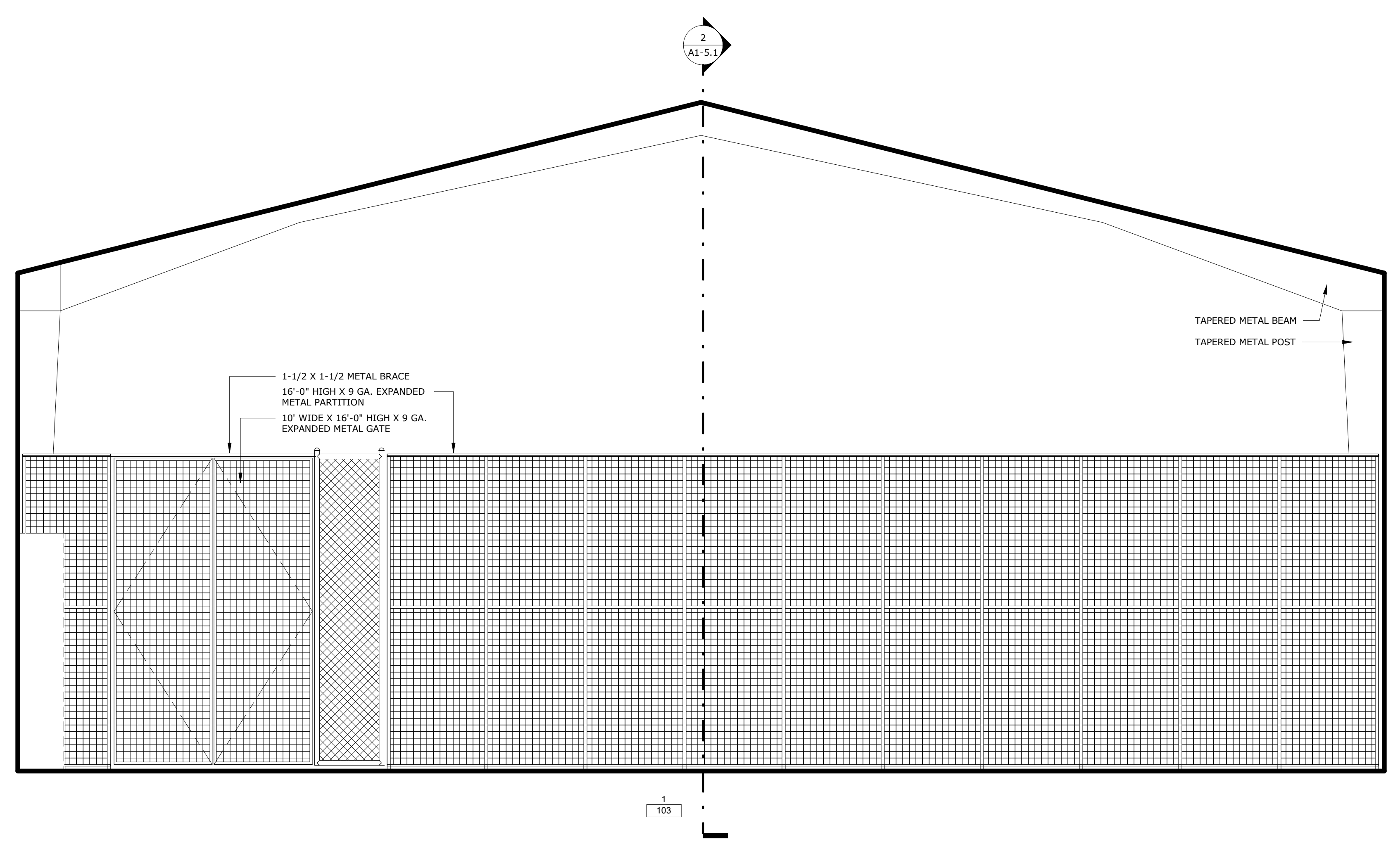
**RUHNAU
CLARKE**
ARCHITECTS

STAMPS

CONSULTANT BRANDING

GENERAL NOTES

1. VERIFY ALL DIMENSIONS PRIOR TO CONSTRUCTION.
2. ALL DIMENSIONS ARE TO FACE OF STUD, CENTERLINE OF COLUMN OR EDGE OF SLAB, U.N.O.
3. PROVIDE STUD BRACING AND SUPPORT FOR ALL WALL MOUNTED FIXTURES AND ACCESSORIES PER DETAIL.
4. PROVIDE GROMMETS AND RINGS IN COUNTER TOPS 60° O.C. FOR POWER AND DATA.



ROOM #103 STORAGE ROOM SCALE: 1/4" = 1'-0" 1

PROJECT No. :1-41-51
9/8/2022 3:49:47 PM

ISSUE No.	DATE	DESCRIPTION	REVISION No.	DATE	DESCRIPTION

RUHNAUCLARKE.COM

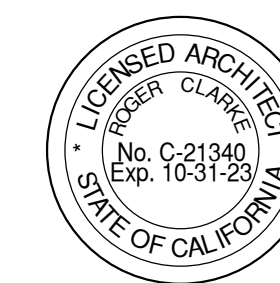
3775 TENTH STREET, RIVERSIDE CALIFORNIA 92501 (951) 684-6647 2751 PALMER WAY, SUITE C, CARLSBAD CALIFORNIA 92010 (760) 438-3899

**JURUPA UNIFIED SCHOOL DISTRICT
STORAGE**
10551 Bellegrave Avenue, Jurupa Valley CA 91752

INTERIOR ELEVATIONS

A1-7.2

JURUPA UNIFIED SCHOOL DISTRICT STORAGE:

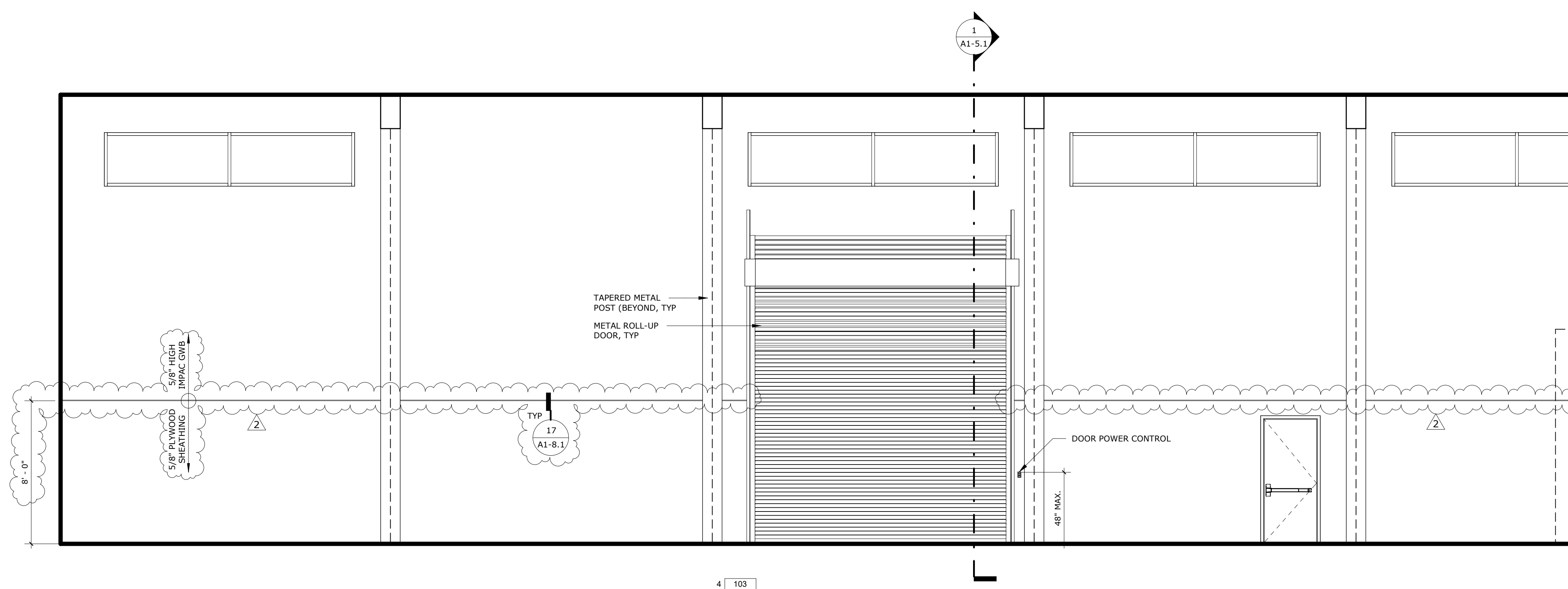
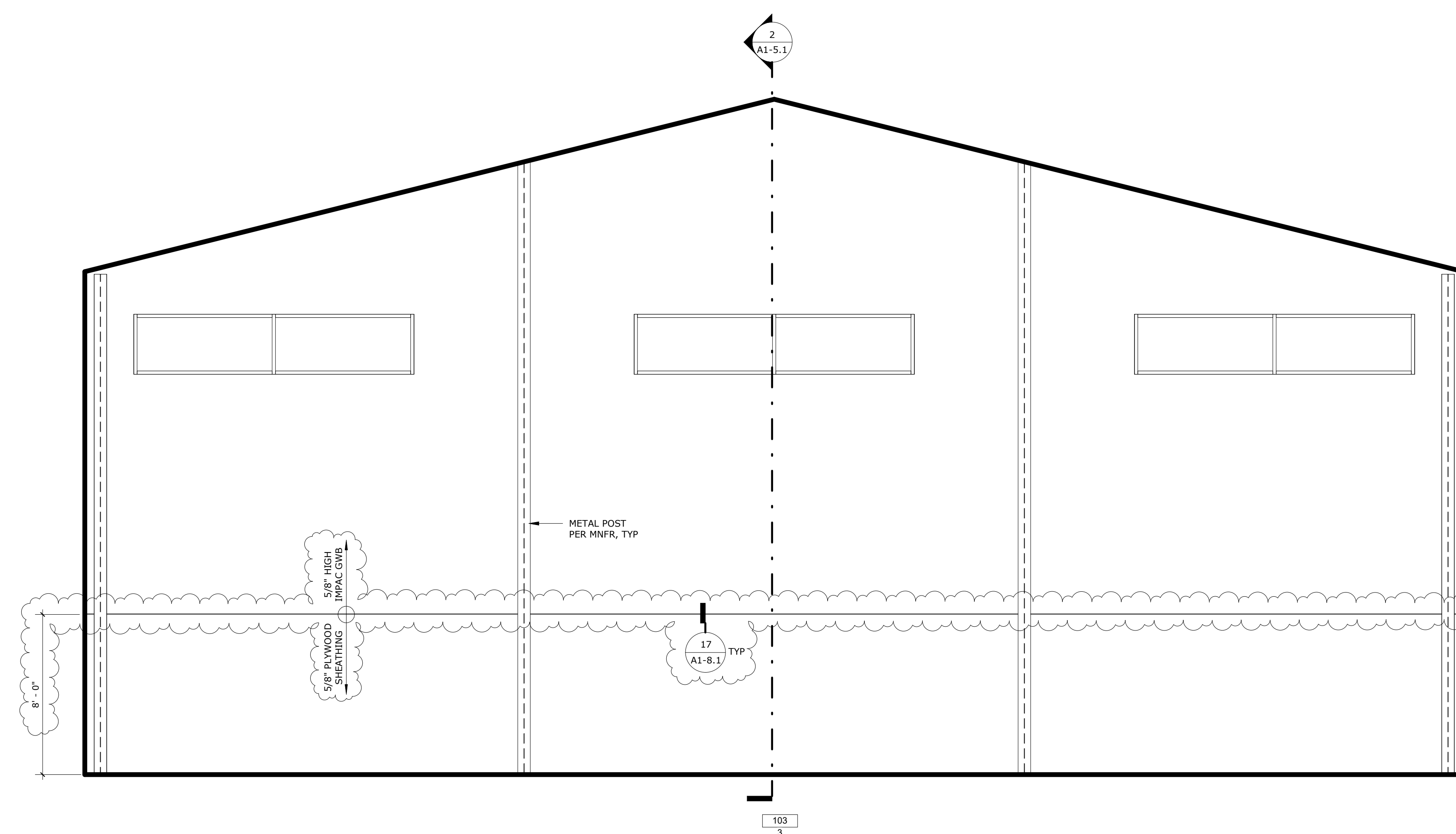


AGENCY APPROVAL
DATE: 10/24/2024 12:00:00

**RUHNAU
CLARKE**
ARCHITECTS

STAMPS

CONSULTANT BRANDING



ROOM #103 STORAGE ROOM

SCALE: 1/4" = 1'-0"

1

PROJECT No. :1-41-51
9/8/2022 3:49:48 PM

ISSUE No.	DATE	DESCRIPTION	REVISION No.	DATE	DESCRIPTION

RUHNAUCLARKE.COM

3775 TENTH STREET, RIVERSIDE CALIFORNIA 92501 (951) 684-6647 2751 PALMER WAY, SUITE C, CARLSBAD CALIFORNIA 92010 (760) 438-5899

**JURUPA UNIFIED SCHOOL DISTRICT
STORAGE**

10551 Bellegrave Avenue, Jurupa Valley CA 91752

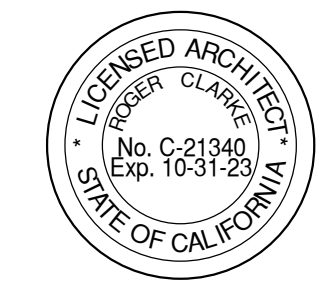
INTERIOR ELEVATIONS

A1-7.3

JURUPA UNIFIED SCHOOL DISTRICT STORAGE:

DOOR SCHEDULE

DOOR NO.	DOOR TYPE	EXTERIOR	WIDTH	DOOR HEIGHT	THICKNESS	MATERIAL	FINISH	FRAME				PANIC HARDWARE	HARDWARE GROUP	REMARKS	DOOR NO.		
								MATERIAL	FINISH	HEAD	JAMB 1					JAMB 2	SILL/THRESHOLD
D1	A	*	14'-0"	14'-0"	1"	STL	PSG	STL	PSG	5/A1-8.1	6/A1-8.1	6/A1-8.1	7/A1-8.1		05	MOTORIZED ROLL UP GATE	D1
D2	A	*	14'-0"	14'-0"	1"	STL	PSG	STL	PSG	5/A1-8.1	6/A1-8.1	6/A1-8.1	7/A1-8.1		05	MOTORIZED ROLL UP GATE	D2
D3	B	*	3'-0"	7'-0"	1 3/4"	HMD	PSG	HMD	PSG	2/A1-8.1	3/A1-8.1	3/A1-8.1	4/AD-6.0		01		D3
D4	B	*	3'-0"	7'-0"	1 3/4"	HMD	PSG	HMD	PSG	2/A1-8.1	3/A1-8.1	3/A1-8.1	4/AD-6.0		01		D4



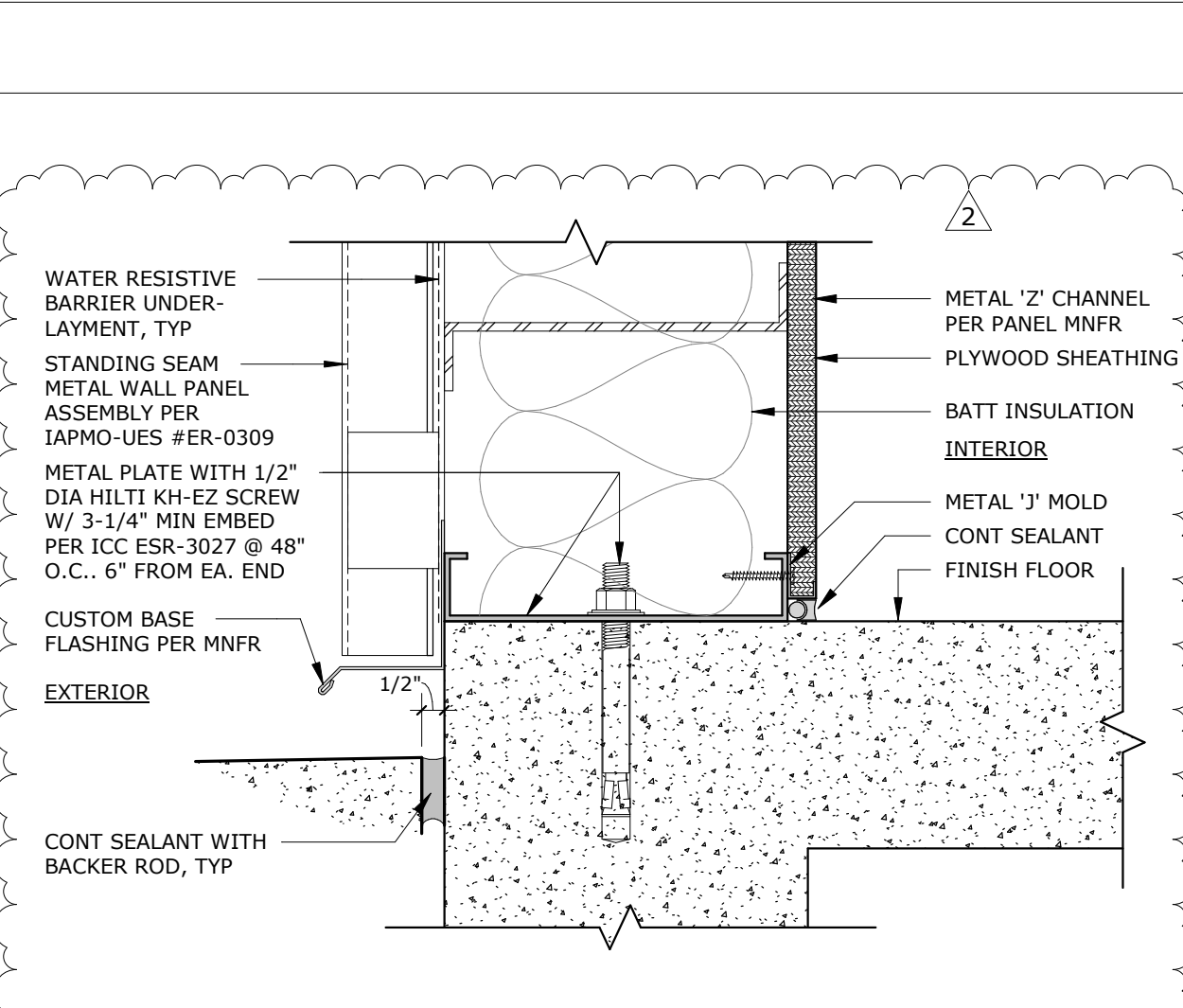
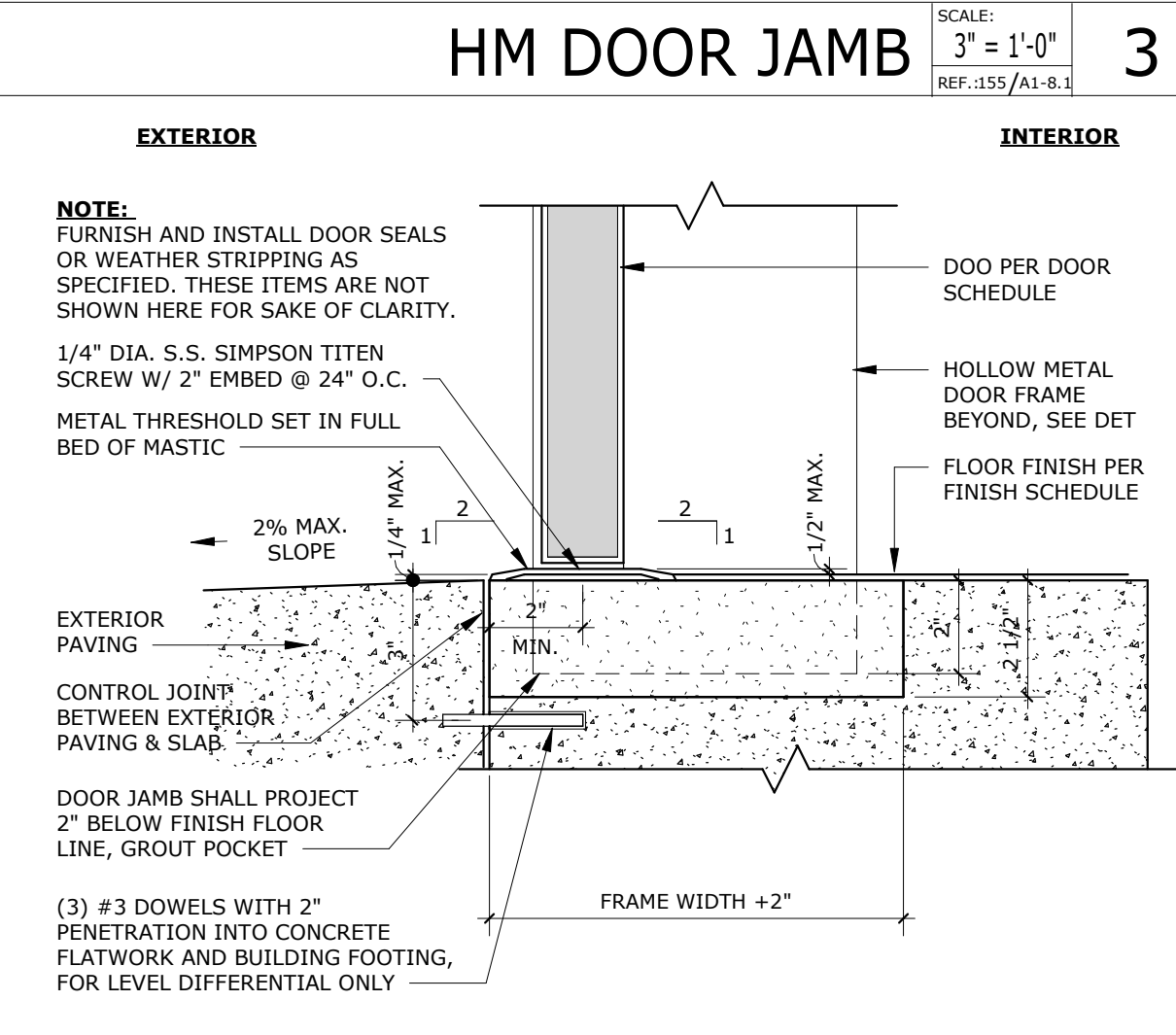
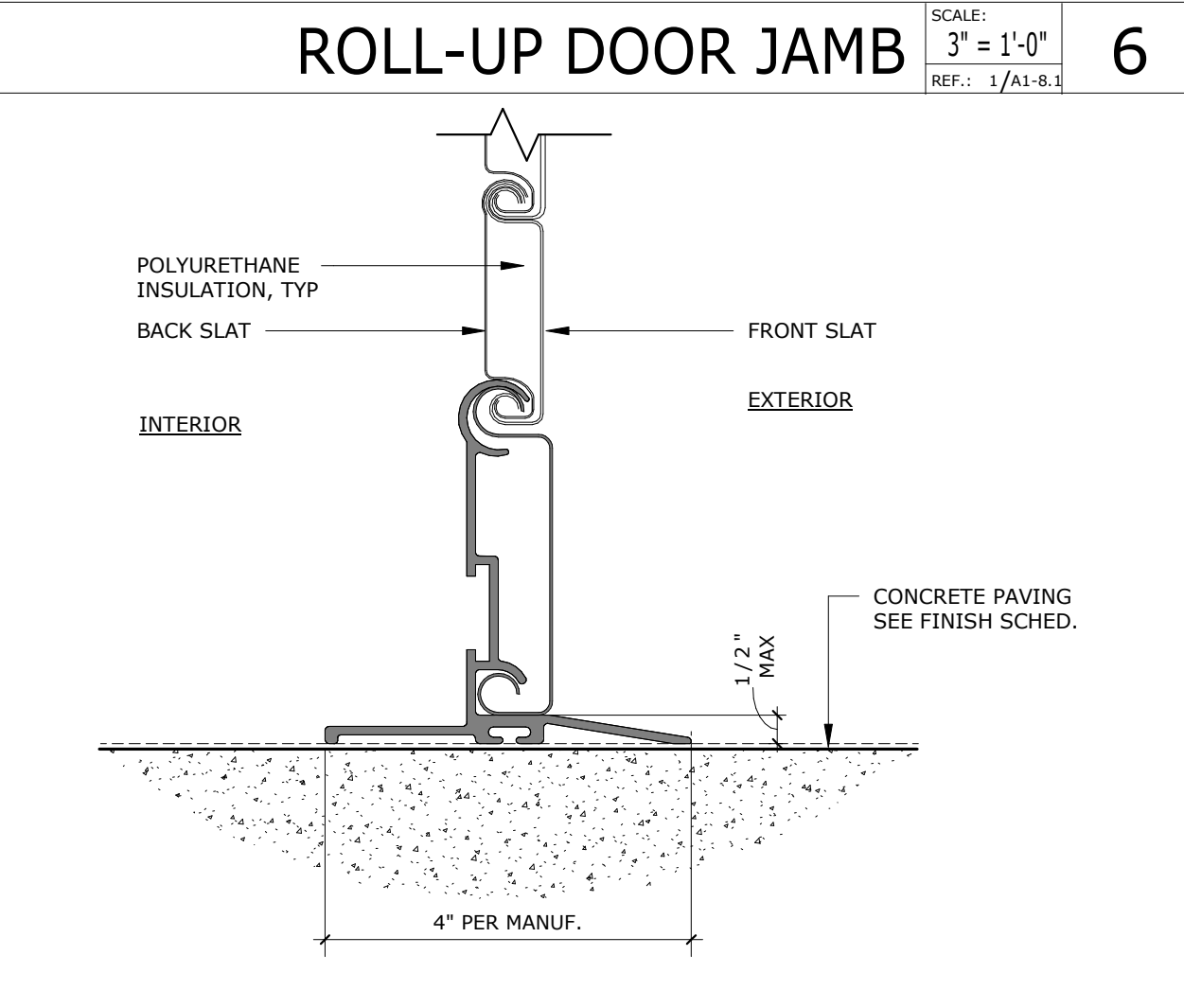
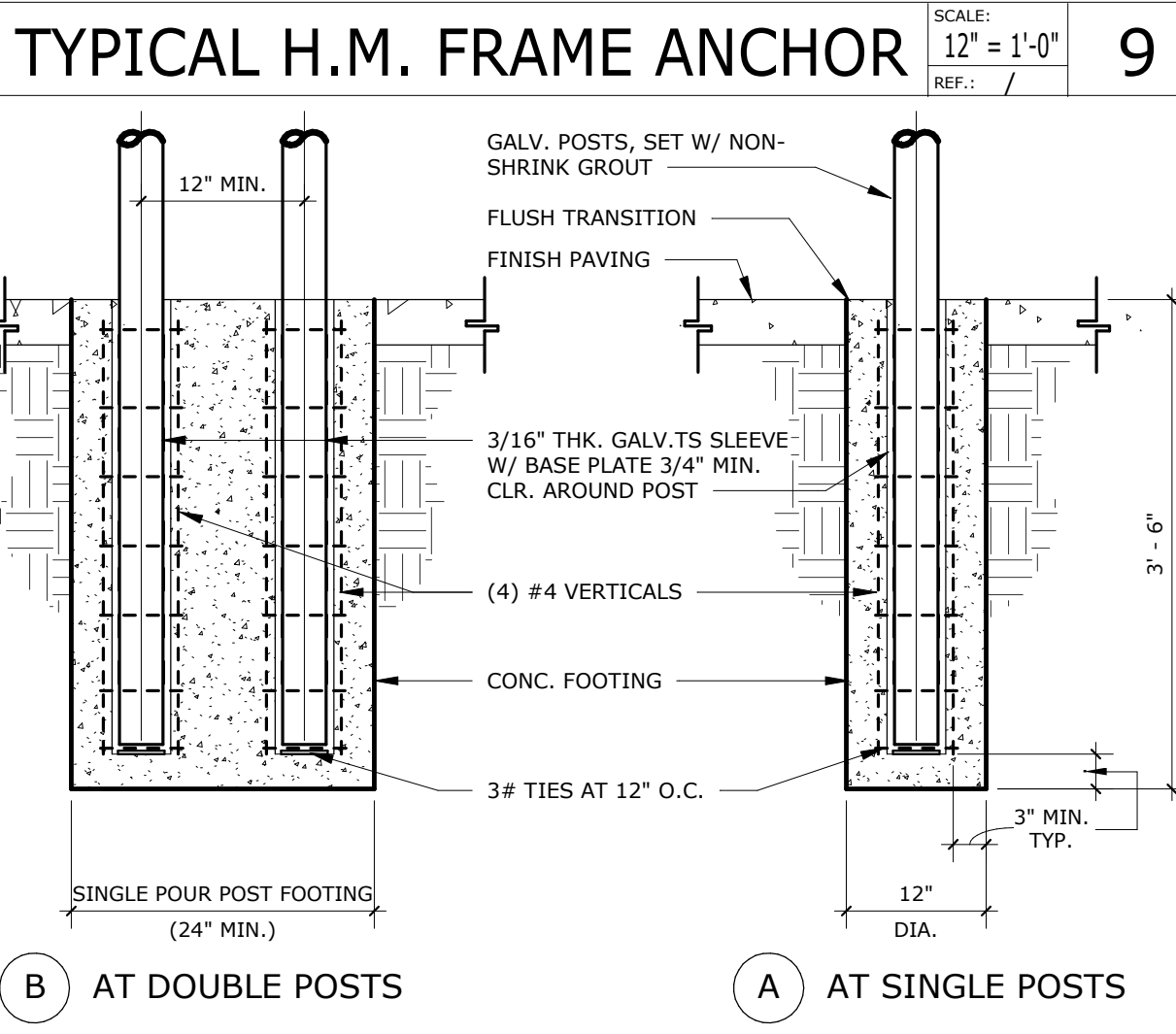
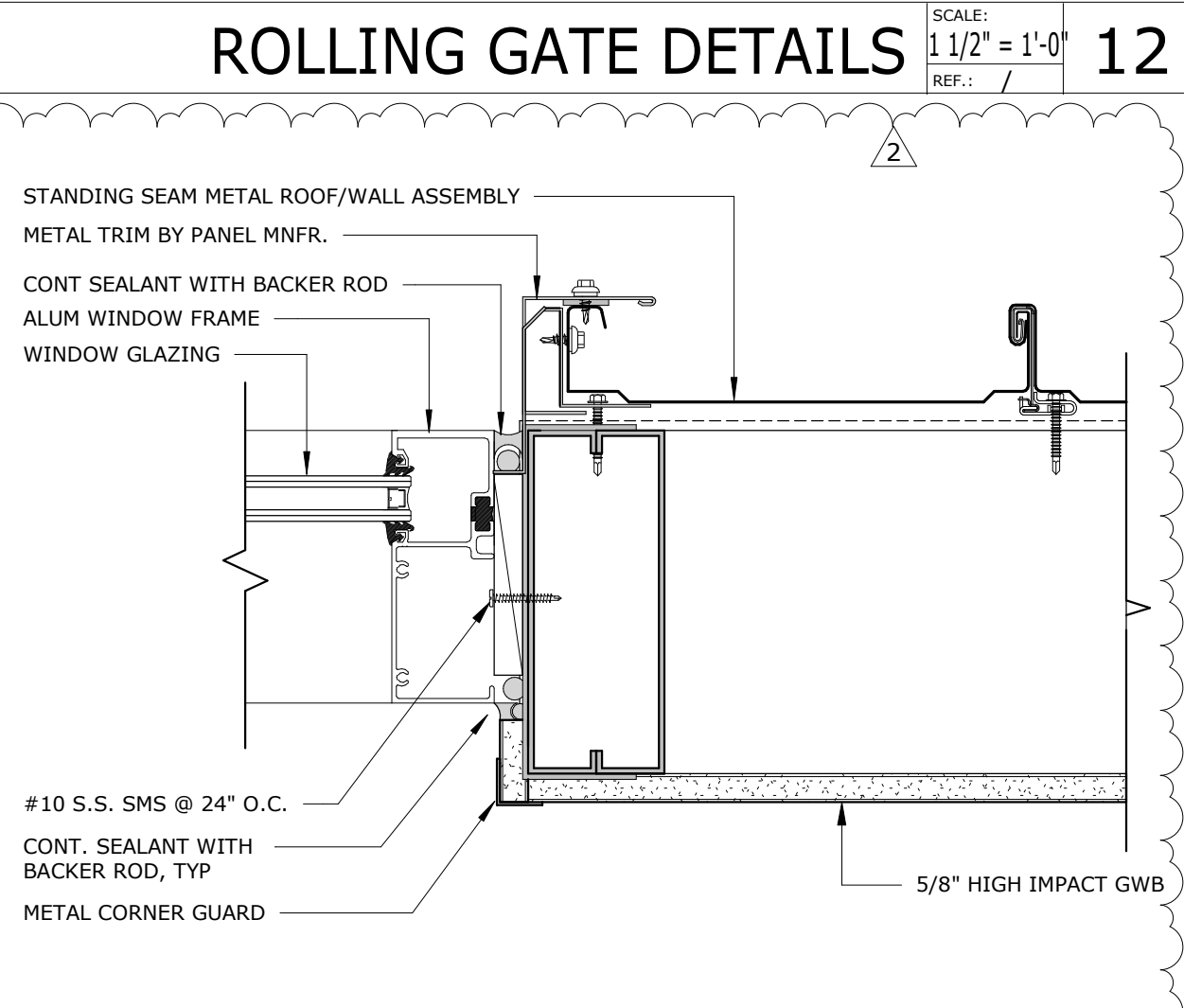
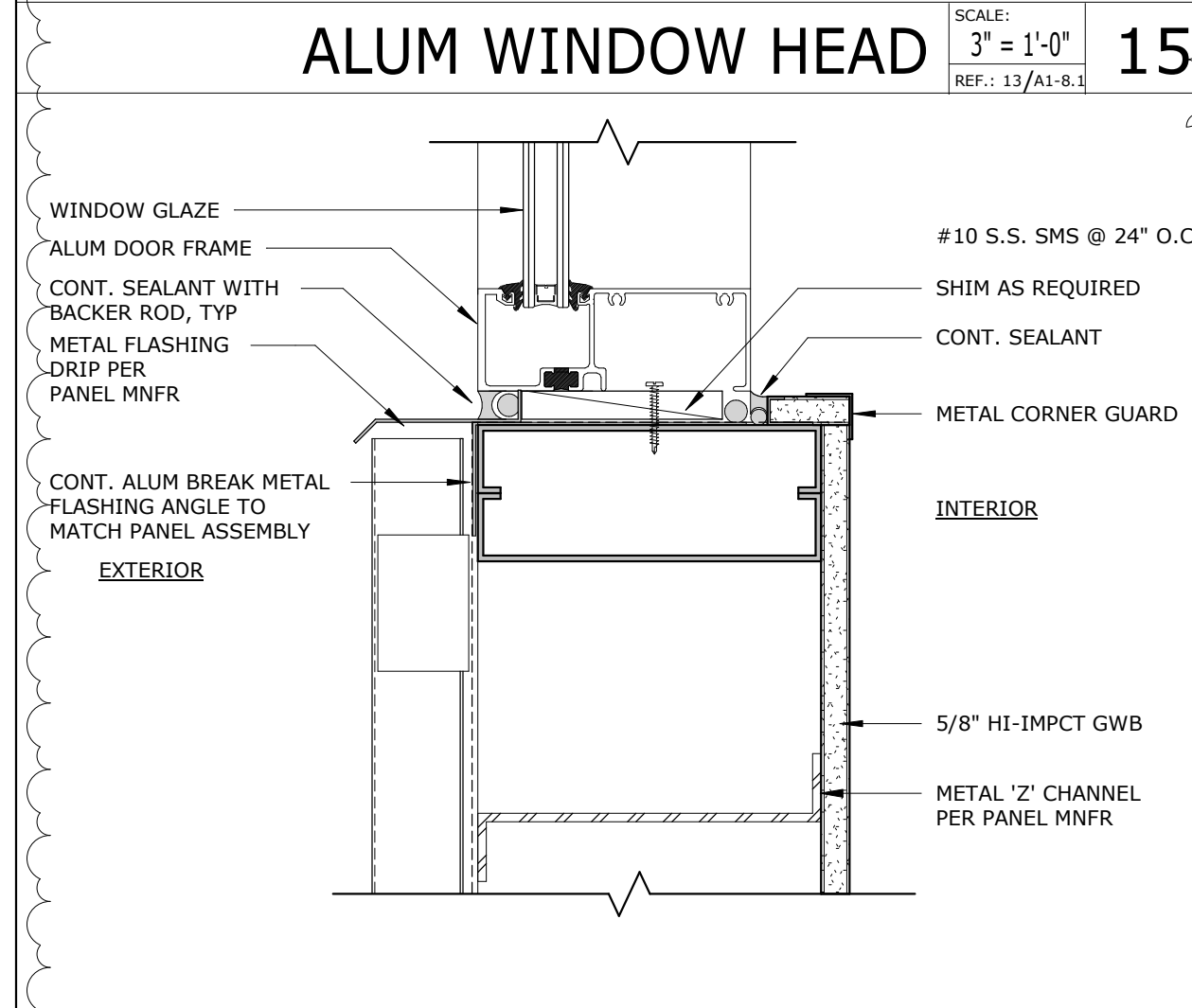
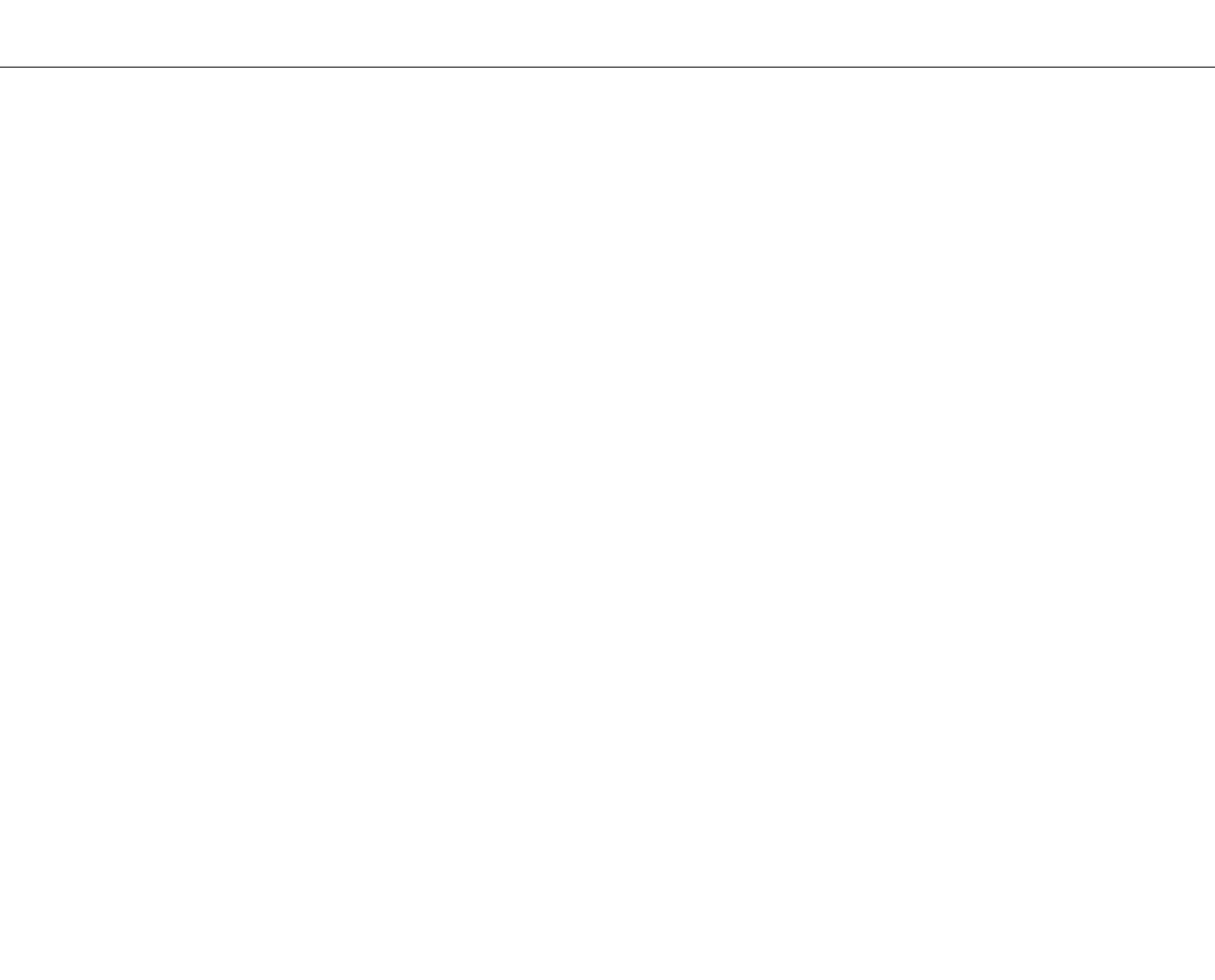
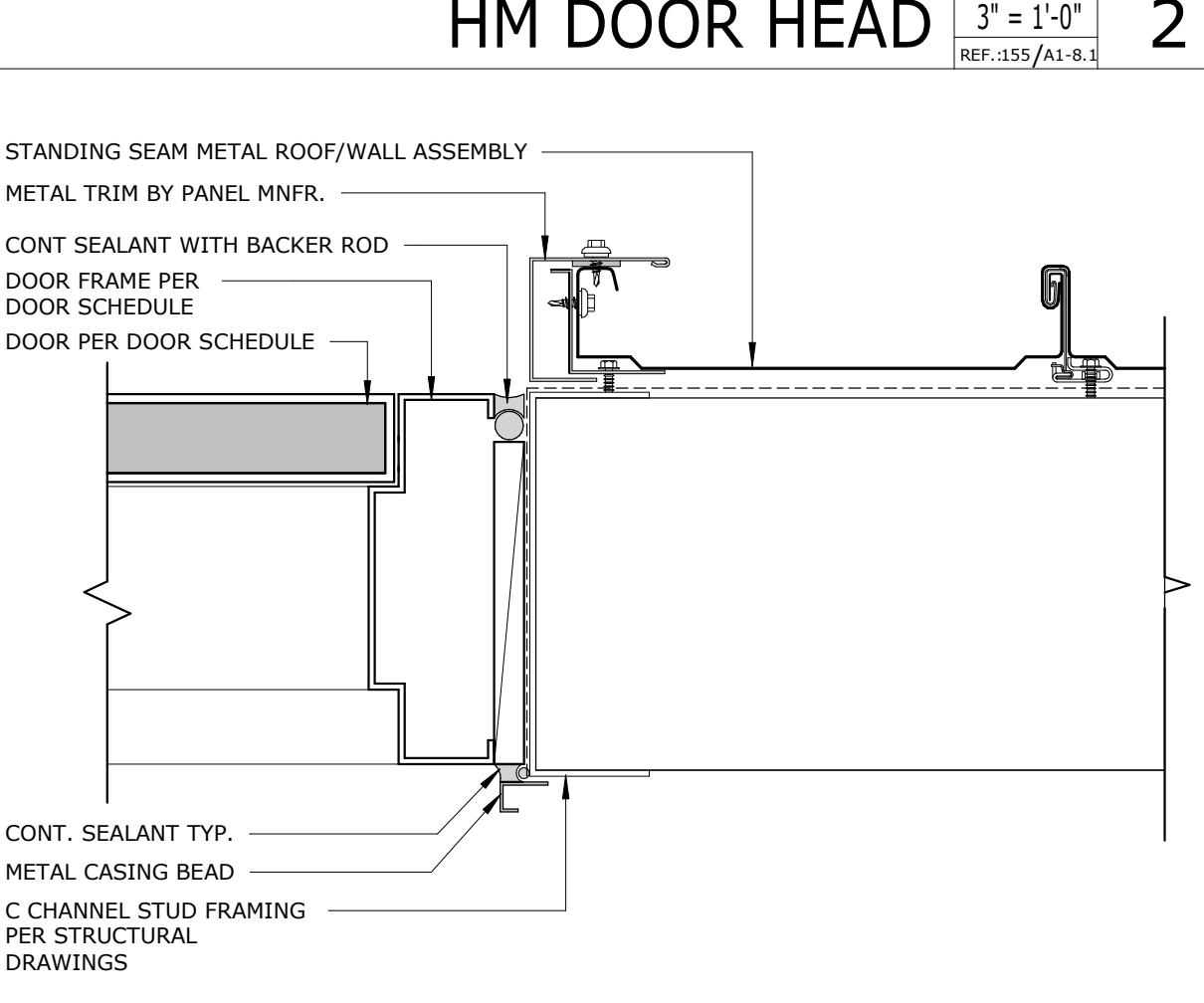
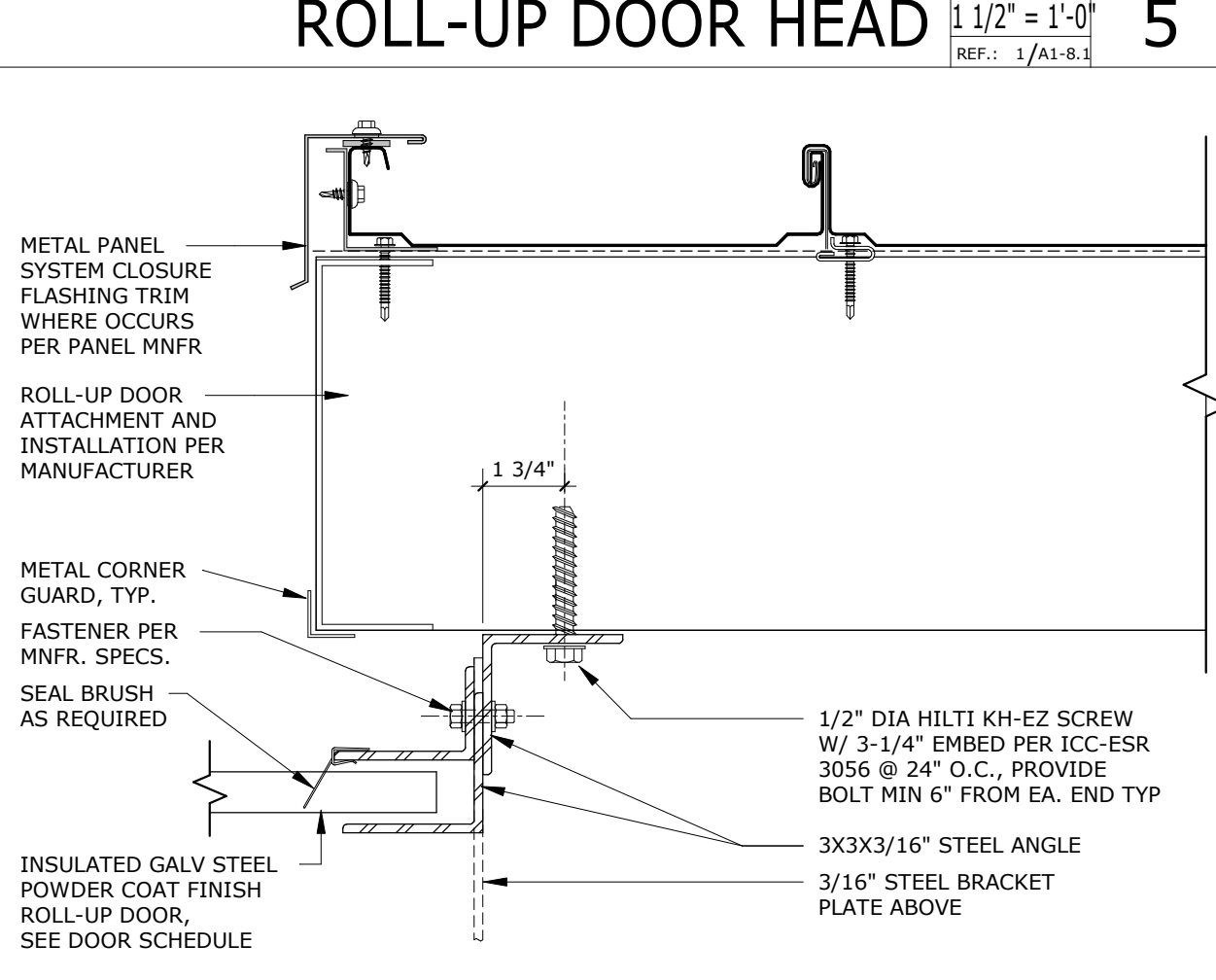
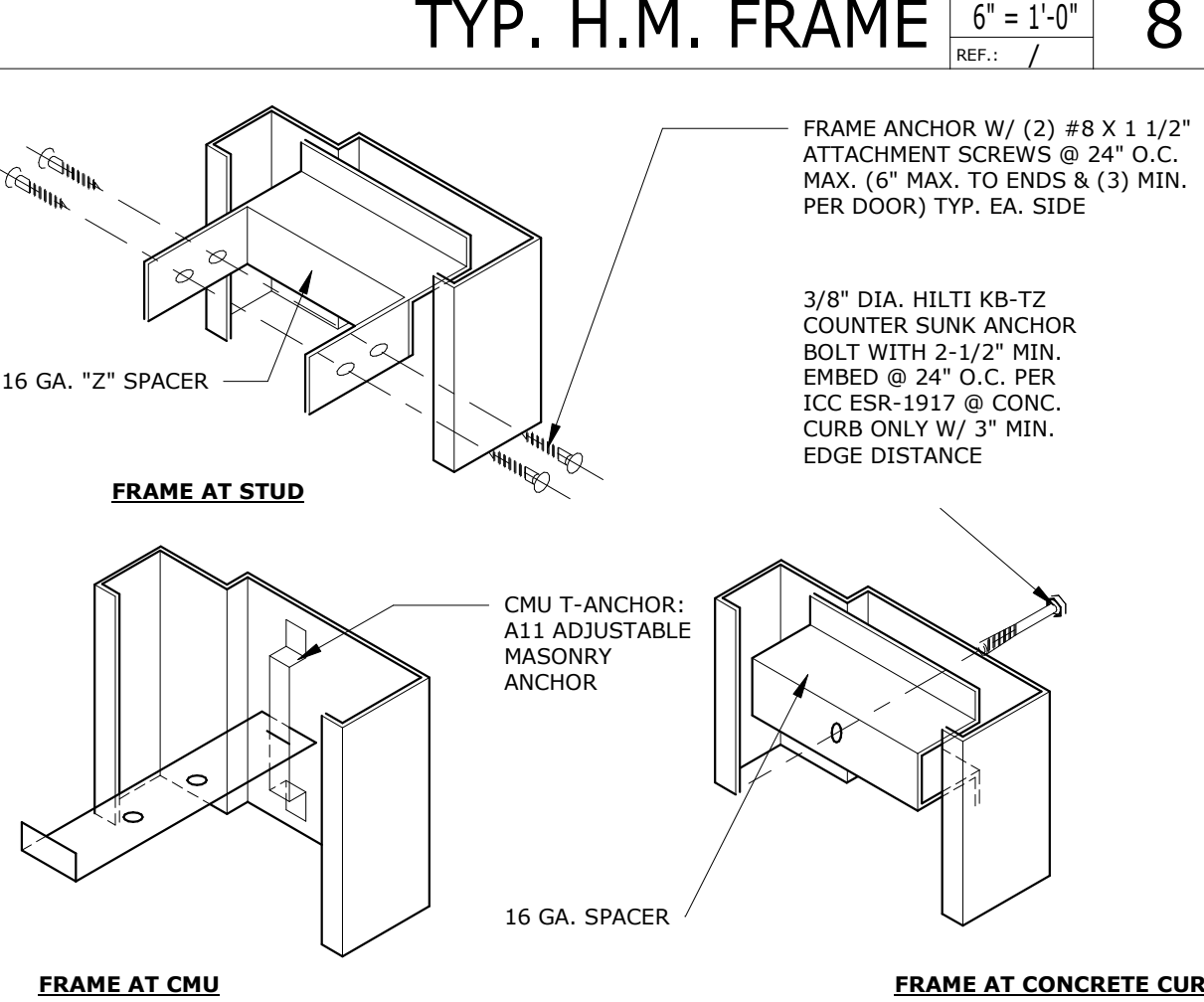
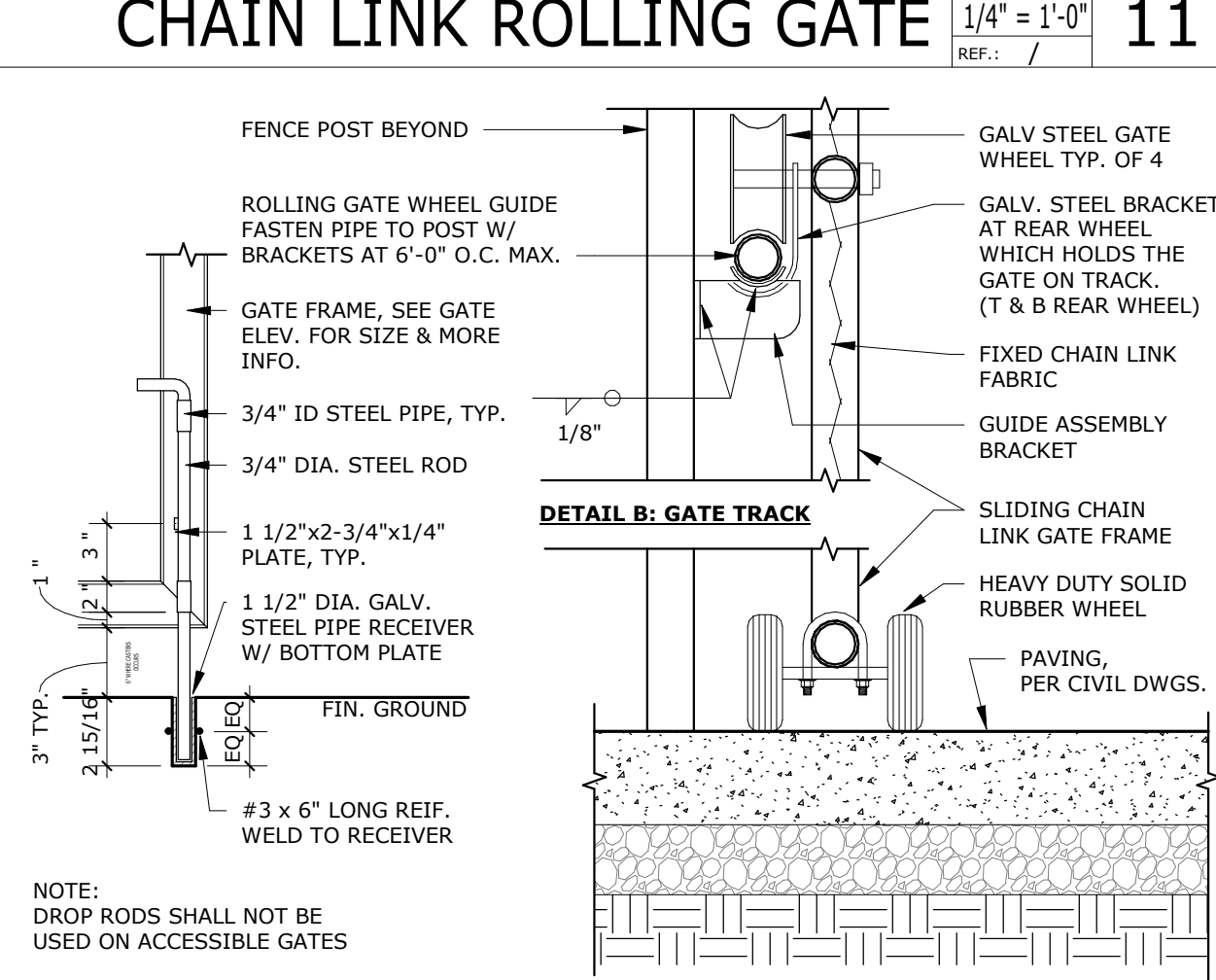
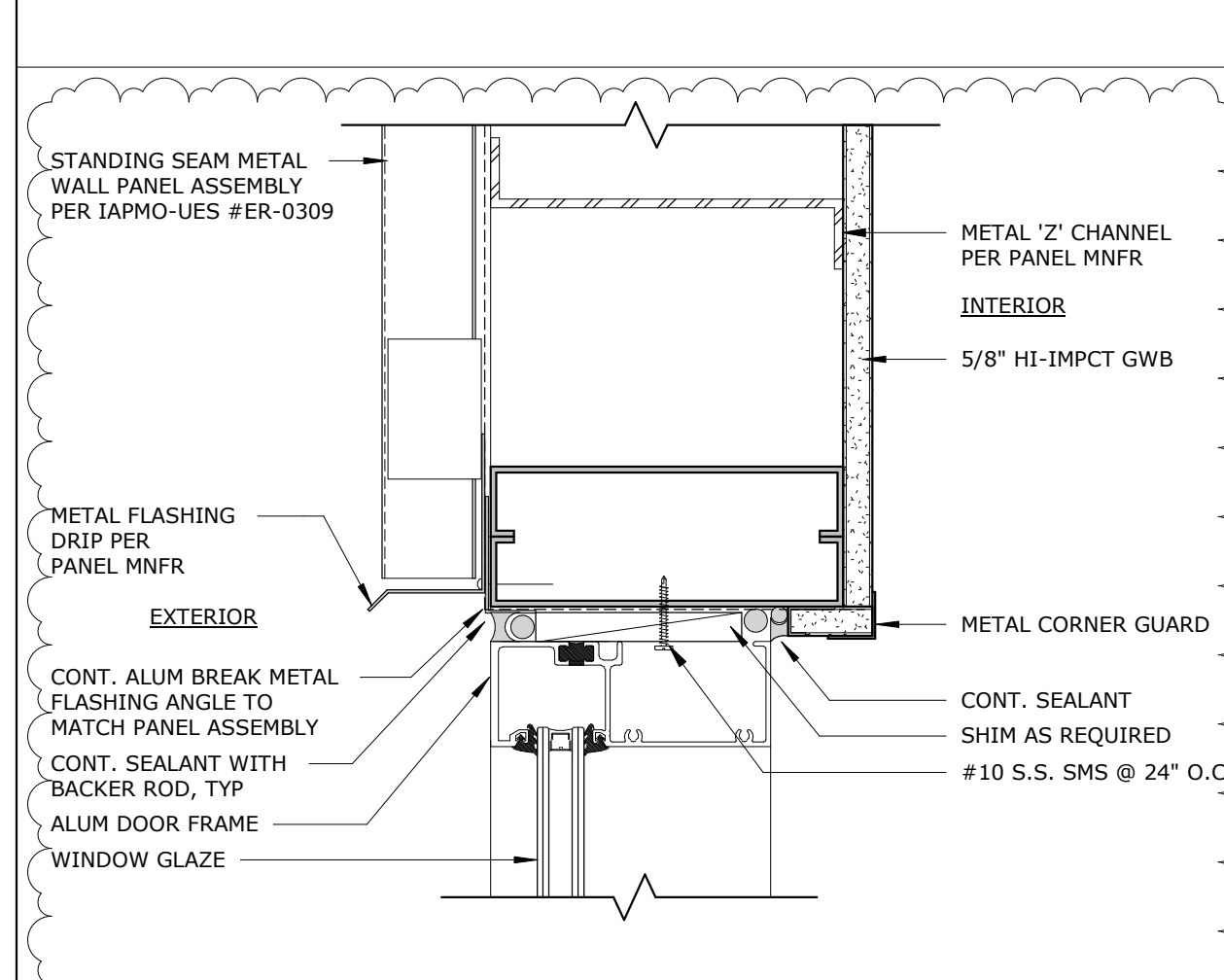
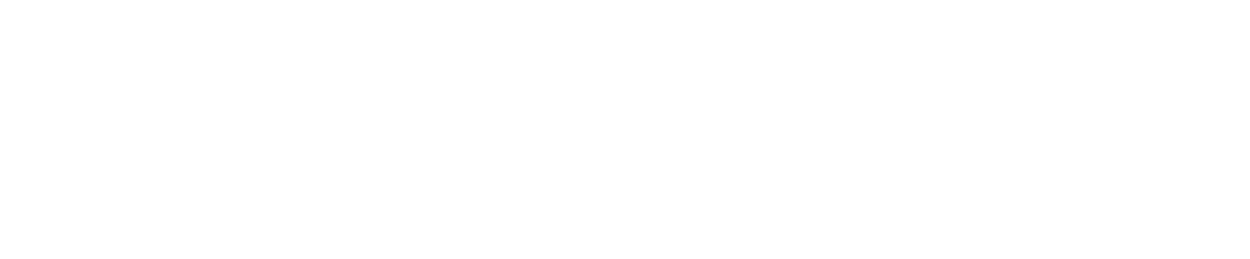
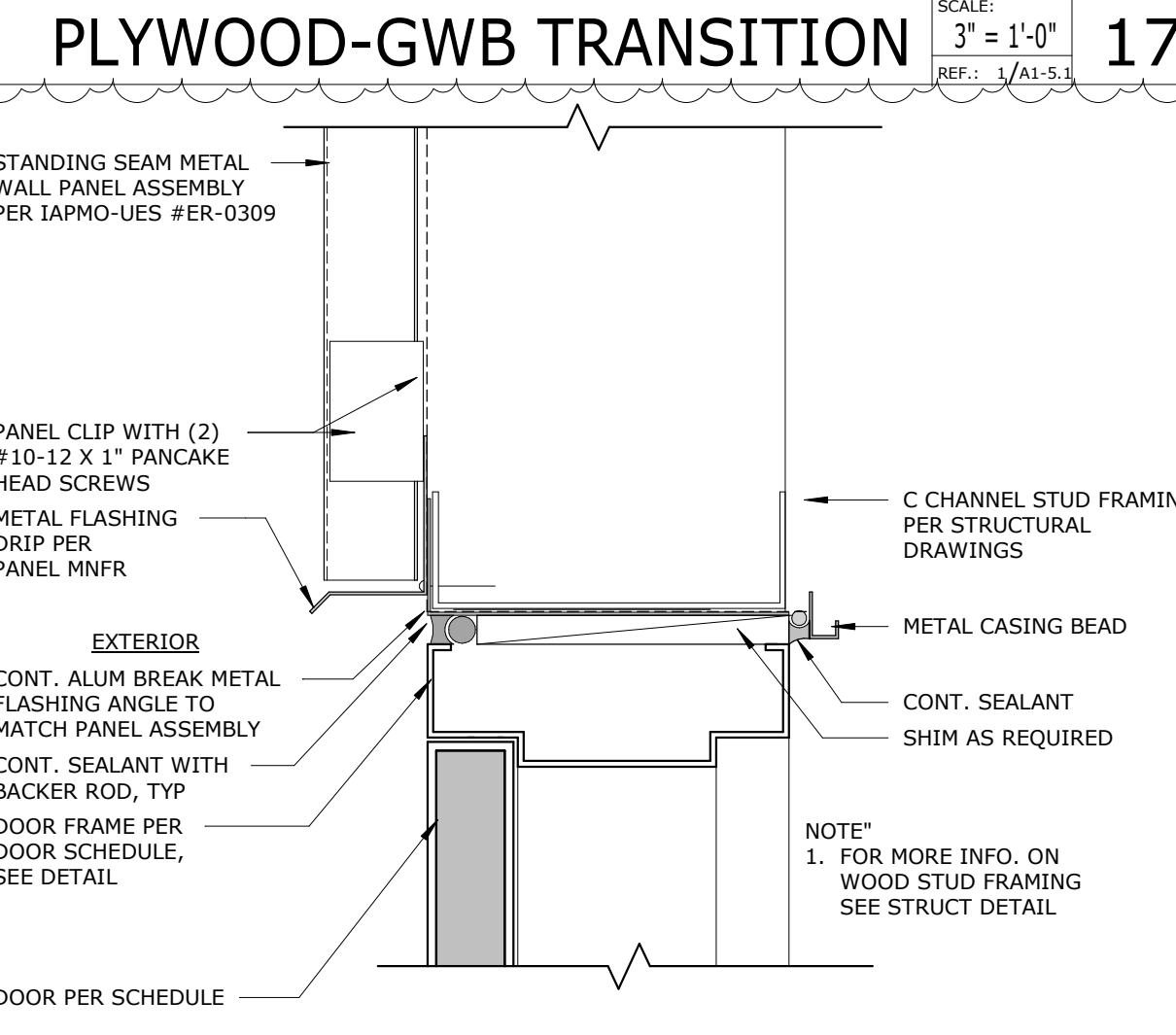
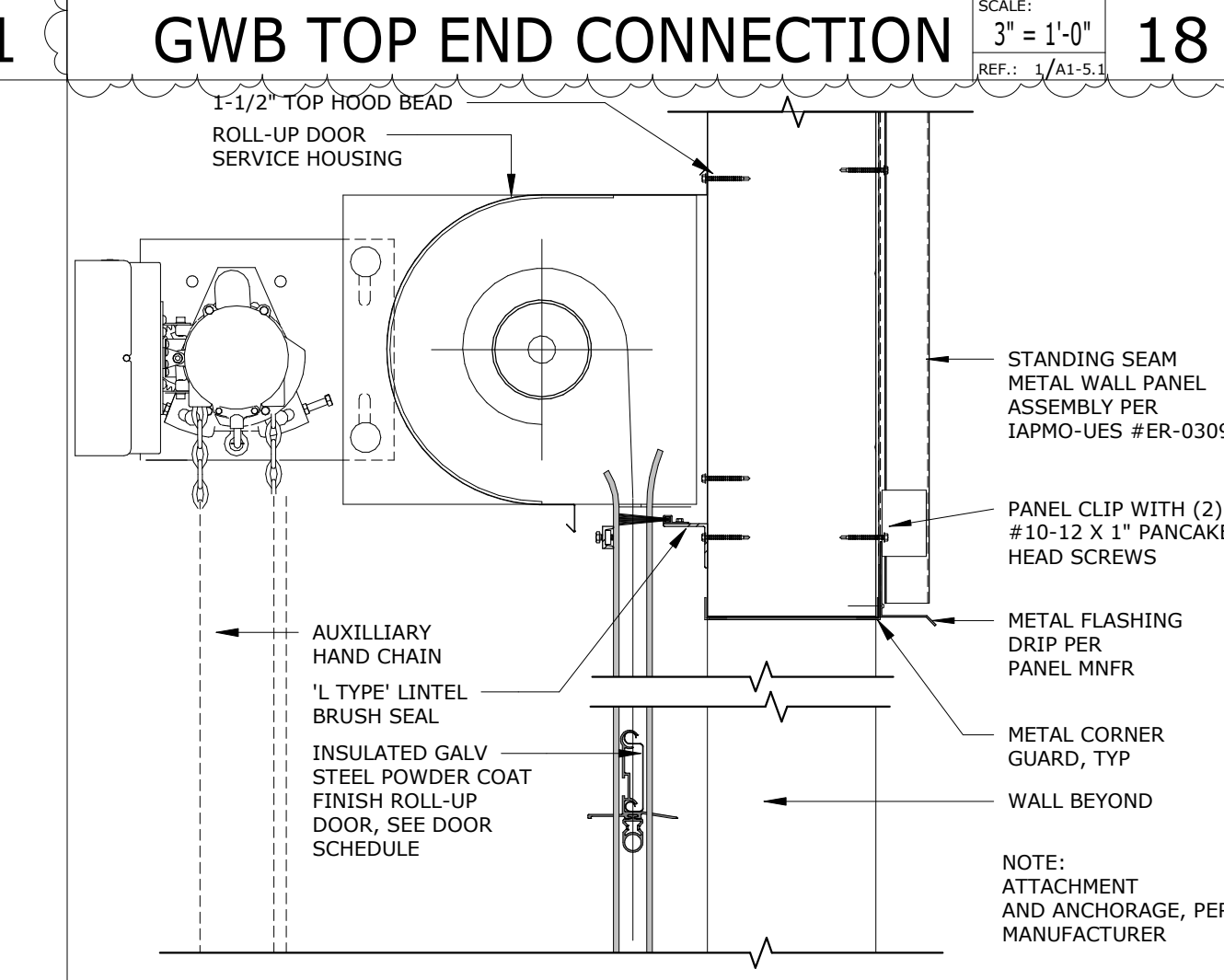
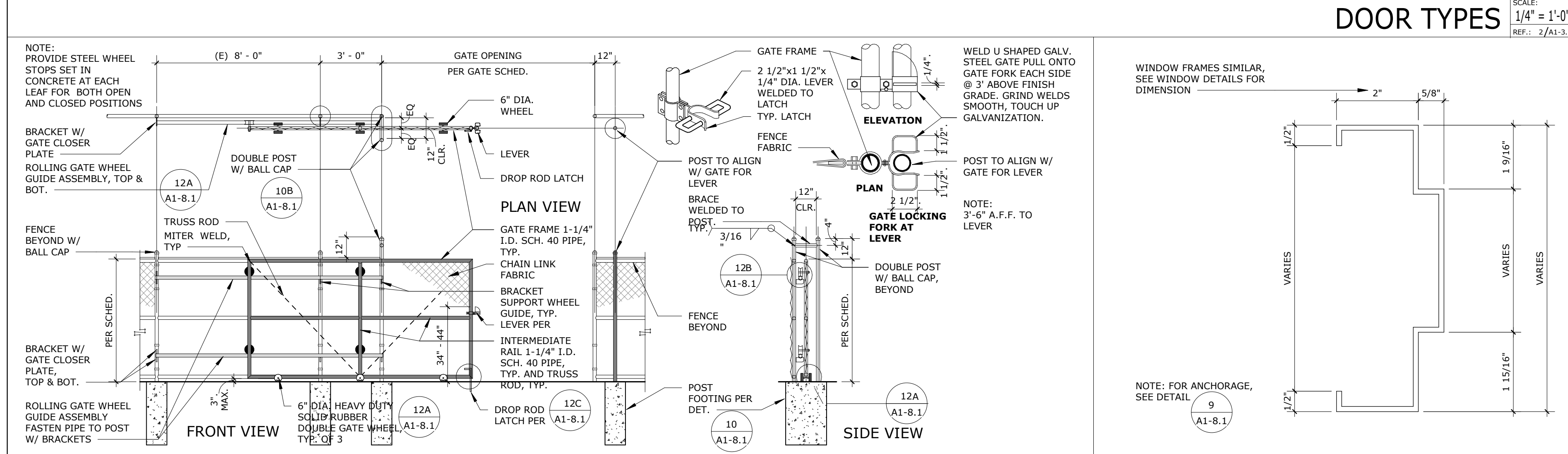
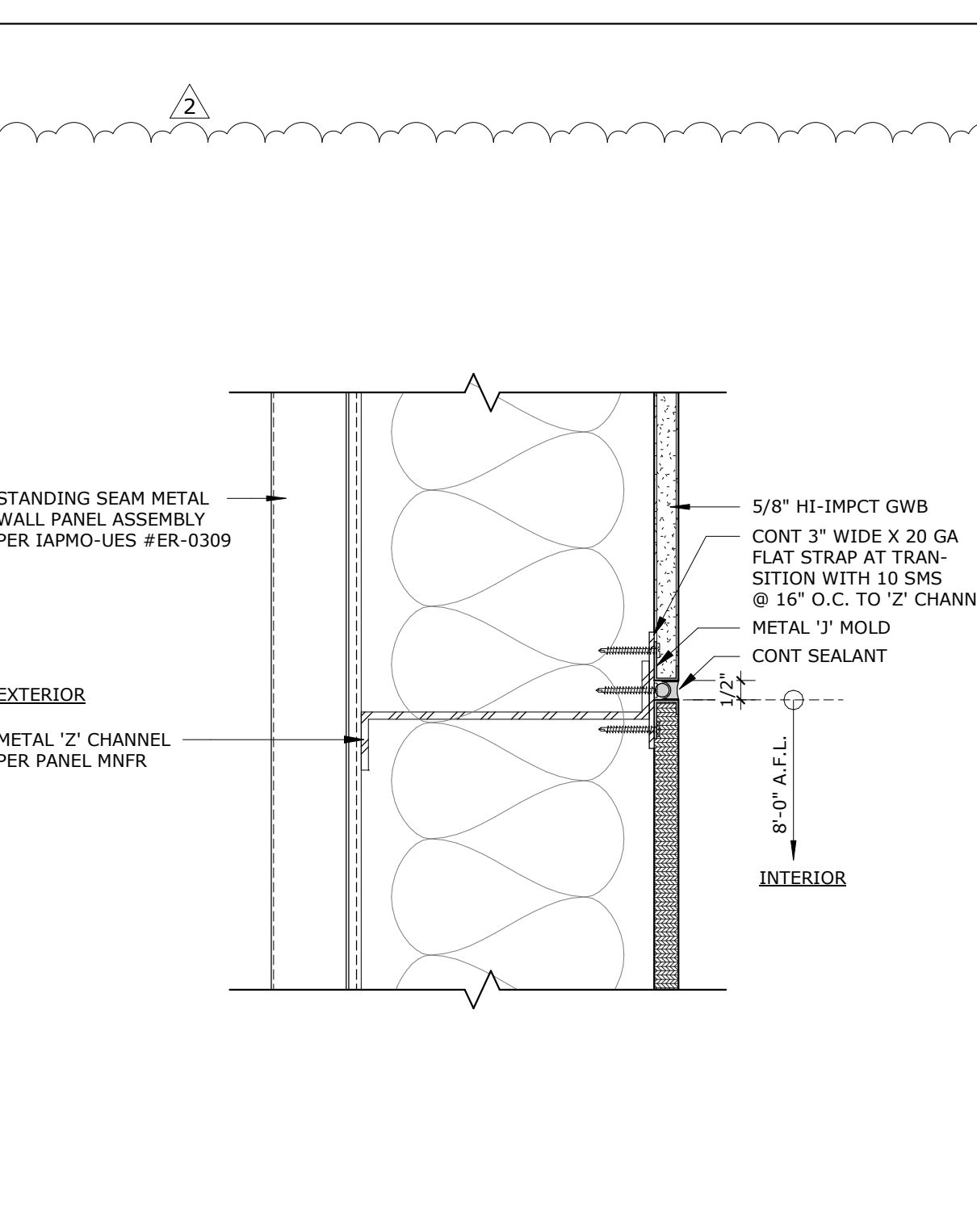
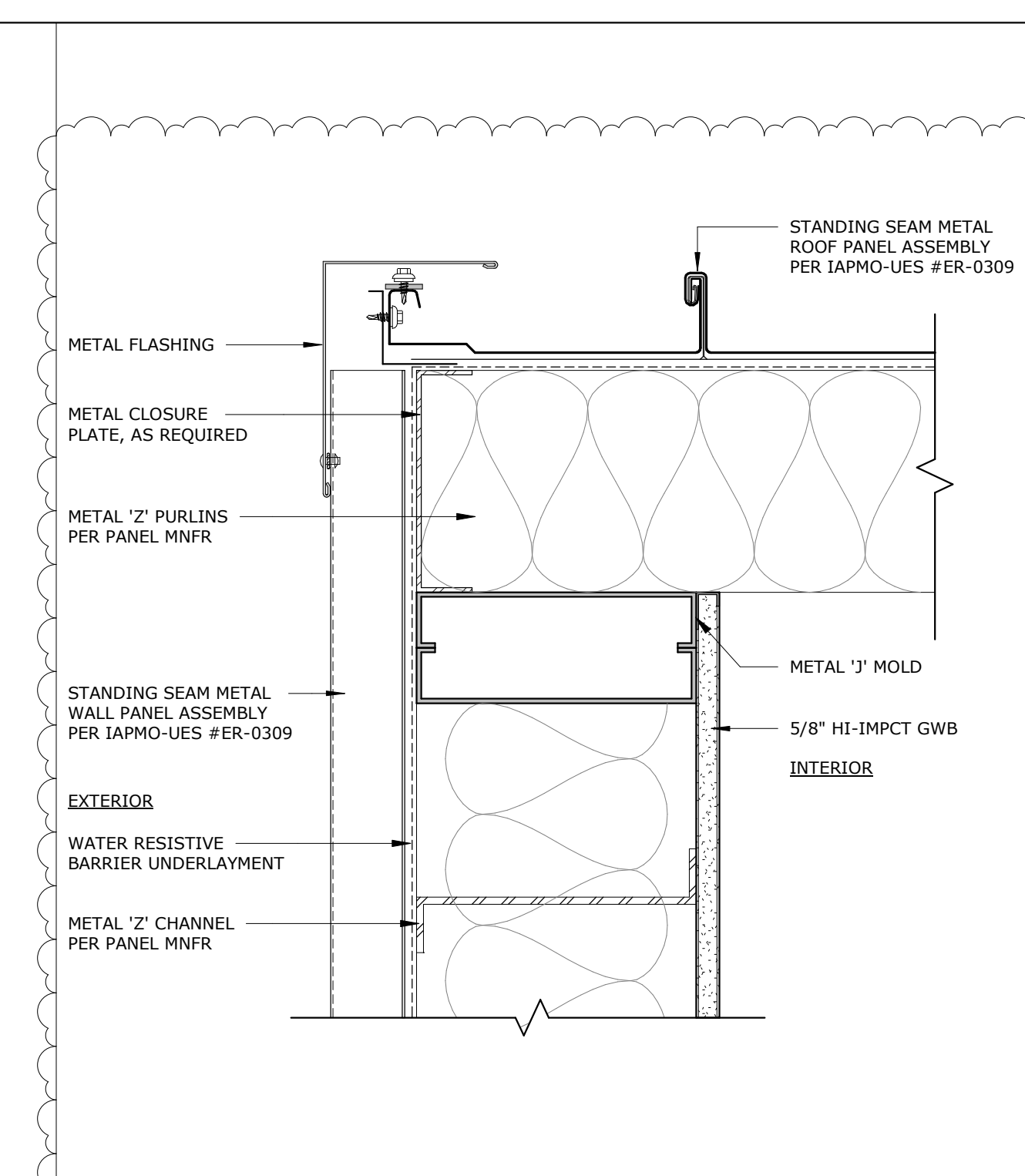
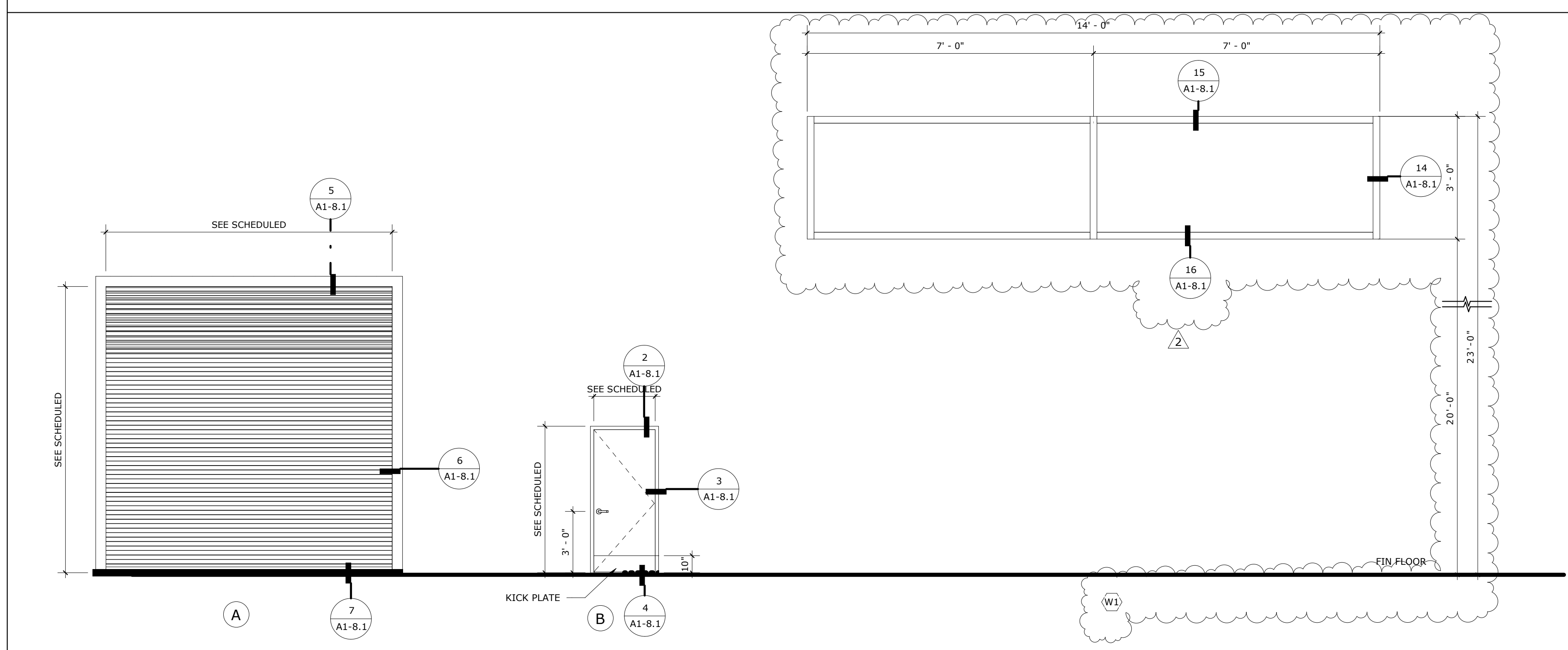
RUHNAU CLARKE ARCHITECTS

GENERAL NOTES

- SEE SHEET 2 FOR HOLLOW METAL FRAME DETAILS
- SEE 9 FOR METAL ROLL UP DOORS
- SET DOORS ADJACENT TO WALLS A MIN. OF 4" AWAY FROM WALL U.N.O.
- ALL GLAZING IN DOORS, AND WINDOWS BELOW 8'-0" A.F.F., ARE TEMPERED OR AS REQUIRED BY SECTION 2406 OF THE 2019 CBC
- ALL EXTERIOR DOORS ARE TO SWING OUT AND OPEN TO A MIN. OF 110 DEGREES FROM ITS CLOSED POSITION WHERE POSSIBLE, U.N.O. EXCEPTION: WHERE TACTILE SIGNAGE IS LOCATED ON HINGE SIDE OF DOOR, DOORS TO HAVE A 90 DEGREE SWING LIMIT
- ALL EXTERIOR DOORS SHALL HAVE A POLYSTYRENE CORE (THERMAL RESISTANCE)
- PROVIDE AIR SEALS/WEATHER STRIPPING AT ALL EXTERIOR DOORS TO CONDITIONED SPACES.
- ALL FLOOR MATERIAL CHANGE SHALL BE LOCATED UNDER THE CENTERLINE OF DOOR WHERE OCCURS, TYP.
- ALL EXTERIOR DOORS SHALL BE OPERABLE FROM THE INTERIOR WITHOUT THE USE OF A KEY OR ANY SPECIAL KNOWLEDGE OR EFFORT. DEAD BOLTS ARE ONLY PERMITTED WHEN OPERABLE WITH A SINGLE EFFORT LEVER TYPE HARDWARE.
- HAND ACTIVATED DOOR OPENING HARDWARE SHALL BE MOUNTED 34"-44" A.F.F. MAX. PER 11B-404.2.7
- ALL DOORS SHALL BE LOCKABLE FROM THE INTERIOR SIDE
- PER CBC 2019 11B-404.2.5, THRESHOLDS SHALL BE 1/2" HIGH MAX., SEE DETAIL 4
- THE BOTTOM 10" OF ALL DOORS EXTENDING THE FULL WIDTH SHALL HAVE A SMOOTH UNINTERRUPTED SURFACE TO ALLOW THE DOOR TO BE OPENED BY A WHEELCHAIR FOOTREST WITHOUT CREATING A TRAP OR HAZARDOUS CONDITION. CBC 2019 11B-404.2.10
- MAXIMUM EFFORT TO OPERATE ALL DOORS SHALL NOT EXCEED 5 LBS. FOR BOTH EXTERIOR AND INTERIOR DOORS. FIRE DOORS SHALL NOT EXCEED 15 LBS. CBC 2019 11B-404.2.9
- THESE FORCES DO NOT APPLY TO THE FORCE REQUIRED TO RETRACT LATCH BOLTS OR DISENGAGE OTHER DEVICES THAT HOLD THE DOOR OR GATE IN A CLOSED POSITION PER CBC 11B-404.2.9
- REFER TO SPECIFICATION SECTION (VERIFY) FOR DOOR HARDWARE INFORMATION

ABBREVIATIONS

ALUM	ALUMINUM
AN	ANODIZED
HM	HOLLOW METAL
HC	HOLLOW CORE
GALV	GALVANIZED
STL	STEEL
PSG	PAINT: SEMI-GLOSS



ALUM WINDOW HEAD 15

ROLLING GATE DETAILS 12

TYPICAL H.M. FRAME ANCHOR 9

ROLL-UP DOOR JAMB 6

HM DOOR JAMB 3

PLYWOOD BOT. END CONN. 19

ALUM WINDOW SILL 16

ALUM WINDOW JAMB 14

CHAINLINK POST FTG 10

ROLL-UP DOOR SILL 7

DOOR THRESHOLD 4

DOOR THRESHOLD 4

CHAIN LINK ROLLING GATE 11

TYP. H.M. FRAME 8

ROLL-UP DOOR HEAD 5

HM DOOR HEAD 2

DOOR THRESHOLD 4

DOOR THRESHOLD 4

DOOR TYPES 1

GWB TOP END CONNECTION 18

PLYWOOD-GWB TRANSITION 17

DOOR THRESHOLD 4

DOOR THRESHOLD 4

DOOR THRESHOLD 4

DOOR THRESHOLD 4

DOOR THRESHOLD 4

DOOR THRESHOLD 4

DOOR THRESHOLD 4

DOOR THRESHOLD 4

DOOR THRESHOLD 4

PROJECT NO. 11-41-51
9/9/2022 2:39:57 PM

ISSUE NO.	DATE	DESCRIPTION	REVISION NO.	DATE	DESCRIPTION

RUHNAUCLARKE.COM

3775 TENTH STREET, REVERSDIE CALIFORNIA 92501 (951) 684-6664 / 2751 PALMER WAY, SUITE C, CALSADA CALIFORNIA 92010 (760) 430-9899

JURUPA UNIFIED SCHOOL DISTRICT STORAGE

10551 Bellegrave Avenue, Jurupa Valley CA 91752

DOOR & WINDOW SCHEDULE/ CMF

A1-8.1