



Fagen Friedman & Fulfroft LLP

Public Hearing Comments in Advance of Preparing Trustee Area Map Options



Jonathan Salt, F3 Law
Christopher Meléndez, Davis Demographics
September 13, 2021

F3law.com

What is the California Voting Rights Act (“CVRA”)?

- Took effect January 1, 2003
- Prohibits the use of “at-large” elections when such an election system:

“impairs the ability of a protected class to elect candidates of its choice or its ability to influence the outcome of an election....”

(Elections Code § 14027.)



Does not require intent

- The CVRA is far broader than its federal counterpart
- Much easier for a plaintiff to bring a claim against a government entity
- Proof of intent on the part of voters or elected officials to discriminate against a protected class is not required
(Elections Code § 14028(d).)



Right to Attorneys' and Expert Fees

CVRA grants a prevailing plaintiff the right to recover reasonable attorneys' fees **AND** expert witness fees.

If district wins, it is **not** granted the same right.

(Elections Code § 14030.).

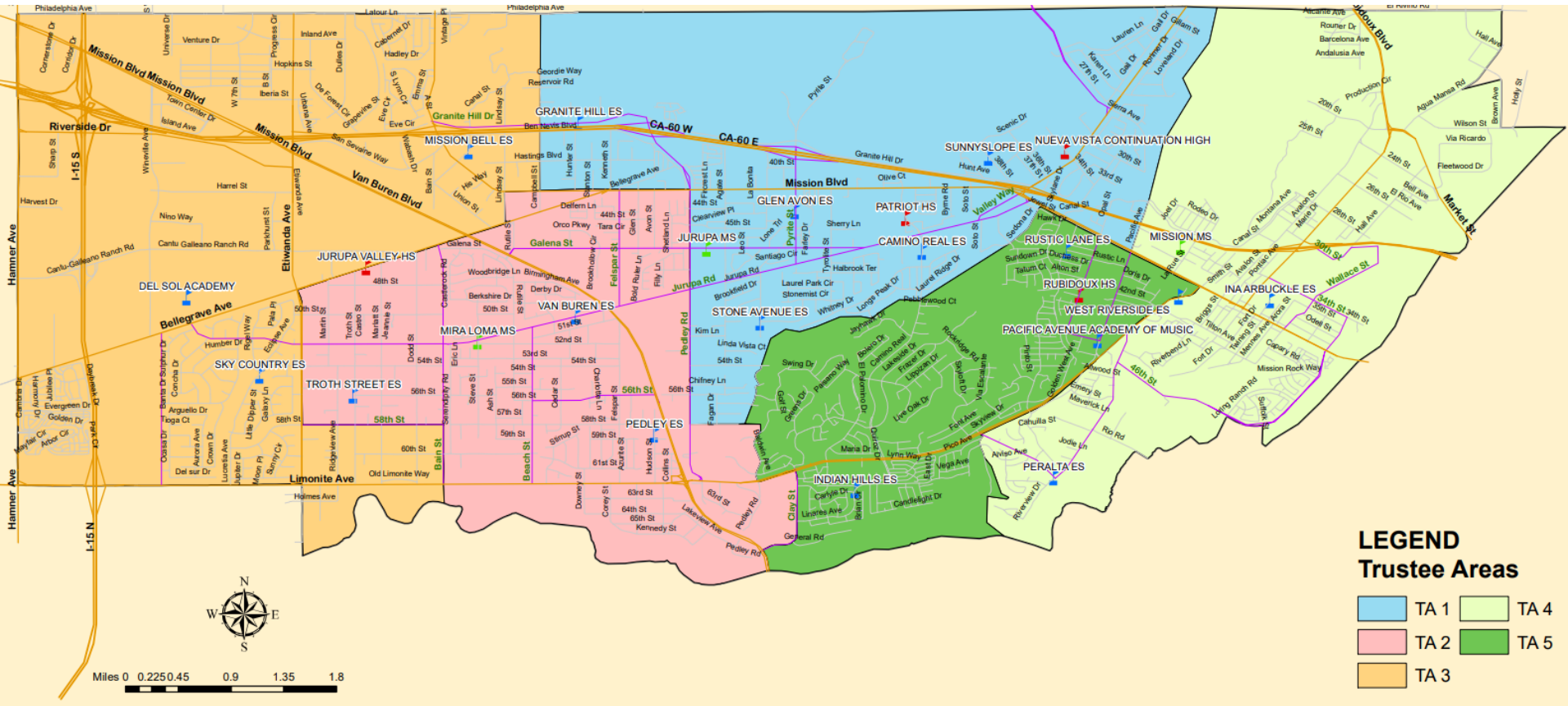


What is a “By-Trustee Area” Election System?

- *Only safe harbor from a CVRA claim*
- School district is divided into trustee areas
- A governing board member is elected from each trustee area
- Board members are elected **by only the registered voters in the particular trustee area** where the governing board member resides



Current Hybrid At-Large Areas



“From” Trustee Areas

Current Step: Two Public Hearings

- Prior to the preparation of draft trustee voting area plans by the District's demographer
- Receive community comments and public testimony concerning:
 - The composition of potential trustee voting areas associated with the District's transition to a by-trustee area election system



District's Demographics

2010 Census Data (Total Population)

2010 Census Population District Wide		
Population	Total	%
Hispanic/Latino	63,429	65.63%
White	25,411	26.29%
Black/ AfricanAmerican	3,499	3.62%
Asian	2,367	2.45%
Two or More Races	1,242	1.29%
American Indian/ Alaska Native	316	0.33%
Native Hawaiian/ Pacific Islander	240	0.25%
Other	141	0.15%
Total	96,645	100%



District's Demographics

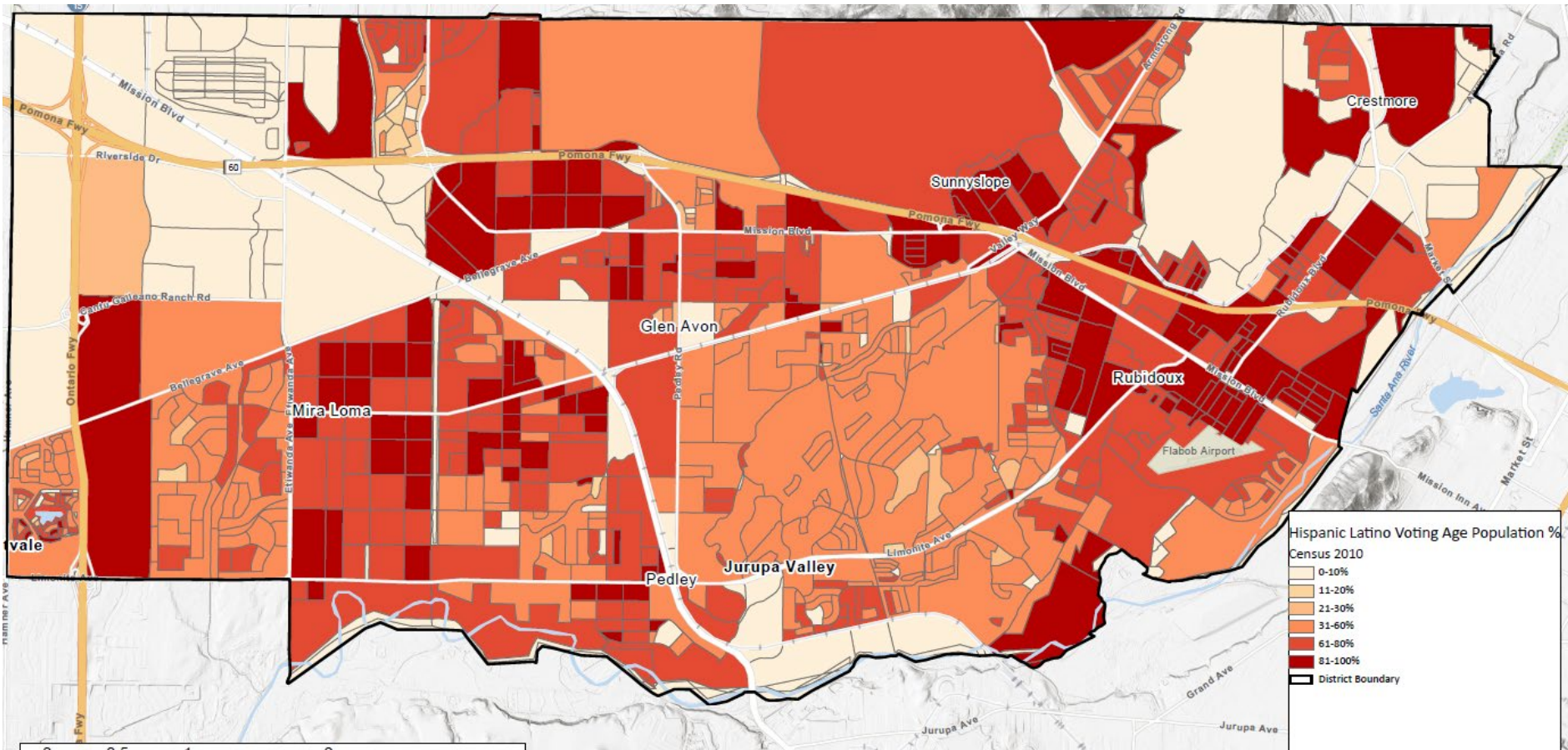
Citizen Voting Age Population Estimates

Voting Age Population District Wide		
Population	2010 Census	
	Total	%
Hispanic /Latino	39,899	59.45%
White	21,263	31.68%
Black / African American	2,731	4.07%
Asian	1,925	2.87%
Two or More Races	754	1.12%
Native Hawaiian/ Pacific Islander	190	0.28%
Other Race Alone	101	0.15%
American Indian/ Alaska Native	247	0.37%
Total	67,110	100%

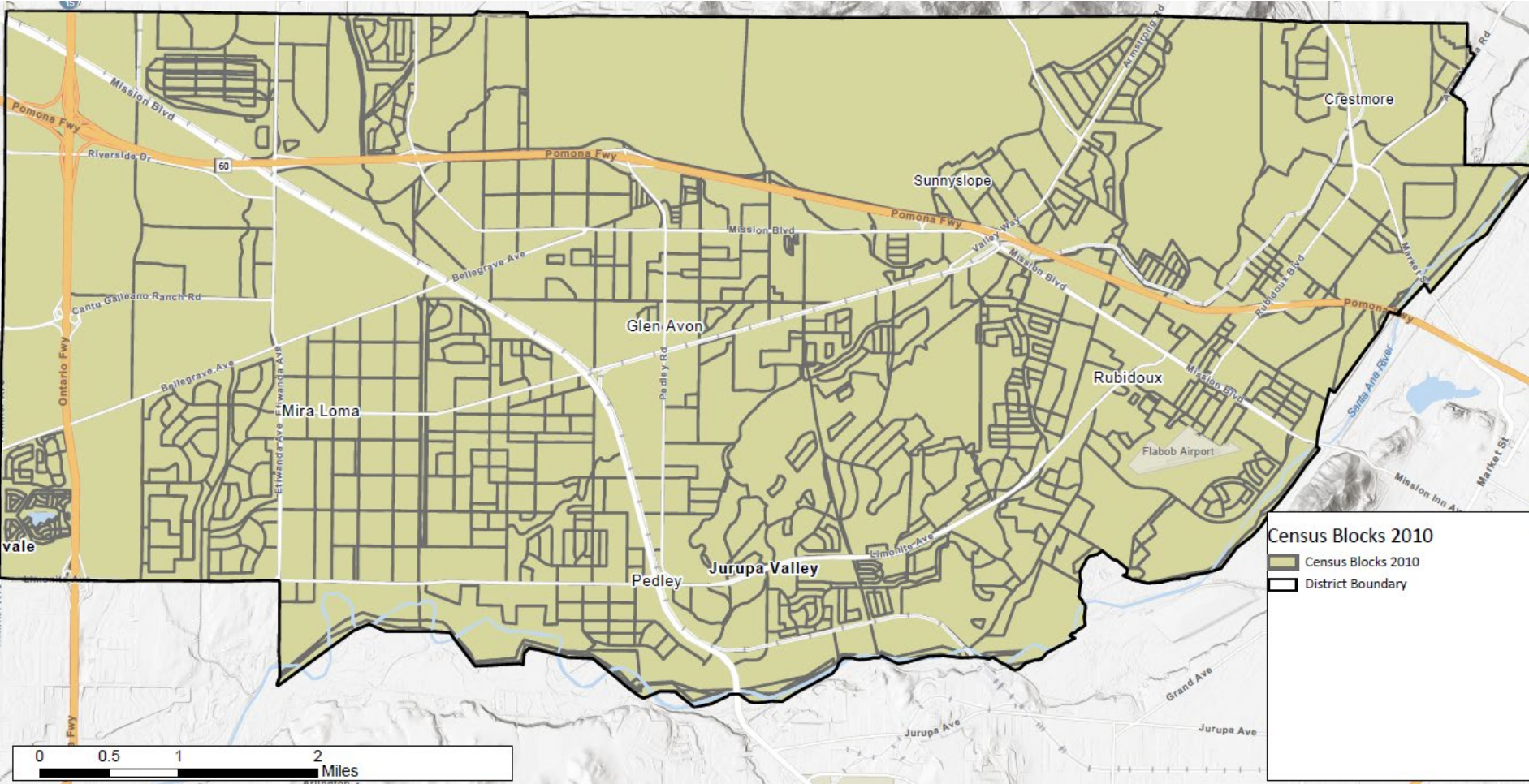
**Total column indicates citizen voting age population.(18 and Over)

District's Demographics

Hispanic Citizen Voting Age Population



How should lines be drawn?



Type of Feedback & Commentary Being Solicited

***“I would like to keep Neighborhood X
and Neighborhood Y in the same trustee
area...”***



Type of Feedback & Commentary Being Solicited

“I think . . .

- Van Buren Boulevard
- Jurupa Road
- Etiwanda Avenue
- Mission Boulevard

***. . . may make sense as a trustee area
boundary because . . .***

- It seems like a natural boundary
- It makes sense geographically



Type of Feedback & Commentary Being Solicited

“I think . . .

- All of ____ community should be in one area
- Each middle school boundary should be in multiple/single areas
- The current hybrid trustee area boundaries should help guide map creation
- Each trustee area should serve multiple school sites

. . . may make sense as a trustee area boundary because . . .

- It keeps communities together
- It provides good/balanced representation



After Pre-Map Public Hearings

- Draw Draft Trustee Area Plans
 - Demographer to use 2020 Census Data and additionally permitted updated data.
 - Population must be as equal “as is practicable” – people, not citizens.
 - Ed Code section 1002: “...trustee areas shall be as nearly equal in population...”
 - A certain amount of deviation may be permitted.



More Criteria for Consideration

Article 21 of the California Constitution:

- Comply with the U.S. Constitution.
- Achieve population equality as nearly as is practicable.
- Comply with the Federal Voting Rights Act.
- Voting districts shall be geographically contiguous.
- Local *communities of interests*.
- Geographical compactness.
- Cannot favor or discriminate against an incumbent, political candidate or political party.



Final Thoughts

- Does not change overall District boundaries
- Does not change school attendance boundaries
- **Does not** change how the District is governed:
 - Each Board member, regardless of the trustee area in which he/she resides, still owes fiduciary duty to entire District
 - Still one District with common goals and challenges!!!



Schedule

September 13, 2021	Pre-Map Public Hearing #1
October 4, 2021	Pre-Map Public Hearing #2
<i>2020 Census Data released; Draft map options prepared for public review</i>	
November 8, 2021	Map Public Hearing #1
November 15, 2021 (Special Meeting)	Map Public Hearing #2
December 13, 2021	Map Public Hearing #3



