

**JURUPA UNIFIED SCHOOL DISTRICT
BOARD OF EDUCATION
REGULAR MEETING**

AGENDA

BOARD OF EDUCATION Sam Knight, President Mary Burns, Clerk David Barnes John Chavez Sandra Ruane
SUPERINTENDENT Benita B. Roberts

MARCH 21, 1994

(NOTE CHANGE OF LOCATION)

RUSTIC LANE ELEMENTARY SCHOOL MULTIPURPOSE ROOM
6420 Rustic Lane, Riverside, CA 7:00 p.m.

OPENING

Call to Order in Public Session

* Indicates supporting document

Roll Call

** Indicates supporting document
for Board Members only

CLOSED SESSION 6:00 P.M.

The Board will meet in Closed Session at **6:00 p.m., Room 10, Teachers' Lounge at Rustic Lane School**, to consider qualified matters of litigation, negotiation, student discipline, and personnel qualifications which are timely.

PUBLIC SESSION 7:00 P.M.

Speaker cards are available on the side table for citizens wishing to address the Board in the communications session. Speakers are requested to limit comments to five minutes.

Call to Order in Public Session

(President Knight)

Roll Call: Mr. Knight, Mrs. Burns, Mr. Barnes, Mr. Chavez, Mrs. Ruane

Flag Salute

(President Knight)

Invocation

(Mr. Chavez)

COMMUNICATIONS SESSION

1. Recognition

a. Welcome to Rustic Lane Elementary School

(Mr. Taylor)

Mr. John Wheeler, principal at Rustic Lane Elementary School, will welcome the Board, staff and community, and briefly comment on current events at the school.

1. Recognition (Cont'd)

b. Recognize 1993/94 Spelling Bee Winners

(Mr. Taylor)

On Thursday, February 3, 1994, the district's Spelling Bee was held at Camino Real Elementary School. After twenty-six rounds, Lynn Corpus, an 8th grade student at Mission Middle School was declared the winner. Layah Calloway, a 7th grade student at Jurupa Middle School was the runner-up. Lynn will represent the district in the 1993/94 County Spelling Bee to be held at Harris' Department Store in Riverside on Friday, March 18, 1994 and Layah will serve as an alternate.

Congratulations to all of the participants in the 1993/94 Spelling Bee. The following students are the winners and alternates who represented their school in the district's Spelling Bee:

<u>Winner</u>	<u>Alternate</u>	<u>School</u>
Clara Lui, 6th grade	Christine Corpus, 5th grade	Camino Real Elementary
Brad Lauritzen, 6th grade	Katherine Jankowski, 6th grade	Glen Avon Elementary
Sara Olazava, 6th grade	Autumn Schofield, 5th grade	Granite Hill Elementary
Julianne Hooson, 6th grade	Vanessa Saldana, 4th grade	Ina Arbuckle Elementary
Brandon Anderson, 6th grade	John Howse, 4th grade	Indian Hills Elementary
Ashlee Graves, 5th grade	Carol Gibbons, 6th grade	Mission Bell Elementary
Laura Sato, 6th grade	Leonardo Rangel, 4th grade	Pacific Avenue Elementary
Nicholas Hong, 6th grade	Richard Dean, 5th grade	Pedley Elementary
Sara Castro, 6th grade	Anna Knott, 6th grade	Rustic Lane Elementary
Amber Umstot, 6th grade	Kristine Halleck, 5th grade	Sky Country Elementary
Christine Didion, 5th grade	Marlaina Garcia, 5th grade	Stone Avenue Elementary
Josette Quinata, 6th grade	Ryan Birks, 4th grade	Sunnyslope Elementary
Blanca Carmona, 6th grade	Kevin Cash, 6th grade	Troth Street Elementary
Henry Martinez, 5th grade	Chris Halling, 5th grade	Van Buren Elementary
Noah Holzknecht, 6th grade	Monique Hernandez, 6th grade	West Riverside Elementary
Layah Calloway, 7th grade	Megan Long, 8th grade	Jurupa Middle School
Lynn Corpus, 8th grade	Sara Caballero, 8th grade	Mission Middle School

Information only.

2. Administrative Reports and Written Communications

a. Accept Donations

(Mr. Edmunds)

All donations are given to Jurupa Unified School District with the request that the money or item be used at the designated school.

Mr. and Mrs. T. Boess of Riverside, wish to donate an Apple II Plus Computer, Vista Printer, and miscellaneous software, with the request it be used at Camino Real Elementary School. The estimated value of this equipment and software is approximately \$750.00.

The Camino Real Elementary School PTA wishes to donate \$3,300.00 with the request it be used toward field trips for students.

2. Administrative Reports and Written Communications (Cont'd)

a. Accept Donations (Cont'd)

Mr. Jim Zirbes, of Phoenix, Arizona, wishes to donate various toys, pencils, and folders with the request they be used in Connie Nagle's classroom at Granite Hill Elementary School. The approximate total value of these items is \$600.00.

The Rustic Lane Elementary School PTA wishes to donate \$1,132.68 with the request it be used to purchase five trees and a portable sound system for the school.

Ms. Johanna Downs wishes to donate \$40.00 with the request it be used to purchase instructional supplies for her classroom at Troth Street Elementary School.

The Jurupa Valley FFA AG Support Group wishes to donate an office trailer, with the request it be used in the Ag Department and FFA Program at the school. The approximate value of the office trailer is \$400.

Mr. and Mrs. Randy Stockberger, of Riverside, wish to donate three new uniform racks and one new equipment dolly cart, with the request they be used exclusively by the Jurupa Valley High School "Silver Brigade Band Program". The approximate value of the combined items is \$950.00.

Betz & Jones Co., of Riverside, wishes to donate two five-gallon shade trees, with the request they be given to the Environmental Club for planting at Rubidoux High School. The approximate total value of the trees is \$19.98.

Administration recommends acceptance of these donations with letters of appreciation to be sent.

b. Written Communications and Administrative Reports

(Mrs. Roberts)

3. Report of Student Representatives

The Board welcomes Jennifer Strona, Jurupa Valley High School Student Representative, and Christina Reyes, Rubidoux High School Student Representative. They may wish to address the Board regarding student achievements, interests, or other matters.

4. Public Verbal Comments

This communication opportunity is included on the agenda of each regular Board meeting so citizens can make suggestions or identify concerns about matters affecting the school district, or request an item on a future agenda. **California law states that there shall be no action on items not shown on the published Board agenda.**

The Board President will call on speakers who have completed cards requesting to be heard. Comments should be limited to five minutes. The Board may not have complete information available to answer questions and may refer specific concerns to the staff for appropriate attention.

5. Board Member Reports and Comments

Individual Board members may wish to share information about topics not on the agenda, report on committee activities or request items on a future agenda.

HEARING SESSION

Hold Public Hearing on Increasing School Facilities Fees

(Mr. Edmunds)

In January, 1994, the State Allocation Board authorized an inflation increase in school facilities fees levied pursuant to Government Code Section 53080, of seven cents per square foot on new residential construction, and 1¢ per square foot on new commercial/industrial construction. Our current school facilities fees are \$1.65 per square foot for residential, and 27¢ per square foot for commercial/industrial.

District enrollment is continuing to increase substantially each year, which creates a continuing need for construction of new school facilities. The District is almost totally reliant on State funding to provide new school facilities, and has received approximately \$90 million in State funds over the past eight years. As a "Match" requirement for State construction funds, the District must collect and remit to the State the maximum fee allowed pursuant to Government Code Section 53080, assuming that this fee bears a reasonable relationship to the need for new facilities.

Mr. Rob Corley, a school facilities consultant, prepared a Justification Report for School Facility Fees in May of 1989, which substantiated the continuing need to assess school facility fees in the maximum allowable amount. In fact, this report shows that a fee of over \$5.00 per square foot of new residential construction would be required to fund the cost of housing new students generated by additional housing units. Based upon an updated analysis of Mr. Corley's findings, the Board has adopted a mitigation fee of \$8,523 per dwelling unit. This fee equates to about \$5.33 per square foot of new residential construction. It should be noted that this amount mitigates about 70% of the full impact of new development on school facilities, as it provides for expansion only of secondary facilities.

The purpose of this public hearing is to receive input and testimony on levying school facilities fees as proposed in Resolution No. 94/24, which would adjust the fee from \$1.65 to \$1.72 per square foot for new residential construction, and from 27¢ to 28¢ per square foot for new commercial/industrial construction. Resolution No. 94/25 is an urgency resolution which would put the fee increase into effect immediately so that revenue is not lost during the 60-day period required for the permanent fee increase to go into effect.

President Sam D. Knight, Sr., should formally open and close the public hearing on this matter. The Board will consider action on the Resolution under Item F. Adopt Resolution Nos. 94/24 and 94/25 Establishing School Facilities Fees for New Construction.

ACTION SESSION

* **A. Approve Minutes of the March 7, 1994 Regular Meeting**

Recommend approval as printed.

* **B. Hear Report on Spring, 1993 California Learning Assessment System, Grades 4, 8 & 10**
(Dr. Lenertz)

The Jurupa Unified School District has received the 1992-93 results from the new California Learning Assessment System (CLAS). For the 1992-93 school year, the percentage of students producing work at each performance level by grade and subject is reported for the state, the district, each school, and 100 districts and schools with similar demographics. The performance levels range from 1, the lowest level, which describes performances that provide little or no evidence of understanding or achievement, to 6, the highest level, which describes exemplary student work.

PERFORMANCE LEVELS

	Mathematics	Reading	Writing
High 5-6	Solid to rigorous mathematical thinking	Insightful understanding of the text	Creative response
4	Substantial mathematical thinking	Thoughtful understanding of the text	Responds to writing task
3	Partial mathematical thinking	General understanding of the text	Responds to writing task inconsistently
1-2 Low	Limited mathematical thinking	Understands individual words or phrases	Partial response to writing task

Chart 1 in the supporting documents is a graph depicting the percentage of fourth grade students in the district, in 100 similar districts, and in the state who achieved at each performance level. Charts 2 and 3 provide the same information for the eighth and tenth grades respectively.

Chart 4 serves as a legend to explain how similar schools and districts may be compared to one another using lower, higher and similar ratings.

Chart 5 presents the 1993 CLAS results for grades 4, 8 and 10 for each school. Results are presented with the percent of students scoring at levels 1-2, 3, 4, and 5-6 in the area of reading, writing, and mathematics. Also included in the chart is whether the percentage of Jurupa Unified School District students scoring 4-6 is **higher, similar to, or lower** than that of students in 100 districts/schools with similar background characteristics.

* **B. Hear Report on Spring, 1993 California Learning Assessment System, Grades 4, 8 & 10**
(Cont'd)

Chart 6 presents data by each performance level for grades 4, 8 and 10 in **reading** for each Jurupa Unified School District school and for its comparison group of 100 similar schools.

Chart 7 presents data by each performance levels for grades 4, 8 and 10 in **writing** for each Jurupa Unified School District school and for its comparison group of 100 similar schools.

Chart 8 presents data by each performance levels for grades 4, 8 and 10 in **mathematics** for each Jurupa Unified School District school and for its comparison group of 100 similar schools.

Only a random sample of student papers were scored at each of the grade levels, ranging from 25 to 100 percent.

Jurupa students at all grade levels when compared to neighboring districts scored consistently higher in **writing**.

Highlights of the results follow:

Fourth Grade

- Twenty-eight (28%) percent of Jurupa students performed at levels 4-6 in reading compared to 30 percent statewide.
- The percent of students performing at levels 4-6 in reading was 2 percent lower than the percent for 100 similar districts.
- Thirty-six (36%) percent of Jurupa students performed at levels 4-6 in writing compared to 44 percent statewide.
- The percent of students performing at levels 4-6 in writing was 7 percent lower than the percent for 100 similar districts.
- Six (6%) percent of Jurupa students performed at levels 4-6 in mathematics compared to 7 percent statewide.
- The percent of students performing at levels 4-6 in mathematics was similar to the percent for 100 similar districts.

Eighth Grade

- Thirty-three (33%) percent of Jurupa students performed at levels 4-6 in reading compared to 39 percent statewide.
- The percent of students performing at levels 4-6 in reading was 4 percent lower than the percent for 100 similar districts.

* **B. Hear Report on Spring, 1993 California Learning Assessment System, Grades 4, 8 & 10**
(Cont'd)

Eighth Grade (Cont'd)

- Forty-nine (49%) percent of Jurupa students performed at levels 4-6 in writing compared to 42 percent statewide.
- The percent of students performing at levels 4-6 in writing was 9 percent higher than the percent for 100 similar districts.
- Six (6%) percent of Jurupa students performed at levels 4-6 in mathematics compared to 11 percent statewide.
- The percent of students performing at levels 4-6 in mathematics was 2 percent lower than the percent for 100 similar districts.

Tenth Grade

- Sixteen (16%) percent of Jurupa students performed at levels 4-6 in reading compared to 26 percent statewide.
- The percent of students performing at levels 4-6 in reading was 9 percent lower than the percent for 100 similar districts.
- Thirty-eight (38%) of Jurupa students performed at levels 4-6 in writing compared to 42 percent statewide.
- The percent of students performing at levels 4-6 in writing was 3 percent lower than the percent for 100 similar districts.
- Five (5%) percent of Jurupa students performed at levels 4-6 in mathematics compared to 9 percent statewide.
- The percent of students performing at levels 4-6 in mathematics was 3 percent lower than the percent for 100 similar districts.

School staffs are currently analyzing the CLAS scoring information. Part of this process will include reviewing the California state frameworks to determine how closely the curriculum and instruction is aligned to the concepts presented in the frameworks. Through the planning process, staffs will be working to establish educational priorities to meet the needs of their diverse student populations.

* **C. Approve at First Informational Reading Policy 5117.1. Intradistrict Open Enrollment**
(Mrs. Roberts/Mr. Taylor)

Board members will recall that in July, 1993, the Governor signed two bills into law related to school choice: AB 1114 (Alpert) which creates intradistrict choice provisions and AB 19 (Quankenbush), which adds another mechanism to previously existing interdistrict attendance alternatives.

In October, Governor Wilson signed AB 1310 which makes some minor technical changes to the two earlier signed bills. The intradistrict choice bill requires that Boards adopt policies to implement this legislation by July 1, 1994. Therefore, the staff has analyzed the bill and used a March 1994 advisory from the State Department of Education in drafting a proposed policy on intradistrict choice so that parents in the Jurupa Unified School District will have an opportunity to enroll their children in a school of their choice in the fall of 1994.

Since the legislation recognizes that eliminating current district boundaries would not be practical, choice is therefore limited to spaces available after children who reside in the designated attendance area are housed. In addition, transportation to sites outside of the attendance area of residence is not mandated and because of the continuing fiscal crisis in the district this option is not a part of the proposed policy. The proposed policy also includes provision for notification to parents of their choice options twice during the school year and allows for transfers to other schools throughout the year based on space available and at the discretion of the district.

Administration recommends that the Board approve at first informational reading the school choice policy 5117.1. Intradistrict Open Enrollment.

** **D. Approve Issuance of 1992/93 School Accountability Report Cards** (Dr. Lenertz)

Proposition 98, approved by the voters in November, 1988, has two major provisions. The first deals with the allocation of the state's fiscal resources to schools, and the second requires that local boards of education issue annual School Accountability Report Cards (SARC's) for every school in the district. This is the fifth year of implementation of the School Accountability Report Cards. The data in these reports primarily reflects the 1992/93 school year.

Every report card must contain information about current school conditions in the following fourteen areas: 1.) student achievement; 2.) student attendance; 3.) expenditures & services; 4.) class size; 5.) teacher assignments; 6.) textbooks & materials; 7.) counseling & student support services; 8.) substitute teachers; 9.) school facilities & safety; 10.) teacher evaluation; 11.) discipline & climate for learning; 12.) training & curriculum improvement; 13.) quality of instruction & leadership, and 14.) student preparation to enter work force. The latter area was added by the legislature in 1994. It should be noted that some schools elected to add sections related to their mission and goals, as well as a section on their demographic characteristics.

An accountability report card for each school has been presented to Board members for their review.

Administration recommends that the Board authorize the issuance of the 1992/93 School Accountability Report Cards.

* **E. Certification of Second Period Interim Report**

(Mr. Edmunds)

Since January of 1986, State legislation has required the District to prepare and submit to the County Office of Education First and Second Interim Reports of the financial condition of the District. The Business Office analyzes and projects revenue and expenditures for the year, and prepares the certification that the District will be able to meet its financial obligations. AB 1200 added the requirement for certification of the ability to meet financial obligations for two subsequent fiscal years as well.

The Second Interim Report is now due and is included in the supporting documents along with an Excess Fund Resolution which will revise the Budget based on the most recent revenue projections. The purpose of the Second Interim Report is to provide updated budget projections based upon the most current information available. These updated projections are compared to the operating budget and the differences appear in Column E of the Interim Report documents. Several revisions are incorporated in the Second Interim Report. The most significant are as follows:

Revenue Adjustments:

1. The Revenue Limit sources have been increased by \$231,406
2. Local Revenue has been increased by \$119,404 due to additional revenue from the Pregnant Minor Program (\$82,765), and the rebate from Southern California Gas Company (\$36,639)

Expenditures:

1. Expenditures have been reduced by \$100,656 due to adjustments in the Golden Handshake Program, Medicare costs, and the PERS rate

As a result of these and other minor adjustments, the Unrestricted Reserve is projected to increase by \$473,251 to a total of \$2,717,342. It should be emphasized that the projected year end totals presented here have already been incorporated in the assumptions for the 1994/95 Budget, and do not represent an increase that will affect that projection.

Based upon this information, the Second Interim Report indicates that the District will be able to meet its financial obligations for the current fiscal year. For subsequent fiscal years it is assumed that the District will have the ability to balance its Budget as it has in the past.

Administration recommends the Board certify that the District will be able to meet its financial obligations for the 1993/94 and two subsequent fiscal years.

* **F. Consider Adoption of Resolution Nos. 94/24 and 94/25. Establishing School Facilities Fees for New Construction**

(Mr. Edmunds)

The District currently assesses a school facilities fee in the amount of \$1.65 per square foot on new residential construction and 27¢ for commercial/industrial. In January, 1994, the State Allocation Board authorized an inflation increase in school facilities fees to \$1.72 per square foot for new residential construction and 28¢ per square foot for commercial/industrial construction.

* **F. Consider Adoption of Resolution Nos. 94/24 and 94/25, Establishing School Facilities Fees for New Construction** (Cont'd)

Since the District participates heavily in the State School Building Program and is required to provide local matching funds in the amount of the maximum school facility fee allowable under Government Code Section 53080, we need to increase our school facilities fees to the maximum amount authorized by the State Allocation Board.

In May of 1989, we retained the services of a consultant, Rob Corley, to prepare a Report of Findings concerning the reasonableness of our fee, and its relationship to the needs of the community and the needs for new school construction. Administration has subsequently analyzed and updated the information in Mr. Corley's report to substantiate the continuing need for school facility fees. This information is available for public inspection in the office of the Assistant Superintendent Business Services. Both the Justification Report for School Facility Fees prepared by Mr. Corley, and recent analysis performed by administration demonstrates that a fee exceeding \$5.00 per square foot of new residential construction can be documented. Therefore, the proposed fee increase bears a reasonable relationship to the need for new school construction. The fee increase will go into effect sixty days after Board adoption.

The fee established by Resolution No. 94/24 cannot become effective until 60 days after its adoption. To insure that the District does not lose any revenues during this 60-day period, Resolution No. 94/25 has been prepared as an urgency measure to authorize immediate collection of the fee. Because urgency measures are only valid for a 30-day period, a second Resolution, No. 94/26 will be presented to the Board for adoption at the April 4 Board Meeting. When Resolution No. 94/26 expires on Thursday, May 19, 1994, the new fee will be implemented on a permanent basis.

Administration recommends the Board adopt Resolution Nos. 94s/24 and 94/25, Establishing School Facilities Fees for New Construction.

* **G. Adopt Resolution No. 94/28 "Authorizing School Building Project Cost and Allowable Area Standards"** (Mr. Edmunds)

As a requirement of participation in the State Building Program, the Office of Local Assistance requires the Board to adopt a resolution indicating that any building projects applied for will not exceed cost and area standards established by the State. Any excess will be deducted from allowable building areas on subsequent applications. In the past, our architect made this certification; it is a new requirement that school district boards adopt the resolution.

Resolution No. 94/28 is for school building project cost and allowable area standards for Peralta Elementary School; one portable at Rustic Lane Elementary School; two portables at Ina Arbuckle Elementary School; and three portables at Van Buren Elementary School.

Administration recommends the Board approve Resolution No. 94/28, "Authorizing School Building Project Cost and Allowable Area Standards."

H. Review and Act on Timely School Facility Matters

- * 1. Approve Change Order #1 for Mission Bell Elementary School Modernization (Mr. Edmunds)

Change Order #1 for Mission Bell School Modernization, in the amount of \$286.24, with a time extension of 78 days, is for the following:

Ceiling in the kitchen; pendant light fixture mounting; alteration to welding on beam at Building "B"; alteration to roof curb for mechanical equipment; asbestos abatement; seismic bracing of pendant light fixtures; and time extension. Funding for this Change Order should come from the State School Building Program.

Administration recommends the Board approve Change Order #1 on Legal Bid #93/05L for Mission Bell School Modernization in the amount of \$286.24, with a time extension of 78 days.

- 2. Hear and or Approve Other School Facility Matters (Mrs. Roberts)

Due to frequent changes taking place in facility improvement programs, items which require Board discussion or action may arise between agenda preparation and meeting times. Administration may provide such items as verbal information reports or recommendations for action.

I. Act on Student Discipline Matters (Dr. Hendrick)

- ** The Administrative Hearing Panel recommends the expulsion of the pupil in Discipline Case #94/57 for violation of Education Code 48900 (a, i & k).

J. Act on Personnel Matters (Mr. Campbell)

- * 1. Approve Personnel Report #16

Administration recommends approval of Personnel Report #16 as printed subject to corrections and changes resulting from review in Closed Session.

- * 2. Certify Compliance with Regulation Regarding Temporary Athletic Team Coaches

Assurances have been received from the athletic directors at Rubidoux High School and Jurupa Valley High School that their temporary athletic team coaches have met the required standards of competency for 1993/94 certification as detailed in Title V, Section 5593. Copies of those assurances are included in the supporting documents, as is Section 5593. Verification of qualifications and competencies is routinely done each year. The final step in the process (Section 5594) is for the Board to notify the state that these requirements have been satisfied. The Board should act to formally certify to the State Board of Education that the provisions of Section 5593 have been met.

- 3. Direct Issuance of Reemployment Notices to Regular Certificated Employees

It is recommended that the Board direct administration to issue Offer and Notices of Reemployment to regular certificated employees, excluding adult education teachers, teachers on extra compensation assignments, substitute teachers, the superintendent, the assistant superintendents, certificated directors, temporary personnel, intern teachers, personnel on the reduced workload program, probationary personnel not reelected for continued employment, personnel who have resigned, personnel who have received layoff notices, and any certificated employee on suspended status.

K. Approve Routine Action Items by Consent

Administration recommends the Board approve Routine Action Items K 1-8 as printed.

- * 1. Purchase Orders (Mrs. Reul)
- * 2. Disbursements (Mrs. Reul)
- * 3. Agreements (Mr. Edmunds)
- * 4. Payroll Monthly Compensation Report (Mrs. Reul)
- * 5. Resolution #94/27, for Expenditure of Excess Funds (Mrs. Reul)

Throughout the school year, the Business Office monitors and adjusts the District's various budgets with respect to both revenue and expenditures. Changes in revenue result from grant applications, increased funding, adjustments to ADA, apportionment reductions, etc.

The method by which the revenue side of the budget is adjusted is to adopt a Resolution for Expenditure of Excess Funds. In this action the Board approves adding revenue to the budget for various purposes. Since the last budget revision on January 3, 1994, the District has received revenue adjustments in the amount of \$920,057, as identified below. Of this total \$460,839 is unrestricted and will increase the Reserve for Economic Uncertainties. The balance remaining, \$459,218, is restricted in its use and offsetting expenditures are budgeted in these funds.

UNRESTRICTED

♦ <u>General Fund - Fund 100</u>	
Revenue Limit (1992/93 Adjustment)	322,589
Revenue Limit (1993/94 Adjustment)	19,346
Pregnant Minor Program	82,265
Miscellaneous Income (Southern California Gas Abatement)	36,639
	<hr/>
Total Fund 100	460,839
Unrestricted Total	\$460,839

RESTRICTED

♦ <u>Special Projects Fund - Fund 101</u>	
Staff Development	6,097
Mentor Teacher	190,749
Head Start	241,139
Tobacco Use Prevention Education (TUPE)	(11,830)
Funds for Improvement of Post Secondary Education (FIPSE)	16,400
	<hr/>
Total Fund 101	442,555

K. Approve Routine Action Items by Consent

* 5. Resolution #94/27, for Expenditure of Excess Funds (Cont'd)

♦ <u>Special Education Fund - Fund 102</u>	
Revenue Limit	(110,529)
P.L. 94-142	18,739
Special Education Master Plan	44,211
Maximized Funding (1992/93 Adjustment)	(81)
Total Fund 102	<hr/> (47,660)
♦ <u>Redevelopment Fund - Fund 118</u>	
Redevelopment Pass Thru	69,515
♦ <u>Adult Education Fund - Fund 800</u>	
Adult Education P.L. 100-297 Grant (English as a Secondary Language)	8,940
Adult Education Block Grant	(14,132)
Total Fund 800	<hr/> (5,192)
Restricted Total	\$459,218
GRAND TOTAL	\$920,057

Administration recommends that the Board adopt Resolution #94/27, for Expenditure of Excess Funds.

6. Rejection of Claim (Mr. Edmunds)

On February 25, 1994, administration received a claim against Jurupa Unified School District on behalf of Billy Howard, a minor. The claim alleges injury while playing at school. Administration recommends rejection of the claim, with appropriate notice to the district insurance carrier. (A copy of the claim is available for Board review.)

* 7. Non-Routine Field Trip Request from Jurupa Valley High School (Mr. Taylor)

Mr. Gary Hanson, Guidance Coordinator at Jurupa Valley High School, is requesting permission to travel to Santa Clara, CA with five (5) students on Wednesday, April 6 through Sunday, April 10, 1994 to participate in the Tenth Annual California Youth Alcohol and Drug Prevention Conference. Supervision will be provided by staff members and transportation will be by air travel. All costs will be paid through the Drug Alcohol Tobacco Education grant. Administration has indicated that students will not be denied the opportunity to attend the activity due to lack of funds.

It is recommended that the Board approve the Non-Routine Field Trip Request from Mr. Gary Hanson, Jurupa Valley High School, to travel to Santa Clara, CA on Wednesday, April 6 through Sunday, April 10, 1994 with five students to participate in the Tenth Annual California Youth Alcohol and Drug Prevention Conference

K. Approve Routine Action Items by Consent (Cont'd)

- * 8. Non-Routine Field Trip Request from Jurupa Valley High School (Mr. Taylor)

Mr. Aaron Works, Music Director at Jurupa Valley High School, is requesting permission to travel to Tulare, CA on Friday, May 6 through Sunday, May 8, 1994 with approximately twenty-eight (28) students. The purpose of this trip is to participate in the 7th annual Tulare Union High School Drum Fest. Supervision will be provided by staff members and parent volunteers, transportation will be by district vehicle and lodging will be at Motel 6. Administration has indicated that students will not be denied the opportunity to attend the activity due to lack of funds.

It is recommended that the Board approve the request for a Non-Routine Field Trip Request by Mr. Aaron Works, Jurupa Valley High School, to travel to Tulare, CA on Friday, May 6 through Sunday, May 8, 1994 with twenty-eight students to participate in the annual Tulare Union High School Drum Fest.

L. Review Routine Information Reports

1. Staff Development Days (Mr. Taylor)

Following are staff development days that have been scheduled:

Staff Development Days

<u>Students not in Attendance</u>	<u>School</u>	<u>Location</u>
March 21	Granite Hill Elementary	same
March 28	Jurupa Valley High	same
April 18	Van Buren Elementary	same
April 19	Van Buren Elementary	same

- * 2. 1994 Graduation and Promotion Exercises (Mrs. Roberts)

The supporting documents include the 1994 Graduation and Promotion Exercises chart. Board members should determine their participation at the school sites.

- * 3. Financial Report for Cafeteria Fund, Period Ending December 31, 1994 (Mrs. Reul)

- * 4. Review Unadopted Minutes of District Bilingual Advisory Committee Meeting #2 (Mr. Taylor)

The unadopted minutes of the second meeting of the District Bilingual Advisory Committee for the Consolidated Application are included in the supporting documents for review. Information only.

- ** 5. Receive Reports Pursuant to Education Code #48915 (Dr. Hendrick)

Education Code #48915 requires that when a school principal determines that expulsion is inappropriate for specific student discipline violations, the principal will report in writing to the Governing Board. Such reports are included in the supporting documents for Board members only. Information only.

ADJOURNMENT

**JURUPA UNIFIED SCHOOL DISTRICT
RIVERSIDE, CALIFORNIA**

**MINUTES OF THE REGULAR MEETING
MARCH 7, 1994**

OPENING

CALL TO ORDER The Regular Meeting of the Jurupa Unified School District Board of Education was called to order by President Sam Knight at 7:20 p.m. on Monday, March 7, 1994, in the Education Center Board Room, 3924 Riverview Drive, Riverside, California.

Members of the Board present were:

ROLL CALL **Mr. Sam Knight, President**
 Mrs. Mary Burns, Clerk
 Mr. David Barnes, Member
 Mr. John Chavez, Member
 Mrs. Sandra Ruane, Member

Staff Advisers present were:

STAFF PRESENT **Mrs. Benita Roberts, Superintendent**
 Mr. Jim Taylor, Assistant Superintendent Education Services
 Mr. Rollin Edmunds, Assistant Superintendent Business Services
 Mr. Kent Campbell, Assistant Superintendent Personnel Services
 Dr. Linda, Director of Curriculum & Categorical Projects
 Dr. Bill Hendrick, Administrator of Education Support Services

FLAG SALUTE President of the Board Sam Knight led the pledge of allegiance to the flag of the United States of America.

**INSPIRATIONAL
COMMENTS** President Knight called for a moment of silent prayer in memory of Thomas Reul, husband of Barbara Ruel, who recently passed away.

COMMUNICATIONS SESSION

**RECOGNIZE JURUPA
VALLEY HIGH'S
GOLDEN BELL AWARD** The Assistant Superintendent Education Services introduced Ms. Leslie DeMersseman, president of the Palm Springs Board of Education and Director of CSBA Region 18 representing Riverside and Imperial counties.

Ms. DeMersseman stated that it was a pleasure to present CSBA's second place Golden Bell Award to the Jurupa Valley High School Agriculture Department and its head, Mr. Gary Lesh, for devotion to outstanding curriculum and excellent performance. The growth of the program has been phenomenal, increasing from 90 to 300 students. The program continues to meet the needs of many kinds of students including those who are college bound and those who are at risk. She thanked Mr. Lesh and principal Alan Young for emphasizing excellence in academics for students who participate. Congratulations were expressed to the students and staff who have worked so diligently to receive the Golden Bell Award.

RECOGNIZE JURUPA
VALLEY HIGH'S
GOLDEN BELL AWARD
(Cont'd)

Mr. Lesh and Mr. Young expressed appreciation for the award on behalf of the students in the Agriculture Department. President Knight thanked both staff members of Jurupa Valley High School for a tremendous job on behalf of the community and more importantly its youth.

RECOGNIZE 1993
UNITED WAY
CHAIRMAN

The Superintendent announced that the March 21 Board meeting will be held at Rustic Lane Elementary School. She recognized Mr. John Wheeler, who is in his first year as principal of Rustic Lane School and first year as United Way chairman. Mr. Wheeler was commended for an outstanding job of coordinating a very successful United Way campaign. She noted that these were difficult economic times, but the employees of Jurupa District consistently demonstrate their support for the plight of others.

Agencies working in the Jurupa community and directly impacting our students and their families include: the Youth Service Center, which provides counselors on every elementary campus at least one day per week; Family Services which has a child care center on 42nd Street; and the Jurupa Family YMCA which provides many programs for children and adults. The Superintendent announced that the Jurupa District was one of the top four contributors among educational institutions in this area including colleges and universities. She expressed appreciation to Mr. Wheeler and the classified and certificated employees of the district for their support of important health and human care service agencies in the community. President Knight thanked everyone who contributed to the United Way Campaign in support of the community.

ACCEPT DONATIONS
-Motion #189

MRS. RUANE MOVED THE BOARD APPROVE THE FOLLOWING DONATIONS WITH LETTERS OF APPRECIATION TO BE SENT: 106 POUNDS OF POSTERBOARD FROM DAVE COPELAND OF RIVERSIDE FOR USE BY THE STAFF AT GRANITE HILL ELEMENTARY SCHOOL; \$238.56 FROM GRANITE HILL SCHOOL PTA FOR SCIENCE BOARDS TO BE USED AT THE SCIENCE FAIR; \$1,779.20 FROM SKY COUNTRY SCHOOL PTA TO PURCHASE PHYSICAL EDUCATION EQUIPMENT; \$3,225.00 FROM SUNNYSLOPE SCHOOL PTA FOR FIELD TRIPS AND STUDENT INCENTIVES; TWO WEBSTER'S NEW ENCYCLOPEDIA DICTIONARIES VALUED AT \$30.00 FROM JAMES CRAIG OF RIVERSIDE TO BE USED AS PRIZES FOR WINNERS OF THE SPELLING BEE AT VAN BUREN SCHOOL. MR. CHAVEZ SECONDED THE MOTION WHICH CARRIED UNANIMOUSLY.

PESTICIDE SPRAYING
IN THE SCHOOL
DISTRICT

The Superintendent noted that at the request of Mrs. Burns, Board members received a copy of Policy 3401, Pesticide Management. She noted that recent articles have appeared in the newspaper about the dumping of dairy wastes in the Mira Loma area which could lead to a greater fly problem. A concern was raised about the spraying of pesticides to rid the community of this problem. The Superintendent stated that the district has a very comprehensive policy and the Assistant Superintendent of Business Services will work with Steve Dickinson, Supervisor of Grounds, to provide adequate notification to residents when the district plans to spray the area.

STATUS OF SCHOOLS
AFTER RAINSTORM

The Superintendent reported that the heavy afternoon rainstorm on March 7, resulted in a number of calls regarding leaking roofs which the district's Maintenance Department will repair as soon as possible. Most school buses were on schedule and there were no reports of incidents from the bus drivers related to the storm.

CHANGE IN LOCATION
FOR MARCH 21 BOARD
MEETING

The Superintendent announced that the March 21 regular board meeting will be held at Rustic Lane Elementary School. Earlier in the school year, President Knight asked that at least four board meetings be held at school sites during 1993/94.

REPORT FROM
RUBIDOUX STUDENT
REPRESENTATIVE

Christina Reyes, Rubidoux High School student representative, made the following report on current events:

ROTC

ROTC participated in the Invitational Drill Meet competition and took the Junior Without Arms Sweepstakes and third place.

FFA

The FFA participated in the National Date Festival February 22-28. Students won several championships and awards.

Sports

Varsity Girls swim team won against Norte Vista last week.

Varsity Softball Tournament is taking place in Corona beginning March 8.

Activities

Blood Drive has been rescheduled to March 28, from 8 a.m. to 1 p.m. at Rubidoux High School.

Academics

Adult Education will offer a SAT preparation course beginning March 22 through June 2. It will be offered on Tuesday and Thursday afternoons from 2:30 to 5:30 p.m.

REPORT FROM JURUPA
VALLEY STUDENT
REPRESENTATIVE

Jennifer Strona, Jurupa Valley High School student representative, made the following report on current events:

Sports

Varsity baseball is competing at the Chino tournament from March 8-16.

Varsity softball is competing at the Corona Tournament from March 8-16.

Boys tennis team has a match scheduled at Elsinore on March 8.

Jurupa Valley hosted the Jaguar Swim Relays last week. The Jaguars finished second.

Golf team is scheduled to play Soboba Springs March 8.

FFA

Future Farmers of America competed at the Indio Date Festival last week and students received several awards. For the second year in a row, Jurupa Valley High won the Sweepstakes Trophy.

Activities

Opening night for the production of West Side Story was March 4 in the theater. The musical will be performed again on March 11 and 12.

Mock Trial competitions were held at the Riverside County Courthouse and Jurupa Valley tied for 11th place overall.

District Science Fair will be held in the gymnasium March 15-17.

Announcement

Starting on March 14, Bellegrave Avenue, in front of Jurupa Valley High, will be closed due to construction of a new sewer line.

PUBLIC VERBAL
COMMENTS

President Knight noted that Public Verbal Comments section was an opportunity for citizens to address the Board.

PROPOSED
REDUCTIONS IN HIGH
SCHOOL GUIDANCE
COORDINATOR
PROGRAM

Vicky Lynn Castillo, teacher at Jurupa Valley High School, stated that over the past three years guidance coordinators have been listed as part of the budget reductions. CTA leadership has reported that the number one priority among teachers is a safe physical environment in classrooms and schools. The coordinators, as well as other employees, were instrumental in creating a safe environment on Jurupa's high school campuses.

Ms. Castillo stated that guidance coordinators were responsible for a variety of duties as follows: monitor attendance; serve on the School Attendance Review Board; serve on student study team; recommendations for special education testing; attend IEP meetings; prepare case histories and present them at hearings; work with county agencies such as probation office, mental health, child protection, etc.; assist with student schedules; notify parents of student progress several times a year; apply and follow-through with discipline measures; supervise hallways during brunch and lunch and at football games and special events; conduct parent conferences with incoming ninth graders; register new students; assist students with information on colleges.

Ms. Castillo noted that guidance coordinators deal with many levels of counseling, discipline, and attendance. They can detect problem areas early and provide assistance to students. If the number of guidance coordinators was reduced, these kinds of services could not be maintained at the current level. She urged the Board to retain the current guidance program at both high schools.

CITIZEN COMMENTS
ON DISCIPLINE
MATTERS

Raul Wilson, Director for MAPA (Mexican-American Political Association for Riverside and San Bernardino counties) stated that he was concerned with the number of expulsions and suspension within the counties' education system, and school districts resorting to metal detectors and security guards on their campuses. Mr. Wilson stated that MAPA wants Chicano studies included at all levels. Other concerns were the bilingual program and affirmative action. Parents were concerned about the number of expulsions and suspensions throughout the state and would consider a boycott of schools or board members' homes. Mr. Wilson was hopeful that the Board would work on the issues with the Jurupa chapter.

Butch Guzman, president of the Jurupa chapter of MAPA, stated that many children and parents were concerned about the education in the public school system. He urged a meeting with the Superintendent, administrators and MAPA members to find a solution to expulsions so that students have some opportunities to continue their education.

Victoria Baca, member of MAPA, Moreno Valley chapter, referred to the expulsions listed on page 7 of the agenda. She asked what were a student's chances to go through an Administrative Hearing Panel and not be expelled. Dr. Hendrick, Administrator of Education Support Services, explained that the sequence of numbers for discipline cases does not mean all students will be expelled. In response to Ms. Baca's request for ethnicity of students on the discipline list, the Superintendent replied that was a private matter between parent and administrator. Administration has statistics on expulsions and would welcome a meeting with Mr. Guzman and other members of the Jurupa chapter to discuss the issues.

CITIZEN COMMENTS
ON DISCIPLINE
MATTERS
(Cont'd)

Ms. Baca asked what options students have once they were expelled. The Superintendent replied that Jurupa was one of the first districts in the County to offer a community school operated by two fine teachers and the Riverside County Office of Education. The district has options for expelled students and that could be discussed in a future meeting.

Martha Hernandez, parent, stated that statistics show Hispanics were more affected by problems at schools. She asked for a meeting to discuss the issues.

BOARD MEMBER
REPORTS & COMMENTS

Board member Mary Burns stated that the Water Wise Newsletter, published by Western Municipal Water District, had an interesting article on a Stone Avenue Elementary School 4th grade teacher, Rebecca Kallinger, who spends five weeks each year teaching her students about water conservation. The Inland Empire Environmental EXPO will be held on April 23 at Cal State University in San Bernardino. At that time, Environmental Educator of the Year Awards will be given. Mrs. Burns asked that Ms. Kallinger's name be submitted as a candidate for an award.

Mrs. Burns requested that the district post signs prior to using pesticide in areas near schools where dairy waste has been dumped.

Board member David Barnes announced that Assemblyman Ted Weggeland has co-authored Assembly Bill 3746 which would force fifty-eight counties in the state to appropriately administer the \$1.3 billion in sales tax revenues intended for public safety under Proposition 172, the Public Safety Act. The proposition was passed by the voters this past November with the understanding that the sales taxes raised from the measure would be for public safety services. Mr. Weggeland's research indicated that a vast majority of the counties could be diverting public safety funds into other programs. Riverside county was only spending 17% of the \$46 million they received under Proposition 172 for public safety. Legislation proposed by Mr. Weggeland would require that all funds support public safety services. Mr. Barnes suggested sending a letter to the County about the proper use of Proposition 172 funds and requesting \$114,000 for two resource officers at Jurupa's high schools. If the legislation is signed by the Governor, it would become effective immediately.

Mr. Barnes praised Sky Country Elementary School's International Festival held this past Saturday. Each classroom picked a country to study and then built a booth depicting that country. Students at the festival received a passport which was stamped for each country visited. Students who had stamps from at least 20 countries were eligible to win more than 40 prizes at the end of the fair. The festival was attend by nearly 1,000 people. Mr. Barnes noted that the event was very educational, and could serve as a model for other schools.

Board member Sandra Ruane thanked those who addressed the Board. The Superintendent and administration would be more than willing to meet and hear parents' concerns.

Board member John Chavez congratulated the Jurupa Valley High School Agriculture Department for receiving the distinguished second place Golden Bell Award. Appreciation was expressed to Ms. DeMerseman, leader of Region 18, for her presentation of the award to the Jurupa Valley staff.

BOARD MEMBER
REPORTS & COMMENTS
(Cont'd)

Mr. Chavez stated that the Board was very sensitive to issues addressed by parents. The district has probably hired more Hispanics than other districts in the area. Many of the teachers at Jurupa graduated from Rubidoux High School. He pointed out that boycotting would only get students into trouble when they should be getting an education. Mr. Chavez explained that the Administrative Hearing Panel does make a recommendation regarding each discipline case. Parents are offered an opportunity to make a presentation and sometimes the outcome is different than the recommendation. Mr. Chavez stated the district makes every effort to have the education program available to all students and he was hopeful they would take advantage of it.

President Knight distributed materials on the California School Breakfast Program. He asked that the document be reviewed to determine what the district can do to enhance its breakfast program. Mr. Knight requested information regarding the district's resources in conjunction with the Federal government. The Superintendent responded that a number of sites have a school breakfast program, but administration will discuss the possibility of enhancing it for students.

ACTION SESSION

APPROVE MINUTES
-Motion #190

MR. CHAVEZ MOVED THE BOARD APPROVE MINUTES OF THE REGULAR MEETING OF FEBRUARY 22, 1994 AS PRINTED. MR. BARNES SECONDED THE MOTION WHICH CARRIED UNANIMOUSLY.

RECESS

At 8:15 p.m. President Knight called a short recess. The public session reconvened at 8:30 p.m.

REPORT ON
IMPLEMENTATION OF
MATHEMATICS
FRAMEWORK

The Assistant Superintendent Education Services stated that selecting textbooks and supplemental materials for the mathematics framework was a very involved process. A number of materials have been approved by the State Department of Education. The committee comprised of teachers and administrators will review the materials and determine what is most appropriate for Jurupa students. The committee will then make a recommendation to the Board of Education as to which mathematics textbook should be adopted and used for the next five to seven years. The annotated agenda included the names of teachers and administrators who will work with Tina Brennan, Curriculum Coordinator to make this determination. The process was very extensive and the recommendation will be presented to the Board sometime next year.

REVIEW INFORMATION
ON CLAS

The Director of Curriculum and Categorical Projects stated that the California Department of Education has produced a short video that gives a brief description of the California Learning Assessment System (CLAS) program. In the spring of 1993, students in grades 4, 8 and 10 were tested in the areas of language arts and mathematics under the new CLAS. The Director pointed out that CLAS monitors student achievement by producing individual student results according to statewide standards. Hundreds of teachers throughout the state have received specialized training in new scoring practices. The first set of test results from the new CLAS should be received shortly. A full report will be made to the Board at the March 21 meeting.

APPROVE STONE
AVENUE SCHOOL'S
"PLAN TO PLAN"
-Motion #191

The Director of Curriculum and Categorical Projects reported that Stone Avenue Elementary School was allocated \$5,000 in school improvement funds for the purpose of collecting data to begin writing a three-year school plan. A copy of Stone Avenue's "Plan to Plan" was included in the supporting documents. Board approval of this plan will allow Stone Avenue to participate in staff development days, and focus on assessment of student needs and instructional strategies for the 1993/94 school year.

MR. BARNES MOVED THE BOARD APPROVE STONE AVENUE ELEMENTARY SCHOOL'S "PLAN TO PLAN" FOR THE 1993/94 SCHOOL YEAR. MR. CHAVEZ SECONDED THE MOTION WHICH CARRIED UNANIMOUSLY.

ADOPT RESOLUTION
94/23, TAKING A
STAND AGAINST
MEDIA VIOLENCE
-Motion #192

The Assistant Superintendent Education Services stated that the California State Board of Education has taken a stand against media violence. School districts have been asked to adopt a resolution in support of a proposal recently endorsed by several leading education organizations requesting a broadcasters' code to limit violence on TV. A copy of the resolution will be forwarded to the Attorney General of the United States and local legislators.

MR. KNIGHT MOVED THE BOARD ADOPT RESOLUTION 94/23, TAKING A STAND AGAINST MEDIA VIOLENCE. MRS. RUANE SECONDED THE MOTION WHICH CARRIED UNANIMOUSLY.

HEAR REPORT ON
TOBACCO-FREE
SCHOOLS
REQUIREMENTS

The Director of Curriculum and Categorical Projects reported that Assembly Bill 99, requires the adoption of policies to achieve tobacco-free school districts by July 1, 1996. School Districts and the County Office of Education must have a tobacco-free environment by that date in order to continue to receive tobacco funds. The Jurupa District currently receives \$59,148 from tobacco use prevention education funds. The law was specific about what items are to be included in the policy. The Director noted that the district has anti-drug and anti-alcohol policies in place as a condition for receiving funds. Administration has already begun collecting sample policies on tobacco-free schools from neighboring districts and plans to bring a proposed policy to the Board in the next few weeks for implementation beginning September 1994.

SELECT AUDITOR FOR
1993/94
-Motion #193

The Assistant Superintendent Business Services stated that two years ago the Business office requested proposals from auditing firms. The auditing firm of Vavrinek, Trine, Day & Company was selected and performed this service from creditably. The district has an option to extend their contract for a third year at a cost of \$18,500.

MR. BARNES MOVED THE BOARD EXTEND THE CONTRACT WITH VAVRINEK, TRINE, DAY & COMPANY FOR THE 1993/94 FISCAL YEAR. MRS. RUANE SECONDED THE MOTION. In response to Mrs. Ruane, the Assistant Superintendent replied that the previous auditor was under contract for five to six years. The length of time varies by school district but normally the term is three years. Mr. Chavez stated that after completion of the third year, the district should seek proposals from other auditing firms. THE BOARD VOTED ON THE MOTION WHICH CARRIED UNANIMOUSLY.

AWARD BID 94/11L
FURNITURE &
EQUIPMENT FOR MIRA
LOMA MIDDLE
-Motion #194

MRS. BURNS MOVED THE BOARD AWARD BID #94/11L PER THE PURCHASING DEPARTMENT'S ANALYSIS, AND THAT PURCHASE ORDER NUMBERS 78988 THROUGH 78995, 78997, 79055 AND 79056 BE ISSUED PER THE ANALYSIS. MR. KNIGHT SECONDED THE MOTION WHICH CARRIED UNANIMOUSLY.

REPORT ON FACILITY
MATTERS

The Superintendent reported that administration conducts a facilities meeting weekly to review the status of about ten construction projects in the district.

REMOVE DISCIPLINE
CASE 94/57

Mr. Barnes requested that Item J-3, Discipline Case 94/57, be removed from the agenda at this time for the Superintendent to assess the ability to set a future date. The Board was in consensus.

ACT ON STUDENT
DISCIPLINE MATTERS
-Motion #195

The Administrator of Education Support Services stated that if there were no changes in the other recommendations for student discipline matters due to deliberation in closed session, the Board may act as printed.

MR. BARNES MOVED THE BOARD ACT ON DISCIPLINE CASES J-1 THROUGH J-9 AS PRINTED, EXCLUDING DISCIPLINE CASE #94/57: EXPEL THE PUPIL IN DISCIPLINE CASE #94/55 FOR VIOLATION OF EDUCATION CODE 48900 (a & k); EXPEL THE PUPIL IN DISCIPLINE CASE #94/56 FOR VIOLATION OF EDUCATION CODE 48900 (a & k); EXPEL THE PUPIL IN DISCIPLINE CASE #94/59 FOR VIOLATION OF EDUCATION CODE 48900 (c & j); EXPEL THE PUPIL IN DISCIPLINE CASE #94/60 FOR VIOLATION OF EDUCATION CODE 48900 (c, d & k); EXPEL THE PUPIL IN DISCIPLINE CASE #94/61 FOR VIOLATION OF EDUCATION CODE 48900 (b, c, j & k); EXPEL THE PUPIL IN DISCIPLINE CASE #94/62 FOR VIOLATION OF EDUCATION CODE 48900 (c, d & k); EXPEL THE PUPIL IN DISCIPLINE CASE #94/63 FOR VIOLATION OF EDUCATION CODE 48900 (c, d & k); EXPEL THE PUPIL IN DISCIPLINE CASE #94/64 FOR VIOLATION OF EDUCATION CODE 48900 (c, j & k). MR. CHAVEZ SECONDED THE MOTION WHICH CARRIED UNANIMOUSLY.

APPROVE PERSONNEL
REPORT #15
-Motion #196

MR. CHAVEZ MOVED THE BOARD APPROVE PERSONNEL REPORT 15 AS PRINTED. MR. BARNES SECONDED THE MOTION WHICH CARRIED UNANIMOUSLY.

APPROVE ROUTINE
ACTION ITEMS
-Motion #197

MR. CHAVEZ MOVED THE BOARD APPROVE ROUTINE ACTION ITEMS L 1-4 AS PRINTED: PURCHASE ORDERS; DISBURSEMENTS; AGREEMENTS; PROPOSED COMPREHENSIVE HIGH SCHOOL COURSE. MRS. RUANE SECONDED THE MOTION WHICH CARRIED UNANIMOUSLY.

REASSIGN
ADMINISTRATOR TO
TEACHING POSITION
-Motion #198

IN CLOSED SESSION, MR. BARNES MOVED THAT CERTIFICATED EMPLOYEE REX MOORE SHALL BE RELEASED FROM HIS ADMINISTRATIVE POSITION AND REASSIGNED TO A TEACHING POSITION AT THE END OF THE CURRENT 1993/94 SCHOOL YEAR. THE SUPERINTENDENT IS DIRECTED TO GIVE WRITTEN NOTICE OF THIS ACTION PURSUANT TO EDUCATION CODE SECTION 44951. MR. CHAVEZ SECONDED THE MOTION WHICH CARRIED UNANIMOUSLY BY THE FIVE BOARD MEMBERS.

REVIEW ROUTINE
INFORMATION
REPORTS

The Board reviewed the following routine information reports: Staff Development Days; Reports Pursuant to Education Code #48915.

CLOSED SESSION

At 6:00 p.m. on March 7, 1994, the Board met in Closed Session in the Superintendent's office at the Education Center. All Board members were present. Also in attendance were the Superintendent and other administrators. At 6:50 p.m. the Board President excused several administrators and met with the Superintendent and two Assistant Superintendents.

At 7:15 p.m. President Knight adjourned from Closed Session to open the Public Session.

ADJOURNMENT

There being no further business, President Knight adjourned the Regular Meeting from Public Session at 9:00 p.m.

MINUTES OF THE REGULAR MEETING OF MARCH 7, 1994 ARE APPROVED AS

President

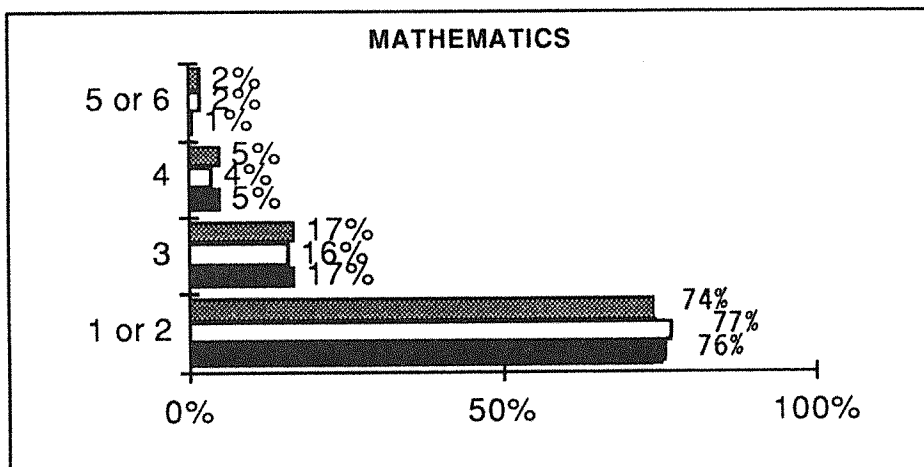
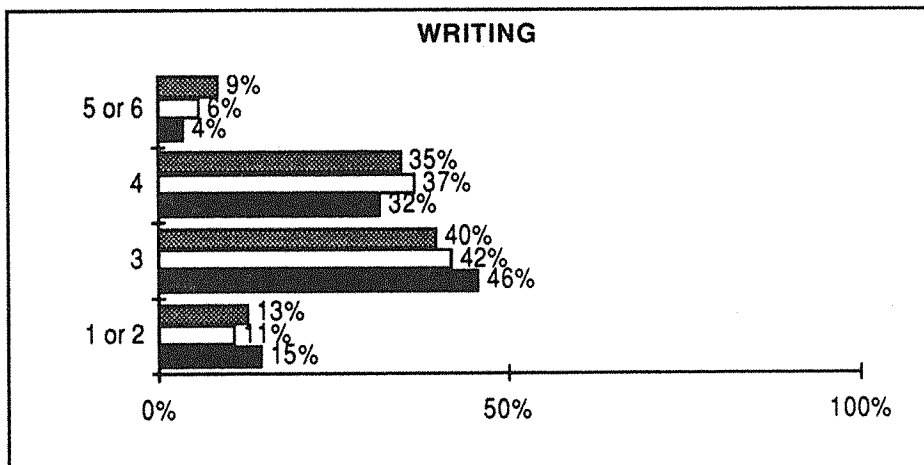
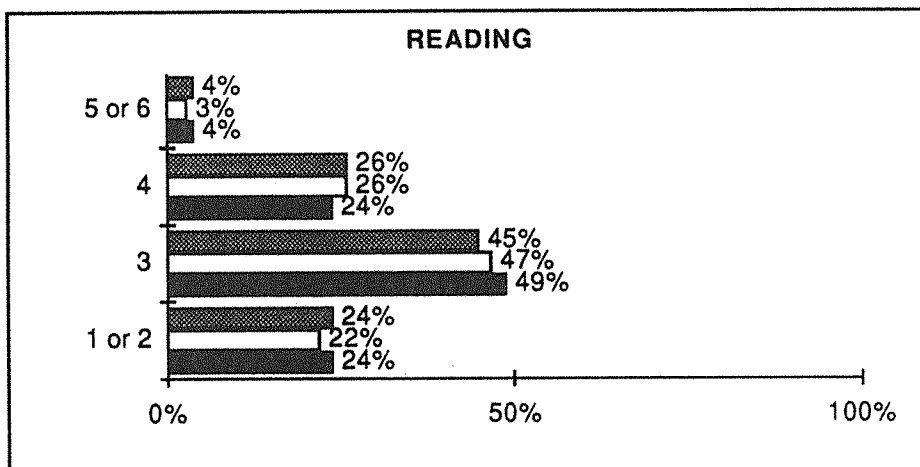
Clerk

Date

STUDENT ACHIEVEMENT

CLAS Results — 1993

Percent of 4th grade students performing at each level.



JURUPA UNIFIED

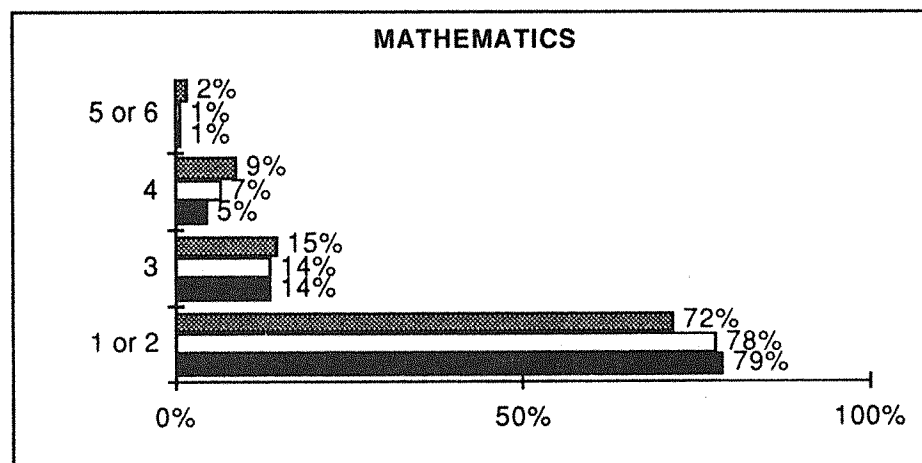
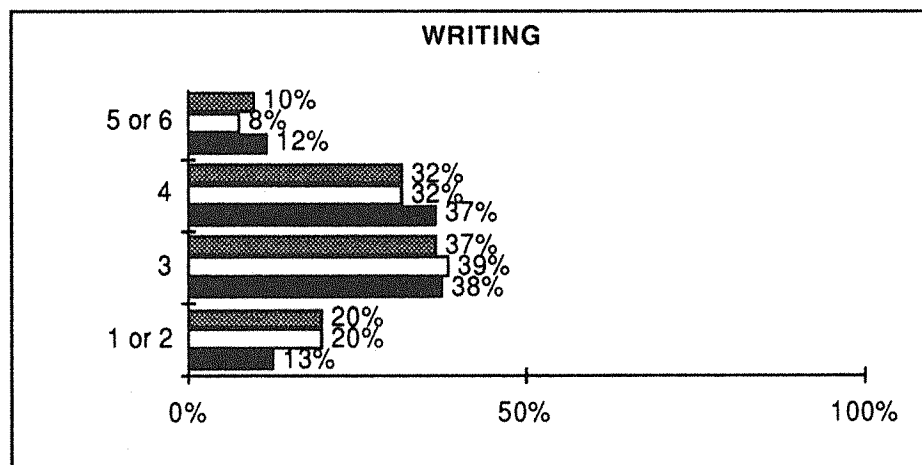
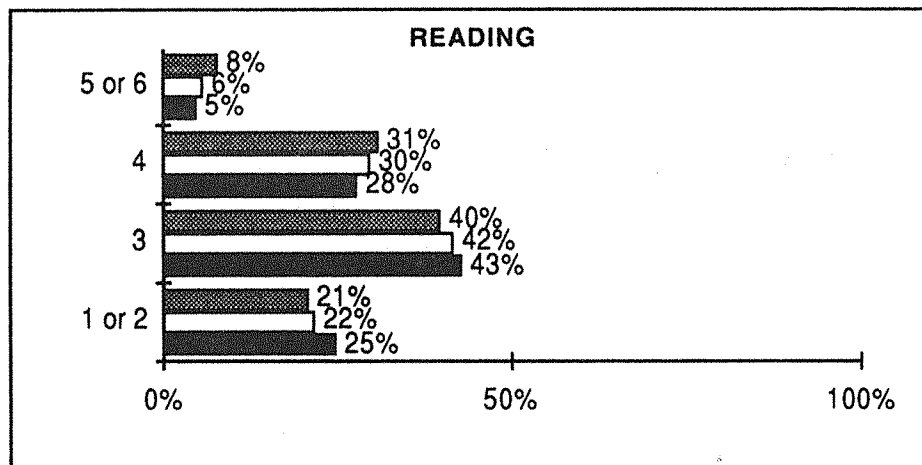
100 SIMILAR DISTRICTS

STATE

STUDENT ACHIEVEMENT

CLAS Results — 1993

Percent of 8th grade students performing at each level.



JURUPA UNIFIED

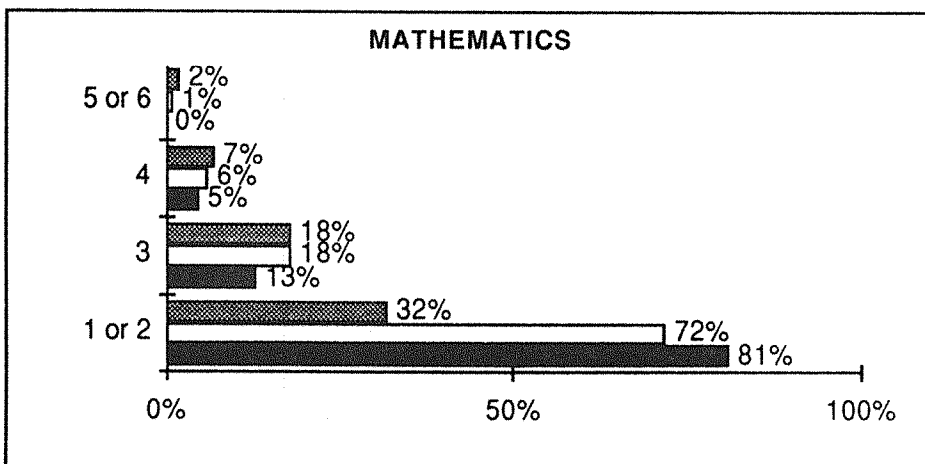
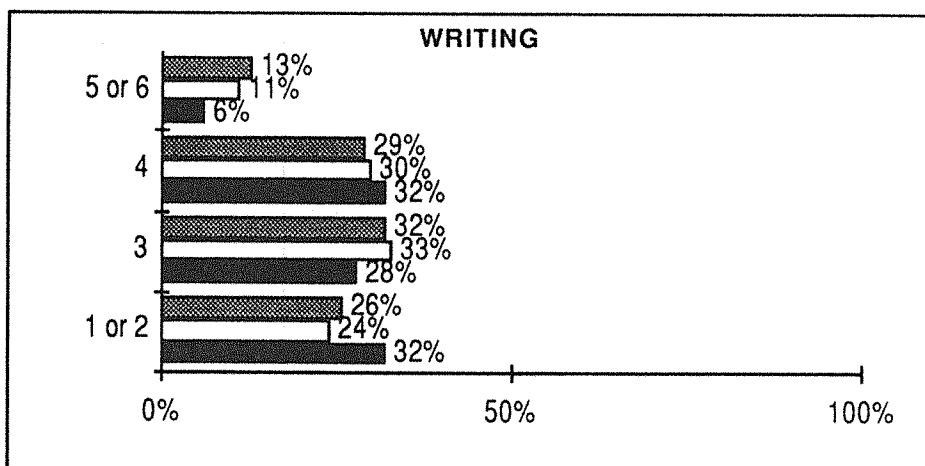
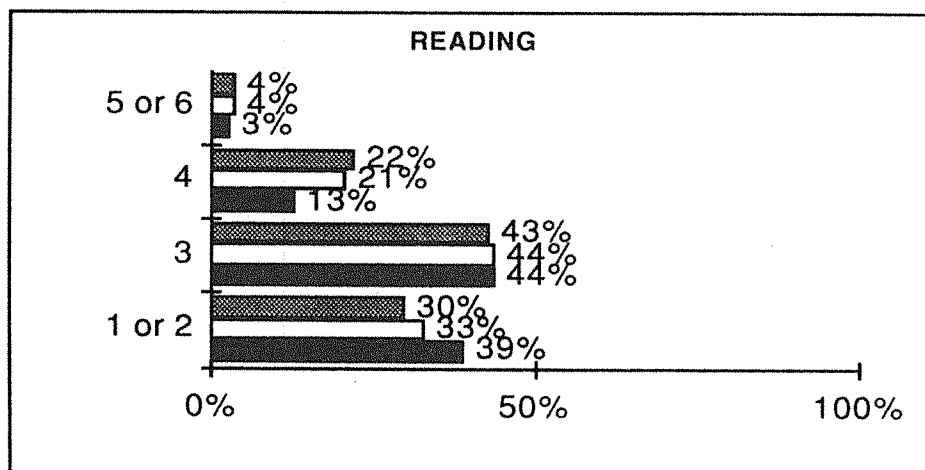
100 SIMILAR DISTRICTS

STATE

STUDENT ACHIEVEMENT

CLAS Results — 1993

Percent of 10th grade students performing at each level.



**JURUPA
UNIFIED**

**100 SIMILAR
DISTRICTS**

STATE

LEGEND	
CG	Each school and district has a comparison group consisting of 100 schools or districts which have a student population which is most like its own in terms of the average parent education level, student mobility, percentage of students with limited English proficiency and percentage of students receiving assistance under Aid to Families with Dependent children.
S	The school's or district's percent of students performing at performance levels 4-6 was similar to the percent for the comparison group.
H	The school's or district's percent of students performing at performance levels 4-6 was higher than the percent for the comparison group.
L	The school's or district's percent of students performing at performance levels 4-6 was lower than the percent for the comparison group.

**JURUPA UNIFIED SCHOOL DISTRICT
1993 CLAS RESULTS**

	READING					WRITING					MATH				
	% of Students					% of Students					% of Students				
	Performing at Levels					Performing at Levels					Performing at Levels				
	1 or 2	3	4	5 or 6	CG	1 or 2	3	4	5 or 6	CG	1 or 2	3	4	5 or 6	CG
GRADE 4															
State	24	45	26	4	-	13	40	35	9	-	75	17	5	2	-
Riverside Co.	26	47	24	3	-	15	42	34	6	-	78	16	4	1	-
Jurupa Unif.	24	49	24	4	L	15	46	32	4	L	76	17	5	1	S
Camino Real	23	63	13	0	L	9	31	50	9	H	66	17	12	5	H
Glen Avon	26	50	22	2	L	7	47	44	2	H	60	23	10	7	H
Granite Hill	20	35	41	5	H	13	48	33	3	L	65	30	2	2	S
Ina Arbuckle	59	39	3	0	L	34	47	15	0	L	87	7	0	0	L
Indian Hills	6	55	30	9	H	11	54	30	4	L	74	17	9	0	H
Mission Bell	20	43	30	7	H	4	38	38	18	H	80	16	4	0	L
Pacific Avenue	18	57	26	0	L	20	36	38	4	L	82	12	3	0	L
Pedley	20	41	33	5	H	17	39	39	0	L	77	16	5	2	H
Rustic Lane	34	44	16	5	L	27	45	25	0	L	83	7	4	0	H
Sky Country	12	48	29	12	H	7	58	31	5	L	57	37	4	2	L
Sunnyslope	9	65	26	0	L	9	41	47	2	H	66	27	7	0	H
Troth Street	40	42	18	0	L	22	54	15	7	L	88	12	0	0	L
Van Buren	20	61	17	2	L	20	60	16	2	L	84	17	0	0	L
West Riverside	26	43	26	4	H	12	51	30	5	L	93	5	3	0	L
GRADE 8															
State	21	40	31	8	-	20	37	32	10	-	73	15	9	2	-
Riverside Co.	22	42	30	6	-	18	41	32	8	-	78	14	7	1	-
Jurupa Unif.	25	43	28	5	L	13	38	37	12	H	79	14	5	1	L
Jurupa Mission	18	44	31	7	H	14	30	41	15	H	79	15	5	2	L
	31	42	24	3	L	11	46	32	10	H	78	14	6	1	L
GRADE 10															
State	30	43	22	5	-	25	32	29	12	-	70	18	7	2	-
Riverside Co.	33	43	19	4	-	26	33	28	10	-	75	16	5	1	-
Jurupa Unif.	39	44	13	3	L	32	28	32	6	L	81	13	5	0	L
Jurupa Valley	50	41	7	2	L	36	25	31	5	L	82	10	5	0	L
Nueva Vista	73	27	0	0	L	58	38	0	0	L	95	5	0	0	L
Rubidoux	25	48	21	5	H	24	29	38	9	H	77	18	4	1	L

JURUPA UNIFIED SCHOOL DISTRICT 1993 CLAS RESULTS

GRADE 4 - READING PERFORMANCE STANDARDS (PERCENT)													
		State/District/School						Comp. Group					
		1	2	3	4	5	6	1	2	3	4	5	6
		4	20	45	26	4	0						
State		4	20	49	24	4	0	3	19	47	26	3	0
Jurupa	N=608												
Camino Real	N=40	3	20	63	13	0	0	2	14	47	32	5	0
Glen Avon	N=44	2	24	50	22	2	0	4	23	47	23	3	0
Granite Hill	N=42	5	15	35	41	5	0	3	20	50	24	2	0
Ina Arbuckle	N=46	7	51	39	3	0	0	5	25	45	22	3	0
Indian Hills	N=49	2	4	55	30	9	0	2	17	49	28	4	0
Mission Bell	N=44	2	18	43	30	7	0	2	17	49	28	4	0
Pacific Avenue	N=44	2	16	57	26	0	0	4	20	49	24	3	0
Pedley	N=42	3	17	41	33	5	0	3	18	49	25	4	0
Rustic Lane	N=43	5	29	44	16	5	0	5	23	47	22	3	0
Sky Country	N=42	0	12	48	29	12	0	2	16	48	30	4	0
Sunnyslope	N=45	0	9	65	26	0	0	4	19	49	25	4	0
Troth Street	N=43	14	26	42	18	0	0	4	21	48	23	3	0
Van Buren	N=45	2	18	61	17	2	0	5	21	47	24	3	0
West Riverside	N=46	2	24	43	26	4	0	5	24	45	22	2	0

GRADE 8 - READING PERFORMANCE STANDARDS (PERCENT)													
		State/District/School						Comp. Group					
		1	2	3	4	5	6	1	2	3	4	5	6
		2	19	40	31	7	1						
State		1	24	43	28	5	0	2	20	42	30	6	0
Jurupa	N=393												
Mission Middle	N=187	2	29	42	24	3	0	3	21	43	29	5	0
Jurupa Middle	N=206	0	18	44	31	7	0	2	19	43	30	6	1

GRADE 10 - READING PERFORMANCE STANDARDS (PERCENT)													
		State/District/School						Comp. Group					
		1	2	3	4	5	6	1	2	3	4	5	6
		4	26	43	22	4	0						
State		2	37	44	13	3	0	4	27	44	21	4	0
Jurupa	N=383												
Rubidoux	N=180	0	25	48	21	4	1	4	29	44	19	3	0
Jurupa Valley	N=179	4	46	41	7	2	0	4	26	45	21	4	0
Nueva Vista	N=23	4	69	27	0	0	0	6	35	42	14	2	0

JURUPA UNIFIED SCHOOL DISTRICT 1993 CLAS RESULTS

GRADE 4 - WRITING PERFORMANCE STANDARDS (PERCENT)													
		State/District/School						Comp. Group					
		1	2	3	4	5	6	1	2	3	4	5	6
State		2	11	40	35	8	1						
Jurupa	N=612	2	13	46	32	4	0	1	10	42	37	7	0
Camino Real	N=46	0	9	31	50	9	0	1	7	36	43	10	1
Glen Avon	N=45	0	7	47	44	2	0	2	13	42	34	6	0
Granite Hill	N=38	0	13	48	33	3	0	1	12	41	35	7	0
Ina Arbuckle	N=41	2	32	47	15	0	0	3	13	44	31	6	0
Indian Hills	N=46	2	9	54	30	4	0	1	8	40	41	8	0
Mission Bell	N=45	0	4	38	38	16	2	1	8	40	41	8	0
Pacific Avenue	N=45	2	18	36	38	4	0	2	11	41	35	7	1
Pedley	N=43	7	9	39	39	0	0	1	10	43	37	7	0
Rustic Lane	N=40	7	20	45	25	0	0	3	13	44	31	6	0
Sky Country	N=45	0	7	58	31	5	0	1	7	38	43	10	0
Sunnyslope	N=44	0	9	41	47	2	0	2	11	42	36	6	0
Troth Street	N=46	7	15	54	15	7	0	2	12	42	35	6	0
Van Buren	N=45	0	20	60	16	2	0	2	12	44	34	5	0
West Riverside	N=43	0	12	51	30	5	0	2	14	43	31	6	0

GRADE 8 - WRITING PERFORMANCE STANDARDS (PERCENT)													
		State/District/School						Comp. Group					
		1	2	3	4	5	6	1	2	3	4	5	6
State		3	17	37	32	9	1						
Jurupa	N=225	2	11	38	37	11	1	3	17	39	32	8	0
Mission Middle	N=114	2	10	46	32	9	1	4	18	40	30	7	0
Jurupa Middle	N=111	2	12	30	41	14	1	3	17	40	32	7	0

GRADE 10 - WRITING PERFORMANCE STANDARDS (PERCENT)													
		State/District/School						Comp. Group					
		1	2	3	4	5	6	1	2	3	4	5	6
State		7	19	32	29	11	2						
Jurupa	N=310	8	24	28	32	6	0	6	18	33	30	10	1
Rubidoux	N=147	4	20	29	38	8	1	7	19	35	29	9	1
Jurupa Valley	N=138	11	25	25	31	5	0	6	18	34	30	9	1
Nueva Vista	N=24	12	46	38	0	0	0	9	26	33	23	5	1

JURUPA UNIFIED SCHOOL DISTRICT

1993 CLAS RESULTS

GRADE 4 - MATHEMATICS PERFORMANCE STANDARDS (PERCENT)													
		State/District/School						Comp. Group					
		1	2	3	4	5	6	1	2	3	4	5	6
		38	36	17	5	2	0						
State		40	36	17	5	1	0	39	38	16	4	2	0
Jurupa	N=638												
Camino Real	N=53	22	44	17	12	5	0	32	38	21	7	3	0
Glen Avon	N=41	16	45	23	10	7	0	46	35	14	3	1	0
Granite Hill	N=38	40	26	30	2	2	0	41	38	16	3	1	0
Ina Arbuckle	N=46	60	27	7	0	0	0	46	36	13	3	1	0
Indian Hills	N=49	39	35	17	9	0	0	32	39	21	6	2	0
Mission Bell	N=42	45	35	16	4	0	0	33	39	20	6	2	0
Pacific Avenue	N=58	49	33	12	3	0	0	42	37	15	3	1	0
Pedley	N=43	27	50	16	5	2	0	39	38	17	4	2	0
Rustic Lane	N=46	49	34	7	4	0	0	46	36	13	2	1	0
Sky Country	N=41	23	34	37	4	2	0	31	39	21	7	2	0
Sunnyslope	N=55	39	27	27	7	0	0	41	38	16	3	2	0
Troth Street	N=41	57	31	12	0	0	0	43	36	15	3	2	0
Van Buren	N=42	43	41	17	0	0	0	45	36	14	3	1	0
West Riverside	N=43	47	46	5	3	0	0	45	38	12	3	1	0

GRADE 8 - MATHEMATICS PERFORMANCE STANDARDS (PERCENT)													
		State/District/School						Comp. Group					
		1	2	3	4	5	6	1	2	3	4	5	6
		33	39	15	9	1	0						
State		37	42	14	5	1	0	34	42	14	7	1	0
Jurupa	N=292												
Mission Middle	N=142	36	43	14	6	1	0	36	41	14	7	1	0
Jurupa Middle	N=150	38	41	15	5	1	1	35	42	14	7	1	0

GRADE 10 - MATHEMATICS PERFORMANCE STANDARDS (PERCENT)													
		State/District/School						Comp. Group					
		1	2	3	4	5	6	1	2	3	4	5	6
		32	38	18	7	2	0						
State		37	44	13	5	0	0	33	39	18	6	2	0
Jurupa	N=282												
Rubidoux	N=116	37	39	18	4	1	0	34	39	17	5	1	0
Jurupa Valley	N=145	35	47	10	5	0	0	32	39	19	6	1	0
Nueva Vista	N=19	53	42	5	0	0	0	42	39	13	3	1	0

INTRADISTRICT OPEN ENROLLMENT

The Board of Education recognizes the Legislature's intent to offer choices to parents about where their children shall attend school. As such, the Board authorizes the Superintendent or designee to implement a policy of open enrollment within the District consistent with the following rules and regulations:

Students who reside within the boundaries of the Jurupa Unified School District may apply for enrollment in any school, except continuation schools, within its jurisdiction. The Superintendent or designee shall determine the capacity of each school and the number of transfer students it can accept without exceeding that capacity. He/she shall then establish a random, unbiased selection process for the admission of students from outside a school's attendance area.

Transportation shall not be provided for students who choose to attend school outside of the designated attendance area for their residence.

The Board retains the authority to maintain appropriate racial and ethnic balances among district schools.

Students currently residing within a school's attendance area shall not be displaced by other students transferring into the attendance area.

As a general principle, a student currently attending a school (whether as a resident of the attendance area, or on an inter or intradistrict transfer) should not be involuntarily displaced to accommodate another student. However, the student may be subject to displacement due to excessive enrollment beyond the designated capacity of the school. A kindergarten, seventh or ninth grade student must enter the lottery process as a new student to select their school of choice, regardless of the status of siblings attending a particular school.

Students from other districts who are eligible for enrollment based on parent employment and child care (Education Code sections 46601.5 and 48204) shall be granted residency status. An annual confirmation of the desire to continue enrollment at the school of choice shall be required pursuant to established timelines; however, no re-application for enrollment shall be needed.

High school students shall be subject to California Interscholastic Federation guidelines as they relate to athletic eligibility:

- 9th grade students are eligible for any level of competition.
- 10th - 12th grade students must establish a one year residency at the school before participating in varsity athletic events. No eligibility requirements exist for lower level athletic competition.

Once a transfer is granted, it may be reversed only with the approval of the Superintendent or designee.

Transfer requests may be granted throughout the school year, provided that space is available. Such transfers are not automatic, but are made at the sole discretion of the District.

The District may reject a transfer request if it has to create a new program to serve the student.

I. Selection Process

1. The capacity and projected enrollment will be determined by the Superintendent or designee. Factors such as the educational and physical capability of each school to accept new students, growth patterns in the district, existing racial and ethnic make-up of the schools, individual class size maximums, etc. may be considered.
2. Intradistrict Transfer Applications may be obtained in the office of any school in the District. Completed applications must be mailed to the Assistant Superintendent Education Services, 3924 Riverview Drive, Riverside, CA 92509.
3. An Intradistrict Transfer Application submitted by March 1st shall make the applicant student eligible for consideration for transfer and admission to his/her school of choice the following year. For the 1994/95 school year, the deadline will be April 30, 1994.
4. Transfer and admission to a school of choice shall be granted if the District determines that space is available.
5. If there are Intradistrict Transfer Applications for a school in excess of the capacity of that school, a lottery shall be conducted to determine which student(s) shall be transferred. A waiting list shall be established to indicate the order in which students may be accepted if additional openings occur.
6. Intradistrict Transfer Applications for students enrolled in any special program shall be processed using the same criteria applied to regular education pupils.
7. All applicants will be notified by mail after the close of the enrollment period as to the status of their request.

II. Annual Notification

Notifications shall be sent to parents/guardians at the beginning of each year describing all current statutory attendance options and local attendance options in the district including:

- Options for meeting residency requirements
- Program options offered within local attendance areas
- A description of special program options available
- A description of the procedure for application for alternative attendance or programs

Notification shall occur by the following methods:

- a. The annual "Parent Information" notification shall include information concerning this policy option.
- b. At the beginning of second semester, all parents of students currently residing in the district shall receive notice advising them of the open enrollment policy, the procedure to apply for a transfer, and applicable timelines.

Jurupa Unified School District

=====

NOTICE OF REVIEW

All action shall be taken on this report during a regular or authorized special meeting of the governing board.

To the County Superintendent of Schools:

This interim report is hereby filed by the governing board of the school district.

Date of Meeting: March 21, 1994

Signed _____

(President)

=====

NOTICE OF CRITERIA AND STANDARDS REVIEW. This interim report was reviewed in accordance with the state-adopted Criteria and Standards.

(Signed) _____

District Superintendent
or Designee

=====

CERTIFICATION OF FINANCIAL CONDITION

X POSITIVE CERTIFICATION

'As President of the Governing Board of this school district, I certify that this district will be able to meet its financial obligations for the current fiscal year and subsequent two fiscal years.'

QUALIFIED CERTIFICATION

'As President of the Governing Board of this school district, I certify that this district may not meet its financial obligations for the current fiscal year or two subsequent fiscal years.'

NEGATIVE CERTIFICATION

'As President of the Governing Board of this school district, I certify that based upon current projections this district will be unable to meet its financial obligations for the remainder of the fiscal year or for the subsequent fiscal year.'

=====

SUPPLEMENTAL INFORMATION

Report Prepared By: BARBARA REUL, DIRECTOR-BUSINESS SERVICES

Date Prepared: February 24, 1994

Telephone Number: (909) 360-2887

GENERAL FUND
SUMMARY

CALIFORNIA
DEPT OF EDUCATION
Form J-251 (Rev 10/93)

REVENUES, EXPENDITURES AND CHANGES
IN FUND BALANCE

Jurupa Unified School District

RIVERSIDE County

		Summary - Unrestricted/Restricted					
Description	Account Codes	Original Budget (A)	Board Approved Operating Budget (B)	Actuals To Date (C)	Projected Yr Totals (D)	Difference (Col. B & D) (E)	% Diff (E / B) (F)
A. REVENUES							
1) Revenue Limit Sources	8010-8099	+ 51,240,005	+ 50,831,175	+ 25,861,150	+ 51,062,581	231,406	0.46
2) Federal Revenues	8100-8299	+ 1,987,758	+ 2,567,728	+ 727,956	+ 2,459,401	-108,327	-4.22
3) Other State Revenues	8300-8599	+ 9,081,402	+ 9,389,594	+ 5,006,417	+ 9,240,126	-149,468	-1.59
4) Other Local Revenues	8600-8799	+ 1,415,706	+ 1,457,548	+ 478,601	+ 1,887,025	429,477	29.47
5) TOTAL, REVENUES		= 63,724,871	= 64,246,045	= 32,074,124	= 64,649,133		
B. EXPENDITURES							
1) Certificated Salaries	1000-1999	+ 35,029,203	+ 35,033,151	+ 17,647,574	+ 34,999,595	33,556	0.10
2) Classified Salaries	2000-2999	+ 9,148,805	+ 9,329,231	+ 4,837,876	+ 9,247,806	81,425	0.87
3) Employee Benefits	3000-3999	+ 11,229,416	+ 11,249,243	+ 5,165,386	+ 11,191,270	57,973	0.52
4) Books and Supplies	4000-4999	+ 3,271,893	+ 3,118,753	+ 1,304,895	+ 2,411,830	706,923	22.67
5) Services, Other Operating Expenses	5000-5999	+ 5,167,250	+ 5,296,713	+ 2,961,287	+ 5,160,615	136,098	2.57
6) Capital Outlay	6000-6599	+ 153,549	+ 609,054	+ 898,629	+ 943,244	-334,190	-54.87
7) Other Outgo	7100-7299	+ 699,292	+ 699,292	+ 0	+ 715,819	-16,527	-2.36
8) Direct Support/Indirect Costs	7300-7399	+ -228,489	+ -228,489	+ 0	+ -278,489	50,000	-21.88
9) TOTAL, EXPENDITURES		= 64,470,919	= 65,106,948	= 32,815,647	= 64,391,690		
C. EXCESS (DEFICIENCY) OF REVENUES OVER EXPENDITURES BEFORE OTHER FINANCING SOURCES AND USES (A5 - B9)							
		= -746,048	= -860,903	= -741,523	= 257,443		
D. OTHER FINANCING SOURCES/USES							
1) Interfund Transfers							
a) Transfers In	8910-8929	+ 0	+ 0	+ 0	+ 0	0	0.00
b) Transfers Out	7610-7629	- 435,000	- 250,000	- 0	- 319,515	-69,515	-27.81
2) Other Sources/Uses							
a) Sources	8930-8979	+ 0	+ 0	+ 0	+ 0	0	0.00
b) Uses	7630-7699	- 24,325	- 24,325	- 0	- 25,825	-1,500	-6.17
3) Contributions to Restricted Programs	8980-8999	+ 0	+ 0	+ 0	+ 0	0	0.00
4) TOTAL, OTHER FINANCING SOURCES/USES		= -459,325	= -274,325	= 0	= -345,340		

GENERAL FUND
SUMMARYREVENUES, EXPENDITURES AND CHANGES
IN FUND BALANCE

Jurupa Unified School District (33-67090)

RIVERSIDE County

		Summary - Unrestricted/Restricted					
Description	Account Codes	Original Budget (A)	Board Approved Operating Budget (B)	Actuals To Date (C)	Projected Yr Totals (D)	Difference (Col. B & D) (E)	% Diff (E / B) (F)
E. NET INCREASE (DECREASE) IN FUND BALANCE (C + D4)		= -1,205,373	= -1,135,228	= -741,523	= -87,897		
F. FUND BALANCE, RESERVES							
1) Beginning Balance							
a) As of July 1 - Unaudited	9791	+ 3,699,682	+ 3,699,682	+xxxxxxxxxxxxxxx	+ 3,699,682		
b) Audit Adjustments	9792	+ 0	+ 31,475	+xxxxxxxxxxxxxxx	+ 31,475	0	0.00
c) As of July 1-Audited (F1a + F1b)		= 3,699,682	= 3,731,157	=xxxxxxxxxxxxxxx	= 3,731,157		
d) Adj. for Restatements	9793	+ 0	+ 0	+xxxxxxxxxxxxxxx	+ 0	0	0.00
e) Net Beginning Balance		= 3,699,682	= 3,731,157	=xxxxxxxxxxxxxxx	= 3,731,157		
2) Ending Balance, June 30 (E + F1e)		= 2,494,309	= 2,595,929	=xxxxxxxxxxxxxxx	= 3,643,260		
Components of Ending Fund Balance							
a) Reserved Amounts							
Revolving Cash	9611	- 2,500	- 2,500	-xxxxxxxxxxxxxxx	- 2,500	0	0.00
Stores	9612	- 289,508	- 289,508	-xxxxxxxxxxxxxxx	- 241,171	48,337	16.70
Prepaid Expenditures	9613	- 0	- 0	-xxxxxxxxxxxxxxx	- 0	0	0.00
Other	9619	- 0	- 0	-xxxxxxxxxxxxxxx	- 0	0	0.00
General Reserve (EC 42124)	9630	- 0	- 0	-xxxxxxxxxxxxxxx	- 0	0	0.00
Legally Restricted Balances	9640	-xxxxxxxxxxxxxxx	-xxxxxxxxxxxxxxx	-xxxxxxxxxxxxxxx	- 400,622	xxxxxxxxxxxxxxx	xxxxxxxxxx
b) Designated Amounts							
Designated for Economic Uncertainties	9710	- 2,142,471	- 2,244,091	-xxxxxxxxxxxxxxx	- 2,717,342	-473,251	-21.09
Designated for SP ED SEVERLY HANDI RESVE	9720-9789	- 59,830	- 59,830	-xxxxxxxxxxxxxxx	- 59,830	0	0.00
SP ED ALLOCATION C/O		- 0	- 0	-xxxxxxxxxxxxxxx	- 16,420	-16,420	0.00
INSTRUCTIONAL SUPPLY C/O		- 0	- 0	-xxxxxxxxxxxxxxx	- 205,375	-205,375	0.00
c) Undesignated Amount	9790	=xxxxxxxxxxxxxxx	=xxxxxxxxxxxxxxx	=xxxxxxxxxxxxxxx	= 0		
d) Unappropriated Amount	9790	= 0	= 0	=xxxxxxxxxxxxxxx	=xxxxxxxxxxxxxxx		

GENERAL FUND
SUMMARYREVENUES, EXPENDITURES AND CHANGES
IN FUND BALANCE

Jurupa Unified School District (33-67090)

RIVERSIDE County

		UNRESTRICTED (OPTIONAL)					
Description	Account Codes	Original Budget (A)	Board Approved Operating Budget (B)	Actuals To Date (C)	Projected Yr Totals (D)	Difference (Col. B & D) (E)	% Diff (E / B) (F)
A. REVENUES							
1) Revenue Limit Sources	8010-8099	+ 49,792,008	+ 49,383,178	+ 25,861,150	+ 49,725,113	341,935	0.69
2) Federal Revenues	8100-8299	+ 64,052	+ 64,052	+ 32,716	+ 64,052	0	0.00
3) Other State Revenues	8300-8599	+ 1,473,053	+ 1,661,746	+ 594,174	+ 1,661,746	0	0.00
4) Other Local Revenues	8600-8799	+ 445,122	+ 483,616	+ 273,057	+ 602,520	118,904	24.59
5) TOTAL, REVENUES		= 51,774,235	= 51,592,592	= 26,761,097	= 52,053,431		
B. EXPENDITURES							
1) Certificated Salaries	1000-1999	+ 30,014,217	+ 29,702,068	+ 15,090,790	+ 29,680,214	21,854	0.07
2) Classified Salaries	2000-2999	+ 5,759,915	+ 5,792,428	+ 3,070,478	+ 5,792,105	323	0.01
3) Employee Benefits	3000-3999	+ 8,841,260	+ 8,797,392	+ 4,279,872	+ 8,747,629	49,763	0.57
4) Books and Supplies	4000-4999	+ 967,628	+ 907,896	+ 408,257	+ 673,196	234,700	25.85
5) Services, Other Operating Expenses	5000-5999	+ 3,719,166	+ 3,796,947	+ 2,360,591	+ 3,770,988	25,959	0.68
6) Capital Outlay	6000-6599	+ 14,150	+ 217,231	+ 717,807	+ 386,210	-168,979	-77.79
7) Other Outgo	7100-7299	+ 399,061	+ 399,061	+ 0	+ 415,588	-16,527	-4.14
8) Direct Support/Indirect Costs	7300-7399	+ -333,524	+ -373,080	+ 0	+ -395,040	21,960	-5.89
9) TOTAL, EXPENDITURES		= 49,381,873	= 49,239,943	= 25,927,795	= 49,070,890		
C. EXCESS (DEFICIENCY) OF REVENUES OVER EXPENDITURES BEFORE OTHER FINANCING SOURCES AND USES (A5 - B9)							
		= 2,392,362	= 2,352,649	= 833,302	= 2,982,541		
D. OTHER FINANCING SOURCES/USES							
1) Interfund Transfers							
a) Transfers In	8910-8929	+ 0	+ 0	+ 0	+ 0	0	0.00
b) Transfers Out	7610-7629	- 185,000	- 0	- 0	- 0	0	0.00
2) Other Sources/Uses							
a) Sources	8930-8979	+ 0	+ 0	+ 0	+ 0	0	0.00
b) Uses	7630-7699	- 24,325	- 24,325	- 0	- 25,825	-1,500	-6.17
3) Contributions to Restricted Programs	8980-8999	+ -2,536,068	+ -2,633,472	+ 0	+ -2,481,575	-151,897	5.77
4) TOTAL, OTHER FINANCING SOURCES/USES		= -2,745,393	= -2,657,797	= 0	= -2,507,400		

GENERAL FUND
SUMMARYREVENUES, EXPENDITURES AND CHANGES
IN FUND BALANCE

Jurupa Unified School District (33-67090)

RIVERSIDE County

		UNRESTRICTED (OPTIONAL)					
Description	Account Codes	Original Budget (A)	Board Approved Operating Budget (B)	Actuals To Date (C)	Projected Yr Totals (D)	Difference (Col. B & D) (E)	% Diff (E / B) (F)
=====							
E. NET INCREASE (DECREASE) IN FUND BALANCE	(C + D4)	= -353,031	= -305,148	= 833,302	= 475,141		
=====							
F. FUND BALANCE, RESERVES							
1) Beginning Balance							
a) As of July 1 - Unaudited	9791	+ 2,787,510	+ 2,787,510	+XXXXXXXXXXXXXX	+ 2,787,510		
b) Audit Adjustments	9792	+ 0	+ -96,263	+XXXXXXXXXXXXXX	+ -96,263	0	0.00
c) As of July 1-Audited (F1a + F1b)		= 2,787,510	= 2,691,247	=XXXXXXXXXXXXXX	= 2,691,247		
d) Adj. for Restatements	9793	+ 0	+ 0	+XXXXXXXXXXXXXX	+ 0	0	0.00
e) Net Beginning Balance		= 2,787,510	= 2,691,247	=XXXXXXXXXXXXXX	= 2,691,247		
2) Ending Balance, June 30 (E + F1e)		= 2,434,479	= 2,386,099	=XXXXXXXXXXXXXX	= 3,166,388		
=====							
Components of Ending Fund Balance							
a) Reserved Amounts							
Revolving Cash	9611	- 2,500	- 2,500	-XXXXXXXXXXXXXX	- 2,500	0	0.00
Stores	9612	- 289,508	- 289,508	-XXXXXXXXXXXXXX	- 241,171	48,337	16.70
Prepaid Expenditures	9613	- 0	- 0	-XXXXXXXXXXXXXX	- 0	0	0.00
Other	9619	- 0	- 0	-XXXXXXXXXXXXXX	- 0	0	0.00
General Reserve (EC 42124)	9630	- 0	- 0	-XXXXXXXXXXXXXX	- 0	0	0.00
Legally Restricted Balances	9640	-XXXXXXXXXXXXXX	-XXXXXXXXXXXXXX	-XXXXXXXXXXXXXX	- 0	XXXXXXXXXXXXXX	XXXXXXXXXX
b) Designated Amounts							
Designated for Economic Uncertainties	9710	- 2,142,471	- 2,094,091	-XXXXXXXXXXXXXX	- 2,717,342	-623,251	-29.76
Designated for SP ED SEVERLY HANDI RESVE	9720-9789	- 0	- 0	-XXXXXXXXXXXXXX	- 0	0	0.00
SP ED ALLOCATION C/O		- 0	- 0	-XXXXXXXXXXXXXX	- 0	0	0.00
INSTRUCTIONAL SUPPLY C/O		- 0	- 0	-XXXXXXXXXXXXXX	- 205,375	-205,375	0.00
c) Undesignated Amount	9790	=XXXXXXXXXXXXXX	=XXXXXXXXXXXXXX	=XXXXXXXXXXXXXX	= 0		
d) Unappropriated Amount	9790	= 0	= 0	=XXXXXXXXXXXXXX	=XXXXXXXXXXXXXX		
=====							

GENERAL FUND
SUMMARYREVENUES, EXPENDITURES AND CHANGES
IN FUND BALANCE

Jurupa Unified School District (33-67090)

RIVERSIDE County

		R E S T R I C T E D (OPTIONAL)					
Description	Account Codes	Original Budget (A)	Board Approved Operating Budget (B)	Actuals To Date (C)	Projected Yr Totals (D)	Difference (Col. B & D) (E)	% Diff (E / B) (F)
A. REVENUES							
1) Revenue Limit Sources	8010-8099	+ 1,447,997	+ 1,447,997	+ 0	+ 1,337,468	-110,529	-7.63
2) Federal Revenues	8100-8299	+ 1,923,706	+ 2,503,676	+ 695,240	+ 2,395,349	-108,327	-4.33
3) Other State Revenues	8300-8599	+ 7,608,349	+ 7,727,848	+ 4,412,243	+ 7,578,380	-149,468	-1.93
4) Other Local Revenues	8600-8799	+ 970,584	+ 973,932	+ 205,544	+ 1,284,505	310,573	31.89
5) TOTAL, REVENUES		= 11,950,636	= 12,653,453	= 5,313,027	= 12,595,702		
B. EXPENDITURES							
1) Certificated Salaries	1000-1999	+ 5,014,986	+ 5,331,083	+ 2,556,784	+ 5,319,381	11,702	0.22
2) Classified Salaries	2000-2999	+ 3,388,890	+ 3,536,803	+ 1,767,398	+ 3,455,701	81,102	2.29
3) Employee Benefits	3000-3999	+ 2,388,156	+ 2,451,851	+ 885,514	+ 2,443,641	8,210	0.33
4) Books and Supplies	4000-4999	+ 2,304,265	+ 2,210,857	+ 896,638	+ 1,738,634	472,223	21.36
5) Services, Other Operating Expenses	5000-5999	+ 1,448,084	+ 1,499,766	+ 600,696	+ 1,389,627	110,139	7.34
6) Capital Outlay	6000-6599	+ 139,399	+ 391,823	+ 180,822	+ 557,034	-165,211	-42.16
7) Other Outgo	7100-7299	+ 300,231	+ 300,231	+ 0	+ 300,231	0	0.00
8) Direct Support/Indirect Costs	7300-7399	+ 105,035	+ 144,591	+ 0	+ 116,551	28,040	19.39
9) TOTAL, EXPENDITURES		= 15,089,046	= 15,867,005	= 6,887,852	= 15,320,800		
C. EXCESS (DEFICIENCY) OF REVENUES OVER EXPENDITURES BEFORE OTHER FINANCING SOURCES AND USES (A5 - B9)		= -3,138,410	= -3,213,552	= -1,574,825	= -2,725,098		
D. OTHER FINANCING SOURCES/USES							
1) Interfund Transfers							
a) Transfers In	8910-8929	+ 0	+ 0	+ 0	+ 0	0	0.00
b) Transfers Out	7610-7629	- 250,000	- 250,000	- 0	- 319,515	-69,515	-27.81
2) Other Sources/Uses							
a) Sources	8930-8979	+ 0	+ 0	+ 0	+ 0	0	0.00
b) Uses	7630-7699	- 0	- 0	- 0	- 0	0	0.00
3) Contributions to Restricted Programs	8980-8999	+ 2,536,068	+ 2,633,472	+ 0	+ 2,481,575	151,897	5.77
4) TOTAL, OTHER FINANCING SOURCES/USES		= 2,286,068	= 2,383,472	= 0	= 2,162,060		

GENERAL FUND
SUMMARYREVENUES, EXPENDITURES AND CHANGES
IN FUND BALANCE

Jurupa Unified School District (33-67090)

RIVERSIDE County

Description	Account Codes	RESTRICTED (OPTIONAL)				Difference (Col. B & D) (E)	% Diff (E / B) (F)
		Original Budget (A)	Board Approved Operating Budget (B)	Actuals To Date (C)	Projected Yr Totals (D)		
E. NET INCREASE (DECREASE) IN FUND BALANCE	(C + D4)	= -852,342	= -830,080	= -1,574,825	= -563,038		
F. FUND BALANCE, RESERVES							
1) Beginning Balance							
a) As of July 1 - Unaudited	9791	+ 912,172	+ 912,172	+XXXXXXXXXXXXXX	+ 912,172		
b) Audit Adjustments	9792	+ 0	+ 127,738	+XXXXXXXXXXXXXX	+ 127,738	0	0.00
c) As of July 1-Audited (F1a + F1b)		= 912,172	= 1,039,910	=XXXXXXXXXXXXXX	= 1,039,910		
d) Adj. for Restatements	9793	+ 0	+ 0	+XXXXXXXXXXXXXX	+ 0	0	0.00
e) Net Beginning Balance		= 912,172	= 1,039,910	=XXXXXXXXXXXXXX	= 1,039,910		
2) Ending Balance, June 30 (E + F1e)		= 59,830	= 209,830	=XXXXXXXXXXXXXX	= 476,872		
Components of Ending Fund Balance							
a) Reserved Amounts							
Revolving Cash	9611	-XXXXXXXXXXXXXX	-XXXXXXXXXXXXXX	-XXXXXXXXXXXXXX	-XXXXXXXXXXXXXX	XXXXXXXXXXXXXX	XXXXXXXXXX
Stores	9612	- 0	- 0	-XXXXXXXXXXXXXX	- 0	0	0.00
Prepaid Expenditures	9613	- 0	- 0	-XXXXXXXXXXXXXX	- 0	0	0.00
Other	9619	- 0	- 0	-XXXXXXXXXXXXXX	- 0	0	0.00
General Reserve (EC 42124)	9630	-XXXXXXXXXXXXXX	-XXXXXXXXXXXXXX	-XXXXXXXXXXXXXX	-XXXXXXXXXXXXXX	XXXXXXXXXXXXXX	XXXXXXXXXX
Legally Restricted Balances	9640	-XXXXXXXXXXXXXX	-XXXXXXXXXXXXXX	-XXXXXXXXXXXXXX	- 400,622	XXXXXXXXXXXXXX	XXXXXXXXXX
b) Designated Amounts							
Designated for Economic Uncertainties	9710	- 0	- 150,000	-XXXXXXXXXXXXXX	- 0	150,000	100.00
Designated for SP ED SEVERLY HANDI RESVE	9720-9789	- 59,830	- 59,830	-XXXXXXXXXXXXXX	- 59,830	0	0.00
SP ED ALLOCATION C/O		- 0	- 0	-XXXXXXXXXXXXXX	- 16,420	-16,420	0.00
INSTRUCTIONAL SUPPLY C/O		- 0	- 0	-XXXXXXXXXXXXXX	- 0	0	0.00
c) Undesignated Amount	9790	=XXXXXXXXXXXXXX	=XXXXXXXXXXXXXX	=XXXXXXXXXXXXXX	= 0		
d) Unappropriated Amount	9790	= 0	= 0	=XXXXXXXXXXXXXX	=XXXXXXXXXXXXXX		

District 1993-94 Interim Report Average Daily Attendance

California Department of Education

Form J-250A (Rev. 10/93)

Mark one

<input type="checkbox"/>	1st Interim	District name: JURUPA UNIFIED SCHOOL DISTRICT
XX	2nd Interim	
<input type="checkbox"/>	3rd Interim	
		CDS Code: 3 3 - 6 7 0 9 0

Program	1993-94 Est Rev Limit ADA Original Budget (A)	1993-94 Est Rev Limit ADA Board Approved Oper. Budget (B)	93 - 94 FY Rev Limit ADA Projected * Year Totals (C)	Difference (Col. C - B) (D)	% Difference (Col. D / B) (E)
---------	---	---	--	-----------------------------------	--

Elementary

1	General Education	11,623	11,623	11,587	(36)	.0031
2	Special Education	336	336	348	12	.0336

High School

3	General Education	3,959	3,959	3,949	(10)	.0025
4	Special Education	106	106	107	1	.0094

Reported by County office

5	Special Education	109	109	128	19	.1743
6	County Community Schools	16	16	34	18	1.1250

Independent Study

7	Students 21 and over and continuously enrolled since 18	0	0	0	0	0
---	--	---	---	---	---	---

8	Total Elementary, High school, report by county office, and Indep Study	16,149	16,149	16,153	4	.0002
---	--	--------	--------	--------	---	-------

9	Regional Occupational (ROC/P)	0	0	0	0	0
---	-------------------------------	---	---	---	---	---

Classes for Adults

10	Concurrently Enrolled	6	6	6	0	0
11	Not Concurrently Enrolled-Mandated	142	142	142	0	0
12	Adults in Correctional Facilities	0	0	0	0	0
13	Independent Study (19 or over not continuously enrolled)	0	0	0	0	0
14	Total classes for adults	148	148	148	0	0

15	ADA Totals (Sum of lines 8, 9, and 14)	16,297	16,297	16,301	4	.0002
----	--	--------	--------	--------	---	-------

Summer School (Report in Hours)

16	Elementary	11,124	11,124	8,748	(2,376)	.2136
17	High School	165,856	165,856	175,769	9,913	.0598
18	Total Summer School	176,980	176,980	184,517	7,537	.0426

* For projecting subsequent years' revenue
limit ADA, complete column C only

GENERAL FUND

CALIFORNIA
DEPT OF EDUCATION
Form J-250-CASH (Rev 10/27/93)
RIVERSIDE County

Jurupa Unified School District

ACTUALS THRU MONTH OF January							
	July	August	September	October	November	December	
A. BEGINNING CASH	3,355,135	4,231,228	6,647,205	2,903,993	1,077,631	1,783,498	
B. RECEIPTS:							
Revenue Limit							
Property Tax	650,198	0	799	449,278	0	4,316,813	
State Aid	1,811,721	3,623,443	2,415,628	2,415,627	2,415,629	2,421,294	
Other	0	0	0	0	0	0	
Federal Revenues	0	16,420	8,272	56,056	16,296	532,654	
Other State Revenues	250,875	549,909	756,063	609,953	1,247,263	594,434	
Other Local Revenues	3,302	11,095	18,223	30,914	133,174	68,749	
Other Income	0	0	0	0	2,000,000	0	
Interfund Transfers In	0	0	0	0	0	0	
TOTAL RECEIPTS	2,716,096	4,200,867	3,198,985	3,561,828	5,812,362	7,933,944	
C. DISBURSEMENTS							
Salaries and Benefits	1,040,980	1,069,177	4,870,403	5,056,285	5,220,925	1,581,750	
Supplies and Services	209,695	520,381	940,350	690,037	442,640	800,760	
Capital Outlays	28,934	125,769	1,631,924	120,997	-751,560	43,522	
Other Outgo	0	0	0	0	0	0	
Interfund Transfers Out	0	0	0	0	0	0	
TOTAL DISBURSEMENTS	1,279,609	1,715,327	7,442,677	5,867,319	4,912,005	2,426,032	
D. PRIOR YEAR TRANSACTIONS							
Accounts Receivable	387,581	421,557	477,344	483,252	-184,356	155,539	
Accounts Payable	947,975	491,120	-23,136	4,123	10,134	1,212	
TOTAL PRIOR YEAR TRANSACTIONS	-560,394	-69,563	500,480	479,129	-194,490	154,327	
E. NET CASH (B - C + D)	876,093	2,415,977	-3,743,212	-1,826,362	705,867	5,662,239	
F. ENDING CASH (A + E)	4,231,228	6,647,205	2,903,993	1,077,631	1,783,498	7,445,737	

ACTUAL AND PROJECTED MONTHLY CASH FLOWS
FISCAL YEAR 1993/94

Form J-250-CASH
Page 2

GENERAL FUND

Jurupa Unified School District (33-67090)

RIVERSIDE County

ACTUALS THRU MONTH OF January							
	January	February	March	April	May	June	TOTAL
A. BEGINNING CASH	7,445,737	2,974,865	4,124,883	2,415,576	2,655,228	4,928,908	3,355,135
B. RECEIPTS:							
Revenue Limit							
Property Tax	2,925,092	1,519	102,548	1,163,234	4,838,043	40,195	14,487,719
State Aid	2,415,628	6,428,505	3,052,958	3,052,958	3,052,958	3,052,955	36,159,304
Other	0	0	0	0	0	415,558	415,558
Federal Revenues	98,259	211,782	15,134	589,054	255,214	630,402	2,429,543
Other State Revenues	997,919	942,252	940,421	715,510	554,355	895,894	9,054,848
Other Local Revenues	213,144	108,838	175,779	184,357	299,789	164,754	1,412,118
Other Income	-2,000,000	0	0	0	0	0	0
Interfund Transfers In	0	0	0	0	0	0	0
TOTAL RECEIPTS	4,650,042	7,692,896	4,286,840	5,705,113	9,000,359	5,199,758	63,959,090
C. DISBURSEMENTS							
Salaries and Benefits	8,811,316	5,151,399	5,325,178	5,373,645	5,540,845	6,396,768	55,438,671
Supplies and Services	590,224	656,280	584,912	667,800	692,500	776,866	7,572,445
Capital Outlays	-300,957	457,079	-508,159	-541,684	526,806	110,573	943,244
Other Outgo	0	0	0	0	0	487,330	487,330
Interfund Transfers Out	0	0	149,757	0	0	195,583	345,340
TOTAL DISBURSEMENTS	9,100,583	6,264,758	5,551,688	5,499,761	6,760,151	7,967,120	64,787,030
D. PRIOR YEAR TRANSACTIONS							
Accounts Receivable	0	15,600	7,695	34,300	33,472	108,888	1,940,872
Accounts Payable	20,331	293,720	452,154	0	0	0	2,197,633
TOTAL PRIOR YEAR TRANSACTIONS	-20,331	-278,120	-444,459	34,300	33,472	108,888	-256,761
E. NET CASH (B - C + D)	-4,470,872	1,150,018	-1,709,307	239,652	2,273,680	-2,658,474	-1,084,701
F. ENDING CASH (A + E)	2,974,865	4,124,883	2,415,576	2,655,228	4,928,908	2,270,434	2,270,434

Printed: 02/25/94 08:40 AM

E
Pg 10

Jurupa Unified School District

Instructions: All school districts and JPAs must complete the Summary Review (Sections I - III). School districts and JPAs projecting that they may not or will not have a positive cash balance or fund balance in the General Fund for the remainder of the current fiscal year or subsequent two fiscal years must also complete the In-depth Review (Section IV). Completion of the In-depth Review may also be required if requested by your county office of education. The Summary Review is available in both software and hard copy. The In-depth Review is not yet automated and is available in hard copy only.

GENERAL FUND

I. Cash Balance (Mark an X by one of the following three statements)

- X Based upon current projections, the cash balance will be positive at the end of the current and two subsequent fiscal years.

Based upon current projections, the cash balance may not be positive at the end of the current or two subsequent fiscal years.

Based upon current projections, the cash balance will be negative at the end of the current or subsequent fiscal year.

II. Fund Balance (Mark an X by one of the following three statements)

- X Based upon current projections, the fund balance will be positive at the end of the current and two subsequent fiscal years.

Based upon current projections, the fund balance may not be positive at the end of the current or two subsequent fiscal years.

Based upon current projections, the fund balance will be negative at the end of the current or subsequent fiscal year.

If you responded either that your Cash Balance or Fund Balance MAY NOT BE POSITIVE or WILL BE NEGATIVE, please explain below, or provide separate attachments, explaining the contributing factors.

III. Supplemental Information

1. Reserves

Reserve Standard	Size of district by ADA		
5% or \$50,000 (Greater of)	0	to	300
4% or \$50,000 (Greater of)	301	to	1,000
3%	1,001	to	30,000
2%	30,001	to	400,000
1%	400,001	and	Over

- a. Indicate the district's recommended percentage reserve. 3 %
- b. Indicate district's total expenditures, transfers out, and uses
(Form J-251, column D, sum of lines B-9, D-1b and D-2b) \$64,737,030
- c. Multiply the standard from step 1a times the amount from step 1b. \$ 1,942,110
- d. Enter the greater of \$50,000 or the amount from step 1c.
The recommended minimum reserve amount is: \$ 1,942,110
=====
- e. List and total below district's projected reserve amount.

(Note: Amounts designated as reserves must be UNRESTRICTED)

(1) General Fund Designated for Economic Uncertainties (DEU) (Form J-251, column D, #9710)	\$	2,717,342
(2) General Fund - Undesignated (J-251, column D, #9790)	\$	0
(3) Special Reserve Fund - DEU (#9710)	\$	0
(4) Special Reserve Fund - Undesignated (#9790)	\$	0
(5) Article XIII-B Fund - DEU (#9710)	\$	0
(6) Article XIII-B Fund - Undesignated (#9790)	\$	0
(7) Total projected unrestricted reserves (Sum of e1 through e6)	\$	2,717,342

- f. Do reserves meet the recommended minimum reserve amount? (Yes/No) Yes

If no, please explain below or provide separate attachments explaining why the recommended reserve levels have not been met. The explanation must include reasons for any decrease from original budget levels and how the reserves will be replenished in the subsequent fiscal year:

2. Status of salary and benefit negotiations

	Certificated	Classified
a. Indicate total number of FTEs included in the interim report.	684.0	555.0
b. Indicate change in FTEs (+ or -) from the original adopted budget.	1.5	9.0

Printed: 02/25/94 10:29 AM

E
B12

Certificated

Classified

c. Are salary and benefit negotiations settled for the current fiscal year (Yes/No) Yes Yes

d. If negotiations have not been settled:

Are any proposed or previously negotiated salary or benefit increases budgeted in expenditure categories 1000/2000 and 3000? (Yes/No)

What would an overall 1% increase for all personnel be estimated to cost in total dollars?

Salaries and Statutory Benefits (STRS/PERS, FICA, UI, Workers' Comp)	\$	0	\$	0
Health and welfare benefits	\$	0	\$	0

3. Multi-year commitments (include BOTH General Fund and OTHER FUNDS)

List all significant multi-year commitments for the current and subsequent two fiscal years. (Include significant lease and lease purchase commitments, repayment of COPs, balloon repayments, pending litigation, the total cost of multi-year salary and benefit settlements, etc.; exclude minor operating expenses such as equipment leases, maintenance agreements, etc.)

	Total Commitment	1993-94 Amount	1994-95 Amount	1995-96 Amount
Type of Commitment:				Number of Years 0
	\$ 0	\$ 0	\$ 0	\$ 0
Fund Source:				
Type of Commitment:				Number of Years 0
	\$ 0	\$ 0	\$ 0	\$ 0
Fund Source:				
Type of Commitment:				Number of Years 0
	\$ 0	\$ 0	\$ 0	\$ 0
Fund Source:				
Type of Commitment:				Number of Years 0
	\$ 0	\$ 0	\$ 0	\$ 0
Fund Source:				
Type of Commitment:				Number of Years 0
	\$ 0	\$ 0	\$ 0	\$ 0
Fund Source:				
Type of Commitment:				Number of Years 0
	\$ 0	\$ 0	\$ 0	\$ 0
Fund Source:				

4. Other Fund Balances

- a. Are any other fund balances projected to be negative for the current or subsequent two fiscal years: (Yes/No)

If yes, list the fund(s) and the projected fund balances:

Fund Name	1993-94 Fund Balance	1994-95 Fund Balance	1995-96 Fund Balance
	\$ 0	\$ 0	\$ 0
	\$ 0	\$ 0	\$ 0
	\$ 0	\$ 0	\$ 0
	\$ 0	\$ 0	\$ 0

- b. Please explain below, or provide separate attachments, on how each fund with projected negative balances will be resolved:

This is the end of the Summary Review. You do not need to continue on to the In-depth Review, unless (1) the Summary Review reflects that the district's or JPA's projected general fund balance or cash balance may not or will not be positive at the end of the current or subsequent two fiscal years or (2) your county office of education has requested an In-depth Review.

NOTE: The In-depth Review is not yet automated and is available in hard copy only.

RESOLUTION NO. 94/24

A RESOLUTION OF THE BOARD OF EDUCATION OF THE
JURUPA UNIFIED SCHOOL DISTRICT MODIFYING
SCHOOL FACILITIES FEES IMPOSED ON NEW
DEVELOPMENT

WHEREAS, Government Code Sections 53080 et seq. and 65995 et seq. authorize the governing board of any school district within the State to levy a fee against new residential, commercial and industrial development projects within the district for the purpose of funding the construction and reconstruction of school facilities; and

WHEREAS, pursuant to Government Code Section 65995, the State Allocation Board at its January meeting increased the maximum amount of the school facilities fee which may be levied under Government Code Sections 53080 and 65995 according to the adjustment for inflation set forth in the statewide cost index for Class B construction; and

WHEREAS, the State Allocation Board determined that, based upon the 1992 and 1993 adjustments in the statewide cost index for Class B construction, the maximum school facilities fee which may be levied pursuant to Government Code Section 53080 on new residential space shall be \$1.72 per square foot on assessable space, and the maximum school facilities fee which may be levied pursuant to Government Code Section 53080 on commercial and industrial development shall be 28¢ per square foot on covered and enclosed space; and

WHEREAS, because Proposition 170 (ACA 6) failed to receive voter approval in the statewide election in November 1993,

Government Code Section 65995.3 was automatically repealed and school districts are no longer authorized to levy a separate fee of \$1.00 per square foot of residential development under that section; and

WHEREAS, the Board of Education (the "Board") of the Jurupa Unified School District (the "District") has determined that the District's school facilities continue to be overcrowded and its educational programs seriously impacted by the increasing student population caused by new residential, commercial and industrial development within the District's boundaries; and

WHEREAS, the Board has based its findings on a document entitled "Justification Report for School Facility Fees -- Commercial, Industrial and Residential Development Projects" (the "Impact Report"), which analyzes the District's current school facilities, the estimated number of students which will be generated by new residential, commercial and industrial development within the District, and the estimated costs which will be required to construct permanent and portable school facilities to accommodate the students generated by such new construction; and

WHEREAS, the Impact Report demonstrates that the estimated costs of providing school facilities for students generated by new construction will exceed the maximum amount of revenue which will be collected from school facilities fees levied pursuant to the Government Code Sections 53080 and 65995; and

WHEREAS, the Impact Report justifies the District's imposition of a school facilities fee on residential construction as set forth in this resolution by analyzing student generation

data for residential development projects and by demonstrating that new facilities are necessary to accommodate increased enrollment resulting from such development; and

WHEREAS, the Impact Report further justifies the District's imposition of a school facilities fee on new commercial and industrial construction as set forth in this resolution by analyzing specific categories of commercial and industrial development which were determined to impact the District's facilities based upon the square footage of the construction, the anticipated number of employees and the number of new students generated by such employees; and

WHEREAS, because Government Code Section 65995.3 was repealed, it is necessary that this Board repeal Resolution No. 93/26 which established a separate school facilities fee for residential construction based on Section 65995.3; and

WHEREAS, this Board deems it to be necessary and desirable and in the best interest of the students, teachers, parents and electorate of the District that school facilities fees levied under Government Code Sections 53080 and 65995 be increased to \$1.72 per square foot of assessable space for residential development, and to 28¢ per square foot of covered and enclosed space for commercial and industrial development; and

WHEREAS, this adjustment in school facilities fees has been reviewed by the District's Board and staff under the California Environmental Quality Act ("CEQA"); and

WHEREAS, no city or county may issue a building permit for any new residential, commercial and industrial development

within the District absent a certification by the District of compliance by the developer with the requirements regarding school facilities fees as set forth in the Government Code; and

WHEREAS, the appropriate land use jurisdictions will be notified of these school facilities fee calculations and will be requested to continue to work with the District to assure that the school facilities fee program benefits the residents and students of our community; and

WHEREAS, the District (1) has made available to the public, ten days prior to its public meeting, data indicating the estimated cost required to provide the service for which this school facilities fee is levied and the revenue sources anticipated to provide the service; (2) has mailed notice at least fourteen days prior to this meeting to all interested parties who have requested notice of modification to the District's school facilities fees; and (3) has held a duly noticed, regularly scheduled public meeting at which oral and written testimony was received regarding the proposed fees.

NOW, THEREFORE, BE IT RESOLVED by the Board of Education of the Jurupa Unified School District as follows:

Section 1. Resolution No. 93/26 which levied a fee against residential development in the District pursuant to Government Code Section 65995.3 is hereby repealed.

Section 2. This Board hereby increases the amount of the school facilities fee it levies against all new residential development pursuant to Government Code Sections 53080 and 65995 to \$1.72 per square foot of assessable space.

Section 3. This Board hereby increases the amount of the school facilities fee it levies against all new commercial and industrial development pursuant to Government Code Sections 53080 and 65995 to 28¢ per square foot of covered and enclosed space.

Section 4. This Board has reviewed the Impact Report and finds, based upon the report and the information and testimony presented in conjunction with it, as follows:

Section 4.1. New development will result in a substantial increase in student enrollment necessitating the construction of new school facilities to accommodate the new growth, and therefore a reasonable relationship exists between the use of school facilities fees, which is to fund the construction and reconstruction of school facilities, and the residential, commercial and industrial development projects on which the school facilities fee will be imposed.

Section 4.2. New residential, commercial and industrial construction will result in a substantial increase in student enrollment and therefore a reasonable relationship exists between the District's need for new and reconstructed school facilities and the types of development on which the fees will be imposed.

Section 5. The Board finds and determines that the adoption, increase or imposition of school facilities fees is statutorily exempt from CEQA under Government Code Section 53080.1(a).

Section 6. District staff is directed to file a Notice of Exemption with the Riverside County Clerk's Office.

Section 7. District staff is hereby instructed to work with the appropriate land use jurisdictions to ensure compliance with the California Government Code Section 53080, which provides that no city or county may issue a building permit for any development project within this District without certification by this District of compliance by that development project with the school facilities fee requirements of this resolution.

Section 8. District staff is hereby instructed to transmit certified copies of this resolution to all appropriate land use jurisdictions issuing building permits within the District to inform each of them of the District's current school facilities fee for development projects.

PASSED AND ADOPTED this 21st day of March, 1994 by the following vote:

AYES:

NOES:

ABSTAIN:

ABSENT:

BOARD OF EDUCATION OF THE
JURUPA UNIFIED SCHOOL DISTRICT

President of the Board of Education

ATTEST:

Clerk of the Board of Education

RESOLUTION NO. 94/25

AN URGENCY INTERIM RESOLUTION OF THE BOARD OF
EDUCATION OF THE JURUPA UNIFIED SCHOOL
DISTRICT MODIFYING SCHOOL FACILITIES FEES
IMPOSED ON NEW DEVELOPMENT

WHEREAS, Government Code Sections 53080 et seq. and 65995 et seq. authorize the governing board of any school district within the State to levy a fee against new residential, commercial and industrial development within the district for the purpose of funding the construction and reconstruction of school facilities; and

WHEREAS, pursuant to Government Code Section 65995, the State Allocation Board at its January meeting increased the maximum amount of the school facilities fees which may be levied under Government Code Sections 53080 and 65995 according to the adjustment for inflation set forth in the statewide cost index for Class B construction; and

WHEREAS, the State Allocation Board determined that, based upon the 1992 and 1993 adjustments in the statewide cost index for Class B construction, the maximum school facilities fee which may be levied pursuant to Government Code Section 53080 on new residential development shall be \$1.72 per square foot on assessable space, and the maximum school facilities fee which may be levied pursuant to Government Code Section 53080 on commercial and industrial development shall be 28¢ per square foot on covered and enclosed space; and

WHEREAS, because Proposition 170 (ACA 6) failed to receive voter approval in the statewide election in November 1993,

Government Code Section 65995.3 was automatically repealed and school districts are no longer authorized to levy a separate fee of \$1.00 per square foot of residential development under that section; and

WHEREAS, the Board of Education (the "Board") of the Jurupa Unified School District (the "District") has determined that the District's school facilities continue to be overcrowded and its educational programs seriously impacted by the increasing student population generated by new residential, commercial and industrial development within the District's boundaries; and

WHEREAS, the Board has based its findings on a document entitled "Justification Report for School Facility Fees -- Commercial, Industrial and Residential Development Projects" (the "Impact Report"), which analyzes the District's current school facilities, the estimated number of students which will be generated by new residential, commercial and industrial development within the District, and the estimated costs which will be required to construct permanent and portable school facilities to accommodate the students generated by such new construction; and

WHEREAS, the Impact Report demonstrates that the estimated costs of providing school facilities for students generated by new development will exceed the maximum amount of revenue which will be collected from school facilities fees levied pursuant to Government Code Sections 53080 and 65995; and

WHEREAS, the Impact Report justifies the District's imposition of a school facilities fee on new residential construction as set forth in this resolution by analyzing student

generation data for new construction and by demonstrating that additional school facilities are necessary to accommodate the increased student enrollment resulting from such construction; and

WHEREAS, the Impact Report further justifies the District's imposition of a school facilities fee on new commercial and industrial construction as set forth in this resolution by analyzing specific categories of commercial and industrial development which were determined to impact the District's school facilities based upon the square footage of the construction, the anticipated number of employees generated by the development and the number of new students generated by such employees; and

WHEREAS, because Government Code Section 65995.3 was repealed, it is necessary that this Board repeal Resolution No. 93/26 which established a separate school facilities fee for residential construction based on Section 65995.3; and

WHEREAS, this Board deems it to be necessary and desirable and in the best interest of the students, teachers, parents and electorate of the District that its school facilities fees levied under Government Code Sections 53080 and 65995 be increased to \$1.72 per square foot of assessable space for residential development, and to 28¢ per square foot of chargeable covered and enclosed space for commercial and industrial development; and

WHEREAS, this adjustment in school facilities fees has been reviewed by the District's Board and staff under the California Environmental Quality Act ("CEQA"); and

WHEREAS, no city or county may issue a building permit for any new residential, commercial and industrial development within the District absent a certification by the District of compliance by the developer with the requirements regarding school facilities fees as set forth in the Government Code; and

WHEREAS, the appropriate land use jurisdictions will be notified of these school facilities fee calculations and will be requested to continue to work with the District to assure that the District's school facilities fee program benefits the residents and students of our community; and

WHEREAS, the District (1) has made available to the public, ten days prior to its public meeting, data indicating the estimated cost required to provide the service for which this school facilities fee is levied and the revenue sources anticipated to provide the service; (2) has mailed notice at least fourteen days prior to this meeting to all interested parties who have requested notice of modification to the District's school facilities fees; and (3) has held a duly noticed, regularly scheduled public meeting at which oral and written testimony was received regarding the proposed fees; and

WHEREAS, Government Code Section 53080.1(b) authorizes this Board to adopt an urgency resolution as interim authorization for these school facilities fees when necessary to respond to a current and immediate threat to the public health, welfare and safety, without following procedures otherwise required for the adoption of such fees, if such resolution is enacted by a four-fifths vote of this Board, and if such resolution contains findings

describing the current and immediate threat to the public health, welfare and safety service that exists in the absence of such an interim resolution; and

WHEREAS, this Board has determined that there is a current and immediate threat to the District's school building program and that it is in the best interests of the students, teachers, parents and electorate of this District that this urgency interim resolution be enacted as part of its school fee program in order to avoid a hiatus in fee collections.

NOW, THEREFORE, BE IT RESOLVED by the Board of Education of the Jurupa Unified School District as follows:

Section 1. Resolution No. 93/26 which levied a fee against residential development in the District pursuant to Government Code Section 65995.3 is hereby repealed.

Section 2. This Board hereby increases the amount of the school facilities fee it levies against all new residential development pursuant to Government Code Sections 53080 and 65995 to \$1.72 per square foot of assessable space.

Section 3. This Board hereby increases the amount of the school facilities fee it levies against all new commercial and industrial development pursuant to Government Code Sections 53080 and 65995 to 28¢ per square foot of covered and enclosed space.

Section 4. This urgency interim resolution is adopted by at least a four-fifths vote of this Board and shall take effect immediately on the date of its adoption, but shall have no force or effect thirty (30) days after its adoption.

Section 5. The Board hereby finds that the District has committed the funds within its school facilities fee account for the construction or reconstruction of new school facilities; that without the enactment of this urgency interim resolution, this District will be unable to levy the adjusted school facilities fees on new development for a significant period of time until Resolution No. 94/24 takes effect; that new and rehabilitated classroom facilities are needed to house students generated by new construction within the District's boundaries; that the resulting loss of revenue could seriously impact the District's classroom construction program designed to alleviate overcrowding; and that such potential damage is a current and immediate threat to the public health, safety and welfare of the students within the District.

Section 6. This Board has reviewed the Impact Report and finds, based upon the report and the information and testimony presented in conjunction with it, as follows:

Section 6.1. New construction will result in a substantial increase in student enrollment necessitating the construction of new school facilities to accommodate the new growth, and therefore a reasonable relationship exists between the use of school facilities fees, which is to fund the construction and reconstruction of school facilities, and the residential, commercial and industrial development on which the school facilities fee will be imposed.

Section 6.2. New residential, commercial and industrial development will result in a substantial increase in

student enrollment and therefore a reasonable relationship exists between the District's need for new and reconstructed school facilities and the types of development on which the fees will be imposed.

Section 7. The Board finds and determines that the adoption, increase or imposition of school facilities fees is statutorily exempt from CEQA under Government Code Section 53080.1(a).

Section 8. District staff is directed to file a Notice of Exemption with the Riverside County Clerk's Office.

Section 9. District staff is hereby instructed to work with the appropriate land use jurisdictions to ensure compliance with the California Government Code Section 53080, which provides that no city or county may issue a building permit for any development project within this District without certification by this District of compliance by that development project with the school facilities fee requirements of this resolution.

Section 10. District staff is hereby instructed to transmit certified copies of this resolution to all appropriate land use jurisdictions issuing building permits within the District to inform each of them of the District's current school facilities fee for development projects.

PASSED AND ADOPTED this 21st day of March, 1994 by the
following vote:

AYES:

NOES:

ABSTAIN:

ABSENT:

BOARD OF EDUCATION OF THE
JURUPA UNIFIED SCHOOL DISTRICT

President of the Board of Education

ATTEST:

Clerk of the Board of Education

PRELIMINARY EXEMPTION ASSESSMENT

(Certificate of Determination
When Attached to Notice of Exemption)

1. Name or description of project: Levy and collection of school facilities fee as authorized in Government Code Sections 53080 and 65995
2. Location: Boundaries of the Jurupa Unified School District
3. Entity or person undertaking project:

X A. Jurupa Unified School District

_____ B. Other (Private)

(1) Name: _____

(2) Address: _____

4. Staff Determination:

The School District's Staff, having undertaken and completed a preliminary review of this project in accordance with the School District's "Local Guidelines for Implementing the California Environmental Quality Act (CEQA)" has concluded that this project does not require further environmental assessment because:

a. _____ The proposed action does not constitute a project under CEQA.

b. _____ The project is a Ministerial Project.

c. _____ The project is an Emergency Project.

d. _____ The project constitutes a feasibility or planning study.

e. _____ The project is categorically exempt.

Applicable Exemption Class: _____

f. X The project is statutorily exempt pursuant to Government Code Section 53080.1(a).

Applicable Exemption: The adoption, increase, or imposition of any fee pursuant to Government Code Section 53080.

g. _____ The project is otherwise exempt on the following basis: _____

h. _____ The project involves another public agency which constitutes the Lead Agency. Name of Lead Agency: _____

Date: _____

Rollin Edmunds, Asst. Superintendent
Business Services

NOTICE OF EXEMPTION

TO: X Riverside County Clerk
4050 Main Street
Riverside, CA 92502

FROM: Jurupa Unified School District
3924 Riverview Drive
Riverside, CA 92509

____ Office of Planning
1400 Tenth Street
Sacramento, CA 95814

1. Project Title: Levy and collection of school facilities fee on new development
2. Project Location - Specific: Boundaries of the Jurupa Unified School District
3. (a) Project Location - City: Riverside
(b) Project Location - County: Riverside
4. Description of nature, purpose, and beneficiaries of Project: Levy and collection of school facilities fee pursuant to Government Code Sections 53080 and 65995
5. Name of Public Agency approving project: Jurupa Unified School District
6. Name of Person or Agency carrying out project: Jurupa Unified School District
7. Exempt status: (Check one)
 - (a) _____ Ministerial project.
 - (b) _____ Not a project.
 - (c) _____ Emergency Project.
 - (d) _____ Categorical Exemption. State type and class number: _____
 - (e) _____ Declared Emergency.
 - (f) X Statutory Exemption. State Code section number: Government Code Section 53080.1(a)
 - (g) _____ Other. Explanation: _____
8. Reason why project was exempt: _____
9. Contact Person: Rollin Edmunds
Telephone: (909) 360-2757
10. Attach Preliminary Exemption Assessment (Form "A") before filing.

Date Received for Filing: _____
(Clerk Stamp Here)

(Signature) Rollin Edmunds

Title Assistant Superintendent
Business Services

JURUPA UNIFIED SCHOOL DISTRICT
RESOLUTION #94/28
OF THE BOARD OF EDUCATION OF THE
JURUPA UNIFIED SCHOOL DISTRICT
AUTHORIZING SCHOOL BUILDING PROJECT COST AND ALLOWABLE AREA
STANDARDS
FOR PERALTA ELEMENTARY SCHOOL;
ONE PORTABLE - RUSTIC LANE ELEMENTARY SCHOOL;
TWO PORTABLES - INA ARBUCKLE ELEMENTARY SCHOOL;
THREE PORTABLES - VAN BUREN ELEMENTARY SCHOOL

WHEREAS, California Education Code Section 39140(c) provides that the Governing Board of the District, by resolution, must indicate agreement that any school building construction or modernization that exceeds cost and area standards shall be deducted from the allowable building area for which the District makes a subsequent application and would otherwise be determined eligible. This restriction is not subject to waiver or exception.

NOW, THEREFORE, BE IT RESOLVED that the undersigned Governing Board representative of the above-named School District, does hereby agree that the above described school projects are State projects where the total area of the projects does not exceed 110 percent of the State allowance, meets the cost or area standards of Education Code Sections 17700 et seq., and,

BE IT FURTHER RESOLVED that the calculation of the allowable area for any future requests for capital outlay funding from the State pursuant to Education Code Sections 17700 et seq., or successor, will be reduced by the amount of the excessive construction cost or area, if any, without exception.

PASSED and ADOPTED this 21st day of March, 1994
BOARD OF EDUCATION

Mary L. Burns, Clerk

STATE OF CALIFORNIA
SCHOOL DISTRICT BOARD OF TRUSTEES RESOLUTION
FOR SCHOOL BUILDING PROJECT COST AND ALLOWABLE AREA STANDARDS
 SAB 02 (REV. 02/93)

DEPARTMENT OF GENERAL SERVICES
 STATE ALLOCATION BOARD

DIVISION OF THE STATE ARCHITECT FILE AND APPLICATION NUMBER (To be completed by OSA/SSS)	
SCHOOL DISTRICT Jurupa Unified School District	COUNTY Riverside
SCHOOL NAME Peralta Elementary School	PROJECT DESCRIPTION Construction of Building A, B, D, E, F & G
SCHOOL ADDRESS 6450 Peralta Place, Riverside, CA	

Whereas, California Education Code Section 39140(c) provides that the governing board of the district, by resolution, must indicate agreement that any school building construction or modernization that exceeds cost and area standards shall be deducted from the allowable building area for which the district makes a subsequent application and would otherwise be determined eligible. This restriction is not subject to waiver or exception.

Now, Therefore, Be it resolved that the undersigned Governing Board Representative of the above-named School District, does hereby agree that the above described school project ☒ is a State project where the total area of the project does not exceed 110 percent of the State allowance, ☒ meets, ☐ does not meet the cost or area standards of Education Code Sections 17700 et seq., and,

Be it further resolved that the calculation of the allowable area for any future requests for capital outlay funding from the State pursuant to Education Code Sections 17700 et seq., or successor, will be reduced by the amount of the excessive construction cost or area if any, without exception.

Attested to by the Secretary/Clerk of the Governing Board on this:

_____ day of _____, _____

signed: _____

NOTE: This resolution is being collected also for the use of the State Allocation Board and the Office of Local Assistance in the performance of their duties and responsibilities. A copy of this resolution will be transmitted to those agencies by the Office of the State Architect.

SCHOOL DISTRICT BOARD OF TRUSTEES RESOLUTION

FOR SCHOOL BUILDING PROJECT COST AND ALLOWABLE AREA STANDARDS

SAB 02 (REV. 02/93)

DIVISION OF THE STATE ARCHITECT FILE AND APPLICATION NUMBER (To be completed by OSA/SSS)	
SCHOOL DISTRICT Jurupa Unified School District	COUNTY Riverside
SCHOOL NAME Rustic Lane Elementary School	PROJECT DESCRIPTION (6) Portables @ (3) Elem. School Sites
SCHOOL ADDRESS 6420 Rustic Lane, Riverside, CA	

Whereas, California Education Code Section 39140(c) provides that the governing board of the district, by resolution, must indicate agreement that any school building construction or modernization that exceeds cost and area standards shall be deducted from the allowable building area for which the district makes a subsequent application and would otherwise be determined eligible. This restriction is not subject to waiver or exception.

Now, Therefore, Be it resolved that the undersigned Governing Board Representative of the above-named School District, does hereby agree that the above described school project ☐ is a State project where the total area of the project does not exceed 110 percent of the State allowance, ☐ meets, ☐ does not meet the cost or area standards of Education Code Sections 17700 et seq., and,

Be it further resolved that the calculation of the allowable area for any future requests for capital outlay funding from the State pursuant to Education Code Sections 17700 et seq., or successor, will be reduced by the amount of the excessive construction cost or area if any, without exception.

Attested to by the Secretary/Clerk of the Governing Board on this:

_____ day of _____, _____.

signed: _____

NOTE: This resolution is being collected also for the use of the State Allocation Board and the Office of Local Assistance in the performance of their duties and responsibilities. A copy of this resolution will be transmitted to those agencies by the Office of the State Architect.

SCHOOL DISTRICT BOARD OF TRUSTEES RESOLUTION FOR SCHOOL BUILDING PROJECT COST AND ALLOWABLE AREA STANDARDS

SAB 02 (REV. 02/93)

STATE ALLOCATION BOARD

DIVISION OF THE STATE ARCHITECT FILE AND APPLICATION NUMBER (To be completed by OSA/SSS)	
SCHOOL DISTRICT Jurupa Unified School District	COUNTY Riverside
SCHOOL NAME Ina Arbuckle Elementary School	PROJECT DESCRIPTION (6) Portables @ (3) Elem. School Sites
SCHOOL ADDRESS 3600 Packard Ave., Riverside, CA	

Whereas, California Education Code Section 39140(c) provides that the governing board of the district, by resolution, must indicate agreement that any school building construction or modernization that exceeds cost and area standards shall be deducted from the allowable building area for which the district makes a subsequent application and would otherwise be determined eligible. This restriction is not subject to waiver or exception.

Now, Therefore, Be it resolved that the undersigned Governing Board Representative of the above-named School District, does hereby agree that the above described school project ☐ is a State project where the total area of the project does not exceed 110 percent of the State allowance, ☐ meets, ☐ does not meet the cost or area standards of Education Code Sections 17700 et seq., and,

Be it further resolved that the calculation of the allowable area for any future requests for capital outlay funding from the State pursuant to Education Code Sections 17700 et seq., or successor, will be reduced by the amount of the excessive construction cost or area if any, without exception.

Attested to by the Secretary/Clerk of the Governing Board on this:

_____ day of _____

signed: _____

NOTE: This resolution is being collected also for the use of the State Allocation Board and the Office of Local Assistance in the performance of their duties and responsibilities. A copy of this resolution will be transmitted to those agencies by the Office of the State Architect.

G
P54

SCHOOL DISTRICT BOARD OF TRUSTEES RESOLUTION

FOR SCHOOL BUILDING PROJECT COST AND ALLOWABLE AREA STANDARDS

SAB 02 (REV. 02/93)

DIVISION OF THE STATE ARCHITECT FILE AND APPLICATION NUMBER (To be completed by OSA/SSS)	
SCHOOL DISTRICT Jurupa Unified School District	COUNTY Riverside
SCHOOL NAME Van Buren Elementary School	PROJECT DESCRIPTION (6) Portables @ (3) Elem. School Sites
SCHOOL ADDRESS 9501 Jurupa Road, Riverside, CA	

Whereas, California Education Code Section 39140(c) provides that the governing board of the district, by resolution, must indicate agreement that any school building construction or modernization that exceeds cost and area standards shall be deducted from the allowable building area for which the district makes a subsequent application and would otherwise be determined eligible. This restriction is not subject to waiver or exception.

Now, Therefore, Be it resolved that the undersigned Governing Board Representative of the above-named School District, does hereby agree that the above described school project ☐ is a State project where the total area of the project does not exceed 110 percent of the State allowance, ☐ meets, ☐ does not meet the cost or area standards of Education Code Sections 17700 et seq., and,

Be it further resolved that the calculation of the allowable area for any future requests for capital outlay funding from the State pursuant to Education Code Sections 17700 et seq., or successor, will be reduced by the amount of the excessive construction cost or area if any, without exception.

Attested to by the Secretary/Clerk of the Governing Board on this:

_____ day of _____, _____.

signed: _____

NOTE: This resolution is being collected also for the use of the State Allocation Board and the Office of Local Assistance in the performance of their duties and responsibilities. A copy of this resolution will be transmitted to those agencies by the Office of the State Architect.

G
PSS

PORTER • STINSON • MILLER
ARCHITECTS / PLANNERS

CHANGE
ORDER 1

PROJECT: Mission Bell School Modernization
Jurupa Unified School District

CHANGE ORDER NUMBER: 1
FINAL CHANGE ORDER

DATE: February 3, 1994

TO: Troxler & Sons Construction
3535 Tapo Street
Simi Valley, CA 93063

O.S.A. #A-55384

You are directed to make the following changes in this Contract:

See attached Change Order Items CO-1.1 through 1.7 and Change Order Drawings COD1 through 5

Not valid until signed by both the Owner and Architect.
Signature of the Contractor indicates his agreement herewith, including any adjustment in the Contract Sum or Contract Time.

The original Contract Sum was	738,700.00
Net change by previously authorized Change Orders	NONE
The Contract Sum prior to this Change Order was	738,700.00
The Contract Sum will be increased/decreased by this Change Order	286.24
The new Contract Sum including this Change Order will be	738,986.24
The Contract Time is extended	78 Days

Authorized:

ARCHITECT

PORTER • STINSON • MILLER
350 West 5th Street, #201-B
San Bernardino, CA 92401

CONTRACTOR

Troxler & Sons Construction
3535 Tapo Street
Simi Valley, CA 93063

OWNER

Jurupa Unified School District
3924 Riverview Drive
Riverside, California 92509

BY David DeGroot

BY [Signature]

BY _____

DATE 2-3-94

DATE 2-20-94

DATE _____

cc: File

H-1
P51

ITEM CO-1.1: **CEILING IN KITCHEN** - The suspended lay-in ceiling in the Kitchen was added by Addendum No. 1, item 1.8. The ceiling has been installed per attached Change Order Drawings COD1 and COD2.

Justification: The Field Representative of D.S.A. has requested details and drawing be prepared for D.S.A. approval because suspended ceiling details were not included in the original approved drawing.

Requested by: The D.S.A. Inspector.

ADDITIVE COST None
TIME EXTENSION None

ITEM CO-1.2: **PENDANT LIGHT FIXTURE MOUNTING** - The Contractor altered the installation of the tandem pendant mount fixtures, per manufacturers requirements.

Justification: The pendant mounted light fixtures could not be installed with a rod at both ends when installed in tandem. The light fixtures were installed per attached drawing COD3.

Requested by: The Contractor.

ADDITIVE COST None
TIME EXTENSION 7 days

ITEM CO-1.3: **ALTERATION TO WELDING ON BEAM AT BUILDING "B"** - Change the welding on column at Building "B", per attached Change Order Drawing COD4.

Justification: Change Order Drawing per "as-built" condition. Original welding design did not have adequate access to perform the welding

Requested by: The Structural Engineer and Contractor.

ADDITIVE COST None
TIME EXTENSION 5 Days

H-1
B2

ITEM CO-1.4: **ALTERATION TO ROOF CURB FOR MECHANICAL EQUIPMENT -**
Alteration to roof curb per attached clarification drawing CD-7,
submitted to D.S.A. on August 26, 1993.

Justification: The Mechanical Equipment was changed by addendum to a high
energy efficient Carrier Unit during the bidding process. The holes
in the roof had to be altered to be under the unit instead of off to the
side for the economizers. The structural supports at the roof
openings were altered for the mechanical equipment.

Requested by: The Architect.

ADDITIVE COST \$286.24
TIME EXTENSION 7 Days

ITEM CO-1.5: **ASBESTOS ABATEMENT -** The start up date for construction was
delayed ten (10) days due to asbestos abatement by another
Contractor with the District.

Justification: The Contractor was delayed 10 days from moving on to the school
site after the contract began, due to the asbestos abatements still
taking place.

Requested by: The Architect and Contractor.

ADDITIVE COST None
TIME EXTENSION 10 Days

ITEM CO-1.6: **SEISMIC BRACING OF PENDANT LIGHT FIXTURES -** Provide
1/8" cables to stabilize pendant mounted fixtures, per code.

Justification: The code and one electrical detail require seismic bracing on the
pendant mounted light fixtures. The location and attachment were
not included in the contract documents. See attached change order
drawing COD5 for location and attachment detail of seismic cable.

Requested by: The D.S.A. Inspector.

ADDITIVE COST None
TIME EXTENSION 21 Days (3 weekends)



ITEM CO-1.7: **TIME EXTENSION** - Time extension to complete punch list items.

Justification: The District took beneficial occupancy three days before the contract was up. The Contractor still had punch list items to do and the Energy Management System could not operate until the District brought in a dedicated phone line. The Contractor was limited to weekends to perform all work.

Requested by: The Architect and District.

ADDITIVE COST None
TIME EXTENSION 28 Days (4 weekends)

TOTAL ADDITIVE COST \$286.24
TOTAL TIME EXTENSION 78 Days

H-1
P34

Jurupa Unified School District

Personnel Report #16

March 21, 1994

CERTIFICATED PERSONNEL

Partial Assignment Authorizations

To teach subject(s) not listed on base credential under authorization of Education Code Section 44865: Deanna Long - Adult Education (ESL)

Extra Compensation Assignment

Adult Education; 1993-94 school year; to serve as an instructor; appropriate hourly rate of pay.

Deanna Long

Bilingual Education; Title VII Advisory Council Meeting; March 2, 1994; not to exceed five (5) hours total; appropriate hourly rate of pay.

Gloria Cabrera
Susan Rhine

Martha Molina
Susan Maturino

Esther Askew

Education Services; to prepare for Federal Review and program start up; January 1, 1994 through June 30, 1994; not to exceed 80 hours total; appropriate hourly rate of pay.

Virginia Schanz

Home Teaching; 1993-94 school year; appropriate hourly rate of pay.

LeeAnne Reynolds

Instructional Services; attend inservice on math manipulatives; March 3, 1994; not to exceed one (1) hour total; appropriate hourly rate of pay.

Rhonda Batterton
Shannon Sears

Dani Hart
Lori Smith

Heidi Orr

Instructional Services; attend inservice on computer software; March 8, 1994; not to exceed one (1) hour each; appropriate hourly rate of pay.

Monette Stewart
Josefina Mendoza
Luis Hernandez
Esther Askew
Andrea Roe
Martha Molina
Sandra Garza

Victoria Mendoza
Janet Garcia-Hudson
Melody Flores
Lourdes Ruelas
Gloria Cabrera
Duan Kellum
Beverly Rosten

Dolores Hernandez
Susan Rhine
Barbara Busalacchi
Susan Maturino
Deanna Long
Matthew Nagle

CERTIFICATED PERSONNEL (Continued)Extra Compensation Assignment (Continued)

Pacific Avenue Elementary; after school prevention teacher; January 25, 1994 through February 15, 1994; appropriate hourly rate of pay.

Trenae Vega

Pedley Elementary; 1993-94 school year; after school sports and recreation program; appropriate hourly rate of pay.

Betty Hall
Dani Hart

Barbara Adcock
Lisa Swica

Rhonda Batterton

Van Buren Elementary; after school program to improve reading skills; January 13, 1994 through February 9, 1994; not to exceed ten (10) hours total; appropriate hourly rate of pay.

Shelley Edwards

Jurupa Middle School; assist in training at-risk students; March 7-21, 1994; not to exceed six (6) hours each; appropriate hourly rate of pay.

Mike Goltry

Paula Nicolini

Terese Pisarik

Jurupa Valley High School Athletics; 1993-94 school year; appropriate seasonal rate.

Paul Kumamoto	Head Baseball Coach
Junji Kumamoto	Assistant Baseball Coach
Maurice Roberson	Assistant Baseball Coach
Mark Van Meter	Assistant Baseball Coach
Ric Slagle	Assistant Baseball Coach
Chuck Armenta	Assistant Baseball Coach
Jason Taylor	Head Golf Coach
Ozzie Hairston	Assistant Golf Coach
Jimmy Rodriguez	Head Softball Coach
Todd Moerer	Assistant Softball Coach
Stephanie Timar	Assistant Softball Coach
Jerry Bowman	Assistant Softball Coach
Hugo Nevarez	Assistant Softball Coach
Cheto Cabrillo	Assistant Softball Coach
Steve Kaiser	Assistant Softball Coach
Will Murray	Head Swimming Coach
Nate Hass	Assistant Swimming Coach
Kelly Dodd	Assistant Swimming Coach
Rhonda Rice	Assistant Swimming Coach
Larry Jansen	Head Boys Tennis Coach
Kathy Norwood	Head Track Coach

Rubidoux High School Athletics; 1993-94 school year; appropriate seasonal rate.

Ray Marisnick	Head Baseball Coach
Jason Dohl	Assistant Baseball Coach
Al Martinez	Head Softball Coach
Harrison Cole	Assistant Softball Coach
Ray Johnson	Assistant Softball Coach

CERTIFICATED PERSONNEL (Continued)Extra Compensation Assignment (Continued)

Rubidoux High School Athletics: 1993-94 school year; appropriate seasonal rate.

Dick Slivka	Head Badminton Coach
Brian Hayden	Head Swimming Coach
Virgila Hayden	Assistant Swimming Coach
Ginger Hayden	Assistant Swimming Coach
Richard Torbert	Co-Track Coach
Susan Gaustad	Co-Track Coach
Sam Gee	Assistant Track Coach
Doug Torbert	Assistant Track Coach

Rubidoux High; introduction to thematic teaching; January 12-13, 1994; not to exceed 8.1 hours total; appropriate hourly rate of pay.

Mike Dohr

Rubidoux High; to made a presentation to the UCR Teacher Education Program; January 12, 1994; not to exceed 4.05 hours total; appropriate hourly rate of pay.

Ellen Finan

Substitute Assignment

Teacher	Mr. Frank Dona 3670 Donald Avenue Riverside, CA 92503	As needed 30-Day Emergency Permit
Teacher	Mr. Matthew Dunphy 1510 Highridge Riverside, CA 92506	As needed 30-Day Emergency Permit
Teacher	Ms. Colleen Massey 6476 Riverside Ave. #27 Riverside, CA 92506	As needed 30-Day Emergency Permit
Teacher	Ms. Diane Montgomery 5307 Rutland Avenue Riverside, CA 92503	As needed 30-Day Emergency Permit
Teacher	Mr. Shawn Reagan 21903 Spring Crest Rd. Moreno Valley, CA 92557	As needed 30-Day Emergency Permit
Teacher	Mr. Charles Rohm Jr. 7861 Live Oak Drive Riverside, CA 92509	As needed 30-Day Emergency Permit
Teacher	Mr. Nathan Schwartz 22666 Ashford Circle Moreno Valley, CA 92557	As needed 30-Day Emergency Permit

CERTIFICATED PERSONNEL (Continued)Substitute Assignment (Continued)

Teacher	Mr. Robert Shelley 4220 Jones Avenue Riverside, CA 92505	As needed Designated Subjects: Vocational Education-Drafting Credential
Teacher	Ms. Melissa Ybarra 8858 Main Street Pedley, CA 92509	As needed Single Subject-Social Science Credential

Change of Assignment

Teacher	Ms. Irene Espinoza	Effective July 1, 1994 From 100% to 50% status
From Teacher on Special Assignment to Classroom Teacher	Ms. Mary Blevins	Effective July 1, 1994 From 50% to 100% status

Student Teaching Assignment

Assigned from University of Redlands for the spring quarter 1994:

<u>Name</u>	<u>Master Teacher</u>	<u>Site</u>
Catherine Sieberling	Rebecca Kallinger	Stone Avenue Elementary

Return from Leave of Absence/Change of Assignment

Teacher	Ms. Sheryl Beamer	Effective July 1, 1994 60% status
---------	-------------------	--------------------------------------

Leave of Absence

Teacher	Ms. Karen Cox-Vlahos 7256 Linares Avenue Riverside, CA 92509	Unpaid Special Leave effective August 29, 1994 through June 16, 1995 without compensation, health and welfare benefits or increment advancement.
Teacher	Ms. Cynthia Davis 3410F La Sierra #322 Riverside, CA 92504	Unpaid Special Leave effective July 1, 1994 through June 30, 1995 without compensation, health and welfare benefits or increment advancement.
Teacher	Ms. Stephanie Hammervold 11691 Pettit Street Moreno Valley, CA 92555	Unpaid Special Leave effective August 29, 1994 through June 16, 1995 without compensation, health and welfare benefits or increment advancement.

CERTIFICATED PERSONNEL (Continued)Leave of Absence (Continued)

Language, Speech & Hearing Specialist	Ms. Lidewy Honcharik 30526 Laramie Redlands, CA 92374	Maternity Leave effective March 16, 1994 through May 11, 1994 with use of sick leave benefits.
Resource Teacher	Ms. Paige Polcene 20404 Silk Tassel Rd. Riverside, CA 92508	Unpaid Special Leave effective July 1, 1994 through June 30, 1995 without compensation, health and welfare benefits or increment advancement.
Teacher	Mr. Richard Sevaly 7115 Hawarden Dr. Riverside, CA 92506	Unpaid Special Leave effective July 1, 1994 through June 30, 1995 without compensation, health and welfare benefits or increment advancement.
Teacher	Ms. Laurie Snyder 6821 Oakhills Rd. Phelan, CA 92371	Unpaid Special Leave effective February 23, 1994 through June 30, 1994 without compensation, health and welfare benefits or increment advancement.
Teacher	Ms. Elizabeth Yeager 2390 Arroyo Drive Riverside, CA 92506	Unpaid Special Leave effective July 1, 1994 through June 30, 1995 without compensation, health and welfare benefits or increment advancement.

CLASSIFIED PERSONNELRegular Assignment

Instructional Aide	Ms. Gillian Coffey 800 Libby Drive Riverside, CA 92507	Effective February 28, 1994 Work Year E1 (3 hours per day)
Instructional Aide	Ms. Virginia Valenzuela 11456 Geyser Drive Mira Loma, CA 91752	Effective February 28, 1994 Work Year E1 (3 hours per day)

Short-Term/Extra Work

Glen Avon Elementary; to provide supplementary materials for school improvement; February 15, 1994; not to exceed 10 hours total; appropriate hourly rate of pay.

Elem. Media Ctr. Clerk Mary Forand

J1
BS

CLASSIFIED PERSONNEL (Continued)Short-Term/Extra Work (Continued)

Rubidoux High School; Parent Night; February 23, 1994; not to exceed two (2) hours total; appropriate hourly rate of pay.

Campus Supervisor Paul Avila

Substitute Assignment

Custodian Mr. Ruben Alaniz, Jr. As needed
45 Sanriva Street
Riverside, CA 92507

Bilingual Language Ms. Pamela Juarez As needed
Tutor 4860 Dodd Street
Mira Loma, CA 91752

Cafeteria Assistant I Ms. Mabel Philpott As needed
3941 Mennes Avenue
Riverside, CA 92509

Leave of Absence

Cafeteria Assistant II Ms. Judy Lester Unpaid Special Leave
P.O. Box 105 effective March 18, 1994 through
Oak Grove, Arkansas 72660 June 30, 1994 without compensa-
tion, health and welfare
benefits, increment advancement
or the accrual of seniority for
layoff or reduction in force
purposes.

Termination

Cafeteria Assistant I Ms. Patsy Tilghman Effective March 4, 1994
(Probationary) 6887 Jurupa Rd.
Riverside, CA 92509

Resignation

Activity Supervisor Mr. Viktor Fullerton Effective March 8, 1994
6085 Bain Street
Mira Loma, Ca 91752

Activity Supervisor Ms. Sue Ann Gutierrez Effective March 25, 1994
8667 Clearview Place
Riverside, CA 92509

OTHER PERSONNELShort-Term Assignment

Adult Education; to serve as an Adult Education Computer Assistant; March 2, 1994 through April 6, 1994; not to exceed three (3) hours per week; \$6.00 per hour.

Computer Assistant Manu Lewis

J-1
P56

OTHER PERSONNEL (Continued)

Short-Term Assignment (Continued)

Education Support Services; to serve as a peak load clerical aide; March 2-31, 1994; not to exceed four (4) hours per day; \$8.23 per hour.

Peak Load Clerical Terri Bierwirth

Granite Hill Elementary; to serve as a Chapter I Reading Tutor; January 24, 1994 through May 20, 1994; not to exceed 53 hours each; \$10.00 per hour.

Chapter I Read. Tutor Lorena Graves
Chapter I Read. Tutor Ivonne Irving
Chapter I Read. Tutor Joan Jardine

Ina Arbuckle Elementary; to serve as a Language Arts Tutor; March 9, 1994 through May 31, 1994; not to exceed 14 hours total; \$8.09 per hour.

Language Arts Tutor Diane Tudge

Sunnyslope Elementary; to serve as a Project Resource Teacher Assistant; February 22, 1994 through June 17, 1994; not to exceed ten (10) hours per week; \$8.23 per hour.

Proj. Res. Tch. Asst. Theresa Schumm

Van Buren Elementary; to serve as a Language Facilitator; January 1, 1994 through June 30, 1994; not to exceed 275 hours total; \$18.00 per hour.

Language Facilitator Pete Villalobos

Van Buren Elementary; to serve as a Language Facilitator; November 8, 1993 through December 13, 1993; not to exceed six (6) hours total; \$8.74 per hour.

Language Facilitator Louis Bautista


Jurupa Valley High; to serve as a Field Striping Attendant; March 7, 1994 through May 12, 1994; not to exceed 70½ hours total; \$9.18 per hour.

Field Striping Attend. Chet Caballero

Rubidoux High; to serve as a Field Striping Attendant; February 26, 1994 through May 12, 1994; not to exceed 87½ hours total; \$9.18 per hour.

Field Striping Attend. Darel Hansen

The above actions are recommended for approval:


Kent Campbell, Assistant Superintendent-Personnel Services

TITLE 5, CALIFORNIA CODE OF REGULATIONS

5593. Temporary Athletic Team Coach Qualifications and Competencies

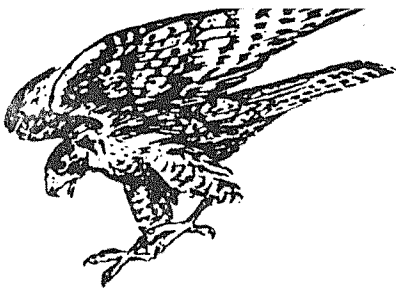
This section applies to any person serving at any grade level as a temporary athletic team coach.

- (a) The district shall determine whether a temporary athletic team coach is knowledgeable and competent in the areas of:
 - (1) Care and prevention of athletic injuries, basic first aid, and emergency procedures;
 - (2) Coaching techniques;
 - (3) Rules and regulations in the athletic activity being coached; and
 - (4) Child or adolescent psychology, whichever is appropriate to the grade level of the involved sports activity.
- (b) The district shall establish a temporary athletic team coach's qualifications in each of the below specified four competency areas:
 - (1) Care and prevention of athletic injuries, basic sports injury first aid, and emergency procedures as evidenced by one or more of the following:
 - (A) Completion of a college-level course in the care and prevention of athletic injuries and possession of a valid cardiopulmonary resuscitation (CPR) card; or
 - (B) A valid sports injury certificate or first aid card, and a valid cardiopulmonary resuscitation (CPR) card; or
 - (C) A valid Emergency Medical Technician (EMT) I or II card; or
 - (D) A valid trainer's certification issued by the National or California Athletic Trainers' Association (NATA/CATA); or
 - (E) The person has had practical experience under the supervision of an athletic coach or trainer, or has assisted in team athletic training and conditioning, and has both valid CPR and first aid cards.

Title 5, California Code of Regulations

- (2) Coaching theory and techniques in the sport or game being coached, as evidenced by one or more of the following:
 - (A) Completion of a college course in coaching theory and techniques; or
 - (B) In-service programs arranged by a school district or a county office of education; or
 - (C) Prior service as a student coach or assistant athletic coach in the sport or game being coached; or
 - (D) Prior coaching in community youth athletic programs in the sport to be coached; or
 - (E) Prior participation in organized competitive athletics at high school level or above in the sport to be coached.
- (3) Knowledge of the rules and regulations pertaining to the sport or game being coached, the league rules and, at the high school level, regulations of the California Interscholastic Federation.
- (4) Child or adolescent psychology as it relates to sports participation as evidenced by one or more of the following:
 - (A) Completion of a college-level course in child psychology for elementary school positions and adolescent or sports psychology for secondary school positions; or
 - (B) Completion of a seminar or workshop on human growth and development of youth; or
 - (C) Prior active involvement with youth in a school or community sports program.
- (c) The school district superintendent may waive compliance with any one or more of the competencies described in subsection (a) provided that the person is enrolled in a program leading to acquisition of a competency. Until the competencies are met, the prospective coach shall serve under the immediate supervision of a fully qualified temporary athletic team coach.

NOTE: Authority cited: Education Code Sections 33031, 35160 and 35179.5.
Reference: Education Code Sections 33352 and 35179.5.



RUBIDOUX HIGH SCHOOL

Don Vail
Principal
360-2711

Ben Bunz
Assistant Principal
Curriculum & Instruction
360-2863

Bob Gray
Assistant Principal
Student Discipline/
Attendance, Counseling &
Operations
360-2775

Rick Stangle
Assistant Principal
Student Support,
ASB & Athletics
360-2863

DATE: September 16, 1993
TO: Kent Campbell, Assistant Superintendent, Personnel Services
FROM: Rick Stangle, Assistant Principal/Student Support, ASB/Athletics *RS*
SUBJECT: **Athletic Coach Certification**

Please be advised that the listed members of the Rubidoux High athletic coaching staff have satisfactorily completed the requirement for certification in compliance with Title 5, California Code of Regulations (CCR), Section 5594 for the 1993/94 school year.

Current certificated staff members for fall athletics include:

Football	Head Coach Assistants	Wayne Cochrun Charles Meyerett Doug Torbert Pat Fagan Darel Hansen Pat Thompson (V) Jeff Huerta (V) Scott Belli (V)	Rich Torbert Harrison Cole Larry Hilsabeck Ed Luna (V) Jim Rose (V) Ron Belli (V)
Cross Country	Head Coach Assistant	Sam Gee Jay Hammer (V)	
Girls Tennis	Coach	Robby Watson (V)	
Girls Volleyball	Head Coach Assistants	Vince Rosse Victor Centeno (V) Monique Girton (V)	

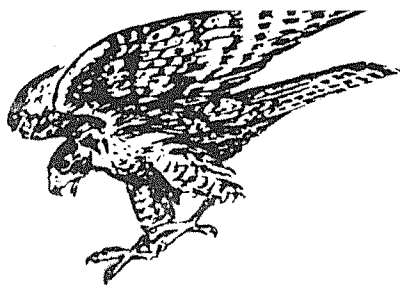
(V) - Denotes vounteer

RS/dsf

c: Ms. Benita Roberts, Superintendent
Don Vail, Principal
Tina Erickson, Athletic Trainer
Payroll
Personnel

4250 Opal Street, Riverside, California 92509
909/360-2821

J-2
p93



RUBIDOUX HIGH SCHOOL

Don Vail
Principal
360-2711

Ben Bunz
Assistant Principal
Curriculum & Instruction
360-2863

Bob Gray
Assistant Principal
Student Discipline/
Attendance, Counseling &
Operations
360-2775

Rick Stangle
Assistant Principal
Student Support,
ASB & Athletics
360-2863

DATE: November 18, 1993
TO: Kent Campbell, Assistant Superintendent, Personnel Services
FROM: Rick Stangle, Assistant Principal/Student Support, ASB/Athletics *rs*
SUBJECT: **Athletic Coach Certification**

Please be advised that the listed members of the Rubidoux High athletic coaching staff have satisfactorily completed the requirement for certification in compliance with Title 5, California Code of Regulations (CCR), Section 5594 for the 1993/94 school year.

Current certificated staff members for winter athletics include:

Boys Basketball	Head Coach Assistants	Dale Johnson Mike Erickson Troy Adams Rob Liddle (V) Harrison Cole (V) Annmarie Weaver (V)
Girls Basketball	Head Coach Assistants	Susan Gaustad Beau Bridges Gene Erickson
Boys Soccer	Coach	Bill Suhar (V)
Girls Soccer	Coach	Roy Conner (V)
Wrestling	Head Coach Assistant	Armando Muniz Verne Laurizen

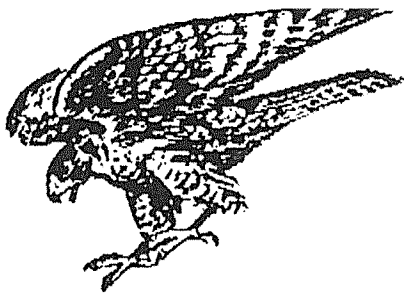
(V) - Denotes vounteer

RS/dsf

c: Ms. Benita Roberts, Superintendent
Don Vail, Principal
Tina Erickson, Athletic Trainer
Payroll
Personnel

4250 Opal Street, Riverside, California 92509
909/360-2821

J-2
BY



RUBIDOUX HIGH SCHOOL

Don Vail
Principal
360-2711

Ben Bunz
Assistant Principal
Curriculum & Instruction
360-2863

Bob Gray
Assistant Principal
Student Discipline/
Attendance, Counseling &
Operations
360-2775

Rick Stangle
Assistant Principal
Student Support,
ASB & Athletics
360-2863

DATE: February 28, 1994
TO: Kent Campbell, Assistant Superintendent, Personnel Services
FROM: Rick Stangle, Assistant Principal/Student Support, ASB/Athletics
SUBJECT: Athletic Coach Certification - Spring

Please be advised that the listed members of the Rubidoux High athletic coaching staff have satisfactorily completed the requirement for certification in compliance with Title 5, California Code of Regulations (CCR), Section 5593 for the 1993/94 school year.

Current staff members for spring athletics include:

Baseball	Head Coach Assistants	Ray Marisnick Gene Erickson (V) Steve Yanasheski (V) Jason Dohl Kevin White (V)
Softball	Head Coach Assistants	Al Martinez Harrison Cole Ray Johnson John McGinty (V)
Badminton	Head Coach	Dick Silvka
Swim	Head Coach Assistants	Brian Hayden Virgil Hayden Ginger Hayden
Boys Tennis	Head Coach Assistant	Tim Jones (V) Robby Watson (V)
Track	Co-Coaches Assistants	Rich Torbert Susan Gaustad Sam Gee Doug Torbert Jeff Jacobs (V)
Golf	Head Coach	Charles Meyerett (V)

(V) - Denotes volunteer

RS/dst

c: Ms. Benita Roberts, Superintendent
Tina Erickson, Athletic Trainer
Personnel

Don Vail, Principal
Payroll

4250 Opal Street, Riverside, California 92509
909/360-2821

J-2
Pg 5

JURUPA UNIFIED SCHOOL DISTRICT

JURUPA VALLEY HIGH SCHOOL 10551 Bellegrave Avenue Mira Loma, CA 91752 (909) 360-2600 Fax # (909) 360-2612

DATE: August 24, 1993

TO: Kent Campbell, Assistant Superintendent,
Personnel Services

FROM: Rex Moore, Assistant Principal, Athletics, Activities
and Operations

SUBJECT: **ATHLETIC COACH CERTIFICATION**

Please be advised that the listed members of the Jurupa Valley High School athletic coaching staff have satisfactorily completed the requirement for certification in compliance with Title 5, California Code of Regulations (CCR), Section 5594 for the 1993 - 94 school year.

Current certificated staff members for fall athletics include:

Football	Tim Titus	Head Coach
Varsity and J.V.	Chuck Armenta	Assistant
	Bob Green	Assistant
	Steve Sigloch	Assistant
	Geoff Holt	Assistant
	Kevin Haugh	Assistant
	Hugo Navarrez	Assistant
	Rick Slagle	Assistant
	Kelly Dodd	Assistant
Freshman	John Martin	Head Coach
	Roy Wilson	Assistant
Cross Country	Jimmy Rodriguez	Head Coach
Girls Tennis	Keith King	Head Coach
Volleyball	Stephanie Timar	Head Coach
	Rhonda Rice	Assistant
	Gina Medrano	Volunteer
Water Polo	Nate Hass	Head Coach
	Will Murray	Assistant

cc: Benita Roberts, Superintendent
Alan Young, Principal
Lourdes Padilla, Athletic Trainer
Payroll
Personnel ✓

J-2
pg 6

JURUPA UNIFIED SCHOOL DISTRICT

JURUPA VALLEY HIGH SCHOOL 10551 Bellegrove Avenue Mira Loma, CA 91752 (909) 360-2600 Fax # (909) 360-2612

DATE: February 23, 1994

TO: Kent Campbell, Assistant Superintendent,
Personnel Services

FROM: Rex Moore, Assistant Principal, Athletics, Activities
and Operations

SUBJECT: ATHLETIC COACH CERTIFICATION

Please be advised that the listed members of the Jurupa Valley High School athletic coaching staff have satisfactorily completed the requirement for certification in compliance with Title 5, California Code of Regulations (CCR), Section 5593 for the 1993 - 1994 school year.

Current certificated staff members for spring athletics include:

<u>Baseball</u>	Paul Kumamoto	Head Coach
	Junji Kumamoto	Assistant
	Maurice Roberson	Assistant
	Mark Van Meter	Assistant
	Ric Slagle	Assistant
	Chuck Armenta	Assistant
<u>Golf</u>	Jason Taylor	Head Coach
	Ozzie Halrston	Assistant
<u>Softball</u>	Jimmy Rodriguez	Head Coach
	Todd Moerer	Assistant
	Stephanie Timar	Assistant
	Jerry Bowman	Assistant
	Hugo Nevarez	Assistant
	Cheto Cabrillo	Assistant
	Steve Kaiser	Assistant
<u>Swimming</u>	Will Murray	Head Coach
	Nate Hoss	Assistant
	Kelly Dodd	Assistant
	Rhonda Rice	Assistant
<u>Boys Tennis</u>	Larry Jansen	Head Coach

RM/itr
C.007.079

cc: Benita Roberts, Superintendent
Alan Young, Principal
Lourdes Padilla, Athletic Trainer
Payroll

J-2
Pg 7

CERTIFICATION 1993-1994
TEMPORARY ATHLETIC TEAM COACHES

TO STATE BOARD OF EDUCATION:

Title 5, California Code of Regulations, Section 5594, requires:

By April 1 of each year, each local governing school board shall certify to the State Board of Education that the provisions of Section 5593 have been met.

LOCAL SCHOOL BOARD CERTIFICATION:

I hereby certify the school district has met the conditions set forth in Title 5, Sections 5593 and 5594.

President

Board of Trustees

Date

Return to: State Board of Education
Department of Education
721 Capitol Mall, Room 532
Sacramento, CA 95814

J-2
P38

RIVERSIDE REGIONAL EDUCATION DATA CENTER

REPORT: APS/APSS50/01
 RUN DATE: 03/08/94
 PAGE: 1

COUNTY: 33 RIVERSIDE
 DISTRICT: 46 JURUPA UNIFIED

REPORT OF PURCHASES

02/18/94 - 03/04/94
 PURCHASES OVER \$200

REF	FUND	LOC/SITE	PROGRAM	VENDOR	DESCRIPTION	
PURCHASE ORDERS TO BE RATIFIED						
P78568	100	178 00	DISTRICT ADMINISTRATION	XEROX CORP. - SERVICE REPAIR	EC-COPIER REPAIR	540.12
P78587	100	178 00	DISTRICT ADMINISTRATION	EASTMAN KODAK COMPANY	EC-OFFICE SUPPLIES	231.02
P78828	100	196 00	FINE ARTS - DRAMA	H & L CHARTER CO., INC.	RHS-FIELD TRIP	340.00
P78884	100	178 00	NON SPECIFIC	NATIONWIDE PAPERS	WHSE-STOCK	17,121.05
P78890	100	178 00	PLANT OPERATIONS	C.R. JAESCHKE, INC.	MAINT-REPAIR GROUNDS EQUIPMENT	804.93
P78895	100	178 00	NON SPECIFIC	STATER BROTHERS	WHSE-STOCK	356.87
P78902	100	178 00	FACILITIES	R. MARTINEZ AND SON	MAINT-LOAD AND MOVE LOADS OF DIRT	1,620.00
P78979	100	178 00	DISTRICT WAREHOUSE	WAXIE SANITARY SUP.	WHSE-STOCK	6,113.30
P78980	100	178 00	DISTRICT WAREHOUSE	SCOTT ELECTRIC-SPEC. LAMP D	WHSE-STOCK	359.67
P78981	100	178 00	DISTRICT WAREHOUSE	EASTMAN PRODUCTS	WHSE-STOCK	982.68
P78982	100	178 00	DISTRICT WAREHOUSE	SOUTHWEST SCHOOL SUPPLY	WHSE-STOCK	4,930.10
P78983	100	178 00	DISTRICT WAREHOUSE	GORDON'S INC.	WHSE-STOCK	1,499.23
P78984	100	178 00	DISTRICT WAREHOUSE	IROQUOIS PRODUCTS	WHSE-STOCK	469.90
P78986	100	178 00	SELF-CONTAINED CLASSROOM	RIVERSIDE CO. OFFICE OF EDU	EC-REGISTRATION FEES	225.00
P79040	100	178 00	DISTRICT ADMINISTRATION	PITNEY BOWES INC.	EC-MAIL MACHINE M/A	416.00
P79057	100	178 00	DISTRICT ADMINISTRATION	MULTIGRAPHICS(DIV OF AM INT	PRINT SHOP-SUPPLIES	682.70
P79066	100	178 00	PLANT OPERATIONS	WESTERN EXTERMINATOR COMPAN	MAINT-TERMITE WORK	625.00
P79067	100	178 00	DISTRICT WAREHOUSE	ZANER-BLOSER INC	WHSE-STOCK	792.56
P79070	100	178 00	PLANT OPERATIONS	BABCOCK & SONS, INC. (EDWA	MAINT-REPAIRS	596.00
P79074	100	178 00	PLANT OPERATIONS	CONTRACTORS DEQUIPMENT COMP	MAINT-GROUNDS EQUIPMENT REPAIR	1,657.60
P79086	100	000 00	SELF-CONTAINED CLASSROOM	ELEMENTARY SPECIALTIES	IH-INSTRUCTIONAL MATERIALS	763.71
P79107	100	197 00	VOC ED-TRADE & INDUSTRIAL	MACBEATH HARDWOOD	JVHS-INSTRUCTIONAL MATERIALS	1,403.98
P79109	100	196 00	GENERAL EDUCATION - SECONDARY	H & L CHARTER CO., INC.	RHS-FIELD TRIP	2,049.30
P79121	100	178 00	DISTRICT ADMINISTRATION	SHAMROCK EQUIPMENT CO.	EC-OFFICE FURNITURE	1,017.70

K-1
 351

RIVERSIDE REGIONAL EDUCATION DATA CENTER

REPORT: APS/APSS50/01
RUN DATE: 03/08/94
PAGE: 2

COUNTY: 33 RIVERSIDE
DISTRICT: 46 JURUPA UNIFIED

REPORT OF PURCHASES
02/19/94 - 03/04/94
PURCHASES OVER \$200

REF	FUND	LOC/SITE	PROGRAM	VENDOR	PURCHASE ORDERS TO BE RATIFIED	DESCRIPTION	
P79132	100	184 00	SELF-CONTAINED CLASSROOM	RIVERSIDE PUBLISHING CO.	RL-INSTRUCTIONAL MATERIALS		210.11
P79138	100	196 00	SELF-CONTAINED CLASSROOM	HOBBY SHACK	VB-OPEN PO-INSTRUCTIONAL MATERIALS		250.00
P79142	100	190 00	PHYSICAL EDUCATION	GOPHER SPORT	JMS-INSTRUCTIONAL MATERIALS		1,399.21
P79152	100	196 00	INDEPENDENT STUDY	RIVERSIDE CO. OFFICE OF EDU	IS-INSTRUCTIONAL MATERIALS		466.25
P79164	100	178 00	GUIDANCE & COUNSELING	PAR	EC-SUPPLIES		1,056.06
P79172	100	178 00	HEALTH	SCHODL HEALTH SUPPLY CO	EC-MEDICAL SUPPLIES		285.27
P79174	100	178 00	FACILITIES	RIGHT WAY	MAINT-EQUIPMENT RENTAL		340.68
P79175	100	178 00	PLANT OPERATIONS	AMERICAN FIRE SAFETY	MAINT-SUPPLIES		400.18
P79199	100	000 00	SELF-CONTAINED CLASSROOM	COMPUTERLAND	VB-OPEN PO-INSTRUCTIONAL MATERIALS		250.00
P79204	100	196 00	INDEPENDENT STUDY	GLOBE BOOK CO-SIMON & SCHUS	IS-INSTRUCTIONAL MATERIALS		295.67
P79206	100	190 00	MATHEMATICS	ROBERT JACOBSON: DESIGN	JMS-INSTRUCTIONAL MATERIALS		226.28
P79207	100	197 00	SOCIAL SCIENCE	SCHOLASTIC MAGAZINES	JVHS-SUBSCRIPTION		278.00
P79255	100	196 00	MATHEMATICS	CALCULATORS, INC.	RHS-CALCULATORS		732.70
P79256	100	178 00	FINE ARTS-MUSIC	ADVANCED TECHNOLOGIES	EC-COMPUTER EQUIPMENT		1,007.43
P79257	100	178 00	DISTRICT ADMINISTRATION	PRESS ENTERPRISE COMPANY	EC-PUBLICATION FOR LEGAL ADS		500.00

						FUND TOTAL	53,296.26
						TOTAL NUMBER OF PURCHASE ORDERS	39
P79035	101	178 00	MENTOR TEACHERS PROGRAM-ADMIN	COMPUTERLAND OF UPLAND	EC-COMPUTER EQUIPMENT		408.37
P79050	101	185 00	S.I.P. (SCHOOL IMPROVEMENT PR	MCDUGAL LITTELL AND CO	TS-INSTRUCTIONAL MATERIALS		244.38
P79054	101	179 00	S.I.P. (SCHOOL IMPROVEMENT PR	MC INTOSH, JOHN	EC-GA-INSTALL COMPUTER MODEMS		1,042.95
P79059	101	183 00	S.I.P. (SCHOOL IMPROVEMENT PR	MAC CONNECTION	PED-EC-MHS-INSTRUCTIONAL MATERIALS		218.62
P79060	101	187 00	E.C.I.A. CHAPTER 1	STAPLES	WR-OPEN PO-INSTRUCTIONAL MATERIALS		300.00
P79082	101	179 00	EISS-EARLY INTERVENTION/SCHOO	HOOVER'S BROTHERS, INC.	GA-EASELS		598.63

32

RIVERSIDE REGIONAL EDUCATION DATA CENTER

REPORT: APS/APS550/01
 RUN DATE: 03/08/94
 PAGE: 3

COUNTY: 33 RIVERSIDE
 DISTRICT: 46 JURUPA UNIFIED

REPORT OF PURCHASES

02/18/94 - 03/04/94
 PURCHASES OVER \$200

REF	FUND	LOC/SITE	PROGRAM	VENDOR	PURCHASE ORDERS TO BE RATIFIED	DESCRIPTION	
P79083	101	173 00	E.C.I.A. CHAPTER 1	HOOVER'S BROTHERS, INC.		GH-INSTRUCTIONAL MATERIALS	332.07
P79089	101	189 00	S.I.P. (SCHOOL IMPROVEMENT PR	APPLE COMPUTER-SUPPORT CENT		IH-COMPUTER EQUIPMENT	1,877.01
P79094	101	184 00	E.C.I.A. CHAPTER 1	LITTLE RED SCHOOL HOUSE		RL-OPEN PO-INSTRUCTIONAL MATERIALS	250.00
P79095	101	184 00	S.I.P. (SCHOOL IMPROVEMENT PR	S & S ELECTRIC		RL-BUILDING REPAIRS	3,190.00
P79097	101	184 00	E.C.I.A. CHAPTER 1	IMED		RL-CASSETTE RECORDERS	835.06
P79098	101	184 00	S.I.P. (SCHOOL IMPROVEMENT PR	FOLLETT LIBRARY BOOK CO.		RL-BOOKS	953.31
P79099	101	184 00	E.C.I.A. CHAPTER 1	IMED		RL-LISTENING CENTERS	484.88
P79102	101	186 00	DRUG ABUSE EDUCATION & PREVEN	KEN'S SPORTING GOODS		VB-INSTRUCTIONAL MATERIALS	293.35
P79103	101	187 00	E.C.I.A. CHAPTER 1	APPLE COMPUTER-SUPPORT CENT		WR-COMPUTER EQUIPMENT	10,966.80
P79120	101	178 00	MENTOR TEACHER PROGRAM	HANSON OFFICE PRODUCTS		EC-OFFICE SUPPLIES	278.32
P79125	101	187 00	E.C.I.A. CHAPTER 1	VON'S MARKET (LIMONITE AVE)		WR-OPEN PO-SUPPLIES	300.00
P79129	101	183 00	S.I.P. (SCHOOL IMPROVEMENT PR	CALICO BLUE RIBBON AWARDS		PED-OPEN PO-INSTRUCTIONAL MATERIALS	500.00
P79131	101	184 00	E.C.I.A. CHAPTER 1	STECK-VAUGHN CO (800)531-50		RL-INSTRUCTIONAL MATERIALS	1,426.02
P79136	101	186 00	E.C.I.A. CHAPTER 1	MCDUGAL LITTELL AND CO		VB-INSTRUCTIONAL MATERIALS	255.04
P79137	101	186 00	E.C.I.A. CHAPTER 1	BMI EDUCATIONAL SERVICES		VB-INSTRUCTIONAL MATERIALS	219.29
P79140	101	187 00	S.I.P. (SCHOOL IMPROVEMENT PR	VON'S MARKET (LIMONITE AVE)		WR-OPEN PO-SUPPLIES	300.00
P79148	101	187 00	S.I.P. (SCHOOL IMPROVEMENT PR	LOUIS ROBIDOUX NATURE CENTE		WR-ADMISSION FEES	330.00
P79155	101	187 00	E.C.I.A. CHAPTER 1	SOPRIS WEST, INC.		WR-INSTRUCTIONAL MATERIALS	11,615.45
P79160	101	178 00	MENTOR TEACHER PROGRAM-OTHER	NSTA 1994 NATIONAL CONVENTI		EC-CONF 4/1/94 5 EMP	300.00
P79165	101	178 00	NON-AGENCY ACYF HEADSTART	WAGNA SYSTEMS, INC.		EC-INSTRUCTIONAL MATERIALS	464.32
P79203	101	190 00	S.I.P. (SCHOOL IMPROVEMENT PR	GOPHER SPORT		JMS-INSTRUCTIONAL MATERIALS	295.11
P79217	101	179 00	E.C.I.A. CHAPTER 1	EDUCATIONAL RESOURCES - ORD		GA-INSTRUCTIONAL MATERIALS	536.00
P79221	101	190 00	S.I.P. (SCHOOL IMPROVEMENT PR	GLOBAL INDUSTRIAL EQUIPMENT		JMS-INSTRUCTIONAL MATERIALS	298.47
P79236	101	178 00	NON-AGENCY ACYF HEADSTART	SCHOOL HEALTH SUPPLY CO		EC-MEDICAL EQUIPMENT	2,979.83

K-1
 33

RIVERSIDE REGIONAL EDUCATION DATA CENTER

REPORT: APS/APS550/01
 RUN DATE: 03/08/94
 PAGE: 4

COUNTY: 33 RIVERSIDE
 DISTRICT: 46 JURUPA UNIFIED

REPORT OF PURCHASES

02/18/94 - 03/04/94
 PURCHASES OVER \$200

REF	FUND	LOC/SITE	PROGRAM	VENDOR	DESCRIPTION	
				PURCHASE ORDERS TO BE RATIFIED		
P79250	101	187 00	E.C.I.A. CHAPTER 1	EDUCATIONAL INSIGHTS	WR-INSTRUCTIONAL MATERIALS	204.40
P79252	101	181 00	S.I.P. (SCHOOL IMPROVEMENT PR	HOUGHTON MIFFLIN CO-ORDER D	MB-TEXTBOOKS	2,998.73
					FUND TOTAL	45,296.41
					TOTAL NUMBER OF PURCHASE ORDERS	32
P79077	102	180 00	SDC LEARNING HANDICAPPED (LH)	AMERICAN THEATER ARTS FOR Y	1A-FIELD TRIPS	232.05
P79173	102	178 00	PROGRAM SPECIALISTS	SHAMROCK EQUIPMENT CO.	EC-SECRETARIAL CHAIRS	348.30
					FUND TOTAL	580.35
					TOTAL NUMBER OF PURCHASE ORDERS	2
P79033	103	178 00	PUPIL TRANSPORTATION	MARK CHRISTOPHER, INC.	TRANS-VEHICLE AND BUS PARTS	1,500.00
P79034	103	178 00	PUPIL TRANSPORTATION	WINDSHIELDS AMERICA, INC.	TRANS-OPEN PO-WINDSHIELD REPAIRS	1,000.00
P79109	103	178 00	PUPIL TRANSPORTATION	RIVERSIDE CO. OFFICE OF EDU	EC-TRANSPORT SPECIAL ED STUDENT	1,300.00
P79123	103	178 00	GIFTED AND TALENTED EDUCATION	COMP USA	RHS-COMPUTER EQUIPMENT	462.25
P79208	103	178 00	GIFTED AND TALENTED EDUCATION	D & S MARKETING SYSTEMS	JVHS-INSTRUCTIONAL MATERIALS	241.63
P79211	103	178 00	PUPIL TRANSPORTATION	OMAHA AUTO PARTS INC	TRANS-OPEN PO-VEHICLE & BUS PARTS	5,000.00
P79212	103	178 00	PUPIL TRANSPORTATION	GOSLIN TIRE SERVICE	TRANS-OPEN PO-TIRES	5,000.00
					FUND TOTAL	14,503.88
					TOTAL NUMBER OF PURCHASE ORDERS	7
P78887	119	178 00	PLANT MAINTENANCE	WOODWORKERS SUPPLY INC.	MAINT-SUPPLIES	391.29
P78891	119	178 00	PLANT MAINTENANCE	E.R. BLOCK PLUMBING CO.	MAINT-PLUMBING REPAIRS	2,469.11
P78897	119	178 00	PLANT MAINTENANCE	THOMPSON ENGINEERING CO	MAINT-SUPPLIES	302.23
P78901	119	178 00	PLANT MAINTENANCE	DE ANZA HARDWARE BUILDING S	MAINT-SUPPLIES	237.21

34

RIVERSIDE REGIONAL EDUCATION DATA CENTER

REPORT: APS/APS550/01
 RUN DATE: 03/08/94
 PAGE: 5

COUNTY: 33 RIVERSIDE
 DISTRICT: 46 JURUPA UNIFIED

REPORT OF PURCHASES

02/18/94 - 03/04/94
 PURCHASES OVER \$200

REF	FUND	LOC/SITE	PROGRAM	VENDOR	DESCRIPTION	
PURCHASE ORDERS TO BE RATIFIED						
P79044	119	178 00	PLANT MAINTENANCE	DE ANZA HARDWARE BUILDING S	MAINT-OPEN PO-SUPPLIES	1,000.00
P79063	119	178 00	PLANT MAINTENANCE	BURKE ENGINEERING CO	MAINT-SUPPLIES	413.39
P79065	119	178 00	PLANT MAINTENANCE	AMERICAN LOCK & SUPPLY CO	MAINT-SUPPLIES	2,106.45
P79072	119	178 00	PLANT MAINTENANCE	BEST LOCKING SYSTEMS OF L.A	MAINT-SUPPLIES	2,433.88
P79166	119	178 00	PLANT MAINTENANCE	MACHADO IRON & STEEL	MAINT-OPEN PO-SUPPLIES	1,000.00
P79168	119	178 00	PLANT MAINTENANCE	AMES SUPPLY CO.	MAINT-SUPPLIES	463.43
P79169	119	178 00	PLANT MAINTENANCE	GRAINGER W W INC	MAINT-SUPPLIES	261.13
P79234	119	178 00	PLANT MAINTENANCE	HOWARD INDUSTRIES	MAINT-SUPPLIES	791.96
FUND TOTAL						11,870.08
TOTAL NUMBER OF PURCHASE ORDERS						12
P79079	310	186 22	FACILITIES	PRESS ENTERPRISE COMPANY	VB-ADVERTISEMENT	400.00
FUND TOTAL						400.00
TOTAL NUMBER OF PURCHASE ORDERS						1
P79242	320	181 11	FACILITIES	NASCO WEST INC	MB-EASELS	252.03
P79243	320	181 11	FACILITIES	HOOVER'S BROTHERS, INC.	MB-F & E EQUIPMENT	1,121.68
FUND TOTAL						1,373.71
TOTAL NUMBER OF PURCHASE ORDERS						2
P79149	650	197 33	FACILITIES	SOUTHWEST BASEBALL SUPPLY	JVHS-ATHLETIC EQUIPMENT	4,304.61
FUND TOTAL						4,304.61
TOTAL NUMBER OF PURCHASE ORDERS						1
P79195	900	178 00	DISTRICT ADMINISTRATION	APPLE COMPUTER-SUPPORT CENT	PA-COMPUTER EQUIPMENT	1,877.01

K-1
 BS

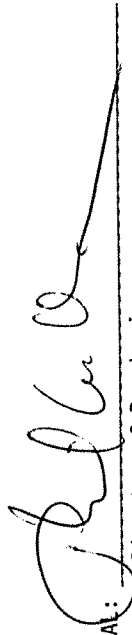
RIVERSIDE REGIONAL EDUCATION DATA CENTER

REPORT: APS/APS550/01
RUN DATE: 03/08/94
PAGE: 6

COUNTY: 33 RIVERSIDE
DISTRICT: 46 JURUPA UNIFIED

REPORT OF PURCHASES
02/18/94 - 03/04/94
PURCHASES OVER \$200

REF	FUND	LOC/SITE	PROGRAM	VENDOR	DESCRIPTION	
				PURCHASE ORDERS TO BE RATIFIED		
P79196	900	178 00	DISTRICT ADMINISTRATION	COMPUTERLAND OF UPLAND	PA-COMPUTER EQUIPMENT	831.14
					FUND TOTAL	2,708.15
					TOTAL NUMBER OF PURCHASE ORDERS	2
P78886	930	197 00	PLANT MAINTENANCE	TOMARK SPORTS INC	MAINT-JVHS-BLEACHER REPAIRS	2,250.00
P79071	930	184 00	PLANT MAINTENANCE	RIVERSIDE CO. HEALTH SERVIC	MAINT-PAINT AND LEAD SAMPLING	614.30
P79230	930	197 00	PLANT MAINTENANCE	PORTER BOILER	JVHS-REPLACE WATER HEATERS	13,144.00
				NO RATIFIED P.O.'S FOUND	FUND TOTAL	16,008.30
					TOTAL NUMBER OF PURCHASE ORDERS	3
101	PURCHASE ORDERS OVER			\$200.00	FOR A TOTAL AMOUNT OF	150,341.75
126	PURCHASE ORDERS UNDER			\$200.00	FOR A TOTAL AMOUNT OF	11,337.06
227	PURCHASE ORDERS				FOR A GRAND TOTAL OF	161,678.81

RECOMMEND APPROVAL: 
Director of Purchasing

K-1
P36

RIVERSIDE REGIONAL EDUCATION DATA CENTER

REPORT: APS/APSS50/01
 RUN DATE: 03/08/94
 PAGE: 1

COUNTY: 33 RIVERSIDE
 DISTRICT: 46 JURUPA UNIFIED

REPORT OF PURCHASES

02/18/94 - 03/04/94
 PURCHASES OVER \$1

DISBURSEMENT ORDERS

REF	FUND	LOC/SITE	PROGRAM	VENDOR	DESCRIPTION	
D31050	100	185 00	SCHOOL ADMINISTRATION	BACA, DOROTHY	D18359 CONF 2/4-5/94 1 EMP	150.00
D31102	100	178 00	DISTRICT ADMINISTRATION	CAMPBELL, KENT	D18366 REIMB CONF 1/1-4/94 1 EMP	622.01
D31212	100	178 00	DISTRICT ADMINISTRATION	ARIZONA SCHOOL BOARDS ASSOC	D18367 CONF 4/28-5/1/94 1 BD MEMBER	135.00
D31213	100	178 00	DISTRICT ADMINISTRATION	THE POINTE HILTON	D18368 CONF 4/28-5/1/94 1 BD MEMBER	463.47
D31225	100	173 00	OPERATIONS-OTHER FACILITY	SO CALIFORNIA GAS	D18388 JAN 94 GAS BILL	941.92
D31226	100	178 00	OPERATIONS-OTHER FACILITY	SO CALIFORNIA EDISON	D18390 JAN 94 ELECTRIC BILL	17,172.48
D31227	100	181 00	OPERATIONS-OTHER FACILITY	JURUPA COMMUNITY SERVICES	D18389 JAN 94 WATER BILL	6,297.14
D31228	100	178 00	DISTRICT ADMINISTRATION	CALIF SCHOOL EMP ASSOCIATIO	D18393 REISSUE STALE DATED WARRANT	1,500.00
D31229	100	178 00	DISTRICT ADMINISTRATION	JURUPA UNIFIED	D18394 REPLENISH REVOLVING CASH FUND	10.00
D31230	100	178 00	DISTRICT ADMINISTRATION	WICKETT & GASH	D18391 FEB 94 GASOLINE PURCHASES	5,981.51
D31231	100	000 00	SELF-CONTAINED CLASSROOM	MUSIC CENTER	D18397 PROF SERVICES 12/15/93 PA	550.00
D31232	100	000 00	SELF-CONTAINED CLASSROOM	MUSIC CENTER	D18398 PROF SERVICES 1/19/94 PA	564.00
D31233	100	000 00	SELF-CONTAINED CLASSROOM	LAZORE, DEANNA	D18396 PROF SERVICES 1/12/94 GA	500.00
D31234	100	196 00	GENERAL EDUCATION - SECONDARY	ROBINS TRAINING GROUP, THE	D18399 PROF SERVICES 3/11/94 RHS	3,750.00
D31235	100	178 00	HEALTH	ALLEN, IRENE	D18403 MILEAGE	51.62
D31236	100	184 00	INSTRUCTIONAL MEDIA	ANDRADE, JOSE	D18426 REIMB LOST BOOK FEE	9.97
D31237	100	199 00	CONTINUATION EDUCATION	ASHWOOD, MARGERY	D18400 MILEAGE	94.47
D31238	100	178 00	PLANT OPERATIONS	CRAIG, JAMES	D18405 MILEAGE	10.65
D31239	100	175 00	STUDENT ACTIVITIES	HALE, GARY	D18411 REIMB INSTRUCTIONAL MATERIALS	6.34
D31240	100	182 00	SELF-CONTAINED CLASSROOM	HENDERSON, DONNA	D18419 REIMB INSTRUCTIONAL MATERIALS	28.50
D31241	100	186 00	SCHOOL ADMINISTRATION	HERNANDEZ, CARMEN	D18412 REIMB POSTAGE	15.00
D31242	100	191 00	SELF-CONTAINED CLASSROOM	MANZO, DONALD	D18413 REIMB INSTRUCTIONAL MATERIALS	91.45
D31243	100	186 00	SELF-CONTAINED CLASSROOM	MILLER, BERNICE	D18422 REIMB ADMISSION TO EVENT	29.00
D31244	100	178 00	GUIDANCE & COUNSELING	PARSONS, JILLET	D18402 MILEAGE	10.28

K-2
 B51

RIVERSIDE REGIONAL EDUCATION DATA CENTER

REPORT: APS/APS550/01
 RUN DATE: 03/08/94
 PAGE: 2

COUNTY: 33 RIVERSIDE
 DISTRICT: 46 JURUPA UNIFIED

REPORT OF PURCHASES

02/18/94 - 03/04/94
 PURCHASES OVER \$1

DISBURSEMENT ORDERS

REF	FUND	LOC/SITE	PROGRAM	VENDOR	DESCRIPTION	
D31245	100	199 00	CONTINUATION EDUCATION	PROSSER, TERRY	D18404 MILEAGE	33.41
D31246	100	178 00	PLANT OPERATIONS	ROBINSON, DONALD	D18401 MILEAGE	22.68
D31247	100	178 00	HEALTH	SCHANZ, VIRGINIA	D18405 MILEAGE	37.02
D31248	100	182 00	SELF-CONTAINED CLASSROOM	SILVA, CATHY	D18420 REIMB LOST BOOK FEE	12.89
D31249	100	178 00	SCHOOL ADMINISTRATION	TWOMBLEY, JANA	D18407 REIMB OFFICE SUPPLIES	5.00
D31282	100	195 00	CONTINUATION EDUCATION	RIVERSIDE CO. OFFICE OF EDU	D18370 CONF 3/17/94 1 EMP	30.00
D31283	100	178 00	DISTRICT ADMINISTRATION	RIVERSIDE CO. OFFICE OF EDU	D18374 CONF 3/17-18/94 1 EMP	30.00
D31395	100	172 00	OPERATIONS-OTHER FACILITY	JURUPA COMMUNITY SERVICES	D18440 JAN 94 WATER BILL	4,204.30
D31396	100	172 00	OPERATIONS-OTHER FACILITY	SO CALIFORNIA GAS	D18441 JAN 94 GAS BILL	9,734.89
D31397	100	175 00	OPERATIONS-OTHER FACILITY	SO CALIFORNIA EDISON	D18442 JAN 94 ELECTRIC BILL	24,222.68
D31398	100	178 00	DISTRICT ADMINISTRATION	HERNANDEZ, TOM	D18434 REISSUE STALE DATED WARRANT	40.00
D31399	100	000 00	SELF-CONTAINED CLASSROOM	IMAGINATION MACHINE	D18438 PROF SERVICES 3/16/94 SS	495.00
D31400	100	196 00	OPERATIONS-OTHER FACILITY	MOBIL OIL CREDIT CORPORATIO	D18439 NOV/DEC 93 GASOLINE CHARGES	306.18
D31401	100	178 00	PLANT OPERATIONS	RIVERSIDE COUNTY	D18430 HAZARDOUS MATERIALS PERMIT RH	1,105.00
D31402	100	178 00	PLANT OPERATIONS	RIVERSIDE COUNTY	D18429 UNDRGRND TANK PERMIT JVHS	1,050.00
D31403	100	178 00	DISTRICT ADMINISTRATION	SNYDER, BILL	D18433 REISSUE STALE DATED WARRANT	31.70
D31456	100	178 00	DISTRICT ADMINISTRATION	FAREY, JO ANNE	D18445 REIMB CONF 2/22-24/94 1 EMP	9.10
D31457	100	178 00	DISTRICT ADMINISTRATION	PETERSON, GARY	D18381 REIMB CONF 2/23-25/94 1 EMP	348.82
FUND TOTAL						80,803.48
TOTAL NUMBER OF DISBURSEMENTS						42
D31051	101	197 00	VOCATIONAL AGRICULTURE INCENT	KANTNER, BRIAN	D18360 CONF 1/15-16/94 1 EMP	125.00
D31052	101	178 00	OTHER STATE SPECIAL PROJECTS	BOYKIN, LENORE	D18362 CONF 2/12-13/94 3 EMP	61.00
D31053	101	173 00	EISS-EARLY INTERVENTION/SCHOO	SAN DIEGO PRINCESS	D18363 CONF 4/15-20/94 1 EMP	1,175.00

K-2
 PS2

RIVERSIDE REGIONAL EDUCATION DATA CENTER

REPORT: APS/APS550/01
 RUN DATE: 03/08/94
 PAGE: 3

COUNTY: 33 RIVERSIDE
 DISTRICT: 46 JURUPA UNIFIED

REPORT OF PURCHASES

02/18/94 - 03/04/94
 PURCHASES OVER \$1

DISBURSEMENT ORDERS

REF	FUND	LOC/SITE	PROGRAM	VENDOR	DESCRIPTION	
D31054	101	178	00	OTHER STATE SPECIAL PROJECTS	PORTER, HAROLD L	D18361 CONF 2/12-15/94 3 EMP 150.00
D31100	101	178	00	PL94-142 EDUC FOR ALL HANDICA	CAPS CONFERENCE	D18365 CONF 3/10-11/94 2 EMP 180.00
D31101	101	190	00	DRUG ABUSE EDUCATION & PREVEN	FRIDAY NIGHT LIVE	D18364 CONF 3/21-23/94 1 EMP 125.00
D31250	101	178	00	PL94-142 EDUC FOR ALL HANDICA	HENDRICK, BILL	D18424 REIMB LUNCHEON INSERVICE 20.04
D31251	101	178	00	MENTOR TEACHER PROGRAM-OTHER	HORN, PAUL	D18418 REIMB SUPPLIES 113.62
D31252	101	175	00	E.C.I.A. CHAPTER 1	PROVENZENO, DEBBIE	D18416 REIMB INSTRUCTIONAL MATERIALS 29.43
D31253	101	180	00	E.I.A. (ECONOMIC IMPACT AID)	ROSTEN, BEVERLY	D18414 REIMB INSTRUCTIONAL MATERIALS 32.55
D31254	101	184	00	S.I.P. (SCHOOL IMPROVEMENT PR	WHEELER, JOHN	D18421 REIMB INSTRUCTIONAL MATERIALS 32.27
D31255	101	184	00	S.I.P. (SCHOOL IMPROVEMENT PR	WHEELER, JOHN	D18415 REIMB INSTRUCTIONAL MATERIALS 144.78
D31284	101	180	00	E.I.A. (ECONOMIC IMPACT AID)	CASP	D18375 CONF 3/10-13/94 1 EMP 140.00
D31285	101	180	00	E.I.A. (ECONOMIC IMPACT AID)	WRIGHT GROUP, THE	D18372 CONF 4/30/94 1 EMP 79.00
D31286	101	180	00	E.I.A. (ECONOMIC IMPACT AID)	WRIGHT GROUP, THE	D18373 CONF 3/5 & 26/94 2 EMP 315.00
D31287	101	178	00	ESEA T-VII BILINGUAL EDUC ACT	MENDEZ, LUZ	D18371 REIMB CONF 2/15-16/94 1 EMP 166.30
D31288	101	180	00	S.I.P. (SCHOOL IMPROVEMENT PR	WENZEL, MARK	D18427 PROF SERVICES 3/4/94 1A 450.00
D31391	101	183	00	S.I.P. (SCHOOL IMPROVEMENT PR	BUREAU OF EDUCATION & RESEA	D18379 CONF 4/7/94 2 EMP 198.00
D31393	101	197	00	SB 1882-CA PROFESSIONAL DEVEL	HUNTINGTON BEACH UNION HS D	D18378 CONF 3/8/94 2 EMP 190.00
D31394	101	178	00	TOBACCO USE PREVENTION EDUCAT	SAN BERNARDINO SUPT OF SCHO	D18376 CONF 3/15/94 5 EMP 100.00
D31404	101	180	00	S.I.P. (SCHOOL IMPROVEMENT PR	ABOVE ALL BALLOON CHARTERS	D18437 PROF SERVICES 2/10/94 1A 250.00
D31405	101	189	00	S.I.P. (SCHOOL IMPROVEMENT PR	JONES, DELORIS	D18436 PROF SERVICES 11/12/93 1H 420.00
D31406	101	173	00	S.I.P. (SCHOOL IMPROVEMENT PR	WACK, BOB	D18435 PROF SERVICES 2/28/94 6H 810.00
D31458	101	176	00	S.I.P. (SCHOOL IMPROVEMENT PR	CORONA NORCO UNIFIED SCHL D	D18382 CONF 5/10/94 2 EMP 90.00
D31459	101	178	00	ECONOMIC IMPACT AID - L E P	RIVERSIDE CO. OFFICE OF EDU	D18444 CONF 1/5 & 3/16/94 1 EMP 75.00
D31450	101	178	00	ECONOMIC IMPACT AID - L E P	RIVERSIDE CO. OFFICE OF EDU	D18443 CONF 1/5 & 3/16/94 1 EMP 75.00
D31461	101	178	00	MENTOR TEACHER PROGRAM-OTHER	TCH SEMINAR	D18446 CONF 3/25/94 1 EMP 99.00

K-2
 P33

RIVERSIDE REGIONAL EDUCATION DATA CENTER

REPORT: APS/APSS50/01
 RUN DATE: 03/08/94
 PAGE: 4

COUNTY: 33 RIVERSIDE
 DISTRICT: 46 JURUPA UNIFIED

REPORT OF PURCHASES

02/18/94 - 03/04/94
 PURCHASES OVER \$1

DISBURSEMENT ORDERS

REF	FUND	LOC/SITE	PROGRAM	VENDOR	DESCRIPTION	
D31462	101	178	00	MENTOR TEACHER PROGRAM-OTHER	TCM SEMINAR	D18447 CONF 3/25/94 1 EMP 99.00
D31463	101	186	00	E.C.I.A. CHAPTER 1	PEREZ, KATHLEEN	D18488 REIMB CONF 2/5-6/94 1 EMP 8.00

						FUND TOTAL 5,753.99
						TOTAL NUMBER OF DISBURSEMENTS 29
D31257	102	173	00	RESOURCE SPECIALIST PROGRAM	YOUNG, SANDRA	D18425 REIMB INSTRUCTIONAL MATERIALS 12.05
D31390	102	182	00	RESOURCE SPECIALIST PROGRAM	CORONA NORCO UNIFIED SCHL D	D18380 CONF 5/10/94 1 EMP 45.00
D31407	102	191	00	RESOURCE SPECIALIST PROGRAM	DILED, KATHY	D18410 REIMB ADMISSION TO EVENT 39.00

						FUND TOTAL 96.05
						TOTAL NUMBER OF DISBURSEMENTS 3
D31258	106	179	00	SELF-CONTAINED CLASSROOM	COOK, LISA	D18409 REIMB INSTRUCTIONAL MATERIALS 63.97

						FUND TOTAL 63.97
						TOTAL NUMBER OF DISBURSEMENTS 1
D31259	119	178	00	PLANT MAINTENANCE	DOWLING, TOM	D18417 REIMB MAINT SUPPLIES 26.92
D31281	119	178	00	PLANT MAINTENANCE	ELZIG, BILL	D18369 REIMB CONF 2/16-17/94 1 EMP 260.16
D31392	119	178	00	PLANT MAINTENANCE	ELZIG, BILL	D18377 REIMB CONF 2/16/94 1 EMP 23.99

						FUND TOTAL 311.07
						TOTAL NUMBER OF DISBURSEMENTS 3
D31408	403	178	00	DISTRICT ADMINISTRATION	DAVID TAUSSIG AND ASSOC., I	D18431 PROF SERVICES JAN 94 1,755.39

						FUND TOTAL 1,755.39
						TOTAL NUMBER OF DISBURSEMENTS 1
D31260	800	178	00	SELF-CONTAINED CLASSROOM	MACIAS, JOHNNY	D18423 REIMB LOST BOOK FEE 15.00

34
 K-2

RIVERSIDE REGIONAL EDUCATION DATA CENTER

REPORT: APS/APSS50/01
 RUN DATE: 03/08/94
 PAGE: 5

COUNTY: 33 RIVERSIDE
 DISTRICT: 46 JURUPA UNIFIED

REPORT OF PURCHASES

02/18/94 - 03/04/94
 PURCHASES OVER \$1

DISBURSEMENT ORDERS

REF	FUND LOC/SITE	PROGRAM	VENDOR	DESCRIPTION	FUND TOTAL	TOTAL NUMBER OF DISBURSEMENTS
D31261	900 178 00	DISTRICT ADMINISTRATION	PARSONS, JILLET	D18392 REIMB PERSONAL LOSS	250.00	1
				FUND TOTAL	250.00	
				TOTAL NUMBER OF DISBURSEMENTS		1

81 DISBURSEMENT ORDERS FOR A GRAND TOTAL OF 89,048.95

RECOMMEND APPROVAL: 
 Director of Business Services

K-2
 P35

Jurupa Unified School District

1993/1994 AGREEMENTS

AGREEMENT NUMBER	CONTRACTOR	AMOUNT	FUND/PROGRAM TO BE CHARGED	PURPOSE
94-1	Consultant or Personal Service Agreements			
94-1-III	City of Rancho Cucamonga	\$1,450.00	SIP	Inservice on "Disaster Preparedness" to staff of Pedley Elementary
94-1-JJJJ	Diana Leon	\$100.00	Drug Free Schools	Professional dance lessons for four classrooms at Sunnyslope Elementary
94-1-KKKK	Deanna Lazore	\$700.00	PTA	Dance performance for students and staff of Glen Avon Elementary
94-1-LLLL	Angie Camacho	\$200.00	Head Start	P.R.I.C.E. Parenting Sessions to Spanish-speaking Head Start parents
94-1-MMMM	Mary Sullivan	\$200.00	Head Start	P.R.I.C.E. Parenting Sessions to Spanish-speaking Head Start parents
94-1-UUU-M1	Above All Charters	\$25.00	SIP	Revise contract amount to include \$25.00 charge for additional insured insurance
94-3	Riverside County Schools Agreements			
94-3-G-M1	Head Start	NA	NA	Increase of \$241,139.00 to Head Start Agreement for 1993/1994 school year. New agreement amount is \$572,263.00

The Assistant Superintendent Business Services will have copies of agreements available for review by the Board.

K-3

RE/dc
3/21/94

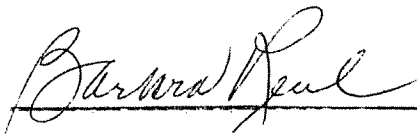
Jurupa Unified School District

MONTHLY PAYROLL DISBURSEMENTS

February 1994

<u>FEBRUARY PAYROLL</u>	<u>MONTHLY</u>	<u>HOURLY</u>	<u>TOTAL PAYMENT</u>
CERTIFICATED	\$3,378,007.00	\$154,908.40	\$3,532,915.40
CLASSIFIED	361,060.68	613,822.55	974,883.23
BOARD MEMBERS	3,286.78		3,286.78
YOUTH EMPLOYMENT PROGRAM	-0-	-0-	-0-
			<hr/>
TOTAL FEBRUARY PAYMENT			\$4,511,085.41

RECOMMEND APPROVAL:



DIRECTOR OF BUSINESS SERVICES

RIVERSIDE COUNTY OFFICE OF EDUCATION

RESOLUTION FOR EXPENDITURE OF EXCESS FUNDS

RESOLUTION NO. 94/27

WHEREAS the governing board of the Jurupa Unified School District has determined that income in the amount of \$ 920,057 is assured to said district in excess of amounts previously budgeted, as is reflected on the attached page (Part 1), and

WHEREAS the governing board of the Jurupa Unified School District can show just cause for the expenditure of such excess funds.

NOW THEREFORE BE IT RESOLVED that pursuant to Section 42602 of the Education Code of California, such excess funds to be appropriated according to the schedule on the attached page (Part II).

Approved:

DALE S. HOLMES
Superintendent
Riverside County Office of Education

By: _____

This is an exact copy of resolution
adopted by the governing board at

a regular meeting on

March 21, 19 94

Clerk or Authorized Agent

NON-ROUTINE STUDENT FIELD TRIP/EXCURSION - REQUEST FOR APPROVAL

DATE(S): April 6 - 10 1994
 LOCATION: Santa Clara, CA
 TYPE OF ACTIVITY: Teenwork Conference
 PURPOSE/OBJECTIVE: Provide Teen leadership training for students at JVHS. Peer leaders plan and implement a Drug Free, Alcohol Free, Tobacco Free program.
 NAMES OF ADULT SUPERVISORS (Note job title: principal, volunteer, etc.)
Gary Hanson F.N.L. Advisor/Guidance Coordinator
Patricia Prosser F.N.L. Advisor/Teacher

EXPENSES:	Transportation	\$ 612.00	Flight	Number of Students <u>5</u>
	Lodging	\$		
	Meals	\$		
	All Other	\$ 875.00		
		1,487.00		
	TOTAL EXPENSE	\$		Cost Per Student <u>217.40</u> (Total Cost ÷ # of Students)

INCOME: List All Income By Source and Indicate Amount Now on Hand:

Source	Expected Income	Income Now On Hand
_____	_____	_____
_____	_____	_____
_____	_____	_____
TOTAL:	\$	

Arrangements for Transportation: Air travel arranged with Top hat
 Arrangements for Accommodations and Meals: Included with conference
 Planned Disposition of Unexpended Funds: _____

I hereby certify that all other requirements of District regulations will be complete and on file in the District Office ten days prior to departure.

Signature: Gary Hanson (ay) Date: 3/8/94 School: JVHS
 (Instructor)

All persons making the field trip shall be determined to have waived all claims against the District, the teachers, and the Board of Education for injury, accident, illness, or death occurring during or by reason of the field trip. All adult volunteers taking out-of-state field trips shall sign a statement waiving such claims. All student participants must submit a parental consent for medical and dental care and waiver of liability form.

Approvals: Principal: Alan Young Date: 3/8/94
 Date approved by the Board of Education _____ Date: _____

Distribution: White copy to Assistant Superintendent Education Services
 Yellow copy to Originator
 Pink copy to Principal

(K-7)

Jurupa Unified School District

NON-ROUTINE STUDENT FIELD TRIP/EXCURSION - REQUEST FOR APPROVAL

DATE(S): 06--8 May 1994LOCATION: Tulare, CA.TYPE OF ACTIVITY: Percussion Competition.PURPOSE/OBJECTIVE: Expose our members and compete against other percussion units.

NAMES OF ADULT SUPERVISORS (Note job title: principal, volunteer, etc.) A.M. Works -
Inst. Music Director, Andy Shomph- Percussion Inst. Dean Diomedes - Percussion
Inst. Ward & Diana Strona - Dist Employee and Parent Vol.

EXPENSES:	Transportation	\$		Number of Students	<u>28</u>
	Lodging	\$			
	Meals	\$			
	All Other	\$			
	TOTAL EXPENSE	\$	<u>1,125.00</u>	Cost Per Student	<u>\$37.50</u>
				(Total Cost ÷ # of Students)	

INCOME: List All Income By Source and Indicate Amount Now on Hand:

Source	Expected Income	Income Now On Hand
<u>Student Accounts</u>	<u>1,000.00</u>	<u>\$500.00</u>
<u>Kinderfoto</u>	<u>500.00</u>	<u>100.00</u>
TOTAL:	\$ <u>\$1,500.00</u>	<u>\$600.00</u>

Arrangements for Transportation: Dist school bus.Arrangements for Accommodations and Meals: Students and parents will cook in the
the traveling 5th wheel.Planned Disposition of Unexpended Funds: N/A

I hereby certify that all other requirements of District regulations will be complete and on file in the District Office ten days prior to departure.

Signature: [Signature] Date: 08 May 94 School: J.V.H.S.
 (Instructor)

All persons making the field trip shall be determined to have waived all claims against the District, the teachers, and the Board of Education for injury, accident, illness, or death occurring during or by reason of the field trip. All adult volunteers taking out-of-state field trips shall sign a statement waiving such claims. All student participants must submit a parental consent for medical and dental care and waiver of liability form.

Approvals: Principal: [Signature] Date: 3/8/94
[Signature] Date approved by the Board of Education Date: _____

Distribution: White copy to Assistant Superintendent Education Services
 Yellow copy to Originator
 Pink copy to Principal

(K-8)

Jurupa Unified School District
1994 GRADUATION AND PROMOTION EXERCISES

SCHOOL	TIME AND PLACE	BOARD OF EDUCATION *	ADMINISTRATORS
Nueva Vista High Graduation	Monday, June 13, 1994, 6:00 p.m. UCR Theater	_____ (Mr. Knight received) (Mrs. Ruane on stage)	● Mrs. Roberts ● Mr. Taylor
Jurupa Middle School Promotion	Thursday, June 16, 1994, 3:30 p.m. Jurupa Valley H.S. Football Field	_____ (Mr. Barnes received)	Mr. Taylor Dr. Hendrick Mr. Edmunds
Jurupa Valley High School Graduation	Thursday, June 16, 1994, 6:30 p. m. Jurupa Valley H.S. Football Field	_____ (Mrs. Burns received) (Mrs. Ruane on stage)	● Mr. Taylor ● Dr. Hendrick
Mission Middle School Promotion	Thursday, June 16, 1994, 4:00 p.m. Edward E. Hawkins Stadium (RHS)	_____ (Mr. Chavez received)	Mrs. Roberts Dr. Lenertz Mr. Campbell
Rubidoux High School Graduation	Thursday, June 16, 1994, 7:00 p.m. Edward E. Hawkins Stadium (RHS)	_____ (Mr. Knight received) (Mr. Chavez on stage)	● Mrs. Roberts ● Dr. Lenertz

Jurupa Valley High Awards Night	Monday, June 13, 1994, 7:00 p.m. Jurupa Valley High Gym
------------------------------------	--

Rubidoux High Awards Night	Tuesday, June 14, 1994, 7:00 p.m. Rubidoux High School Gym
-------------------------------	---

- Caps and Gowns: Mrs. Roberts, Mr. Taylor, Dr. Lenertz, Dr. Hendrick

* Board members not in the ceremony but in attendance at any exercise will be introduced.
Please let the principal know you are present when you arrive.

Jurupa Unified School District

CAFETERIA FUND

Comparative Revenue and Expense Report
Quarter Ending December 31, 1993

<u>Revenue:</u>	<u>1992</u>	<u>1993</u>
Daily Sales	\$503,210	\$502,685
Federal Reimbursement	540,368	605,447
State Reimbursement	41,861	43,817
Other Income	7,142	8,194
Total Sales	<u>\$1,092,581</u>	<u>\$1,160,143</u>
 <u>Cost of Food Sales:</u>		
Food Available for Sale	\$421,553	\$463,356
Less Ending Inventory	<u>38,311</u>	<u>27,641</u>
Cost of Sales	<u>383,242</u>	<u>435,715</u>
Gross Profit on Sales	<u>\$709,339</u>	<u>\$724,428</u>
 <u>Expenses:</u>		
Labor	\$503,711	\$466,983
Supplies	42,467	53,283
Purchased Services	15,775	8,054
Vehicle Repairs & Fuel	3,247	3,540
Maintenance Repairs	7,687	5,741
New Equipment	3,607	36,370
Replacement Equipment	5,448	9,830
General Fund Expense	<u>96,798</u>	<u>85,840</u>
Total Expenses	<u>\$678,740</u>	<u>\$669,641</u>
 Net Profit or Loss	 \$30,599	 \$54,787
 Number of Serving Days	 71/73	 74*
Number of Breakfasts Served	55,924	62,962
Number of Lunches Served	424,332	440,888
Average Breakfasts/Day	776	850
Average Lunches/Day	5,894	5,958

*Number of Serving Days does not reflect Van Burens Year Round Summer Session

AH:cc

JURUPA UNIFIED SCHOOL DISTRICT
Instructional Services

DISTRICT BILINGUAL ADVISORY COMMITTEE

UNADOPTED MINUTES OF MEETING #2
January 13, 1994 - 9:00 a.m.
Professional Development Center

CALL TO ORDER

The second meeting of the District Bilingual Advisory Committee was called to order by Mrs. Hermelinda Ramirez at approximately 9:05 a.m. at the Professional Development Center.

ROLL CALL

Elected District Bilingual Committee members present were:

Mrs. Teresita J. Gómez de Lira, Rubidoux High
Mrs. Monica Barba, Pacific Avenue
Mrs. Hermelinda Ramirez, Troth Street
Mr. Jose L. Arroyo, Ina Arbuckle
Mrs. Mercedes Alba, West Riverside
Mrs. Delia Hurtado, Sunnyslope
Mrs. Glafira Tirado, Pedley

Miembros del Personal Docente presentes:

Mrs. Lupe López, Coordinador of Bilingual Education
Mrs. Sonia Porter, District Bilingual Resource Teacher
Mrs. Luz Méndez, Title VII Resource Teacher
Mrs. Lynne Ennis, Assistant Principal, Jurupa Middle
Mrs. Rosi Partida, Secretary
Mrs. Kenya Zundel, Bilingual Language Tutor, Jurupa Valley

Others present were:

Mrs. Ramona Silva, Pacific Avenue

FLAG SALUTE

Members of the Committee and others in attendance participated in the Flag Salute.

INFORMATION SESSION

**COORDINATED
COMPLIANCE REVIEW**

Mrs. López informed the Committee members that during the 1994-1995 school year, a group of representatives from the California Department of Education will review our specially funded programs for students with special needs, one of which will be the program for Limited English Proficient students. The compliance issues were discussed.

**PRESENTATION ON
BILINGUAL PROGRAM
MODELS**

Mrs. López presented information on bilingual program models that are currently being implemented in our districts.

At the elementary level, there are three main programs that are offered for LEP students. Most schools have bilingual classrooms. These classrooms implement an early-exit transitional bilingual program. Most classes have from ten to a majority of limited English proficient students. The instruction in these classrooms is delivered in English for English speakers and for those who speak English at an intermediate level. For non-English speakers and limited English speakers, the instruction is delivered in Spanish and sheltered English.

PRESENTATION OF REDESIGNATION PROCEDURES

There are a few schools where certain grade levels are so heavily impacted that another model has been implemented. This model is the primary language instruction curriculum design model (Eastman model). All students in these classrooms are non-English speakers or very limited in their English skills. Eighty percent of the instruction is in the primary language. However, students must be integrated with English-speaking students for twenty percent of the day for subjects such as P.E., music, and art. As the students learn English, the amount of English instruction increases.

At some schools, there are no bilingual classrooms. Services are provided by a bilingual language tutor in these situations. Tutors are trained by Sonia Porter, District Bilingual Resource Teacher.

At the secondary level, English-as-a-Second Language, sheltered content courses, and tutorial services are offered to Limited English Proficient students.

Mrs. Sonia Porter, District Bilingual Resource Teacher, presented the procedures used in our district to redesignate students from Limited English Proficient to Fluent English Proficient.

The redesignation process developed by the district utilizes the multiple criteria and procedures in accordance with statutory provisions. The steps in the redesignation process were explained.

1. Redesignation Recommendation
2. Compilation of Information
3. Multiple Criteria Review
4. Classification and Placement
5. Follow-up Procedures

An LEP student may be considered for redesignation to FEP status upon the recommendation of any of the following:

1. Parent
2. Classroom Teacher
3. District Bilingual Resource Teacher
4. Principal or Assistant Principal
5. Counselor
6. Student

The classroom teacher is responsible for compiling the data and reporting it on the redesignation recommendation forms. The principal or his/her designee is responsible for notifying the parent of the recommendation for redesignation. Parental signature is required on the district redesignation form prior to submitting it to the Bilingual Coordinator. The parent is given written notification of the redesignation decision and placement.

The classroom teacher is responsible for assessing the student's academic and language progress. The teacher completes the follow-up forms provided by the district and submits it to the Bilingual Coordinator.

The classroom teacher and Bilingual Coordinator are responsible for recording the decision on classification and placement. A copy of the redesignation form shall be filed in the student's cumulative file with a copy given or mailed to the parents.

ACTION SESSION

Mrs. Hermelinda Ramirez recommended approval of the minutes of Session #1 on October 14, 1993. A motion was made to approve the minutes; it passed unanimously.

HEARING SESSION

Mrs. López responded to various questions regarding the placement of students in bilingual classrooms and questions pertaining to the bilingual program.

NEXT MEETING

The next meeting of the District Bilingual Advisory Committee is scheduled for Thursday, May 26, 1994, at the Professional Development Center (PDC).

ADJOURNMENT

The meeting was adjourned at 11:00 a.m.

LL:rvp
1/25/94