

BOARD OF EDUCATION
REGULAR MEETING

AGENDA

BOARD OF EDUCATION David Barnes, President Betty Folsom, Clerk Mary Burns John Chavez Sandra Ruane
SUPERINTENDENT John P. Wilson, Ed.D

JUNE 1, 1992

EDUCATION CENTER BOARD ROOM #16 - 3924 Riverview Drive, Riverside, CA 7:00 p.m.

OPENING

Call to Order

* Indicates supporting document

Roll Call

** Indicates supporting document
for Board Members only

CLOSED SESSION 6:00 P.M.

The Board will meet in Closed Session in the library at West Riverside Elementary School to consider qualified matters of litigation, negotiation, student discipline, professional services, and/or personnel qualifications which are timely.

PUBLIC SESSION 7:00 P.M.

Speaker cards are available on the side table for citizens wishing to address the Board in either a hearing session or communications session. Speakers are requested to limit comments to five minutes.

Call to Order in Public Session

(President Barnes)

Roll Call: Mr. Barnes, Mrs. Folsom, Mrs. Burns, Mr. Chavez, Mrs. Ruane

Flag Salute

(Mr. Barnes)

Invocation

(Mrs. Folsom)

1. Recognition

a. Recognize 1992-93 Teachers of the Year

(Mrs. Roberts)

Each year the district recognizes the outstanding contributions to education by classroom teachers. The following teachers have been selected as Jurupa's Teachers of the Year: Jim Beckley, Mission Bell for the elementary level and Bob Saxon, Nueva Vista High for the secondary level.

The selection is made and announced at this time of the year so that appropriate data on each teacher can be submitted to the Riverside County Office of Education for consideration in the 1993 Riverside County Teacher of the Year competition. The County Office of Education will submit the County nominee to the State for consideration as the 1993 California Teacher of the Year.

1. Recognition (Cont'd)

b. Recognize President David Barnes, WRCASM Media/Press Award Receipt

(Dr. Wilson)

President David Barnes in his professional career as editor and publisher of The Record News, has been awarded the Media/Press Award by the Western Riverside County of School Managers. The President of WRCASM, Ms. Olivia Jaramillo will be present to take note of the award.

* c. Recognize CHP Evaluation of Transportation Department

(Mr. Edmunds)

Each year the California Highway Patrol conducts an inspection of our transportation fleet and operation, and prepares a Safety Compliance Report summarizing the results of the inspection. This year's inspection has been completed.

Over the last several years, the Transportation Department has established an increasingly excellent record on the inspection. In three prior inspections, the number of violations per vehicle went from 1.11 to .7 to .5 last year. This year our overall rating remains at .5 violations per vehicle, the same as last year. 33 buses received no violations, as compared to 26 last year. Only one bus was placed out-of-service due to excessive wear of the wheel chair lift. This vehicle was certified for use as a passenger bus, and put back in service. The CHP inspector commented that, "The fleet is in excellent condition."

We continue to maintain the highest rating ever received by our Transportation Department, which is the same as last year. It is difficult to maintain, and almost impossible to exceed. The Transportation Department's long history of excellent CHP inspection ratings continues. Congratulations on doing a super job. Information only.

d. Recognize Jurupa Valley High School Future Farmers of America (FFA)

(Mrs. Roberts)

Mr. Gary Lesh, FFA advisor at Jurupa Valley High School, will introduce students and give a brief report on their accomplishments during the school year.

2. Administrative Reports and Written Communications

a. Accept Donations

(Mr. Edmunds)

All donations are given to Jurupa Unified School District with the request that the money or item be used at the designated school.

The Glen Avon Elementary School PTA wishes to donate \$3,500 to be used for Fine Arts programs presented at the school in the 1991/92 school year; and \$800 to be used for teachers to purchase warehouse supplies (@ \$35 each) as a gift for Teacher Appreciation Day.

The Mission Bell Elementary School PTA wishes to donate \$500 to the Granite Hill Elementary School PTA to assist them in starting their new PTA chapter.

2. Administrative Reports and Written Communications (Cont'd)

The Sunnyslope Elementary School PTA wishes to donate \$4,566.27 to be used for field trips, RIF book order and student incentives at the school.

Administration recommends acceptance of these donations with letters of appreciation to be sent.

b. Written Communications/Reports

(Dr. Wilson)

3. Report of Student Representatives

The Board welcomes Michele Robinson, Rubidoux High School Student Representative, and Kim Schroeder, Jurupa Valley High School Student Representative. They may wish to address the Board regarding student achievements, interests, or other matters. The Board and administration recognize Ms. Robinson's and Ms. Schroeder's valuable contributions during this past year and wish them much success in future endeavors.

4. Public Verbal Comments

This communication opportunity is included on the agenda of each regular Board meeting so citizens can make suggestions or identify concerns about matters affecting the school district, or request an item on a future agenda. **California law states that there shall be no action on items not shown on the published Board Agenda.**

The Board President will call on speakers who have completed cards requesting to be heard. Comments should be limited to five minutes. The Board may not have complete information available to answer questions and may refer specific concerns to the staff for appropriate attention.

5. Board Member Reports and Comments

Individual Board members may wish to share information about topics not on the agenda, report on committee activities or request items on a future agenda.

ACTION SESSION

A. Approve Minutes of the May 18, 1992 Regular Meeting

Board will approve Minutes of May 18, 1992 Regular Meeting at the June 22, 1992 Regular Meeting.

B. Approve Submittal of Even Start Literacy Program Grant Application

(Mrs. Roberts)

Rubidoux Adult Education staff wishes to apply for a 1992-93 Even Start Family Literacy Program Grant in anticipation of qualifying for a grant of \$95,825.00 renewable for a four year period. The Even Start Program is designed to improve the educational opportunities of the Nation's children and adults by integrating early childhood education and adult education literacy for parents.

B. Approve Submittal of Even Start Literacy Program Grant Application (Cont'd)

The staff recognizes that many parents lack the skills needed to help their children learn. We are especially targeting two facets of our community: English-speaking non-literate parents and those parents who have English as a second language. It is worth noting that we have existing programs (i.e., Preschool, ESL, Chapter One) around which we can plan and coordinate simultaneous educational services for both children and their parents. It is our intent to focus existing resources around an integrated program of the following:

- a) preschool education
- b) adult basic skills training
- c) parenting education and training

One of our first goals would be to generate a "core" literacy curriculum for adults. This purpose will be best served through group and lab instruction in locales which will be accessible to the target community. Elementary schools in the Rubidoux community are the target sites with concentration at a minimum of two schools.

We further envision the development of a resource center which will provide necessary support services (childcare, literacy instructors, and community aides.

A Program Manager will oversee the program implementation, develop community awareness of this program, coordinate staffing concerns and oversee curriculum design.

The District commitment will be limited to use of available classroom space and adult education staff time. This will be accomplished through redirecting existing resources. We see this program developing into a self-sustaining operation as we transition additional resources from existing Adult Education programs into the literacy program over the life of the grant.

Administration recommends that the Board approve submittal of Even Start Literacy Program Grant Application

****C. Approve Submittal of Part I of the 1992-93 Consolidated Application**

(Mrs. Roberts)

Although future funding for state categorical programs is uncertain at this time, the State Department of Education requires that districts desiring to apply for certain categorical funds submit a consolidated application. This application requests funds for five categorical programs including: 1) the federal Chapter 1 program which provides supplemental funds to qualified schools in the district to plan and implement programs for underachieving compensatory education students; 2) the federal Chapter 2 program that is designed as a block grant which combines 29 former federal programs including library media services, guidance and counseling and staff development; 3) State Economic Impact Aid for compensatory education and bilingual education; 4) Tenth Grade Counseling intended to provide assistance to tenth grade students in planning their high school program; and 5) the School Improvement program.

**** C. Approve Submittal of Part I of the 1992-93 Consolidated Application (Cont'd)**

Part I of the Consolidated Application contains (132) separate assurances covering the legal compliance requirements for each program. In addition, this portion of the document requires that the district submit the ranking of compensatory education schools and the criterion used to rank such schools. For the past three years, the district has used the percentage of students receiving free and reduced lunches as the economic criterion to rank schools. The application also must list the programs to be operated at each site and the programs to be coordinated under Assembly Bill 777, the School Based Coordination Act. A description of the Chapter 1 and Chapter 2 supplemental services is required and the criterion used to identify students for compensatory education services must be incorporated.

When the initial application is submitted, final appropriations are unknown; therefore, district and school site personnel are directed to base their planning for the next fiscal year on current funding. In 1991-92, the district received the following amounts to operate these programs: Chapter 1 \$901,734, Chapter 2 \$96,253, Economic Impact Aid for Compensatory Education and Bilingual Education \$577,020. Tenth Grade Counseling \$17,741, and School Improvement \$949,970. All schools in the district receive support from the EIA bilingual allocation and Chapter 2; the School Improvement Program provides additional support for all elementary and middle schools.

Compensatory education funding is available to Glen Avon, Ina Arbuckle, Pacific Avenue, Rustic Lane, Troth Street, Sunnyslope, and West Riverside. Both comprehensive high schools receive equal grants from the Tenth Grade Counseling program. In October, when final appropriations are known, the district request will be updated and Part II will be submitted.

Administration recommends that the Board approve submittal of Part I of the 1992-93 Consolidated Application.

D. Appoint Additional 1991-92 and New 1992-93 Mentor Teachers

(Mrs. Roberts)

The Mentor Teacher program authorized by SB 813 is designed to encourage teachers to remain in the classroom by providing stipends for additional service. Teachers appointed to this position must be viewed by peers and administrators as dedicated to the profession, able to carryout an additional assignment and comfortable in providing assistance to new and experienced teachers. A mentor teacher selection committee composed of 4 teachers elected by teachers and 3 administrators reviews proposals from each mentor, interviews a teacher and administrator familiar with the candidate's background and interviews each of the candidates. Based on the data collected in this process, the committee recommends a list of potential mentor teachers to the Board of Education for appointment. All deliberations regarding selection are confidential and thus, the Board considers the applicants in closed session.

This spring, there are eleven mentor teacher vacancies from the 1991-92 allocation and fourteen additional nominees are proposed to fill positions for the 1992-93 school year. The latter positions may be filled at this time; however, there is a possibility that the Mentor Teacher program will be deleted from the State budget. Therefore, these nominees will be notified that they are selected pending the outcome of the 1992-93 budget deliberations.

Administration recommends that the Board appoint eleven new mentor teachers for the 1991-92 school year and conditionally appoint fourteen mentors for the 1992-93 school year.

E. Authorize Implementation of a "Premium Only" Section 125 Cafeteria Plan for Management/Confidential Personnel

(Mr. Edmunds)

We have received an opinion from attorney John Wahlin of Best, Best & Krieger which indicates that changes in our Cafeteria Plan for health and welfare benefits must take place. This opinion is based upon a private letter ruling by the Internal Revenue Service which concludes that in a Cafeteria Plan such as ours, where an employee has the opportunity to elect between paying for health insurance coverage or contributing to a deferred compensation plan such as a tax shelter annuity (TSA), the amount expended for insurance premiums must be reported as taxable income. If we make no change in the structure of our current health and welfare benefit program, then we must begin reporting insurance premiums as taxable income.

This situation can be avoided by implementing a cafeteria plan pursuant to the requirements of Section 125 of the Internal Revenue Code. Such a plan is commonly called a "Section 125 Plan."

Under the provisions of IRC Section 125, the District would continue to contribute a fixed amount (currently \$4,275) for employee health and welfare benefits. Employees may continue to elect insurance coverage from a cafeteria style plan with several different providers and types of insurance available.

The major difference from our current benefit plan structure occurs when an employee uses either more or less than the District contribution amount. In the case where less than the District contribution is utilized, any remaining amount may be received as a cash option. Such amounts received by the employee are treated as taxable income unless the employee elects to put the money into a TSA through a Salary Reduction Agreement (payroll deduction).

On the other hand, the employee who is currently paying for insurance coverages over and above the District contribution may now pay these amounts with pre-tax dollars, also through payroll deductions.

A Section 125 Plan of the type described is often referred to as a "Premium Only" Plan, because it allows only for the payment of insurance premiums with pre-tax dollars. IRC Section 125 also permits the payment of non-reimbursed medical expenses and dependent care assistance (child care, care for the elderly, etc.) with pre-tax dollars. However, the addition of these components to a Section 125 Plan greatly increases administrative complexity and cost, and is therefore not recommended.

In order to implement a Section 125 Plan, a Board resolution adopting a written plan document is required. Administration is currently working with attorneys to prepare these documents, and we are also researching the technical aspects of the payroll system changes required to accommodate such a program. Since this is clearly a negotiable issue with Classified and Certificated personnel, it is not appropriate for the Board to take any action regarding bargaining unit personnel. However, these concepts for modifying the District's current health and welfare program were discussed with Management/Confidential personnel in an Administrative Council Meeting on Wednesday, May 27, 1992. That group has expressed a preference for implementing a Section 125 Plan. It is recommended that the Board authorize Administration to proceed with the implementation of a "Premium Only" Section 125 Cafeteria Plan for Management/Confidential personnel.

F. Review and Act on Timely School Facility Matters

- * 1. Confirm Easement Grant at Mira Loma Middle School (Mr. Edmunds)

New construction and rehabilitation projects frequently require easements for public utilities or the County Road Department. At the Board Meeting of June 22, 1987, the Assistant Superintendent Business Services was authorized to grant necessary easements in order that orderly and timely progress could continue on various projects. The Board authorization requires such easement grants to be reported back for confirmation approval. The Assistant Superintendent has approved an easement grant for Mira Loma Middle School for the County of Riverside Transportation Department, as shown on the drawing in the supporting documents. It is recommended the Board confirm this action.

2. Hear and/or Approve School Facility Matters (Dr. Wilson)

Due to frequent changes taking place in facility improvement programs, items which require Board discussion or action may arise between agenda preparation and meeting times. Administration may provide such items as verbal information reports or recommendations for action.

G. Act on Student Discipline Matters (Mr. Taylor)

- ** 1. Administration recommends to revoke the suspension of the expulsion in Discipline case #92/18 and enforce the original expulsion order.
- ** 2. The Administrative Hearing Panel recommends the expulsion of the pupil in Discipline Case #92/66 for violation of Education Code 48900 (b & k).
- ** 3. The Administrative Hearing Panel recommends the expulsion of the pupil in Discipline Case #92/67 for violation of Education Code 48900 (b & k).

- * H. Approve Personnel Report #23 (Mr. Campbell)

Administration recommends approval of Personnel Report #23 as printed subject to corrections and changes resulting from review in Closed Session.

I. Approve Routine Action Items by Consent

Administration recommends the Board approve Routine Action Items I 1-5 as printed.

- * 1. Purchase Orders (Mrs. Reul)
- * 2. Disbursement Orders (Mrs. Reul)
- * 3. Appropriation Transfers (Mrs. Reul)
- * 4. Agreements (Mr. Edmunds)

I. Approve Routine Action Items by Consent (Cont'd)

5. Rejection of Claims

(Mr. Edmunds)

On April 29, 1992, Administration received a claim from Howard M. Haig alleging his truck was damaged by tire tread from a blowout by one of our District school buses. Administration recommends rejection of the claim with appropriate notice to the district insurance carrier. (A copy of the letter is available for Board review.)

On May 4, 1992, Administration received a claim from David C. McPherson alleging his vehicle was dented by a ball coming from a school baseball field while driving on Etiwanda. Administration recommends rejection of the claim with appropriate notice to the district insurance carrier. (A copy of the letter is available for Board review.)

J. Review Routine Information Reports

1. Review State Elementary Grades Task Force Report

(Mrs. Roberts)

During the past five years, State Superintendent, Bill Honig has organized several task forces to study and make recommendations regarding various levels of schooling in California. Each of these reports was commissioned in response to the national focus on school reform. A new report, It's Elementary was sent to each elementary school last month. This report follows much the same format as the three prior documents, Here They Come Ready or Not, Caught in the Middle and Second to None. The first two reports helped activate reform of early childhood and middle grade education by focusing attention on the unique developmental needs of children at these ages. The high school report, Second to None, issued earlier this school year highlights the need to prepare students for postsecondary opportunities by strengthening links with business and higher education. Both comprehensive high schools incorporated many of the suggestions from this report into their 1274 restructuring grant proposals.

According to Superintendent Honig, the It's Elementary has three underlying themes: "to help youngsters get it right the first time; to help students make the transition to a more rigorous curriculum in the upper elementary grades, and to provide a more effective safety net that catches students before they fall too far behind." In a recent article in the California Association of School Administrators publication, EDCAL, the editor suggests that many of the recommendations do not require additional funding. Among these proposals are such ideas as "Make a rich, meaning-centered, thinking curriculum the centerpiece of instruction, have teachers master a single subject area in depth and use a team-teaching strategy, intervene early to prevent learning problems and avoid grade level retention, ensure that limited English proficient students have access to the thinking curriculum, aggressively recruit teachers from ethnically diverse backgrounds, support new teachers and make students feel that they are a part of a caring school community and solicit active parent involvement." Other recommendations will cost extra money and these include "building a system of authentic performance-based assessments that measure the full scope of the curriculum, coordinating human services at the school to ensure that the basic physical and emotional needs of children are being met and assess limited English-proficient students in their home language."

J. Review Routine Information Reports

1. Review State Elementary Grades Task Force Report (Cont'd)

The full report contains thirty eight recommendations. Many of these suggestions are currently a part of the school level plans which will be presented to the Board at the second meeting in June. Administration anticipates that after the reports are studied by the staff other changes which seem appropriate for students in Jurupa will be incorporated into future school improvement plans. Information Only.

* 2. Review Minutes of Consolidated Application Meeting (Mrs. Roberts)

The minutes of the Consolidated Application meeting #4 held on May 13, 1992 are included in the supporting documents for the Board's Review.

* 3. Cafeteria Fund Financial Report for the Period Ending March 31, 1992 (Mr. Edmunds)

** 4. Receive Reports Pursuant to Education Code #48915.

Education Code #48915 requires that when a school principal determines that expulsion is inappropriate for specific student discipline violations the principal will report in writing to the Governing Board. Such reports are included in the supporting documents for Board members only.

ADJOURNMENT

DEPARTMENT OF CALIFORNIA HIGHWAY PATROL
SAFETY COMPLIANCE REPORT
MOTOR CARRIER SAFETY OPERATIONS
CHP 343 (Rev 4-89) OPI 062

INSPECTION LOC. (NUMBER, STREET, CITY OR COUNTY) <i>SANIT</i>	TELEPHONE NUMBER <i>360-2736</i>	AREA CODE <i>718</i>
CARRIER TYPE <i>TRUS</i>	CODE <i>5</i>	CARRIER REPRESENTATIVE'S NAME AND TITLE <i>THOMAS TRAVIS</i>

FLEET AND EMERGENCY RESOURCE INFORMATION

HM LIC. NO.	HWH REC. NO.	IMS LIC. NO.	PUC NUMBER			
EXP. DATE	EXP. DATE	EXP. DATE	REG. C.T.	HW VEH.	HW CONT.	DRIVERS
TRUCKS AND TYPES	TRAILERS AND TYPES	BUSES BY TYPE				<i>34</i>
SHOP	FUEL		SUB-AREA NUMBER	CHP 345 ISSUED	FIRST INSP. THIS YEAR	BIT
<input checked="" type="checkbox"/> YES <input type="checkbox"/> NO	<input checked="" type="checkbox"/> GAS <input type="checkbox"/> DIESEL <input type="checkbox"/> LPG	<i>.840</i>	<i>07</i>	<input type="checkbox"/>	<input checked="" type="checkbox"/> YES <input type="checkbox"/> NO	<input type="checkbox"/> YES <input checked="" type="checkbox"/> NO

INSPECTION RATINGS: S = Satisfactory U = Unsatisfactory C = Conditional UR = Unrated

MAINTENANCE PROGRAM	DRIVER RECORDS	REGULATED EQUIPMENT	HAZARDOUS MATERIALS	TERMINAL
<i>1 5 2 5 3 5 4 5</i>	<i>1 5 2 5 3 5 4 5</i>	<i>1 5 2 5 3 5 4 5</i>	<i>1 2 N/A 4</i>	<i>1 5 2 5 3 5 4 5</i>
NO. <i>20</i> TIME	NO. <i>20</i> TIME	NO. <i>45</i> TIME	TIME	TIME IN TIME OUT
CONTAINERS/TANKS	VAPOR RECOVERY SYS.	MISTER CATEGORY	DATE OF LAST:	
NO. TIME	TESTEC CERT.	<input type="checkbox"/> CARRIER <input type="checkbox"/> TERMINAL <input type="checkbox"/> BOTH	CHP 362 CHP 362A	

REQM'TS.	VIOL.	REMARKS
MAIN-TENANCE PROGRAM		<i>ANNUAL SCHOOL BUS TERMINAL</i>
DRIVER RECORDS		<i>INSPECTION & BUS CERTS</i>
DRIVER HOURS		<i>1300K-1230 1 of 4/5 VEHICLES INSPECTED HAS BEEN</i>
BRAKES	<i>-3</i>	<i>PLACED OUT OF SERVICE FOR UNSAFE CONDITION</i>
LAMPS-SIGNALS	<i>1</i>	<i>81 CROWN #47 E771223 SUSPENSION DEFECT</i>
CONNECTING DEVICES		<i>1300K-1230</i>
STEERING & SUSPENSION	<i>3</i>	<i>CARRIER'S TERMINAL RATED</i>
TIRES & WHEELS	<i>1</i>	<i>SATISFACTORY</i>
EQUIPMENT REQM'TS.	<i>16</i>	<i>CARRIER IS DIRECTED TO CORRECT NOTED DEFICIENCIES PRIOR TO FURTHER USE IN TRANSPORTING PASSENGERS</i>
CONTAINERS/TANKS		
HAZARDOUS MATERIALS		INSPECTED BY <i>Z. Cook</i> I.D. NO. <i>AS264</i> SUSPENSE DATE <i>4/9/93</i>

MOTOR CARRIER CERTIFICATION

I hereby certify that all violations described hereon and recorded on attached vehicle inspection reports (pages 1 through *25*) will be corrected in accordance with applicable provisions of the California Vehicle Code and the California Code of Regulations. An unsatisfactory rated carrier who believes the rating is not justified, may, within five calendar days of the rating, request a review by a Motor Carrier Safety Unit Supervisor.

CURRENT TERMINAL RATING <i>SATISFACTORY</i>	SIGNATURE AND TITLE <i>[Signature]</i>	DATE <i>4/12/93</i>
--	---	------------------------

ADDRESS: 4740 BROADWAY ST. CHICAGO, ILL. 60630
 DATE: 4/15/93
 CARRIER'S NAME: TRAVEL LIMITED SERVICE CENTER
 CA AND PC NUMBERS: CA 474027 PC 11518
 FCN: 11518



CERTIFICATE of ACCEPTANCE of EASEMENT
(Government Code Section 27281)

THIS INSTRUMENT IS FOR THE BENEFIT OF THE COUNTY OF RIVERSIDE AND ENTITLED TO BE RECORDED WITHOUT FEE. (GOV. CODE 6103)

FOR RECORDER'S USE

RETURN TO RIVERSIDE COUNTY SURVEYORS OFFICE.

THIS IS TO CERTIFY that the interest in real property granted by the easement dated _____ from _____

to the COUNTY OF RIVERSIDE, is hereby accepted for the purpose of vesting title in the County of Riverside on behalf of the public for public road and utility uses as part of the County Maintained Road System, subject to improvements in accordance with County standards by the undersigned on behalf of the Board of Supervisors pursuant to the authority contained in County Ordinance No. 669. Grantee consents to recordation thereof by its duly authorized officer.

Dated: _____ COUNTY OF RIVERSIDE

By: _____

Franklin E. Sherkow
Director of Transportation

EASEMENT

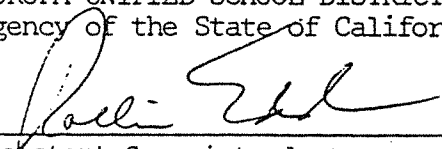
JURUPA UNIFIED SCHOOL DISTRICT, a public agency of the State of California,

grant(s) to the County of Riverside an easement for public road and drainage purposes, including public utility and public services purposes, over, upon, across, and within the real property in the County of Riverside, State of California, described as follows:

SEE LEGAL DESCRIPTION ATTACHED HERETO AS EXHIBIT "A" AND MADE A PART HEREOF

JURUPA UNIFIED SCHOOL DISTRICT, a public agency of the State of California

Dated: May 14, 1992


Assistant Superintendent President
Business Services

Secretary

*Notarized 5-14-92
#100095*



DEDICATION TO RIVERSIDE COUNTY
FOR PUBLIC ROAD PURPOSES

THAT PORTION OF THE NORTH 30 ACRES OF LOT 14 OF THE "MAP OF THE SUBDIVISION OF A PORTION OF JURUPA RANCH" AS SHOWN BY MAP ON FILE IN BOOK 9, PAGE 26 OF MAPS, RECORDS OF SAN BERNARDINO COUNTY, CALIFORNIA, SITUATED IN SECTION 15, TOWNSHIP 2 SOUTH, RANGE 6 WEST, SAN BERNARDINO MERIDIAN AND BEING MORE PARTICULARLY DESCRIBED AS FOLLOWS:

BEGINNING AT THE NORTHEAST CORNER OF SAID LOT 14 AS SHOWN BY MAP OF TRACT NO. 5037 ON FILE IN BOOK 77, PAGES 1 AND 2 OF MAPS, RECORDS OF RIVERSIDE COUNTY, CALIFORNIA;

THENCE ON THE EAST LINE OF SAID LOT 14 SOUTH $00^{\circ}14'26''$ EAST A DISTANCE OF 300.00 FEET TO THE NORTHEAST CORNER OF THAT PARCEL OF LAND DESCRIBED IN DEED TO RIVERSIDE COUNTY RECORDED 13 NOVEMBER 1961 AS INSTRUMENT NO. 97663, OFFICIAL RECORDS OF RIVERSIDE COUNTY, CALIFORNIA;

THENCE ON THE NORTH LINE OF SAID PARCEL OF RIVERSIDE COUNTY SOUTH $89^{\circ}46'43''$ WEST A DISTANCE OF 25.00 FEET TO THE NORTHWEST CORNER THEREOF;

THENCE ON THE WEST LINE OF SAID PARCEL OF RIVERSIDE COUNTY SOUTH $00^{\circ}14'26''$ EAST A DISTANCE OF 689.50 FEET TO THE SOUTH LINE OF THE NORTH 30 ACRES OF SAID LOT 14; SAID SOUTH LINE ALSO BEING THE NORTH LINE OF SAID TRACT NO. 5037;

THENCE ON SAID SOUTH LINE OF THE NORTH 30 ACRES SOUTH $89^{\circ}45'13''$ WEST A DISTANCE OF 8.00 FEET TO A LINE WHICH IS PARALLEL WITH AND 8.00 FEET WEST OF THE WEST LINE OF SAID PARCEL OF RIVERSIDE COUNTY;

THENCE ON SAID PARALLEL LINE NORTH $00^{\circ}14'26''$ WEST A DISTANCE OF 372.10 FEET TO THE BEGINNING OF A CURVE CONCAVE TO THE WEST AND HAVING A RADIUS OF 817.00 FEET;

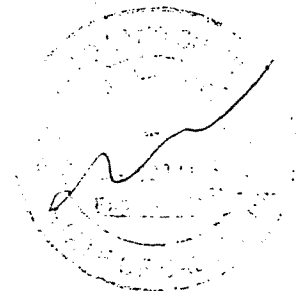
THENCE NORTHERLY ALONG SAID CURVE THROUGH A CENTRAL ANGLE OF $11^{\circ}18'28''$ AN ARC DISTANCE OF 161.24 FEET TO THE BEGINNING OF A REVERSE CURVE CONCAVE TO THE EAST HAVING A RADIUS OF 883.00 FEET. A RADIAL LINE THROUGH SAID BEGINNING OF REVERSE CURVE BEARS SOUTH $78^{\circ}27'06''$ WEST;

THENCE NORTHERLY ALONG SAID CURVE THROUGH A CENTRAL ANGLE OF $11^{\circ}18'28''$ AN ARC DISTANCE OF 174.27 FEET TO A TANGENT LINE WHICH IS PARALLEL WITH AND 66.00 FEET EAST OF THE EAST LINE OF SAID LOT 14;

THENCE ON SAID PARALLEL LINE NORTH $00^{\circ}14'26''$ WEST A DISTANCE OF 284.05 FEET TO THE NORTH LINE OF SAID LOT 14;

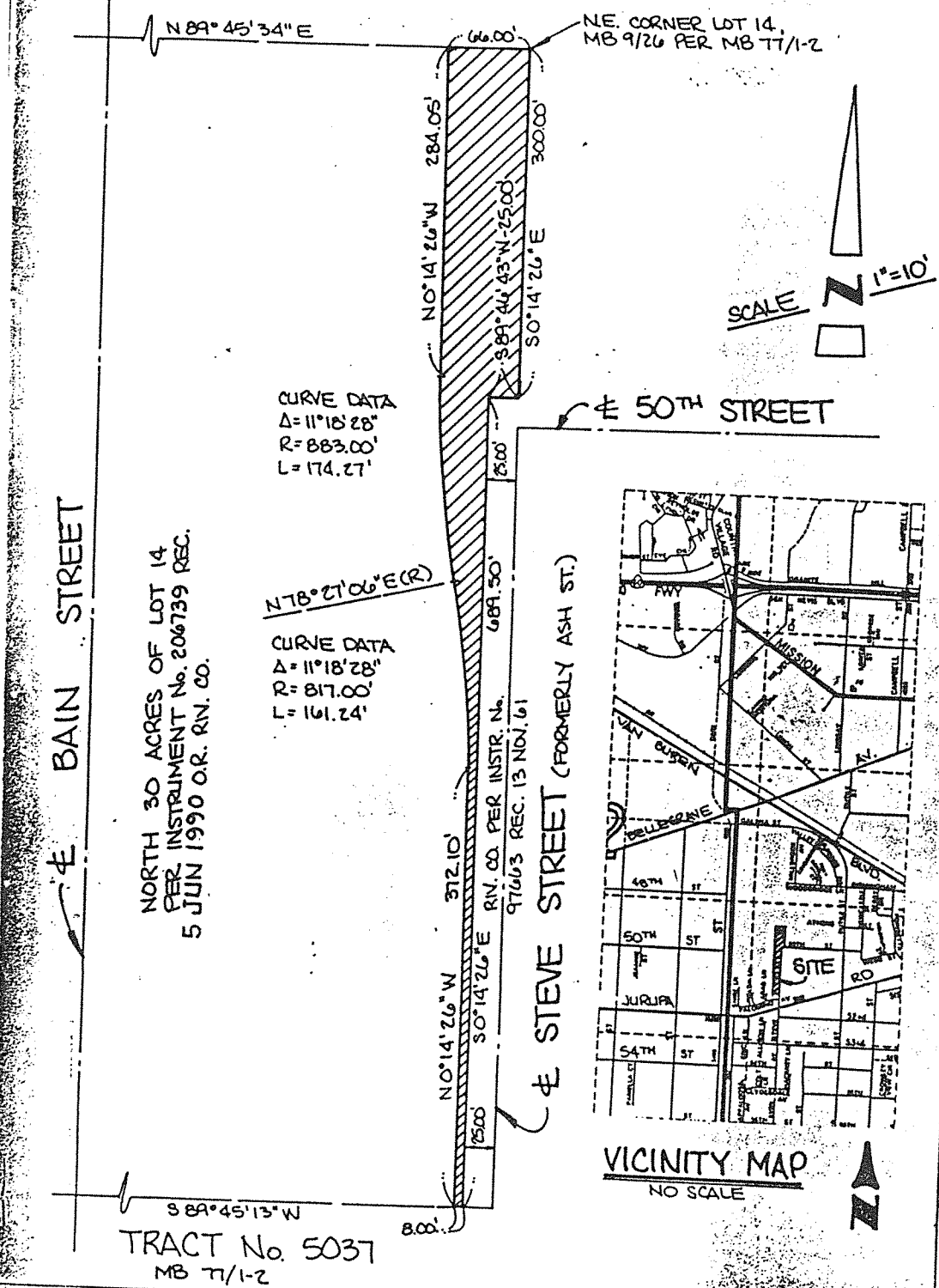
THENCE ON SAID NORTH LINE NORTH $89^{\circ}45'34''$ EAST A DISTANCE OF 66.00 FEET TO THE POINT OF BEGINNING.

CONTAINS 0.697 ACRE, MORE OR LESS.

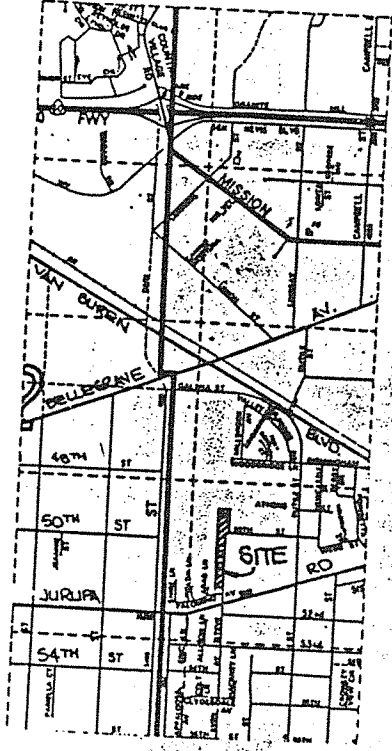


F-1
Pg 2

RIGHT-OF-WAY DEDICATION



NORTH 30 ACRES OF LOT 14
 PER INSTRUMENT No. 206739 REC.
 5 JUN 1990 O.R. R.N. CO.



TRACT No. 5037
 MB 77/1-2

COUNTY OF RIVERSIDE, CALIFORNIA
 ROAD AND SURVEY DEPARTMENT

SCALE	PREPARED BY	DATE	PROJECT
THIS PLAT IS SOLELY AN AID IN LOCATING THE PARCELS DESCRIBED IN THE ATTACHED DOCUMENT. IT IS NOT A PART OF THE WRITTEN DESCRIPTION THEREIN.			SHEET

F-1
 293

Jurupa Unified School District

Personnel Report #23

June 1, 1992

CERTIFICATED PERSONNEL

Voluntary Reduction to Part-time Status

Teacher Ms. Linda Yriarte From 100% to 50%

Extra Compensation Assignment

Instructional Services; mentor teacher selection process; May 8-11, 1992; not to exceed two (2) hours each; appropriate hourly rate of pay.

Malcolm Butler Ellen Finan Arrinita Holloway
Fran Rice

Instructional Services; preschool/head start recruitment; June 1-12, 1992; not to exceed 16 hours total; appropriate hourly rate of pay.

Virginia Schanz

Instructional Services; prepare for start of preschool classes; August 17, 1992 through September 30, 1992; not to exceed 40 hours total; appropriate hourly rate of pay.

Virginia Schanz

Mission Bell Elementary; 1991-92 school year; elementary group leader; appropriate annual rate of pay.

DeAnn McWilliams Jane Stembridge

Sunnyslope Elementary; 1991-92 school year; elementary group leader; appropriate annual rate of pay.

Barbara Martin Anne Draper Sue Tsuyuki

Sunnyslope Elementary; 1991-92 school year; combination classes; appropriate annual rate of pay.

Veronica Capata

Sunnyslope Elementary; 1991-92 school year; to serve as a Spanish Language Translator; appropriate annual rate of pay.

Mireya Hicks

Substitute Assignment

Teacher Ms. Jo Anna Haspels As needed
979 Ford Single Subject-Home Economics
Corona, CA 91719 and English Credential

(H
751)

CERTIFICATED PERSONNEL (Continued)

Substitute Assignment (Continued)

Teacher	Mr. Robert Hemminger 4262 Ridgewood Drive Riverside, CA 92509	As needed Emergency P-12 Credential
---------	---	--

Leave of Absence

Teacher	Ms. Julie Kain 6120 Port Au Prince Riverside, CA 92506	Correction of Maternity Leave dates to April 15, 1992 through May 27, 1992 with use of sick leave benefits.
---------	--	--

Teacher	Ms. Karen Lancaster 11205 Clara Court Riverside, CA 92505	Correction of Maternity Leave dates to May 28, 1992 through June 19, 1992 with use of sick leave benefits.
---------	---	---

Teacher on Special Assignment	Ms. Lorraine Mooney 4158 Oakwood Place Riverside, CA 92506	Maternity Leave effective August 31, 1992 through October 2, 1992 with use of sick leave benefits.
----------------------------------	--	---

Teacher	Ms. Christine Nielsen 2708 Ridgeline Corona, CA 91720	Unpaid Special Leave August 31, 1992 through August 31, 1993 without compensation, health & welfare benefits or incre- ment advancement.
---------	---	---

"Golden Handshake" Retirement Program

Nurse	Ms. Joene Handen 4477 6th Street Riverside, CA 92501	Retiring prior to the 1992-93 school year.
-------	--	---

Resignation

Nurse	Ms. Joene Handen 4477 6th Street Riverside, CA 92501	Effective June 19, 1992
-------	--	-------------------------

CLASSIFIED PERSONNEL

Substitute Assignment

Secretary	Ms. Angela Chavez 14970 Rosemary Drive Fontana, CA 92335	As needed
Clerk-Typist	Ms. Toni Osborne 4636 Beverly Court Riverside, CA 92506	As needed
Night Attendance Caller	Mr. Humberto Regaldo 4086 Royalty Road Riverside, CA 92509	As needed

Short-Term/Extra Work

Instructional Services; prepare for start of preschool classes; August 17, 1992 through September 30, 1992; not to exceed 80 hours total; appropriate hourly rate of pay.

Instructional Aide Celia Diaz

Instructional Services; prepare for start of preschool classes; August 13-19, 1992; not to exceed 40 hours total; appropriate hourly rate of pay.

Clerk-Typist Judy Wigg

Instructional Services; peak load assistance for end-of-year preschool program; July 1-30, 1992; not to exceed 80 hours total; appropriate hourly rate of pay.

Admin. Secretary Teresa Moreno

Instructional Services; preschool/head start recruitment; June 1-12, 1992; not to exceed 16 hours each; appropriate hourly rate of pay.

Instructional Aide Celia Diaz
Instructional Aide Toni Gomez

Placement on 39-Month Reemployment List
(Education Code #45195)

Clerk-Typist	Ms. Mary Hickey 5053 Agate Street Riverside, CA 92509	Effective May 17, 1992
--------------	---	------------------------

Resignation

Instructional Aide	Ms. Miehelle Moreno 6713 Lopez Avenue Riverside, CA 92509	Effective June 19, 1992
--------------------	---	-------------------------

Clerk-Typist	Ms. Mary Roper 6029 Palm #21 Riverside, CA 92506	Effective June 19, 1992
--------------	--	-------------------------

H
P93

Personnel Report #23

MANAGEMENT PERSONNEL

Short-Term/Extra Work

Instructional Services; peak load assistance for end-of-year preschool program;
July 1-30, 1992; not to exceed 80 hours total; appropriate hourly rate of pay.

Program Assistant Marsha Willis

H
794

OTHER PERSONNEL (Non-Management Personnel Not Represented by a Bargaining Unit)

Substitute Assignment


Activity Supervisor	Mr. Robert Bustos 5243 Odell Street Riverside, CA 92509	As needed
Activity Supervisor	Ms. Christina Madrid 2081 Gail Drive Riverside, CA 92509	As needed
Activity Supervisor	Ms. Diane Pearson 7450 Peggy Avenue Riverside, CA 92509	As needed

Short-Term Assignment

Rubidoux High School; to serve as a Vocational Education Assistant; May 5, 1992 through June 26, 1992; not to exceed 20 hours per week; \$7.18 per hour.

Linda Lamb

The above actions are recommended for approval



Kent Campbell, Assistant Superintendent-Personnel Services

H
pg 5

RIVERSIDE REGIONAL EDUCATION DATA CENTER

REPORT OF PURCHASES
 05/04/92 - 05/17/92
 PURCHASES OVER \$200

COUNTY: 33 RIVERSIDE
 DISTRICT: 46 JURUPA UNIFIED

REF	FUND	LOC/SITE	PROGRAM	VENDOR	DESCRIPTION	AMOUNT
				PURCHASE ORDERS TO BE RATIFIED		
P70389	100	178 00	DISTRICT ADMINISTRATION	DMA CONCEPTS	PRINT SHOP-OFFICE SUPPLIES	313.94
P70922	100	178 00	PLANT OPERATIONS	CORONA CLAY COMPANY	MOT-GROUNDS SUPPLIES	740.78
P70925	100	178 00	DISTRICT WAREHOUSE	NASHUA CORP	WHSE-STOCK	2,325.32
P70926	100	178 00	DISTRICT WAREHOUSE	UNIVERSITY COPY SYSTEMS, IN	WHSE-STOCK	962.21
P70928	100	178 00	DISTRICT WAREHOUSE	BETTERTYPE RIBBONS, INC.	WHSE-STOCK	382.73
P70934	100	178 00	DISTRICT ADMINISTRATION	TRICO DISPOSAL	MAINT-EC-RENTAL OF DUMPSTER	314.00
P71014	100	191 00	FINE ARTS - MUSIC	ALTA LOMA MUSIC STORE	MMS-MUSICAL INSTRUMENTS	414.57
P71015	100	178 00	DISTRICT ADMINISTRATION	SCOTSMAN	EC-OFFICE TRAILER	839.76
P71018	100	196 00	FINE ARTS - ART	STEWART'S OF CALIF., INC.	RHS-INSTRUCTIONAL MATERIALS	314.93
P71019	100	178 00	DISTRICT ADMINISTRATION	STOCKWELL & BINNEY (#5236	EC-OFFICE SUPPLIES	500.00
P71026	100	178 00	DISTRICT ADMINISTRATION	MULTIGRAPHICS(DIV OF AM INT	PRINT SHOP-OFFICE SUPPLIES	218.52
P71041	100	178 00	DISTRICT ADMINISTRATION	UNISYS CORPORATION	EC-OFFICE SUPPLIES	272.61
P71043	100	181 00	SELF-CONTAINED CLASSROOM	BURTRONICS (MARTIN BUS. MAC	MB/WR-INSTRUCTIONAL MATERIALS	890.23
P71044	100	196 00	GENERAL EDUCATION - SECONDARY	JOSTEN'S - CAP & GOWN ORDER	RHS-COMMENCEMENT SUPPLIES	294.97
P71057	100	196 00	VOC ED-AGRICULTURE	F & W SMITH CO.	RHS-OPEN PO-INSTRUCTIONAL MATERIALS	412.00
P71058	100	178 00	PLANT OPERATIONS	PRUDENTIAL OVERALL SUPPLY	MAINT-OPEN PO-RENTAL SHOP TOWELS	3,000.00
P71061	100	183 00	SELF-CONTAINED CLASSROOM	LITTLE RED SCHOOL HOUSE	PED-INSTRUCTIONAL MATERIALS	1,000.00
P71062	100	183 00	SELF-CONTAINED CLASSROOM	CM SCHOOL SUPPLY CO.	PED-OPEN PO-INSTRUCTIONAL MATERIALS	1,000.00
P71065	100	178 00	PLANT OPERATIONS	C. R. JAESCHKE, INC.	MAINT-GROUNDS SUPPLIES	395.41
P71069	100	178 00	DISTRICT ADMINISTRATION	JOHN MARSHALL SECURITY	EC-SECURITY SERVICE	480.00
P71070	100	197 00	SCIENCE	SCANTRON	JVHS-INSTRUCTIONAL MATERIALS	506.86
P71071	100	178 00	FINE ARTS-MUSIC	J. W. PEPPER OF LOS ANGELES	EC-INSTRUCTIONAL MATERIALS	1,714.30
P71090	100	197 00	SCIENCE	SCIENCE KIT & BOREAL LABS	JVHS-INSTRUCTIONAL MATERIALS	1,229.00
P71091	100	178 00	FINE ARTS-MUSIC	ALTA LOMA MUSIC STORE	EC-INSTRUCTIONAL MATERIALS	1,476.84

F-1
 851

RIVERSIDE REGIONAL EDUCATION DATA CENTER

REPORT: APS/APS550/01
 RUN DATE: 05/21/92
 PAGE: 2

COUNTY: 33 RIVERSIDE
 DISTRICT: 46 JURUPA UNIFIED

REPORT OF PURCHASES
 05/04/92 - 05/17/92
 PURCHASES OVER \$200

REF	FUND	LOC/SITE	PROGRAM	VENDOR	PURCHASE ORDERS TO BE RATIFIED	DESCRIPTION	
P71092	100	000 00	SELF-CONTAINED CLASSROOM	FOLLETT LIBRARY BOOK CO.	MB-BOOKS		1,700.00
P71105	100	197 00	VOC ED-GAINFUL HOMEMAKING	NASCO WEST INC	JVHS-INSTRUCTIONAL MATERIALS		346.69
P71109	100	178 00	SELF-CONTAINED CLASSROOM	COMPUTER SERVICE & SALES	MAINT-COMPUTER REPAIRS		595.17
P71149	100	178 00	DISTRICT ADMINISTRATION	T. A. GROSS SYSTEMS SPECIALI	MAINT-COMPUTER REPAIRS		624.95
P71150	100	178 00	DISTRICT ADMINISTRATION	ENVIROSPECTUM INC.	EC-MDT-HAZ WASTE REMOVAL		3,020.00
P71154	100	178 00	DISTRICT ADMINISTRATION	GRAINGER W W INC	JVHS-GOGGLES		260.32
P71155	100	178 00	DISTRICT ADMINISTRATION	SARGENT-WELCH SCIENTIFIC CO	JVHS-GOGGLE CABINET		765.03
P71160	100	184 00	INSTRUCTIONAL MEDIA	DEMCO SUPPLY INC	RL-OFFICE SUPPLIES		243.94
P71164	100	178 00	DISTRICT ADMINISTRATION	SERVICE MASTER OF	EC-CLEANING SERVICES		6,041.00
P71200	100	178 00	DISTRICT ADMINISTRATION	COLLINS, NORM	EC-TELEPHONE REPAIRS		325.00
P71201	100	197 00	ATTENDANCE & WELFARE	EASTMAN PRODUCTS	JVHS-TIME RECORDER		327.29
P71203	100	197 00	GENERAL EDUCATION - SECONDARY	OFFICE CLUB 714 885-0097	JVHS-FAX PHONE		453.00
P71209	100	197 00	PHYSICAL EDUCATION	GUNTHER'S ATHLETIC SERVICE	JVHS-RECONDITION FOOTBALL EQUIP		3,756.05
P71217	100	178 00	DISTRICT ADMINISTRATION	NATIONAL HEALTH SUPPLY	EC-HEALTH SUPPLIES		214.85
P71227	100	178 00	DISTRICT ADMINISTRATION	AERO TECH SURVEYS, INC.	EC-PHOTOGRAPH OF DISTRICT AREA		2,000.00
						FUND TOTAL	40,673.27
						TOTAL NUMBER OF PURCHASE ORDERS	39
P71022	101	188 00	S.I.P. (SCHOOL IMPROVEMENT PR	GENERAL BINDING COMPANY	SC-INSTRUCTIONAL MATERIALS		365.92
P71048	101	183 00	S.I.P. (SCHOOL IMPROVEMENT PR	WEEKLY READER PERIODICALS	PED-INSTRUCTIONAL MATERIALS		218.73
P71063	101	183 00	S.I.P. (SCHOOL IMPROVEMENT PR	VON'S MARKET (LIMONITE AVE)	PED-OPEN PO-INSTRUCTIONAL MATERIALS		1,000.00
P71076	101	190 00	S.I.P. (SCHOOL IMPROVEMENT PR	TCL SALES & DISTRIBUTION	JMS-EQUIPMENT		214.42
P71080	101	178 00	MENTOR TEACHER PROGRAM	LITTLE RED SCHOOL HOUSE	EC-INSTRUCTIONAL MATERIALS		580.23
P71098	101	185 00	E.C.I.A. CHAPTER 1	GATEWAY EDUCATIONAL PRODUCT	TS-INSTRUCTIONAL MATERIALS		248.31

I-1
 P92

RIVERSIDE REGIONAL EDUCATION DATA CENTER

REPORT: APS/APS550/01
 RUN DATE: 05/21/92
 PAGE: 3

COUNTY: 33 RIVERSIDE
 DISTRICT: 46 JURUPA UNIFIED

REPORT OF PURCHASES
 05/04/92 - 05/17/92
 PURCHASES OVER \$200

REF	FUND	LOC/SITE	PROGRAM	VENDOR	PURCHASE ORDERS TO BE RATIFIED	DESCRIPTION	AMOUNT
P71110	101	178 00	MENTOR TEACHER PROGRAM	STOCKWELL & BINNEY	(#5236 EC-OFFICE SUPPLIES	500.00	
P71112	101	196 00	VOCATIONAL EDUCATION ACT PL94	TARGET STORES	RHS-OPEN PO-INSTRUCTIONAL MATERIALS	250.00	
P71114	101	196 00	VOCATIONAL EDUCATION ACT PL94	CHRONICLE GUIDANCE PUB. INC	RHS-INSTRUCTIONAL MATERIALS	468.06	
P71117	101	196 00	VOCATIONAL EDUCATION ACT PL94	EDITS	RHS-INSTRUCTIONAL MATERIALS	434.90	
P71118	101	187 00	E.C.I.A. CHAPTER 1	D.F. SCHOTT ED. MATERIALS	WR-OTHER BOOKS	310.32	
P71123	101	178 00	NON-AGENCY ACTIVITIES - EDUCA	VON'S MARKET (VAN BUREN)	EC-SUPPLIES	250.00	
P71126	101	197 00	VOCATIONAL AGRICULTURE INCENT	WESTSTEYN, BERT	JVHS-INSTRUCTIONAL MATERIALS	1,300.00	
P71128	101	187 00	S.I.P. (SCHOOL IMPROVEMENT PR	SCHOOL STOP EDUC. SUPPLIES	WR-INSTRUCTIONAL MATERIALS	417.53	
P71130	101	178 00	ECONOMIC IMPACT AID - L E P	HOUGHTON MIFFLIN CO-ORDER D	MMS-INSTRUCTIONAL MATERIALS	805.43	
P71132	101	178 00	ECONOMIC IMPACT AID - L E P	ELECTRONIC TRANSLATION SYST	EC-OFFICE SUPPLIES	568.36	
P71133	101	175 00	E.C.I.A. CHAPTER 1	TEACHERS APPLE	SS-BOOKS	247.54	
P71137	101	196 00	VOCATIONAL EDUCATION ACT PL94	READY REFERENCE PRESS	RHS-INSTRUCTIONAL MATERIALS	218.91	
P71139	101	178 00	EESA MATH & SCIENCE TCHR TRNG	DELTA EDUCATION INC	VB-TESTS	232.74	
P71141	101	184 00	E.C.I.A. CHAPTER 1	IMED	RL-EQUIPMENT	654.04	
P71146	101	197 00	S81274 RESTRUCTURING/PLANNING	COMPUTER SERVICE & SALES	JVHS-COMPUTER REPAIR	636.08	
P71147	101	182 00	S.I.P. (SCHOOL IMPROVEMENT PR	APPLE COMPUTER-SUPPORT CENT	PA-COMPUTER EQUIPMENT	1,825.61	
P71152	101	175 00	E.C.I.A. CHAPTER 1	APPLE COMPUTER-SUPPORT CENT	SS-COMPUTER	1,966.44	
P71186	101	187 00	S.I.P. (SCHOOL IMPROVEMENT PR	TAM'S INC.	WR-INSTRUCTIONAL MATERIALS	1,622.93	
P71187	101	196 00	TOBACCO USE PREVENTION EDUCAT	HEALTH ED. SERVICES	RH-INSTRUCTIONAL MATERIALS	395.55	
P71188	101	196 00	TOBACCO USE PREVENTION EDUCAT	WARDS NATURAL SCIENCE	RH-INSTRUCTIONAL MATERIALS	294.16	
P71191	101	184 00	E.C.I.A. CHAPTER 1	APPLE COMPUTER-SUPPORT CENT	RL-INSTRUCTIONAL MATERIALS	206.88	
P71192	101	187 00	E.C.I.A. CHAPTER 1	VON'S MARKET (LIMONITE AVE)	WR-OPEN PO-INSTRUCTIONAL MATERIALS	500.00	
P71193	101	185 00	S.I.P. (SCHOOL IMPROVEMENT PR	FIESTA VILLAGE	TS-ADMISSION FEES	535.00	
P71194	101	187 00	E.C.I.A. CHAPTER 1	IMAGINE THAT	WR-BOOKS	436.96	

I-1
 33

RIVERSIDE REGIONAL EDUCATION DATA CENTER

REPORT: APS/APS550/01
 RUN DATE: 05/21/92
 PAGE: 4

COUNTY: 33 RIVERSIDE
 DISTRICT: 46 JURUPA UNIFIED

REPORT OF PURCHASES
 05/04/92 - 05/17/92
 PURCHASES OVER \$200

REF	FUND LOC/SITE	PROGRAM	VENDOR	DESCRIPTION	
			PURCHASE ORDERS TO BE RATIFIED		
P71195	101 187 00	S.I.P. (SCHOOL IMPROVEMENT PR NATIONAL GEOGRAPHIC ED SERV	WR-INSTRUCTIONAL MATERIALS		1,508.50
P71196	101 187 00	S.I.P. (SCHOOL IMPROVEMENT PR VOYAGER CO.	WR-INSTRUCTIONAL MATERIALS		215.50
P71204	101 190 00	S.I.P. (SCHOOL IMPROVEMENT PR FEDCO (ONTARIO 714 947-8300	JMS-TV		430.97
P71210	101 179 00	E.C.I.A. CHAPTER 1	COMPUTER SERVICE & SALES	MAINT-COMPUTER REPAIRS	337.65
P71214	101 175 00	E.C.I.A. CHAPTER 1	IMED	SS-FILMSTRIP PROJECTOR	325.41
P71218	101 178 00	S.I.P. (SCHOOL IMPROVEMENT PR MCGRATHS		EC-SUPPLIES	234.36
P71219	101 182 00	E.C.I.A. CHAPTER 1	LITTLE RED SCHOOL HOUSE	PA-INSTRUCTIONAL MATERIALS	300.00
P71220	101 190 00	S.I.P. (SCHOOL IMPROVEMENT PR IMED		JMS-EQUIPMENT	317.32
				FUND TOTAL	21,374.76
				TOTAL NUMBER OF PURCHASE ORDERS	38
P71170	102 186 00	SDC LEARNING HANDICAPPED (LH) KNOTT'S BERRY FARM, ED. PRG	VB-ADMISSION FEE		244.95
				FUND TOTAL	244.95
				TOTAL NUMBER OF PURCHASE ORDERS	1
P70874	103 178 00	PUPIL TRANSPORTATION	ANTISTA DIESEL REPAIR	TRANS-OVERHAUL ENGINE	12,435.57
P70933	103 178 00	PUPIL TRANSPORTATION	SPARKLETT'S DRINKING WATER C	TRANS-OPEN PO-BOTTLED WATER	800.00
P71148	103 178 00	GIFTED AND TALENTED EDUCATION J.W. PEPPER OF LOS ANGELES	JVHS-OPEN PO-INSTRUCTIONAL MATERIALS		300.00
				FUND TOTAL	13,535.57
				TOTAL NUMBER OF PURCHASE ORDERS	3
P70802	119 178 00	PLANT MAINTENANCE	CAREY BUILDING SUPPLIES	MAINT-SUPPLIES	400.00
P70923	119 178 00	PLANT MAINTENANCE	THOMPSON ENGINEERING CO	MAINT-SUPPLIES	1,240.85
P70924	119 178 00	PLANT MAINTENANCE	KELLY-MOORE	MAINT-SUPPLIES	549.93

I-1
 754

RIVERSIDE REGIONAL EDUCATION DATA CENTER

REPORT: APS/APSS50/01
 RUN DATE: 05/21/92
 PAGE: 5

COUNTY: 33 RIVERSIDE
 DISTRICT: 46 JURUPA UNIFIED

REPORT OF PURCHASES
 05/04/92 - 05/17/92
 PURCHASES OVER \$200

REF	FUND	LOC/SITE	PROGRAM	VENDOR	DESCRIPTION	
					PURCHASE ORDERS TO BE RATIFIED	
P71047	119	178 00	PLANT MAINTENANCE	ELROD FENCING CO.	MAINT-SUPPLIES	255.61
P71049	119	178 00	PLANT MAINTENANCE	HOME DEPOT-ACCT #7901435-9	MAINT-OPEN PO-SUPPLIES	2,500.00
P71050	119	178 00	PLANT MAINTENANCE	WESTBURNE PIPE & SUPPLY	MAINT-OPEN PO-SUPPLIES	500.00
P71052	119	178 00	PLANT MAINTENANCE	EMPIRE GLASS & MIRRORS	MAINT-REPAIR GLASS	232.40
P71059	119	178 00	PLANT MAINTENANCE	FRAMCO HOME CENTER	MAINT-SUPPLIES	750.00
P71093	119	178 00	PLANT MAINTENANCE	ARROW AIR CONDITIONING	MAINT-SUPPLIES	269.38
P71185	119	178 00	PLANT MAINTENANCE	ACI GLASS PRODUCTS	MAINT-SUPPLIES	2,139.11
P71190	119	178 00	PLANT MAINTENANCE	CARRIER COMPANY	MAINT-SUPPLIES	230.93
P71198	119	178 00	PLANT MAINTENANCE	AIR COLD SUPPLY INC	MAINT-REFRIGERANT	1,993.38
P71208	119	178 00	PLANT MAINTENANCE	ELROD FENCING CO.	MAINT-SUPPLIES	1,072.03
					FUND TOTAL	12,133.62
					TOTAL NUMBER OF PURCHASE ORDERS	13
P71161	390	173 11	FACILITIES	CREATIVE PUBLICATIONS	GH-EQUIPMENT	1,667.97
P71162	390	173 11	FACILITIES	DIDAX EDUCATIONAL RESOURCES	GH-EQUIPMENT	682.06
P71163	390	173 11	FACILITIES	ETA	GH-EQUIPMENT	371.68
					FUND TOTAL	2,721.71
					TOTAL NUMBER OF PURCHASE ORDERS	3
P71119	700	178 00	STATE PRESCHOOL AB-451	ALIN PAPER CO.	EC-OPEN PO-OFFICE SUPPLIES	250.00
P71144	700	178 00	STATE PRESCHOOL AB-451	CM SCHOOL SUPPLY CO.	RL-INSTRUCTIONAL MATERIALS	2,121.78
P71145	700	178 00	STATE PRESCHOOL AB-451	CM SCHOOL SUPPLY CO.	WR-INSTRUCTIONAL MATERIALS	499.37
					FUND TOTAL	2,871.15
					TOTAL NUMBER OF PURCHASE ORDERS	3

NO RATIFIED P.O.'S FOUND

II-85

RIVERSIDE REGIONAL EDUCATION DATA CENTER

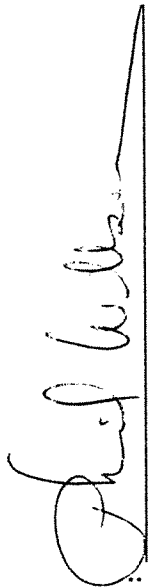
COUNTY: 33 RIVERSIDE
 DISTRICT: 46 JURUPA UNIFIED

REPORT: APS/APS550/01
 RUN DATE: 05/21/92
 PAGE: 1

REPORT OF PURCHASES

05/04/92 - 05/17/92
 PURCHASES OVER \$200

REF	FUND	LOC/SITE	PROGRAM	VENDOR	DESCRIPTION	
					PURCHASE ORDERS TO BE RATIFIED	
					100 PURCHASE ORDERS OVER	\$200.00 FOR A TOTAL AMOUNT OF + 93,555.03
					100 PURCHASE ORDERS UNDER	\$200.00 FOR A TOTAL AMOUNT OF + 9,262.07
					200 PURCHASE ORDERS	FOR A GRAND TOTAL OF 102,817.10

RECOMMEND APPROVAL: 
 Director of Purchasing

I-1
 936

Jurupa Unified School District

CAFETERIA FUND

Purchase Orders Less Than \$200:

16511, 16516, 16518, 16525,
16528, 16531, 16543, 16544

Total Orders Less Than \$200.00: \$785.35

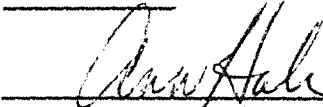
Purchase Orders More Than \$200:

<u>P.O.#</u>	<u>Vendor</u>	<u>Amount</u>	<u>Location/Description</u>
16498	Dairy Fresh	\$4,683.11	Whse-Food
16499	Ann Hale	421.40	Conference reimbursement
16500	The Popcorn Man	1,780.00	Whse-Food
16501	A & R Wholesale	1,915.33	JMS/MMS/RHS/JVHS/Whse-Soda & Chips
16502	Tower of Pizza	1,332.00	Various school sites-Pizza
16503	Chino Valley Produce	935.29	All Schls-Produce
16504	Foothill Properties	1,419.50	All Schls-Oranges
16505	GCS Service	321.11	MMS-Parts to repair steamer
16507	Chino Valley Produce	1,110.74	All Schls-Produce
16508	Leabo Foods Inc.	2,857.70	Whse-Food
16510	Proficient Paper Co.	1,285.83	Whse-Supplies
16512	Tower of Pizza	918.00	Various school sites-Pizza
16514	T.S. Gross Systems Specialists	790.07	FS-Repair IBM-PC
16515	GCS Service	238.96	MMS-Parts to repair steamer
16517	P & R Paper	406.87	Whse-Supplies
16519	Proficient Paper Company	2,269.67	Whse-Supplies
16521	Chino Valley Produce	1,558.24	All Schls-Produce
16522	Leabo Foods Inc.	1,955.07	Whse-Food
16523	MPC Marketing	750.00	Whse-Food
16526	Tower of Pizza	1,248.00	Various school sites-Pizza
16527	A & R Wholesale	6,616.46	JMS/MMS/RHS/JVHS/Whse-Soda & Chips
16529	Driftwood Dairy	23,763.45	All Schls-Milk and by-products
16530	Proficient Paper Co.	946.81	Whse-Supplies
16532	Dairy Fresh	7,123.80	Whse-Food
16533	Moreno Brothers	907.93	All Schls-Tortillas
16534	Gold Star Foods	17,007.18	Whse-Food
16535	Leabo Foods Inc.	2,024.88	Whse-Food
16536	Kraft/Keeler	3,126.17	Whse-Food/Supplies
16537	Chino Valley Produce	1,334.33	All Schls-Produce
16539	Leabo Foods Inc.	264.00	Whse-Food
16541	Tower of Pizza	1,194.00	Various school sites-Pizza
16542	Good Stuff Food Co.	2,578.45	All Schls-Bread & Rolls
16545	Leabo Foods Inc.	3,870.00	Whse-Food
16546	S & W Fine Foods	1,039.00	Whse-Food
16547	Continental Baking Co.	2,522.80	JMS/MMS/RHS/JVHS-Cakes & Pies
16548	S.E. Rykoff	335.16	Whse-Food/Supplies

Total Orders More Than \$200.00 \$102,851.31

Grand Total Cafeteria Fund 600: \$103,636.66

Recommend Approval


Ann Hale, Director Food Services

AH:cc



RIVERSIDE REGIONAL EDUCATION DATA CENTER

REPORT: APS/APS550/01
 RUN DATE: 05/21/92
 PAGE: 1

COUNTY: 33 RIVERSIDE
 DISTRICT: 46 JURUPA UNIFIED

REPORT OF PURCHASES
 05/04/92 - 05/17/92
 PURCHASES OVER \$1

DISBURSEMENT ORDERS

REF	FUND	LOC/SITE	PROGRAM	VENDOR	DESCRIPTION	AMOUNT
D13384	100	178 00	DISTRICT ADMINISTRATION	HARVEY'S LAKE TAHOE	D13048 CONF LODGING 5/20-22/92 1 EMP	194.40
D13385	100	178 00	NON-AGENCY ACTIVITIES - EDUCA	CATAMARAN	D13046 CONF LODGING 5/11-13/92 1 EMP	172.22
D13386	100	178 00	DISTRICT ADMINISTRATION	CAMPBELL, KENT	D13045 REIMB CONF 3/25-27/92 1 EMP	149.81
D13387	100	178 00	DISTRICT ADMINISTRATION	C.A.S.H. (COALITION ADEQ.SC	D13047 CONF 5/20-22/92 1 EMP	155.00
D13388	100	000 00	SELF-CONTAINED CLASSROOM	RIVERSIDE CO. OFFICE OF EDU	D13050 CONF 5/26/92 2 EMP	80.00
D13391	100	178 00	DISTRICT ADMINISTRATION	TWONBLEY, JANA	D13052 REIMB CONF 4/21-25/92 1 EMP	5.40
D13392	100	178 00	DISTRICT ADMINISTRATION	TAYLOR, JIM	D13053 REIMB CONF 4/21-25/92 1 EMP	5.40
D13393	100	196 00	SCIENCE	FULLER, RHONDA	D13054 REIMB CONF 5/2-5/92 1 EMP	125.00
D13394	100	178 00	DISTRICT ADMINISTRATION	WILSON, JOHN P.	D13056 REIMB CONF 6/12/92 1 EMP	20.00
D13435	100	191 00	FINE ARTS - MUSIC	BROCKHAUS, JAMIE	D13063 REIMB CONF 4/2-4/92 1 EMP	60.00
D13436	100	186 00	SELF-CONTAINED CLASSROOM	MILLER, BERNICE	D13078 REIMB CONF 5/8-9/92 1 EMP	115.00
D13437	100	178 00	PLANT OPERATIONS	AYALA, ART	D13062 MILEAGE	15.13
D13438	100	178 00	INSTRUCTIONAL ADMINISTRATION	BRENNAN, TINA	D13064 MILEAGE	44.19
D13439	100	182 00	SELF-CONTAINED CLASSROOM	DENISE DUNCAN	D13072 REIMB LOST BOOK FEE	1.95
D13442	100	175 00	SELF-CONTAINED CLASSROOM	HALE, GARY	D13073 REIMB INSTRUCTIONAL MATERIALS	12.19
D13445	100	178 00	PLANT OPERATIONS	OZIE MARTIN	D13066 MILEAGE	49.87
D13446	100	197 00	PHYSICAL EDUCATION	MOORE, REX	D13067 MILEAGE	326.70
D13447	100	182 00	SELF-CONTAINED CLASSROOM	JANINE MUSICH	D13075 REIMB LOST BOOK FEE	7.16
D13448	100	181 00	OPERATIONS-OTHER FACILITY	MUTUAL WATER CO	D13070 APRIL 92 WATER BILL	240.00
D13449	100	178 00	OPERATIONS-OTHER FACILITY	PACTEL CELLULAR	D13061 APRIL 92 PHONE BILL	139.75
D13450	100	178 00	NON-AGENCY ACTIVITIES - EDUCA	SEAGO, NANETTE	D13068 MILEAGE	176.40
D13451	100	178 00	NON-AGENCY ACTIVITIES - EDUCA	SEAGO, NANETTE	D13076 REIMB SUPPLIES	94.21
D13452	100	176 00	OPERATIONS-OTHER FACILITY	SO CALIFORNIA EDISON	D13058 APRIL 92 ELECTRIC BILL	52,676.45
D13453	100	175 00	OPERATIONS-OTHER FACILITY	SO CALIFORNIA EDISON	D13059 APRIL 92 ELECTRIC BILL	11,684.55

I-2
 P31

RIVERSIDE REGIONAL EDUCATION DATA CENTER

REPORT: APS/APS550/01
 RUN DATE: 05/21/92
 PAGE: 2

COUNTY: 33 RIVERSIDE
 DISTRICT: 46 JURUPA UNIFIED

REPORT OF PURCHASES
 05/04/92 - 05/17/92
 PURCHASES OVER \$1

DISBURSEMENT ORDERS

REF	FUND	LOC/SITE	PROGRAM	VENDOR	DESCRIPTION	AMOUNT
D13454	100	173 00	OPERATIONS-OTHER FACILITY	SO CALIFORNIA GAS	D13079 JAN-MAR 92 GAS BILL	406.97
D13456	100	182 00	SELF-CONTAINED CLASSROOM	JULIE STEWART	D13077 REIMB LOST BOOK FEE	6.95
D13492	100	178 00	NON-AGENCY ACTIVITIES - EDUCA SEAGO, NANETTE		D13082 REIMB CONF 4/8-10,20-24/92 1	267.72
D13510	100	178 00	DISTRICT ADMINISTRATION	RCSBO	D13088 CONF 5/13/92 1 EMP	19.10
D13511	100	178 00	DISTRICT ADMINISTRATION	MAXINE LOPEZ	D13089 REFUND INSURANCE PREMIUMS	2,875.75
D13518	100	191 00	DISTRICT ADMINISTRATION	KEENAN AND ASSOCIATES	D13090 REIMB OVERPAYMENT	919.00
D13558	100	178 00	NON-AGENCY ACTIVITIES - EDUCA MATHEMATICS CONFERENCE		D13091 CONF LODGING 12/8-11/92 1 EMP	168.00
D13560	100	178 00	DISTRICT ADMINISTRATION	CALIF DEPARTMENT OF EDUCATI	D13093 CONF 5/19/92 1 EMP	20.00
D13616	100	197 33	FACILITIES	OFFICE OF STATE ARCHITECT	D13129 SAFETY PLAN CHECKS JVHS	17,626.00
D13622	100	000 00	SELF-CONTAINED CLASSROOM	BANK OF AMERICA NT&SA	D13105 MAY 92 PURCHASES	75.41
D13623	100	197 00	OPERATIONS-OTHER FACILITY	CHEVRON, U S A	D13104 APRIL 92 GASOLINE CHARGES	80.39
D13624	100	196 00	PHYSICAL EDUCATION	CLOVER, JIM	D13119 PROF SERVICES MAY 92	3,020.00
D13625	100	178 00	NON-AGENCY ACTIVITIES - EDUCA COURTNEY, MARY		D13115 MASTER TEACHER STIPEND	166.70
D13626	100	175 00	OPERATIONS-OTHER FACILITY	SO CALIFORNIA GAS	D13103 APRIL 92 GAS BILL	464.92
D13627	100	178 00	NON-AGENCY ACTIVITIES - EDUCA GONZALES, NINA		D13114 MASTER TEACHER STIPEND	166.70
D13628	100	178 00	DISTRICT ADMINISTRATION	HANEY, HELEN	D13108 MONTHLY RIDESHARE AWARD	40.00
D13629	100	178 00	NON-AGENCY ACTIVITIES - EDUCA HARRIS, MARY		D13118 MASTER TEACHER STIPEND	166.70
D13630	100	183 00	OPERATIONS-OTHER FACILITY	JURUPA COMMUNITY SERVICES	D13100 APRIL 92 WATER BILL	3,750.94
D13631	100	178 00	NON-AGENCY ACTIVITIES - EDUCA LIVERMAN, NANCY		D13116 MASTER TEACHER STIPEND	166.70
D13632	100	178 00	NON-AGENCY ACTIVITIES - EDUCA LUBAK, CONSTANCE		D13113 MASTER TEACHER STIPEND	166.70
D13633	100	178 00	NON-AGENCY ACTIVITIES - EDUCA NAGEL, CONNIE		D13117 MASTER TEACHER STIPEND	166.70
D13634	100	178 00	OPERATIONS-OTHER FACILITY	PACIFIC TELEPHONE	D13101 APR 92 PHONE BILL	132.99
D13635	100	178 00	DISTRICT ADMINISTRATION	POSTMASTER	D13099 REPLENISH POSTAGE MACHINE	2,500.00
D13636	100	178 00	OPERATIONS-OTHER FACILITY	SO CALIFORNIA EDISON	D13102 APS 92 ELECTRIC BILL	347.56

11-2
 32

RIVERSIDE REGIONAL EDUCATION DATA CENTER

REPORT: APS/APS550/01
 RUN DATE: 05/21/92
 PAGE: 3

COUNTY: 33 RIVERSIDE
 DISTRICT: 46 JURUPA UNIFIED

REPORT OF PURCHASES
 05/04/92 - 05/17/92
 PURCHASES OVER \$1

DISBURSEMENT ORDERS

REF	FUND	LOC/SITE	PROGRAM	VENDOR	DESCRIPTION	AMOUNT
D13638	100	178 00	DISTRICT ADMINISTRATION	WALLACE, BERTHA	D13109 MONTHLY RIDESHARE AWARD	40.00
D13653	100	178 00	RETIREE BENEFITS	DALE SEDERSTROM	D13130 REFUND INSURANCE PREMIUM	197.50
D13671	100	196 00	INDEPENDENT STUDY	HENDRICK, BILL	D13152 REIMB CONF 4/28, 5/1/92 1 EMP	130.35
D13719	100	178 00	DISTRICT ADMINISTRATION	ACSA/FOUNDATION	D13155 CONF 7/14/92 1 EMP	100.00
D13722	100	173 11	FACILITIES	DIVISION OF LABOR STANDARDS	D13153 C-10123 RJW CONSTR/FRAMCO CON	39,652.00
D13724	100	178 00	DISTRICT ADMINISTRATION	RCS80	D13156 CONF 5/14/92 1 EMP, 2 BD MBR	75.00
D13726	100	178 00	DISTRICT ADMINISTRATION	TWONBLEY, JANA	D13158 REIMB CONF 5/4-8/92 1 EMP	130.75
D13727	100	178 00	DISTRICT ADMINISTRATION	ACSA REGION 12 SUPTS COMMIT	D13159 CONF 5/29/92 1 EMP	22.50
D13729	100	185 00	SCHOOL ADMINISTRATION	BACA, DOROTHY	D13134 REIMB OFFICE SUPPLIES	16.14
D13730	100	188 00	SCHOOL ADMINISTRATION	BARREIRO, LAZ	D13135 REIMB OFFICE SUPPLIES	29.92
D13734	100	178 00	PLANT OPERATIONS	DICKINSON, STEVE	D13136 MILEAGE	83.97
D13736	100	178 00	PLANT OPERATIONS	DUNAWAY, LOLA D.	D13137 MILEAGE	45.87
D13738	100	184 00	SCHOOL ADMINISTRATION	LANCASTER, WALTER	D13141 REIMB OFFICE SUPPLIES	11.11
D13740	100	181 00	SCHOOL ADMINISTRATION	MCCALL, DON	D13143 REIMB OFFICE SUPPLIES	48.53
D13741	100	191 00	SOCIAL SCIENCE	MISSION MIDDLE SCHOOL ASB	D13144 REIMB INSTRUCTIONAL MATERIALS	29.87
D13742	100	000 00	SELF-CONTAINED CLASSROOM	PARKER, KIMBERLY	D13145 REIMB FIELD TRIP	29.00
D13745	100	178 00	DISTRICT ADMINISTRATION	REUL, BARBARA	D13146 MILEAGE	166.78
D13748	100	178 00	NON-AGENCY ACTIVITIES - EDUCA	SEAGO, NANETTE	D13149 REIMB PHONE BILL	83.51
D13757	100	185 00	SELF-CONTAINED CLASSROOM	WERNER, BONNIE	D13150 REIMB INSTRUCTIONAL MATERIALS	26.45
D13758	100	178 00	DISTRICT ADMINISTRATION	WILKESON, PHILIP	D13151 MILEAGE	64.18
					FUND TOTAL	141,256.11
					TOTAL NUMBER OF DISBURSEMENTS	68
D13889	101	178 00	EESA MATH & SCIENCE TCHR TRNG	HILTON - UNIVERSITY	D13051 CONF LODGING 5/18-19/92 1 EMP	241.89

5-21-92

RIVERSIDE REGIONAL EDUCATION DATA CENTER

REPORT: APS/APS550/01
 RUN DATE: 05/21/92
 PAGE: 4

COUNTY: 33 RIVERSIDE
 DISTRICT: 46 JURUPA UNIFIED

REPORT OF PURCHASES

05/04/92 - 05/17/92
 PURCHASES OVER \$1

DISBURSEMENT ORDERS

REF	FUND	LOC/SITE	PROGRAM	VENDOR	DESCRIPTION	AMOUNT
D13390	101	197	00	SB1274 RESTRUCTURING/PLANNING CUE, INC	D13049 CONF 5/8-9/92 2 EMP	173.00
D13395	101	182	00	S.I.P. (SCHOOL IMPROVEMENT PR BLAKLEY, KATHLEEN	D13055 REIMB CONF 4/27/92 1 EMP	8.08
D13464	101	197	00	SB1274 RESTRUCTURING/PLANNING DODD, KELLY	D13039 REIMB INSTRUCTIONAL MATERIALS	133.68
D13465	101	188	00	S.I.P. (SCHOOL IMPROVEMENT PR DOTY, KRISTY	D13071 REIMB INSTRUCTIONAL MATERIALS	6.34
D13467	101	197	00	SB1274 RESTRUCTURING/PLANNING HOLT, NANCY	D13036 REIMB SUPPLIES	80.62
D13469	101	175	00	S.I.P. (SCHOOL IMPROVEMENT PR JAHN, SUSAN	D13065 MILEAGE	18.76
D13470	101	190	00	NON-AGENCY ACTIVITIES - EDUCA LAWRENCE, FRED	D13030 REIMB INSTRUCTIONAL MATERIALS	98.56
D13476	101	180	00	S.I.P. (SCHOOL IMPROVEMENT PR VALLE, ANN	D13069 MILEAGE	69.85
D13505	101	182	00	S.I.P. (SCHOOL IMPROVEMENT PR SHIVELY, ANITA	D13083 REIMB CONF 4/27/92 1 EMP	7.00
D13506	101	178	00	PL94-142 EDUC FOR ALL HANDICA BALT, SUSAN	D13084 REIMB CONF 4/30-5/1/92 1 EMP	78.54
D13507	101	178	00	PL94-142 EDUC FOR ALL HANDICA JENSEN, KATHI	D13085 REIMB CONF 4/30-5/1/92 1 EMP	24.13
D13508	101	191	00	NON-AGENCY CADPE NEWELL, LYNN	D13086 REIMB CONF 3/22-24/92 1 EMP	88.00
D13509	101	191	00	NON-AGENCY CADPE MILLER, PATTY	D13087 REIMB CONF 3/22-24/92 1 EMP	86.90
D13561	101	196	00	VOCATIONAL AGRICULTURE INCENT FULLER, RHONDA	D13094 REIMB CONF 2/18-23/92 1 EMP	330.08
D13566	101	178	00	DRUG ABUSE EDUCATION & PREVEN RIVERSIDE CO. OFFICE OF EDU	D13097 CONF 3/30-31/92 1 EMP	35.00
D13567	101	187	00	S.I.P. (SCHOOL IMPROVEMENT PR RIVERSIDE CO. OFFICE OF EDU	D13095 CONF 5/22/92 1 EMP	5.00
D13568	101	196	00	SB 1882-CA PROFESSIONAL DEVEL HIGHLAND SPRINGS RESORT &	D13098 CONF LODGING 5/3-4/92 1 EMP	127.00
D13639	101	178	00	OTHER STATE SPECIAL PROJECTS BRENNAN, KATHLEEN	D13120 STUDENT TEACHER STIPEND	225.00
D13640	101	178	00	OTHER STATE SPECIAL PROJECTS CALVERT, GERALD	D13121 STUDENT TEACHER STIPEND	225.00
D13641	101	178	00	OTHER STATE SPECIAL PROJECTS CAPORUSCIO, CAROL A	D13122 STUDENT TEACHER STIPEND	225.00
D13642	101	186	00	DRUG ABUSE EDUCATION & PREVEN CREATIVE EDUCATIONAL SYSTEM	D13112 PROF SERVICES APR 92 VB	2,100.00
D13643	101	178	00	OTHER STATE SPECIAL PROJECTS GRUNDEN, WALEED	D13123 STUDENT TEACHER STIPEND	225.00
D13644	101	178	00	OTHER STATE SPECIAL PROJECTS HULL, KENNETH	D13124 STUDENT TEACHER STIPEND	225.00
D13645	101	178	00	OTHER STATE SPECIAL PROJECTS LOCKLEAR, MICHAEL N	D13125 STUDENT TEACHER STIPEND	225.00

I-2
B4

RIVERSIDE REGIONAL EDUCATION DATA CENTER

REPORT: APS/AR5550/01
 RUN DATE: 05/21/92
 PAGE: 5

COUNTY: 33 RIVERSIDE
 DISTRICT: 46 JURUPA UNIFIED

REPORT OF PURCHASES
 05/04/92 - 05/17/92
 PURCHASES OVER \$1

DISBURSEMENT ORDERS

REF	FUND	LOC/SITE	PROGRAM	VENDOR	DESCRIPTION	AMOUNT
D13646	101	178	00	OTHER STATE SPECIAL PROJECTS	MARTIN, MONTY	225.00
D13647	101	186	00	DRUG ABUSE EDUCATION & PREVEN	MENDIOLA, MARIA	300.00
D13648	101	178	00	OTHER STATE SPECIAL PROJECTS	PATTEN, MELISSA	225.00
D13649	101	178	00	OTHER STATE SPECIAL PROJECTS	STUTER, KRISTINE	225.00
D13650	101	178	00	E.C.I.A. CHAPTER 1	BILLIE JEAN TELLES	500.00
D13720	101	178	00	DRUG ABUSE EDUCATION & PREVEN	SAN BERNARDINO COUNTY SCHOO	20.00
D13725	101	180	00	S.I.P. (SCHOOL IMPROVEMENT PR	SAN BERNARDINO COUNTY SCHOO	12.00
D13739	101	184	00	S.I.P. (SCHOOL IMPROVEMENT PR	LANCASTER, WALTER	265.28
D13764	101	191	00	DEMONSTRATION PROGRAMS IN REA	GILL, TONI	112.98
D13765	101	184	00	S.I.P. (SCHOOL IMPROVEMENT PR	LANCASTER, WALTER	55.72
D13817	101	188	00	S.I.P. (SCHOOL IMPROVEMENT PR	CENTER SUMMER WORKSHOPS	227.00
D13818	101	196	00	SB 1882-CA PROFESSIONAL DEVEL	TROSPER, JILL	33.00
					FUND TOTAL	7,263.41
					TOTAL NUMBER OF DISBURSEMENTS	37
D13480	102	186	00	RESOURCE SPECIALIST PROGRAM	KNOX, PAULINE	87.28
					FUND TOTAL	87.28
					TOTAL NUMBER OF DISBURSEMENTS	1
D13559	103	178	00	GIFTED AND TALENTED EDUCATION	CSLA	75.00
D13800	103	178	00	PUPIL TRANSPORTATION	SARTOR, HENRY	5.39
					FUND TOTAL	80.39
					TOTAL NUMBER OF DISBURSEMENTS	2
D13805	119	178	00	PLANT MAINTENANCE	ELZIG, BILL	175.84

J-2
 35

RIVERSIDE REGIONAL EDUCATION DATA CENTER

REPORT: AFS/APS550/01
 RUN DATE: 05/21/92
 PAGE: 6

COUNTY: 33 RIVERSIDE
 DISTRICT: 46 JURUPA UNIFIED

REPORT OF PURCHASES
 05/04/92 - 05/17/92
 PURCHASES OVER \$1
 DISBURSEMENT ORDERS

REF	FUND LOC/SITE	PROGRAM	VENDOR	DESCRIPTION	FUND TOTAL	TOTAL NUMBER OF DISBURSEMENTS
D13651	370 192 11	FACILITIES	JURUPA COMMUNITY SERVICES	D13107 PLAN CHECKING CHARGES HLMS	175.84	1
				FUND TOTAL	1,835.34	1
D13487	380 172 11	FACILITIES	SOUTHERN CALIFORNIA EDISON	D13057 PROF SERVICES SA	580.00	1
				FUND TOTAL	580.00	1
D13810	700 178 00	STATE PRESCHOOL AB-451	VIRGINIA SCHANZ	D13148 REIMB CONF 5 EMP 4/22/92	25.00	1
				FUND TOTAL	25.00	1
D13652	900 178 00	DISTRICT ADMINISTRATION	STEINBRINCK, MARJORIE	D13106 REIMB PERSONAL LOSS	100.00	1
				FUND TOTAL	100.00	1

113 DISBURSEMENT ORDERS FOR A GRAND TOTAL OF 151,403.37

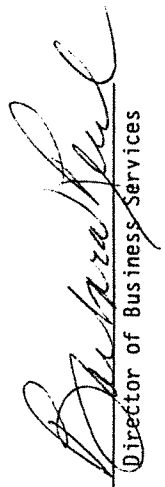
RECOMMEND APPROVAL: *[Signature]*
 Director of Business Services

APPROPRIATION TRANSFERS

GENERAL FUND

Object	Description	Current Budget	Increase	Decrease	Revised Budget	Comments
0971	Appropriation for Contingencies	\$2,479,738		\$1,769	\$2,477,969 (2)	
1000	Certificated Salaries	\$28,322,523		\$6,550	\$28,315,973 (2)	
2000	Classified Salaries	\$5,418,030		\$4,782	\$5,413,248 (1)	
3000	Employee Benefits	\$7,205,901	\$1,684		\$7,207,585 (1)	
4300	Instructional Supplies	\$404,871	\$2,676		\$407,547 (2)	
4500	Other Supplies	\$397,237	\$2,854		\$400,091 (2)	
5100	Personal Services/Consultants	\$33,210		\$150	\$33,060	
5200	Travel and Conferences	\$53,003	\$430		\$53,433	
5400	Insurance	\$446,846	\$2,007		\$448,853 (2)	
5700	Direct Costs for Interprogram and Interfund Services	\$114,828	\$800		\$115,628	
5800	Other Services	\$716,963	\$2,000		\$718,963 (2)	
6400	Equipment	\$64,498	\$1,100		\$65,598 (3)	
8900	District Contribution to Restricted Funds	(\$2,002,982)	\$300		(\$2,002,682)	
Total Fund 100		\$43,654,666			\$43,655,266	
OTHER RESTRICTED FUNDS - FUND 103						
5700	Direct Costs for Interprogram and Interfund Services	(\$115,404)	(\$300)		(\$115,704)	
8900	District Contribution to Restricted Funds	\$125,488		\$300	\$125,188	
Total Fund 103		\$10,084			\$9,484	

- (1) Salary adjustments
- (2) Includes small dollar amounts to match appropriation with program needs
- (3) District area maps

Recommend Approval: 
 Director of Business Services

I-3

Jurupa Unified School District
1991/92 AGREEMENTS

Agreement Number	Contractor	Amount	Fund/Program To Be Charged	Purpose
<u>92-1</u>	<u>Consultant or Personal Service Agreements</u>			
92-1-BBBBBB- M1	Foley's Computing	\$ 1,670.00	Business Services	Revise payment from \$1,570 to 1,670 for computer technical services to adjust and add new changes to the district fringe benefit software program
92-1-HHHHH	Helen I. Crossley	\$ 750.00	SIP	Inservice on "Integrating Math and Science Into The Curriculum Using Project AIMS" to staff of Ina Arbuckle Elementary
92-1-IIIII	Larry Glass	\$ 135.00	PTA	Provide music for end of the year sixth grade social
92-1-JJJJJ	Daniel Porcu	\$ 140.00	PTA	Performance for Young Authors' Day at Indian Hills Elementary

The Assistant Superintendent Business Services will have copies of agreements available for review by the Board.

Rollin Edmunds
 Assistant Superintendent
 Business Services

RE/dc
 6/1/92

I-4

JURUPA UNIFIED SCHOOL DISTRICT
Instructional Services

DISTRICT ADVISORY COUNCIL FOR THE CONSOLIDATED APPLICATION

UNADOPTED MINUTES OF MEETING #4

May 13, 1992 - 9:00 a.m.
Professional Development Center

CALL TO ORDER The fourth meeting of the District Advisory Council for the Consolidated Application was called to order by Ms. Benita Roberts, Assistant Superintendent, at 9:00 a.m. at the Professional Development Center, 5769 42nd Street, Riverside.

ROLL CALL Elected District Advisory Council members present were:

Mr. Jose Arroyo, Parent, Ina Arbuckle Elementary
Ms. Karen Bronham, Parent, Rustic Lane Elementary
Ms. Linda Guillen, Parent, Sky Country Elementary
Ms. Sue Ann Gutierrez, Parent, Glen Avon Elementary
Ms. JoAnn Papavero, Staff, Mission Middle School
Ms. Kathy Sage, Parent, Mission Bell Elementary
Ms. Teresa Schopp, Parent, Troth Street Elementary
Ms. Judy Wigg, Parent, Pacific Avenue Elementary
Ms. Kenya Zundel, Staff, Jurupa Valley High School

Staff members present:

Ms. Anita Avellino, Resource Teacher, Troth Street Elementary
Mrs. Tina Brennan, Curriculum Coordinator
Mr. Bill Gagner, Resource Teacher, Mission Bell Elementary
Ms. Louise Gillette, Resource Teacher, Sunnyslope Elementary
Ms. Jacki Johnson, Resource Teacher, Glen Avon Elementary
Ms. Janaye Jones, Coordinator, Instructional Media Center
Ms. Arlene Leedy, Resource Teacher, Glen Avon Elementary
Ms. Lupe Lopez, Coordinator, Bilingual Education
Mr. Don Manzo, Principal, Mission Middle School
Ms. Teresa Moreno, Administrative Secretary
Ms. Gracene Moss, Resource Teacher, Ina Arbuckle Elementary
Mr. Gregg Nelsen, Resource Teacher, Sunnyslope Elementary
Ms. Ellen Rahe, Principal, Camino Real Elementary
Mr. Jim Owen, Staff, Pedley Elementary
Ms. Benita Roberts, Assistant Superintendent
Mr. David Siegrist, Resource Teacher, Rustic Lane Elementary
Ms. Patty Stark, Resource Teacher, West Riverside Elementary
Ms. Marsha Willis, Program Assistant, Head Start/Preschool

INFORMATION SESSION

FLAG SALUTE The committee members and staff attending participated in the flag salute to the United States of America.

BRUNCH In recognition of our District Advisory Committee members who have provided service to our district, brunch was served before the business portion of the meeting.

ACTION SESSION

APPROVAL OF MINUTES FOR MEETING #3

Ms. Linda Guillen moved for approval of the minutes for Meeting #3 on March 25, 1992.

Ms. Janaye Jones seconded the motion which carried unanimously.

REVIEW PART I OF THE CONSOLIDATED APPLICATION

The Consolidated Application is the district's application for State and Federal supplemental grants. Jurupa Unified School District's programs in this application include School Improvement, Economic Impact Aid, Chapter 1, Chapter 2, Tenth Grade Counseling. The estimated entitlement for the 1992-93 school year, based on the 1991-92 entitlement, is \$2,542,718. The Professional Development funding is not an entitlement this year. It will be a competitive grant and both high schools will have an opportunity to apply for these funds in the fall. Although most grants are entitlements rather than competitive grants, the Board of Education must make application in order for these funds to be received by the district. The 1992-93 Consolidated Application will be submitted in two parts because of the uncertainty of funding for the project grants: Part 1 is due June 1, 1992.

Ms. Patty Stark motioned for submittal of Part I of the Consolidated Application. Mr. Bill Gagner seconded the motion which carried unanimously.

REVIEW SCHOOL LEVEL PLANS

All schools revised last year's plans for the 1992-93 school year. Parents and staff worked together to revise the school plans based on students' needs. The following representatives presented an overview of their school plan to the council: Patty Stark, Resource Teacher, West Riverside; Teresa Schopp, Parent, Troth Street; Gregg Nelsen and Louise Gillette, Resource Teachers, Sunnyslope; Walt Lancaster, Principal, Rustic Lane; Jim Owen, Teacher, Pedley; Judy Wigg, Parent, Pacific Avenue; Bill Gagner, Resource Teacher, Mission Bell; Gracene Moss, Resource Teacher, Ina Arbuckle; Arlene Leedy, Resource Teacher, Glen Avon; Don Manzo, Principal, Mission Middle; Linda Guillen, Parent, Sky Country; and Ellen Raher, Principal, Camino Real.

Plans will be submitted to the Board of Education for their approval on June 22, 1992.

RECOGNITION OF DISTRICT ADVISORY COUNCIL MEMBERS

Ms. Roberts presented certificates of award to District Advisory Council members for their volunteer service. She indicated that the Board of Education and District Administration are grateful to council members for the hours spent attending meetings, reviewing materials, offering valuable suggestions, reviewing school programs, and providing information to other parents and community members.

ADJOURNMENT

The meeting was adjourned at 10:25 a.m. and the District Bilingual Education Committee meeting followed.

BR:tm
5.27.92

J-2
PS 2

Jurupa Unified School District

CAFETERIA FUND

Revenue and Expense Report
Month Ending and Year to Date
March 31, 1992

<u>Revenue:</u>	<u>1991</u>	<u>1992</u>	<u>Year to Date</u> <u>1990/91</u>	<u>Year to Date</u> <u>1991/92</u>
Daily Sales	\$149,582	\$145,491	\$924,631	\$898,899
Federal Reimbursement	116,154	154,357	671,209	842,127
State Reimbursement	9,447	12,926	54,228	68,886
Other Income	427	237	24,090	17,433
Total Sales	<u>\$275,610</u>	<u>\$313,011</u>	<u>\$1,674,158</u>	<u>\$1,827,345</u>
 <u>Cost of Food Sales:</u>				
Food Available for Sale	\$133,446	\$160,996	\$648,004	\$673,962
Less Ending Inventory	<u>54,024</u>	<u>60,496</u>	<u>54,024</u>	<u>60,496</u>
Cost of Sales	<u>79,422</u>	<u>100,500</u>	<u>593,980</u>	<u>613,466</u>
Gross Profit on Sales	<u>\$196,188</u>	<u>\$212,511</u>	<u>\$1,080,178</u>	<u>\$1,213,879</u>
 <u>Expenses:</u>				
Labor	\$142,373	\$147,574	\$866,762	\$901,786
Supplies	13,875	9,030	70,988	67,325
Purchased Services	2,978	1,371	11,632	7,686
Vehicle Repairs & Fuel	382	700	4,032	5,751
Maintenance Repairs	-0-	-0-	1,223	7,846
New Equipment	5,325	1,569	15,390	9,026
Replacement Equipment	209	-0-	1,855	-0-
General Fund Expense	<u>18,564</u>	<u>29,656</u>	<u>114,036</u>	<u>176,588</u>
Total Expenses	<u>\$183,706</u>	<u>\$189,900</u>	<u>\$1,085,918</u>	<u>\$1,176,008</u>
 Net Profit or (Loss)	 \$12,482	 \$22,611	 (\$5,740)	 \$37,871
Number of Serving Days	21	22	127	129
Number of Breakfasts Served	-0-	11,718	-0-	41,859
Number of Lunches Served	115,233	126,346	689,823	738,015
Average Breakfast/Day	-0-	532	-0-	370
Average Lunches/Day	5,487	5,743	5,432	5,721
Average Cost/Breakfast & Lunch	\$1.40	\$1.43	\$1.54	\$1.54

AH:cc