

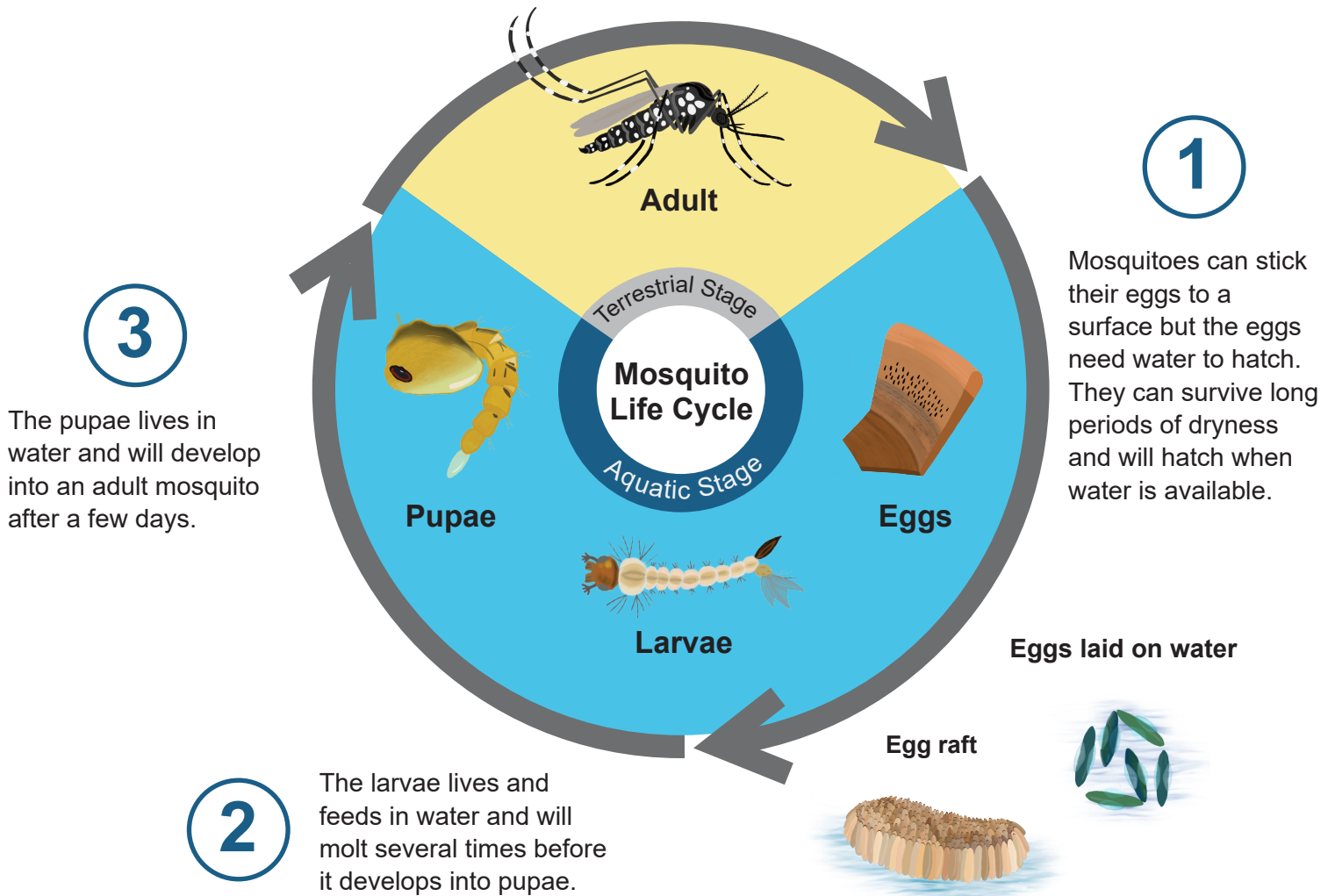
Mosquito IPM at Schools



Integrated Pest Management (IPM) is any approach that uses the least toxic, effective method to solve pest problems. Managing mosquitoes at schools is important because they can transmit diseases like West Nile Virus, and their bites lead to irritation, annoyance, and allergic reactions. By using IPM practices, it's possible to effectively, safely, and more sustainably manage mosquitoes while protecting people and the environment.

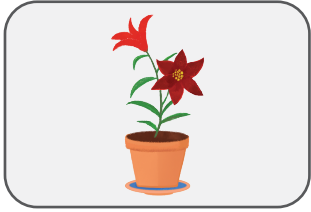
Mosquito Biology

The life cycle of a mosquito has four stages: egg, larvae, pupae, and adult. Mosquitoes can lay eggs individually or in a group called a raft. The eggs can be laid directly on water, soil, or on a surface that may later fill with water like a potted plant saucer. Typically the life cycle, from egg to adult, can take up to 14 days to complete, but in high temperatures it can be completed in as little as 4 days.

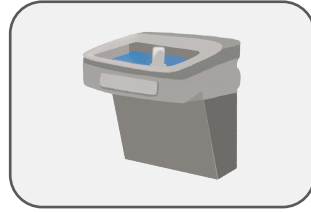


Mosquito Prevention through Water Management

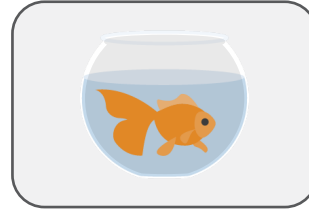
Mosquitoes depend on standing water to complete their life cycle. Below are examples of where standing water is commonly found at school sites. Focus on these and other potential breeding sites to break the mosquito life cycle while also conserving water use.



Empty water that fills in potted plant saucers.



Make sure all drains are in repair and water is not pooling.



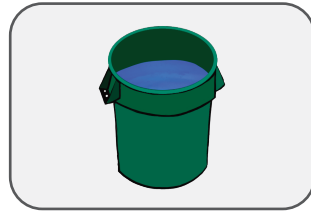
Clean classroom pet water bowls and fish bowls regularly.



Check that water is not pooling on playground equipment or toys.



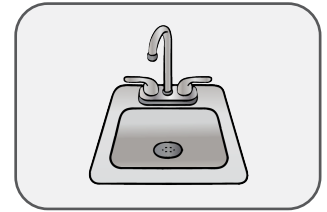
Avoid placing plants rooted in water or flower vases containing water in classrooms.



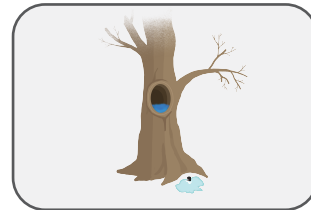
Prevent trash cans from filling with water. Consider drilling drainage holes, if necessary.



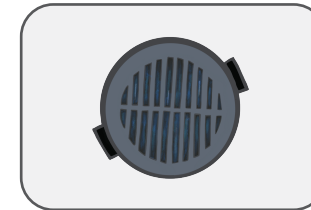
Pickup and dispose of trash and clutter. Mosquitoes can breed in a cap full of water.



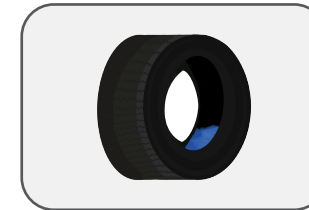
Make sure that classroom sinks drain completely and no standing water is left behind.



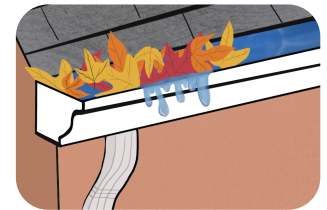
Fill tree holes if they hold water. Fix irrigation leaks.



Clean yard drains and make sure they are in proper working order. Place window screens on drains, if needed.



Recycle all old tires.



Clean gutters regularly and ensure that they are functioning.



For more information on how to manage mosquitoes at your school, visit your local vector control district's website and contact them for assistance.

